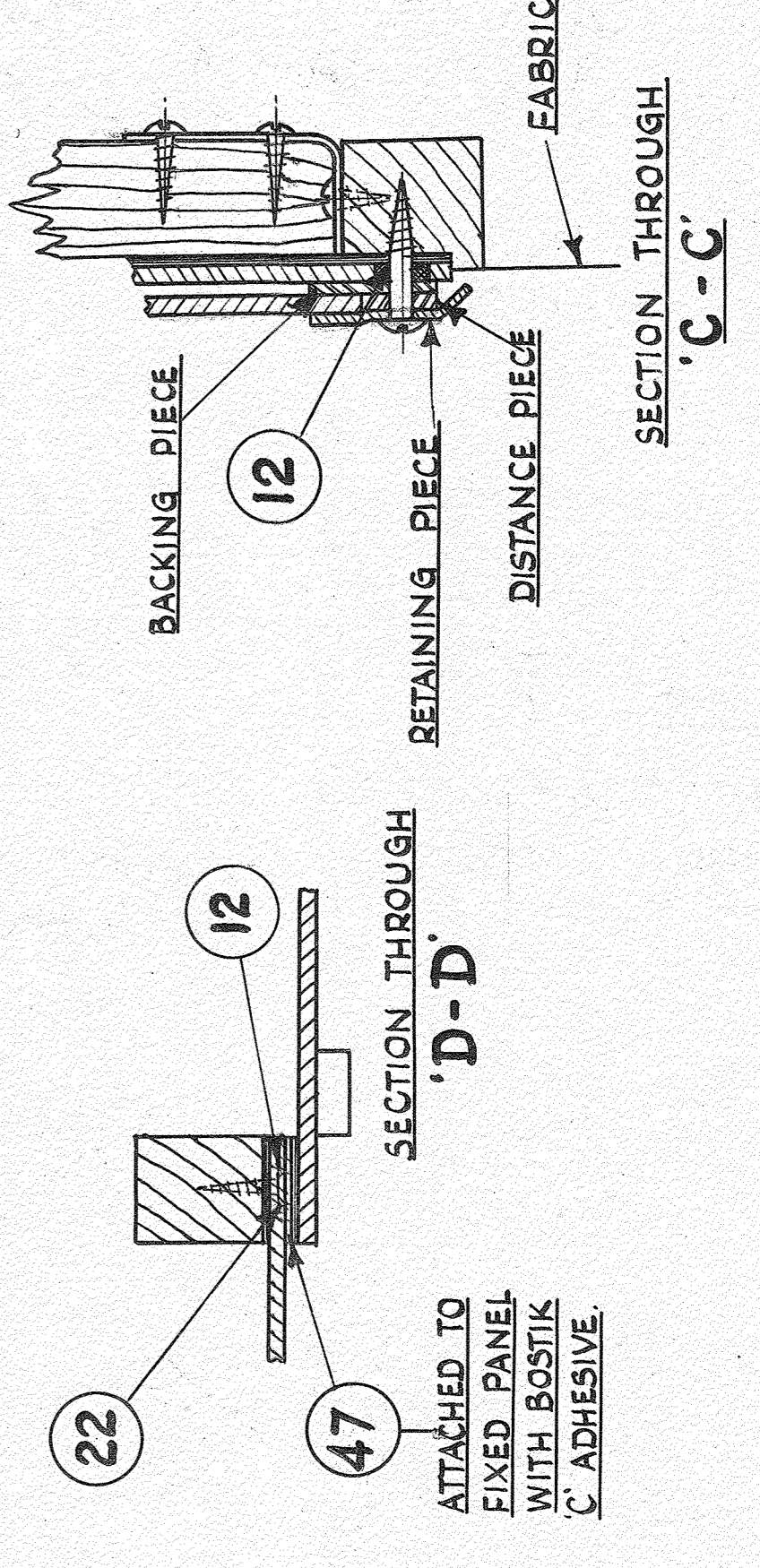
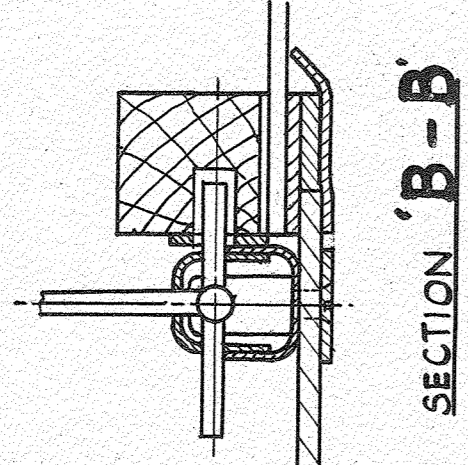
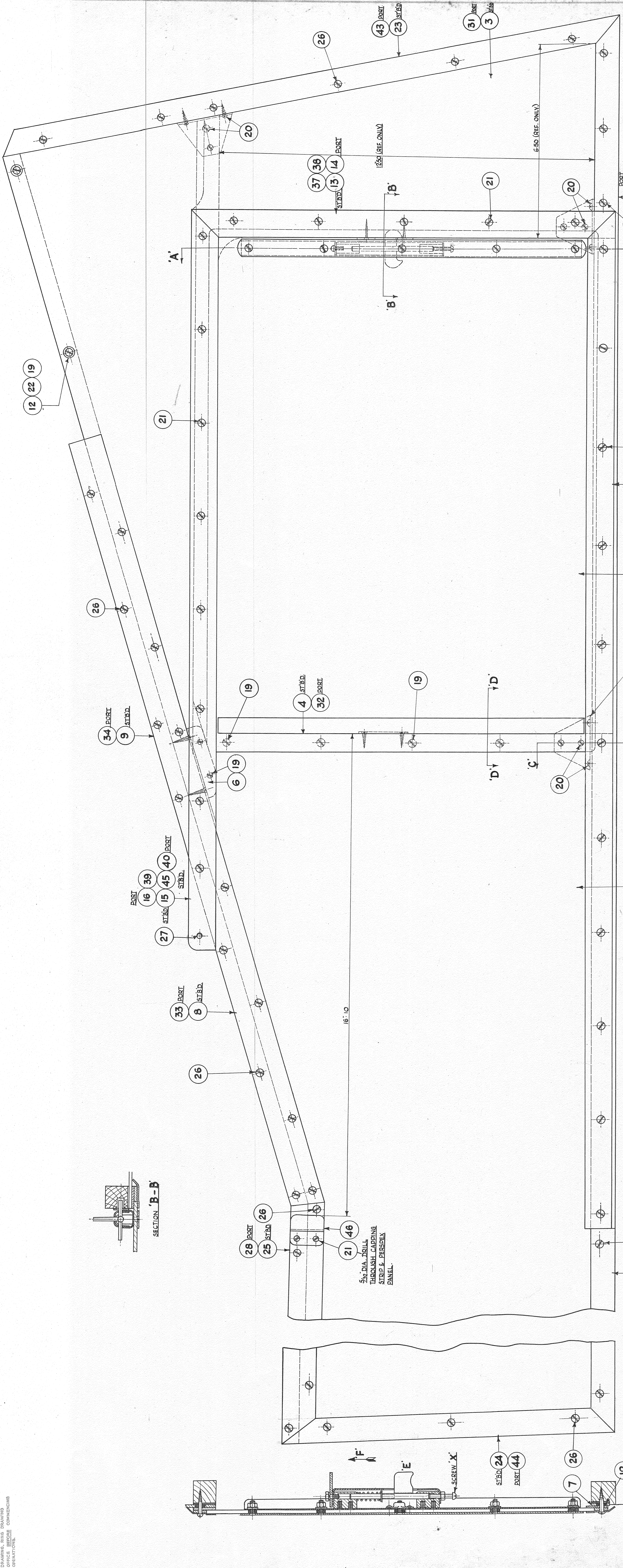


1. DO NOT SCALE DRAWING
 2. ENGLISH PROJECTION IS UNLESS OTHERWISE STATED
 3. TOLERANCES ON DIMENSIONS ARE AS SHOWN
 4. IF IN DOUBT ABOUT THIS DRAWING, RING DRAWING OFFICE BEFORE COMMENCING OPERATIONS.



AN ADJUSTMENT SCREW (SCREW 'X' IN SECTION 'A-A') HAS BEEN PROVIDED SO THAT AFTER ASSEMBLY THE WINDOW CATCH CAN BE RAISED OR LOWERED TO SUIT THE CATCH PLATE ON THE WINDOW FRAME.

THE WINDOW IS OPENED BY LIFTING CATCH 'E' IN DIRECTION OF ARROW 'F' AND THEN SLIDING OPEN THE LOCK ON THE FRONT EDGE OF THE SLIDING PANEL ENDS A STRIKING PLATE ON THE WINDOW FRAME REAR MEMBER AND LOCKS THE PANEL IN THE OPEN POSITION TO CLOSE THE WINDOW. LIFT CATCH AS FOR OPENING AND SLIDE SHUT.

SEAL PERSEPEX PANELS TO A/C WITH BOSTIK TAPE AND NOBELS PLASTIC COMPOUND No. 153 1522.

NOTE 1 - WHEN THIS INSTALLATION IS FITTED TO A/C ITEMS SHOWN ON THIS DRG. COMPLETELY REPLACE SIDE WINDOW AND FIXINGS CALLED FOR ON EKA 117.

NO.	QTY	DESCRIPTION	UNIT	REF. DIM.	APPROX.	SCALE	DATE	BY	CHKD.	APPR.
16	1	RETAINING STRIP	AKA 346/L	1						
15	1	RETAINING STRIP	AKA 346/R	1						
14	1	RETAINING STRIP	AKA 367/L	1						
13	1	RETAINING STRIP	AKA 367/R	1						
12	1	RUBBER GROMMET	AGA 304	1						
11	1	CAPPING STRIP	AKA 373/R	1						
10	1	CAPPING STRIP	AKA 370/R	1						
9	1	CAPPING STRIP	AKA 372/R	1						
8	1	CAPPING STRIP	AKA 371/R	1						
7	1	PACKING STRIP	AKA 368	1						
6	1	BRACKET	AKA 360	1						
5	1	SLIDING WINDOW FRAME ASSY	AKA 376/R	1						
4	1	FRONT PANEL	AKA 374/R	1						
3	1	SLIDING WINDOW & VENTILATOR ASSY	AKA 370/R	1						
2	1	PANEL ASSY	DIA 358/R	1						
1	1	SLIDING WINDOW	DIA 358/R	1						

NO.	QTY	DESCRIPTION	UNIT	REF. DIM.	APPROX.	SCALE	DATE	BY	CHKD.	APPR.
44	1	CAPPING STRIP	AKA 168/L	1						
43	1	CAPPING STRIP	AKA 168/R	1						
42	1	BACKING STRIP	AKA 366	1						
41	1	BACKING STRIP	AKA 447	1						
40	1	BACKING STRIP	AKA 447/L	1						
39	1	DISTANCE PIECE	AKA 446	1						
38	1	DISTANCE PIECE	AKA 445	1						
37	1	DISTANCE PIECE	AKA 445	1						
36	1	CAPPING STRIP	AKA 376/L	1						
35	1	CAPPING STRIP	AKA 372/L	1						
34	1	CAPPING STRIP	AKA 374/L	1						
33	1	CAPPING STRIP	AKA 371/L	1						
32	1	SLIDING WINDOW FRAME ASSY	AKA 376/L	1						
31	1	FRONT PANEL	AKA 374/L	1						
30	1	SLIDING WINDOW & VENTILATOR ASSY	AKA 370/L	1						
29	1	SLIDING WINDOW	DIA 358/L	1						

NO.	QTY	DESCRIPTION	UNIT	REF. DIM.	APPROX.	SCALE	DATE	BY	CHKD.	APPR.
47	1	CLIP	AKA 444	1						
46	1	BACKING STRIP	AKA 374/L	1						
45	1	SLIDING WINDOW	DIA 358/L	1						

NO.	QTY	DESCRIPTION	UNIT	REF. DIM.	APPROX.	SCALE	DATE	BY	CHKD.	APPR.
1	240	493	AHT							
2	1	1	AHT							
3	1	1	AHT							
4	1	1	AHT							

TYPE : AUSTER

KA 344 1/2

INSTALLATION OF SLIDING WINDOW

AUSTER AIRCRAFT LTD.