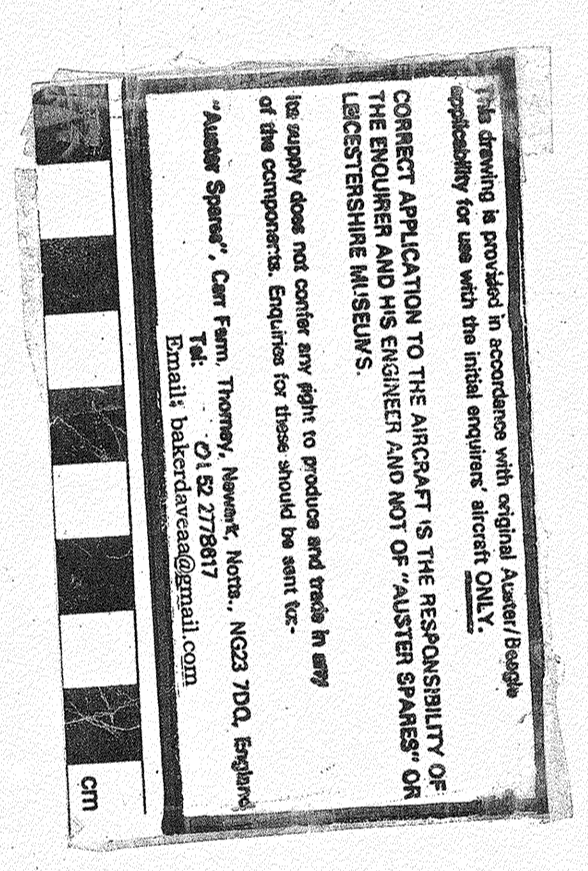


1. DO NOT SCALE DRAWING
2. DIMENSIONS ARE IN INCHES
3. DIMENSIONS IN PARENTHESES ARE IN MILLIMETERS
4. DIMENSIONS ON THIS DRAWING ARE TO CENTER UNLESS OTHERWISE SPECIFIED
5. DIMENSIONS ON THIS DRAWING ARE TO CENTER UNLESS OTHERWISE SPECIFIED
6. DIMENSIONS ON THIS DRAWING ARE TO CENTER UNLESS OTHERWISE SPECIFIED
7. DIMENSIONS ON THIS DRAWING ARE TO CENTER UNLESS OTHERWISE SPECIFIED
8. DIMENSIONS ON THIS DRAWING ARE TO CENTER UNLESS OTHERWISE SPECIFIED
9. DIMENSIONS ON THIS DRAWING ARE TO CENTER UNLESS OTHERWISE SPECIFIED
10. DIMENSIONS ON THIS DRAWING ARE TO CENTER UNLESS OTHERWISE SPECIFIED
11. DIMENSIONS ON THIS DRAWING ARE TO CENTER UNLESS OTHERWISE SPECIFIED
12. DIMENSIONS ON THIS DRAWING ARE TO CENTER UNLESS OTHERWISE SPECIFIED
13. DIMENSIONS ON THIS DRAWING ARE TO CENTER UNLESS OTHERWISE SPECIFIED
14. DIMENSIONS ON THIS DRAWING ARE TO CENTER UNLESS OTHERWISE SPECIFIED
15. DIMENSIONS ON THIS DRAWING ARE TO CENTER UNLESS OTHERWISE SPECIFIED
16. DIMENSIONS ON THIS DRAWING ARE TO CENTER UNLESS OTHERWISE SPECIFIED
17. DIMENSIONS ON THIS DRAWING ARE TO CENTER UNLESS OTHERWISE SPECIFIED
18. DIMENSIONS ON THIS DRAWING ARE TO CENTER UNLESS OTHERWISE SPECIFIED
19. DIMENSIONS ON THIS DRAWING ARE TO CENTER UNLESS OTHERWISE SPECIFIED
20. DIMENSIONS ON THIS DRAWING ARE TO CENTER UNLESS OTHERWISE SPECIFIED
21. DIMENSIONS ON THIS DRAWING ARE TO CENTER UNLESS OTHERWISE SPECIFIED
22. DIMENSIONS ON THIS DRAWING ARE TO CENTER UNLESS OTHERWISE SPECIFIED
23. DIMENSIONS ON THIS DRAWING ARE TO CENTER UNLESS OTHERWISE SPECIFIED
24. DIMENSIONS ON THIS DRAWING ARE TO CENTER UNLESS OTHERWISE SPECIFIED
25. DIMENSIONS ON THIS DRAWING ARE TO CENTER UNLESS OTHERWISE SPECIFIED
26. DIMENSIONS ON THIS DRAWING ARE TO CENTER UNLESS OTHERWISE SPECIFIED
27. DIMENSIONS ON THIS DRAWING ARE TO CENTER UNLESS OTHERWISE SPECIFIED
28. DIMENSIONS ON THIS DRAWING ARE TO CENTER UNLESS OTHERWISE SPECIFIED
29. DIMENSIONS ON THIS DRAWING ARE TO CENTER UNLESS OTHERWISE SPECIFIED
30. DIMENSIONS ON THIS DRAWING ARE TO CENTER UNLESS OTHERWISE SPECIFIED
31. DIMENSIONS ON THIS DRAWING ARE TO CENTER UNLESS OTHERWISE SPECIFIED
32. DIMENSIONS ON THIS DRAWING ARE TO CENTER UNLESS OTHERWISE SPECIFIED
33. DIMENSIONS ON THIS DRAWING ARE TO CENTER UNLESS OTHERWISE SPECIFIED
34. DIMENSIONS ON THIS DRAWING ARE TO CENTER UNLESS OTHERWISE SPECIFIED
35. DIMENSIONS ON THIS DRAWING ARE TO CENTER UNLESS OTHERWISE SPECIFIED
36. DIMENSIONS ON THIS DRAWING ARE TO CENTER UNLESS OTHERWISE SPECIFIED
37. DIMENSIONS ON THIS DRAWING ARE TO CENTER UNLESS OTHERWISE SPECIFIED
38. DIMENSIONS ON THIS DRAWING ARE TO CENTER UNLESS OTHERWISE SPECIFIED
39. DIMENSIONS ON THIS DRAWING ARE TO CENTER UNLESS OTHERWISE SPECIFIED
40. DIMENSIONS ON THIS DRAWING ARE TO CENTER UNLESS OTHERWISE SPECIFIED
41. DIMENSIONS ON THIS DRAWING ARE TO CENTER UNLESS OTHERWISE SPECIFIED
42. DIMENSIONS ON THIS DRAWING ARE TO CENTER UNLESS OTHERWISE SPECIFIED
43. DIMENSIONS ON THIS DRAWING ARE TO CENTER UNLESS OTHERWISE SPECIFIED
44. DIMENSIONS ON THIS DRAWING ARE TO CENTER UNLESS OTHERWISE SPECIFIED
45. DIMENSIONS ON THIS DRAWING ARE TO CENTER UNLESS OTHERWISE SPECIFIED

MOUNTING TO BE ADAPTED TO CLEAR AIRCRAFT
 CABLE IF NECESSARY.
 SECTION J-J SHOWING PART
 OF E.T.2.

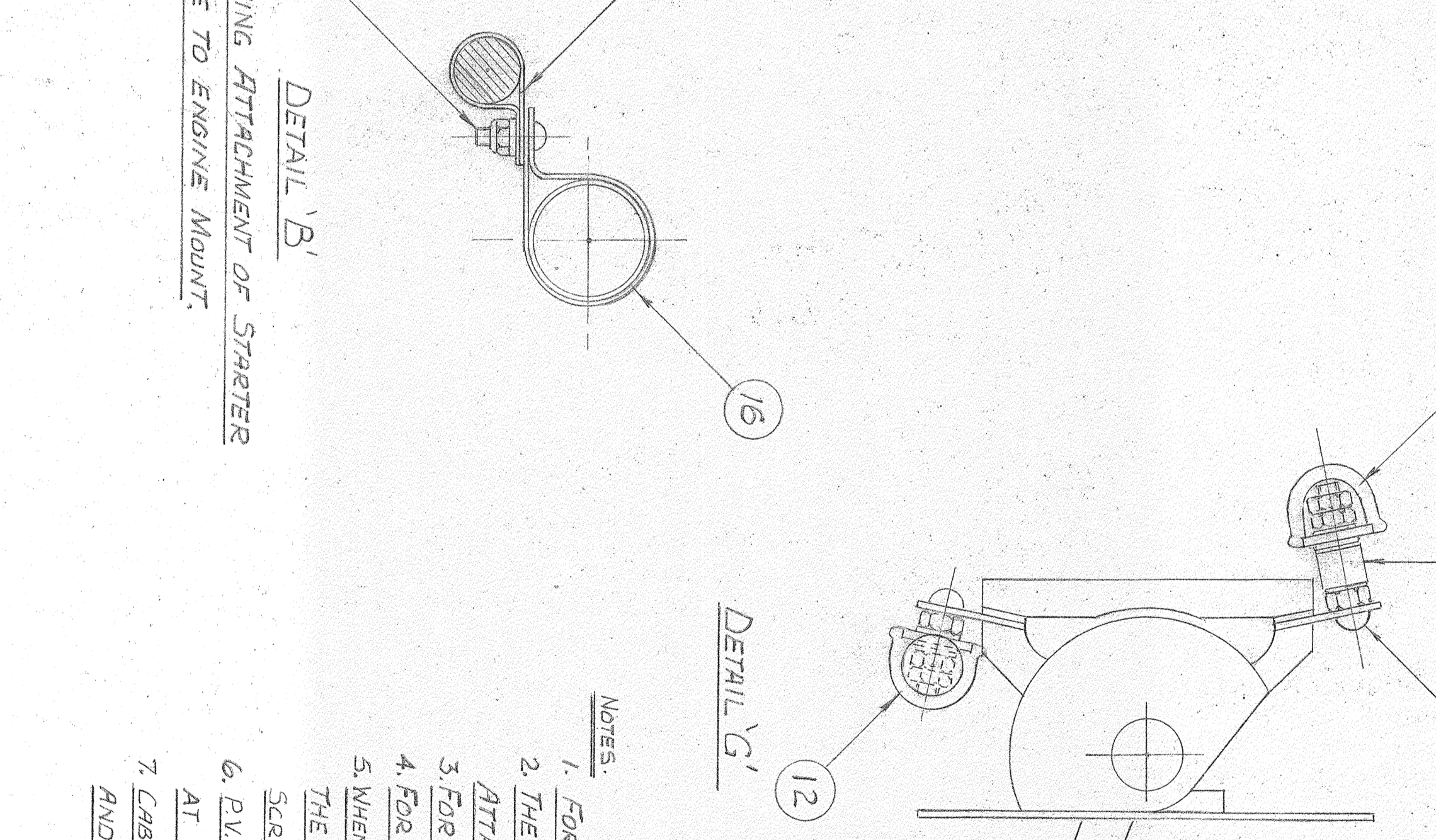
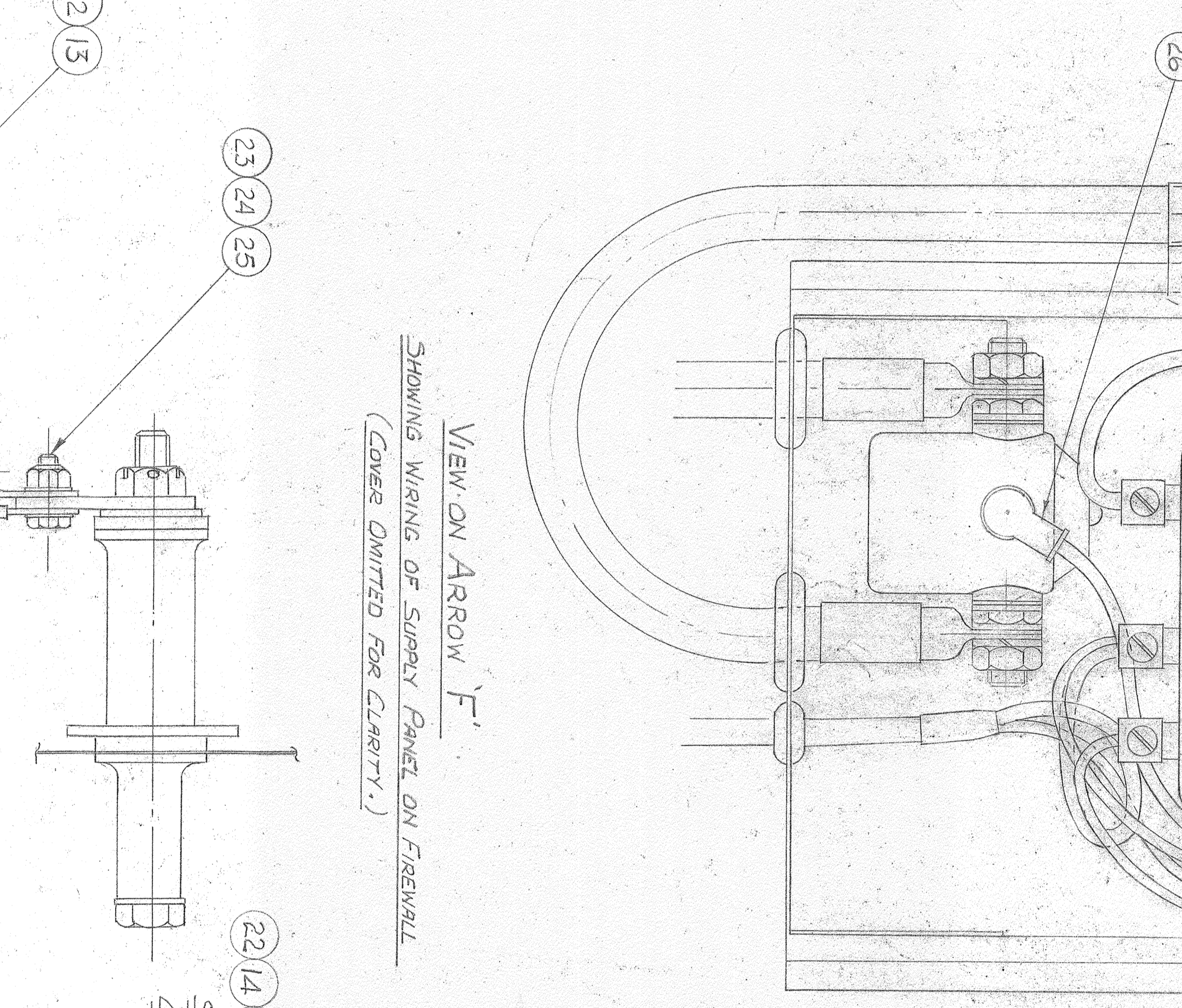
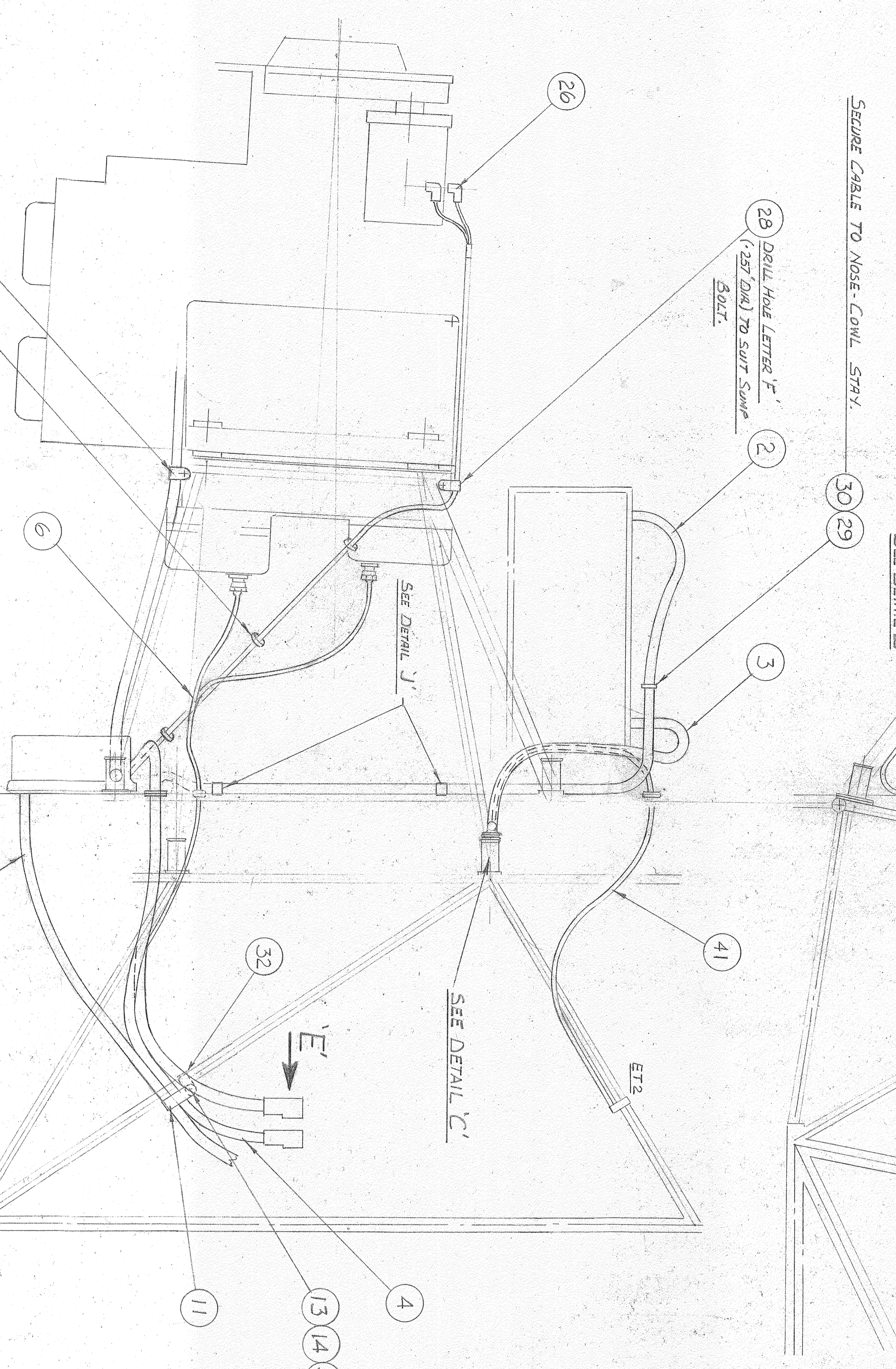
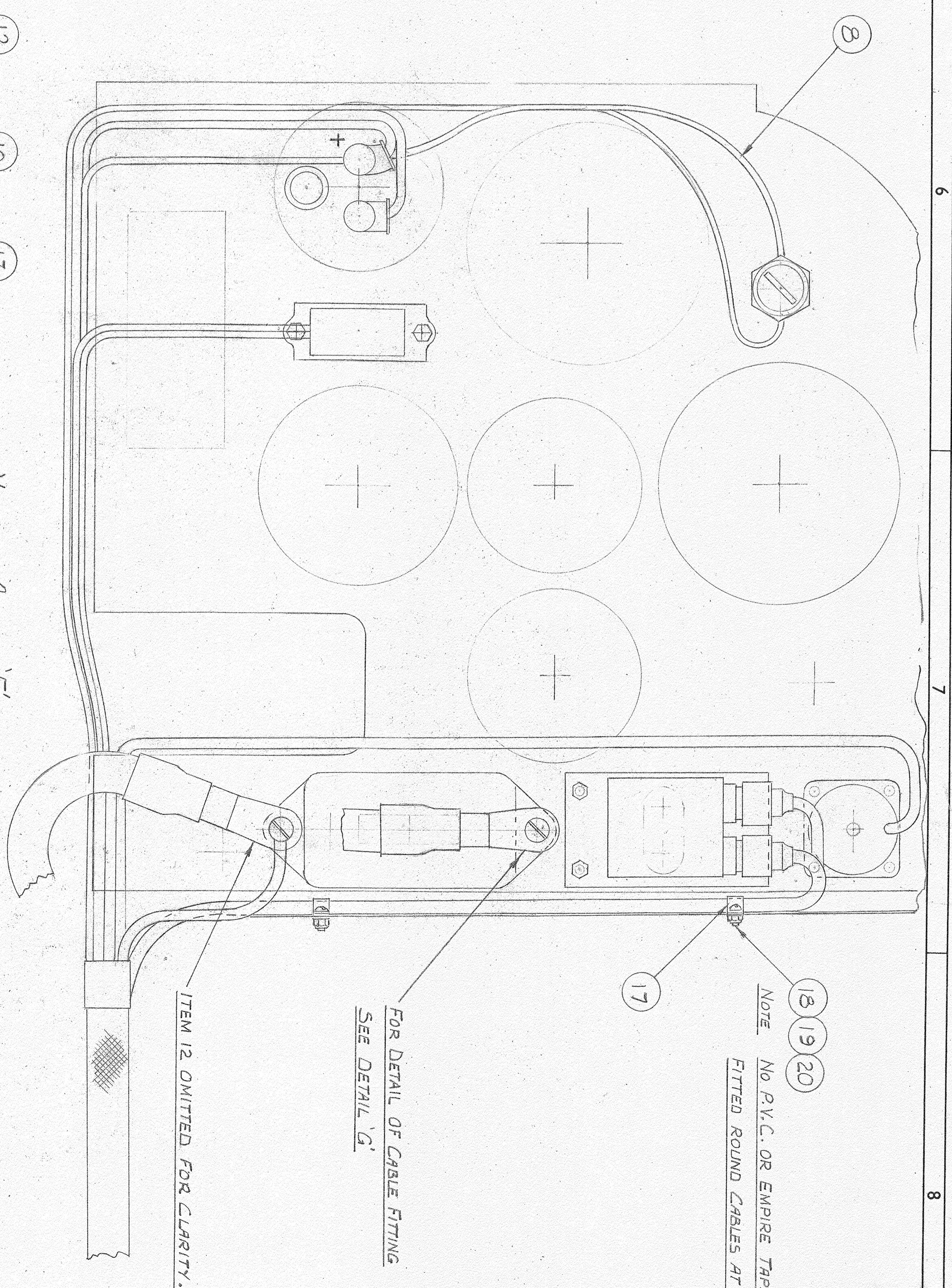
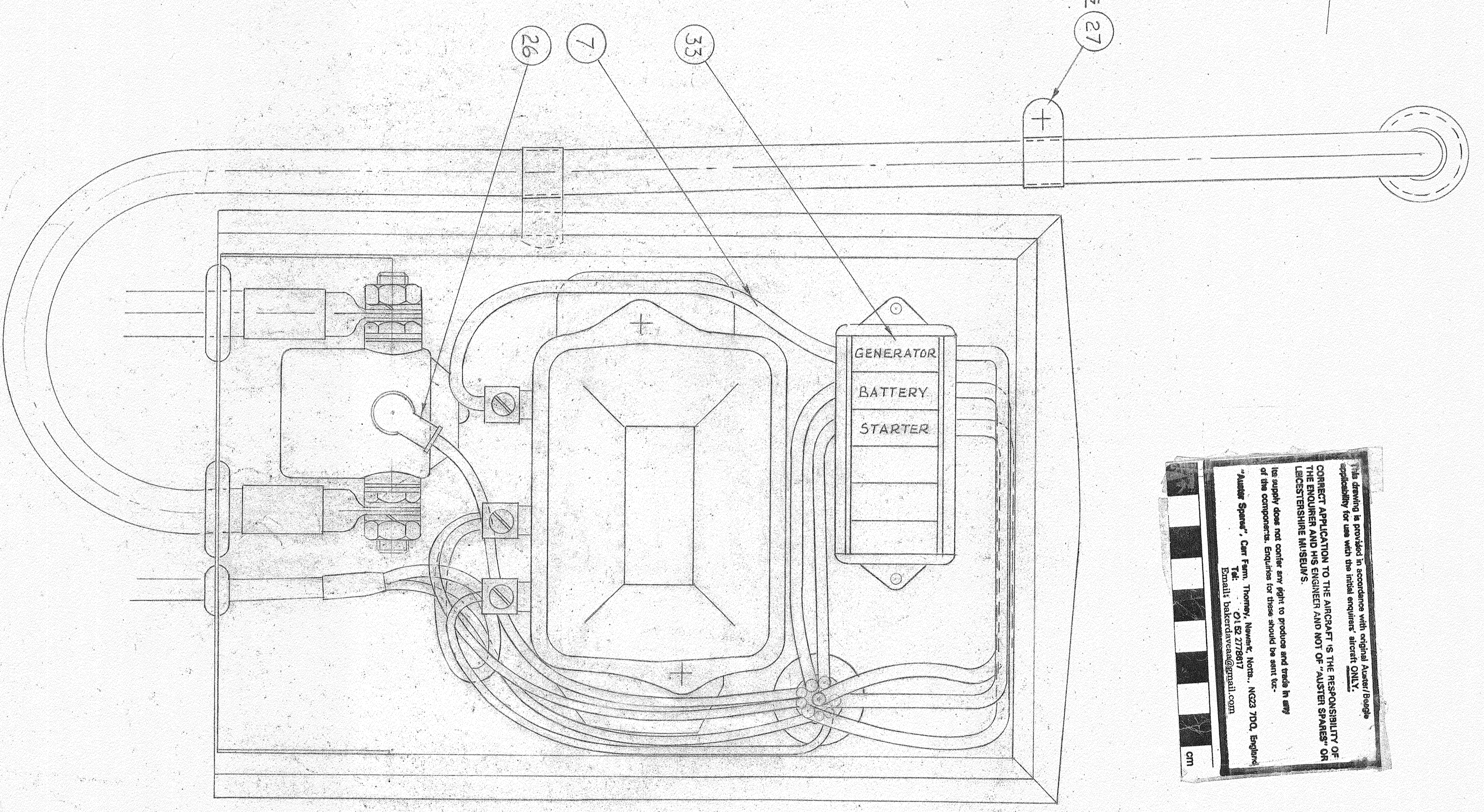
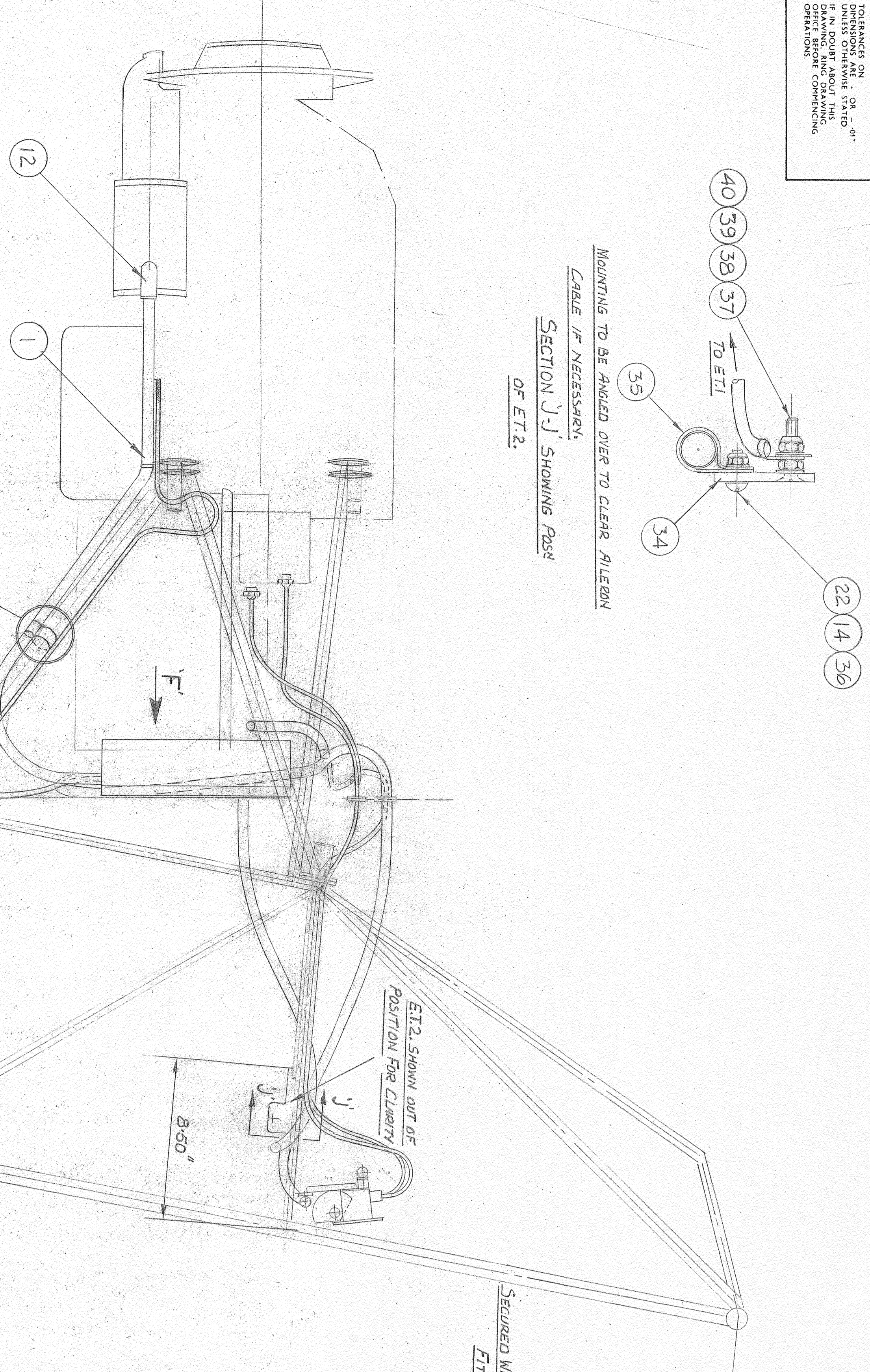
E.T.2. SHOWS AIR AT
 POSITION FOR CLAMP

SECURED WITH EXISTING
 FITTINGS.



FOR DETAIL OF CABLE FITTING
 SEE DETAIL 'G'.

NOTE
 NO P.V.C. OR EMPURE TUBE IS TO BE
 FITTED ROUND CABLES AT THESE 2 CLIPS.



- NOTES:
1. FOR WIRING DIAGRAM SEE DRAWING D-1, 287
 2. THE GENERATOR & STARTER ARE EARTHED THROUGH THEIR ATTACHMENTS TO THE ENGINE.
 3. FOR BATTERY INSTALLATION SEE DOG. NO. DJK 924
 4. FOR EQUIPMENT ON FIREWALL SEE DOG. NO. DJK 924
 5. WHEN CONNECTING CABLES TO EQUIPMENT FITTED WITH TERMINALS THE CONDUCTOR IS TO ENTER ON THE LEFT SIDE OF THE TERMINAL SCREW TO FOLLOW THE SCREW ROTATION.
 6. P.V.C. TUBE OR EMPURE TUBE IS TO BE FITTED ROUND CABLES AT CLIPS.
 7. CABLES AT REAR OF SUB-PANEL TO BE BUNDLED TOGETHER AND BOUND WITH Waxed COPD. AS NECESSARY.

REV.	DATE	BY	CHKD.	DESCRIPTION
1	2/1/52	J.L.	J.L.	ISSUE FOR PRODUCTION
2	2/1/52	J.L.	J.L.	ISSUE FOR PRODUCTION
3	2/1/52	J.L.	J.L.	ISSUE FOR PRODUCTION
4	2/1/52	J.L.	J.L.	ISSUE FOR PRODUCTION
5	2/1/52	J.L.	J.L.	ISSUE FOR PRODUCTION
6	2/1/52	J.L.	J.L.	ISSUE FOR PRODUCTION
7	2/1/52	J.L.	J.L.	ISSUE FOR PRODUCTION
8	2/1/52	J.L.	J.L.	ISSUE FOR PRODUCTION
9	2/1/52	J.L.	J.L.	ISSUE FOR PRODUCTION
10	2/1/52	J.L.	J.L.	ISSUE FOR PRODUCTION
11	2/1/52	J.L.	J.L.	ISSUE FOR PRODUCTION
12	2/1/52	J.L.	J.L.	ISSUE FOR PRODUCTION
13	2/1/52	J.L.	J.L.	ISSUE FOR PRODUCTION
14	2/1/52	J.L.	J.L.	ISSUE FOR PRODUCTION
15	2/1/52	J.L.	J.L.	ISSUE FOR PRODUCTION
16	2/1/52	J.L.	J.L.	ISSUE FOR PRODUCTION
17	2/1/52	J.L.	J.L.	ISSUE FOR PRODUCTION
18	2/1/52	J.L.	J.L.	ISSUE FOR PRODUCTION
19	2/1/52	J.L.	J.L.	ISSUE FOR PRODUCTION
20	2/1/52	J.L.	J.L.	ISSUE FOR PRODUCTION
21	2/1/52	J.L.	J.L.	ISSUE FOR PRODUCTION
22	2/1/52	J.L.	J.L.	ISSUE FOR PRODUCTION
23	2/1/52	J.L.	J.L.	ISSUE FOR PRODUCTION
24	2/1/52	J.L.	J.L.	ISSUE FOR PRODUCTION
25	2/1/52	J.L.	J.L.	ISSUE FOR PRODUCTION
26	2/1/52	J.L.	J.L.	ISSUE FOR PRODUCTION
27	2/1/52	J.L.	J.L.	ISSUE FOR PRODUCTION
28	2/1/52	J.L.	J.L.	ISSUE FOR PRODUCTION
29	2/1/52	J.L.	J.L.	ISSUE FOR PRODUCTION
30	2/1/52	J.L.	J.L.	ISSUE FOR PRODUCTION
31	2/1/52	J.L.	J.L.	ISSUE FOR PRODUCTION
32	2/1/52	J.L.	J.L.	ISSUE FOR PRODUCTION
33	2/1/52	J.L.	J.L.	ISSUE FOR PRODUCTION
34	2/1/52	J.L.	J.L.	ISSUE FOR PRODUCTION
35	2/1/52	J.L.	J.L.	ISSUE FOR PRODUCTION
36	2/1/52	J.L.	J.L.	ISSUE FOR PRODUCTION
37	2/1/52	J.L.	J.L.	ISSUE FOR PRODUCTION
38	2/1/52	J.L.	J.L.	ISSUE FOR PRODUCTION
39	2/1/52	J.L.	J.L.	ISSUE FOR PRODUCTION
40	2/1/52	J.L.	J.L.	ISSUE FOR PRODUCTION
41	2/1/52	J.L.	J.L.	ISSUE FOR PRODUCTION

REV.	DATE	BY	CHKD.	DESCRIPTION
1	2/1/52	J.L.	J.L.	ISSUE FOR PRODUCTION
2	2/1/52	J.L.	J.L.	ISSUE FOR PRODUCTION
3	2/1/52	J.L.	J.L.	ISSUE FOR PRODUCTION
4	2/1/52	J.L.	J.L.	ISSUE FOR PRODUCTION
5	2/1/52	J.L.	J.L.	ISSUE FOR PRODUCTION
6	2/1/52	J.L.	J.L.	ISSUE FOR PRODUCTION
7	2/1/52	J.L.	J.L.	ISSUE FOR PRODUCTION
8	2/1/52	J.L.	J.L.	ISSUE FOR PRODUCTION
9	2/1/52	J.L.	J.L.	ISSUE FOR PRODUCTION
10	2/1/52	J.L.	J.L.	ISSUE FOR PRODUCTION
11	2/1/52	J.L.	J.L.	ISSUE FOR PRODUCTION
12	2/1/52	J.L.	J.L.	ISSUE FOR PRODUCTION
13	2/1/52	J.L.	J.L.	ISSUE FOR PRODUCTION
14	2/1/52	J.L.	J.L.	ISSUE FOR PRODUCTION
15	2/1/52	J.L.	J.L.	ISSUE FOR PRODUCTION
16	2/1/52	J.L.	J.L.	ISSUE FOR PRODUCTION
17	2/1/52	J.L.	J.L.	ISSUE FOR PRODUCTION
18	2/1/52	J.L.	J.L.	ISSUE FOR PRODUCTION
19	2/1/52	J.L.	J.L.	ISSUE FOR PRODUCTION
20	2/1/52	J.L.	J.L.	ISSUE FOR PRODUCTION
21	2/1/52	J.L.	J.L.	ISSUE FOR PRODUCTION
22	2/1/52	J.L.	J.L.	ISSUE FOR PRODUCTION
23	2/1/52	J.L.	J.L.	ISSUE FOR PRODUCTION
24	2/1/52	J.L.	J.L.	ISSUE FOR PRODUCTION
25	2/1/52	J.L.	J.L.	ISSUE FOR PRODUCTION
26	2/1/52	J.L.	J.L.	ISSUE FOR PRODUCTION
27	2/1/52	J.L.	J.L.	ISSUE FOR PRODUCTION
28	2/1/52	J.L.	J.L.	ISSUE FOR PRODUCTION
29	2/1/52	J.L.	J.L.	ISSUE FOR PRODUCTION
30	2/1/52	J.L.	J.L.	ISSUE FOR PRODUCTION
31	2/1/52	J.L.	J.L.	ISSUE FOR PRODUCTION
32	2/1/52	J.L.	J.L.	ISSUE FOR PRODUCTION
33	2/1/52	J.L.	J.L.	ISSUE FOR PRODUCTION
34	2/1/52	J.L.	J.L.	ISSUE FOR PRODUCTION
35	2/1/52	J.L.	J.L.	ISSUE FOR PRODUCTION
36	2/1/52	J.L.	J.L.	ISSUE FOR PRODUCTION
37	2/1/52	J.L.	J.L.	ISSUE FOR PRODUCTION
38	2/1/52	J.L.	J.L.	ISSUE FOR PRODUCTION
39	2/1/52	J.L.	J.L.	ISSUE FOR PRODUCTION
40	2/1/52	J.L.	J.L.	ISSUE FOR PRODUCTION
41	2/1/52	J.L.	J.L.	ISSUE FOR PRODUCTION