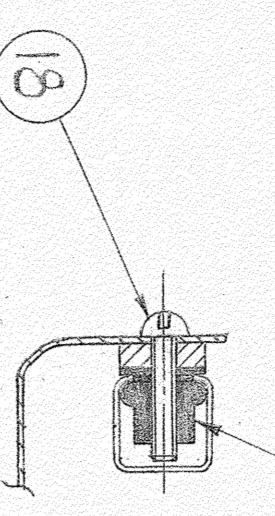
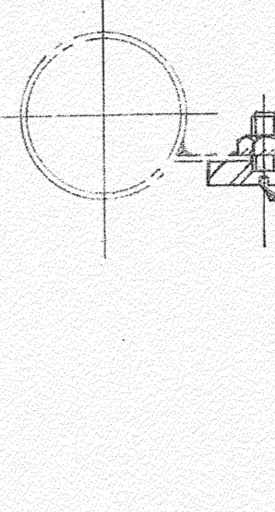


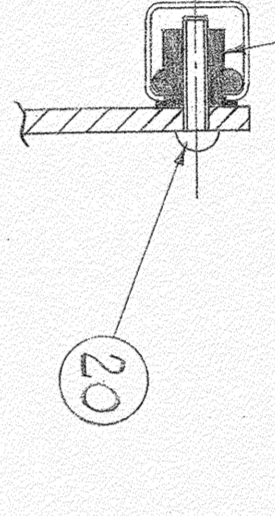
- DO NOT OIL OR GREASE
- INSTALL IN ACCORDANCE WITH THE INSTRUCTIONS ON THE DRAWING
- DO NOT OIL OR GREASE THE FACE OF THE PANEL OR THE FACE OF THE GLOVE BOX
- DO NOT OIL OR GREASE THE FACE OF THE GLOVE BOX



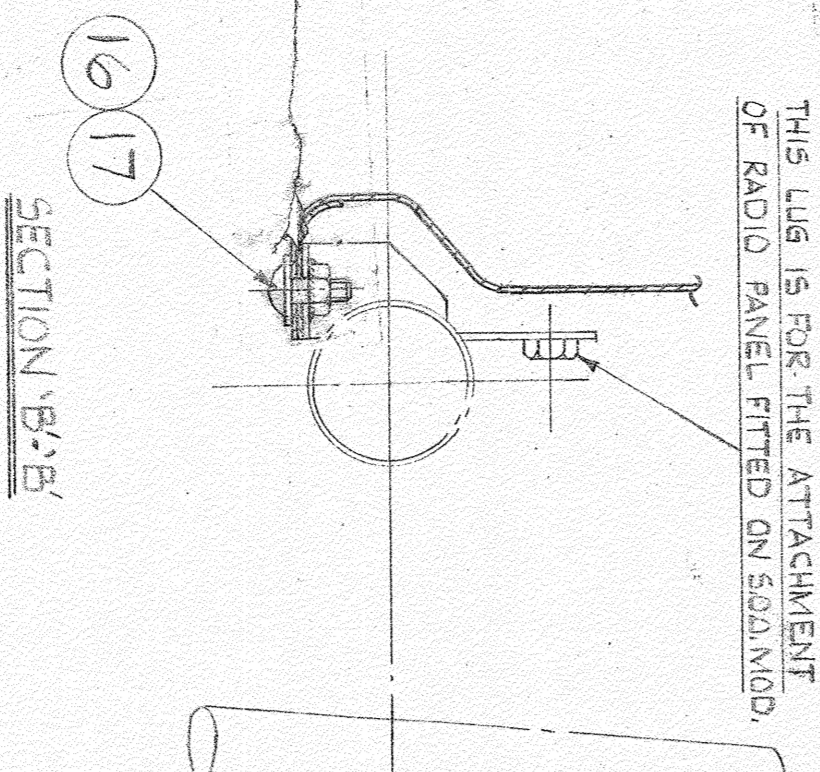
SECTION C-C  
TYPICAL FOR THE ATTACHMENT OF GLOVE BOX TO BOW TUBE



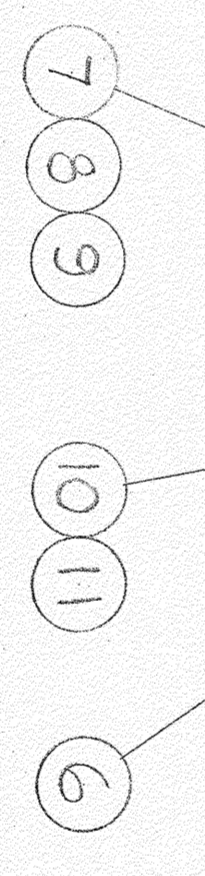
SECTION D-D  
TYPICAL FOR THE ATTACHMENT OF STRIP INSERT PANEL TO CROSS TUBE



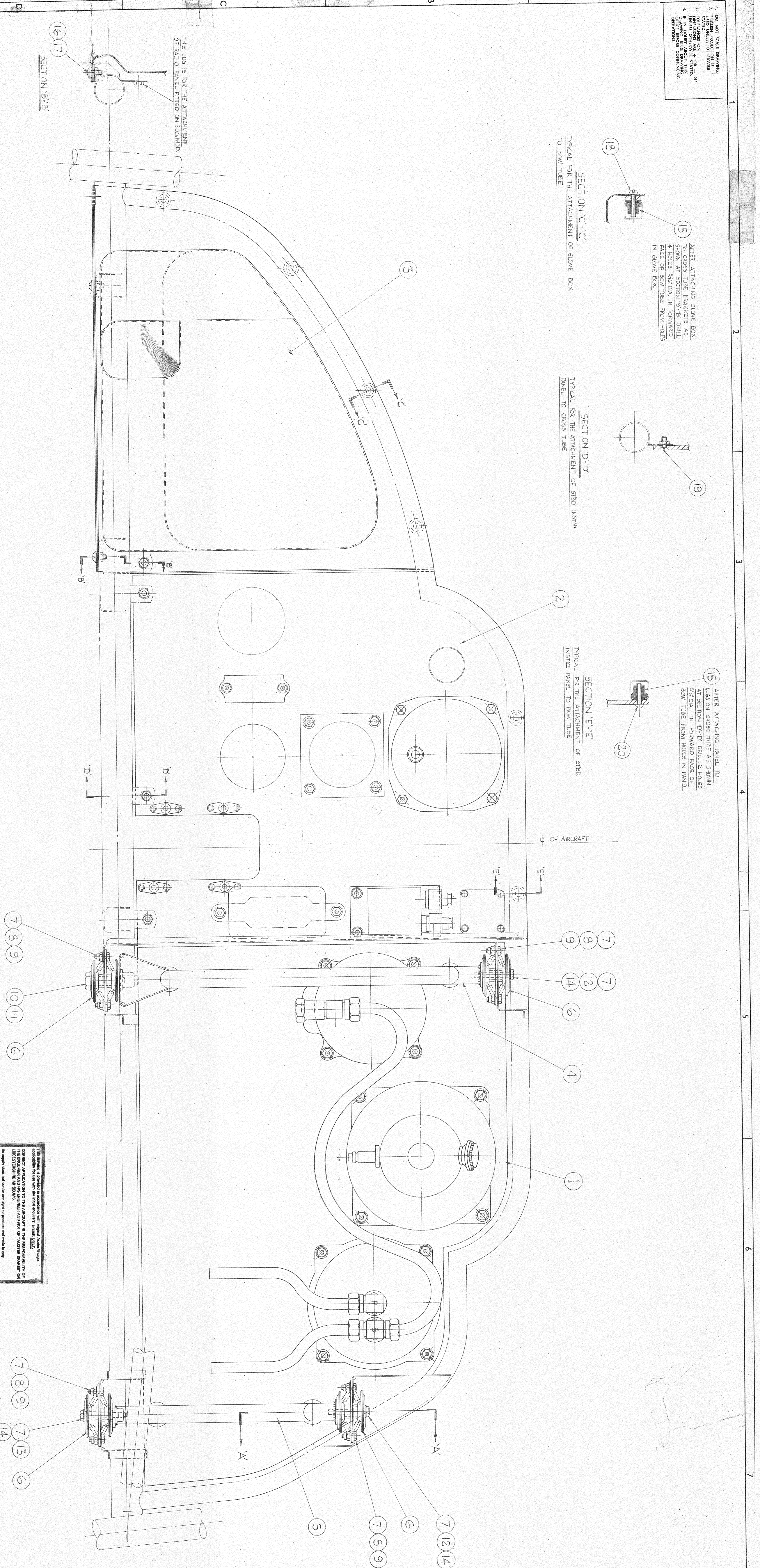
SECTION E-E  
TYPICAL FOR THE ATTACHMENT OF STRIP INSERT PANEL TO BOW TUBE



SECTION B-B  
TYPICAL FOR THE ATTACHMENT OF BOW TUBE TO THE ATTACHMENT OF GLOVE BOX



SECTION A-A (typical)



THIS DRAWING IS THE PROPERTY OF BEAGLE-AUSTER AIRCRAFT LTD. AND IS NOT TO BE REPRODUCED OR TRANSMITTED IN ANY FORM OR BY ANY MEANS, ELECTRONIC OR MECHANICAL, INCLUDING PHOTOCOPYING, RECORDING, OR BY ANY INFORMATION STORAGE AND RETRIEVAL SYSTEM. THE INFORMATION CONTAINED HEREIN IS UNCLASSIFIED EXCEPT WHERE SHOWN OTHERWISE. THIS DOCUMENT IS UNCLASSIFIED EXCEPT WHERE SHOWN OTHERWISE. THIS DOCUMENT IS UNCLASSIFIED EXCEPT WHERE SHOWN OTHERWISE.

ITEM 3, GLOVE BOX MUST BE FITTED BEFORE ITEM 2, STRIP PANEL.

| NO. | QTY | DESCRIPTION         | UNIT | REMARKS |
|-----|-----|---------------------|------|---------|
| 1   | 1   | LA7036A STRIP PANEL | 1    |         |
| 2   | 1   | LA7036B STRIP PANEL | 1    |         |
| 3   | 1   | LA7036C STRIP PANEL | 1    |         |
| 4   | 1   | LA7036D STRIP PANEL | 1    |         |
| 5   | 1   | LA7036E STRIP PANEL | 1    |         |
| 6   | 1   | LA7036F STRIP PANEL | 1    |         |
| 7   | 1   | LA7036G STRIP PANEL | 1    |         |
| 8   | 1   | LA7036H STRIP PANEL | 1    |         |
| 9   | 1   | LA7036I STRIP PANEL | 1    |         |
| 10  | 1   | LA7036J STRIP PANEL | 1    |         |
| 11  | 1   | LA7036K STRIP PANEL | 1    |         |
| 12  | 1   | LA7036L STRIP PANEL | 1    |         |
| 13  | 1   | LA7036M STRIP PANEL | 1    |         |
| 14  | 1   | LA7036N STRIP PANEL | 1    |         |
| 15  | 1   | LA7036O STRIP PANEL | 1    |         |
| 16  | 1   | LA7036P STRIP PANEL | 1    |         |
| 17  | 1   | LA7036Q STRIP PANEL | 1    |         |
| 18  | 1   | LA7036R STRIP PANEL | 1    |         |
| 19  | 1   | LA7036S STRIP PANEL | 1    |         |
| 20  | 1   | LA7036T STRIP PANEL | 1    |         |
| 21  | 1   | LA7036U STRIP PANEL | 1    |         |
| 22  | 1   | LA7036V STRIP PANEL | 1    |         |
| 23  | 1   | LA7036W STRIP PANEL | 1    |         |
| 24  | 1   | LA7036X STRIP PANEL | 1    |         |
| 25  | 1   | LA7036Y STRIP PANEL | 1    |         |
| 26  | 1   | LA7036Z STRIP PANEL | 1    |         |
| 27  | 1   | LA7037A STRIP PANEL | 1    |         |
| 28  | 1   | LA7037B STRIP PANEL | 1    |         |
| 29  | 1   | LA7037C STRIP PANEL | 1    |         |
| 30  | 1   | LA7037D STRIP PANEL | 1    |         |

BEAGLE-AUSTER AIRCRAFT LTD. LEICESTER  
 TITLE: INSTALLATION OF INSTRUMENT PANELS  
 PART NO. J.L. 7053/10  
 DRAWING NO. F.J.G. 5.7.37