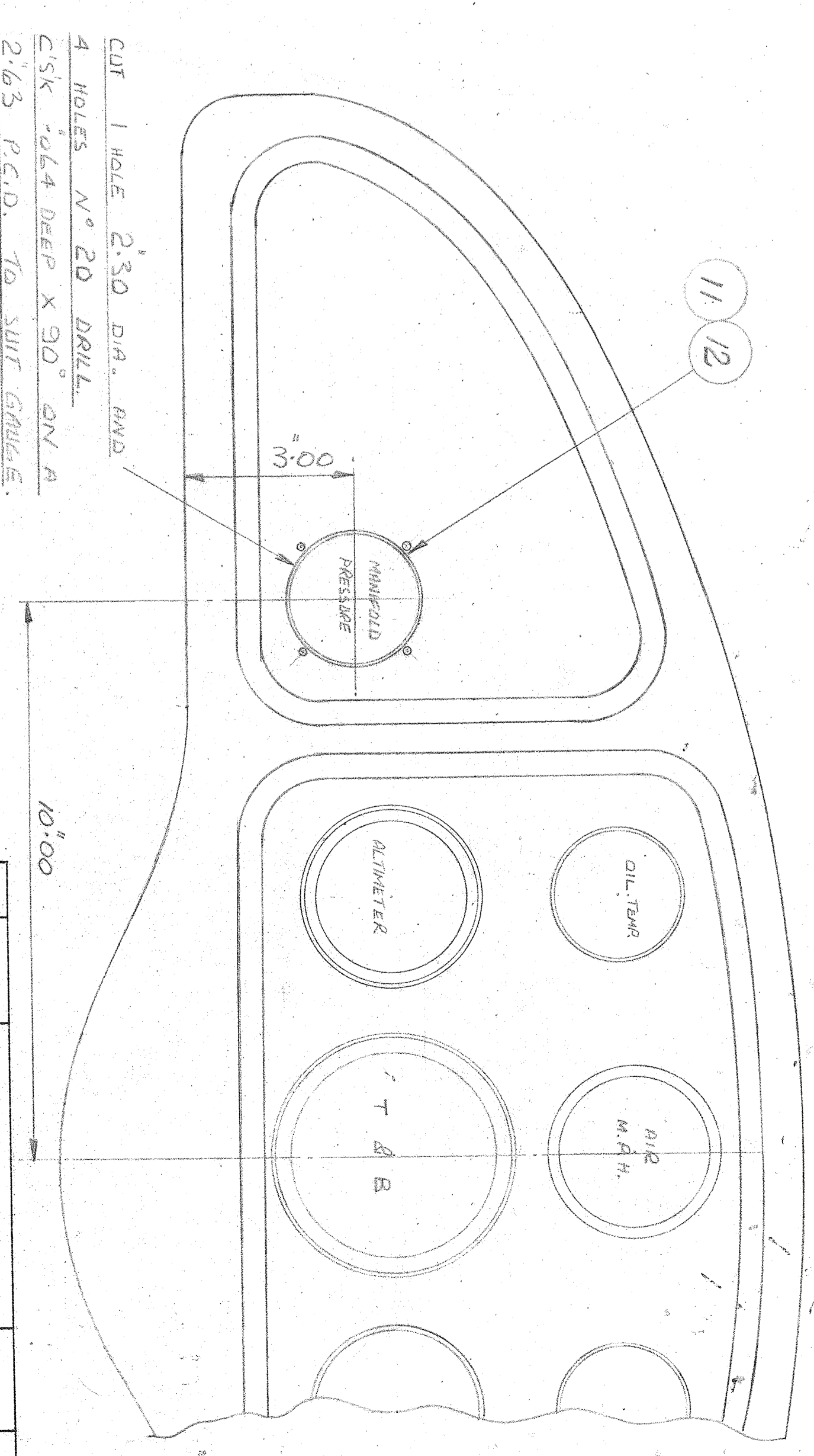
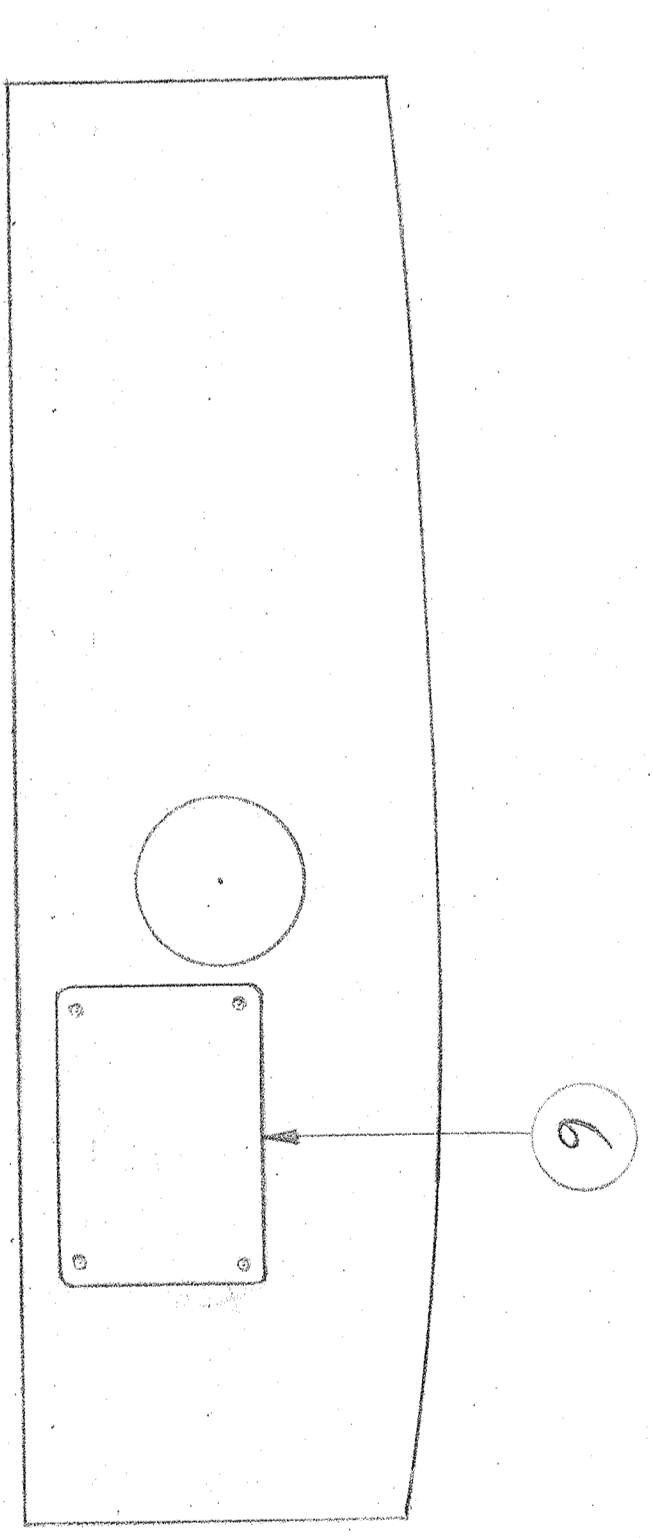
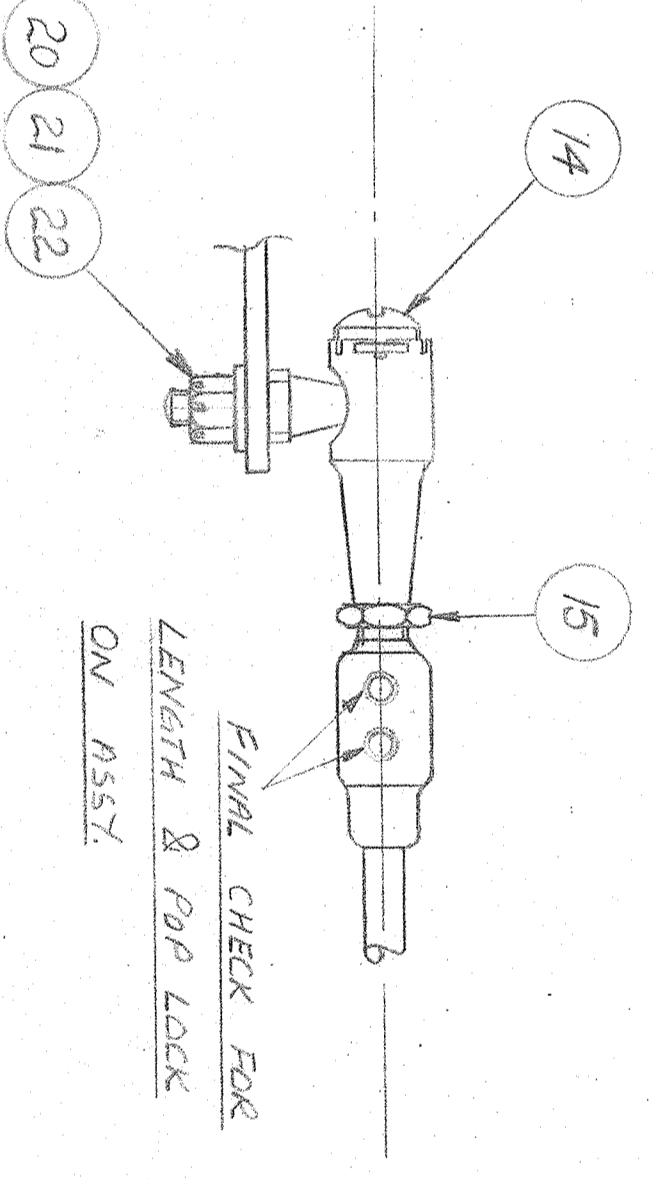
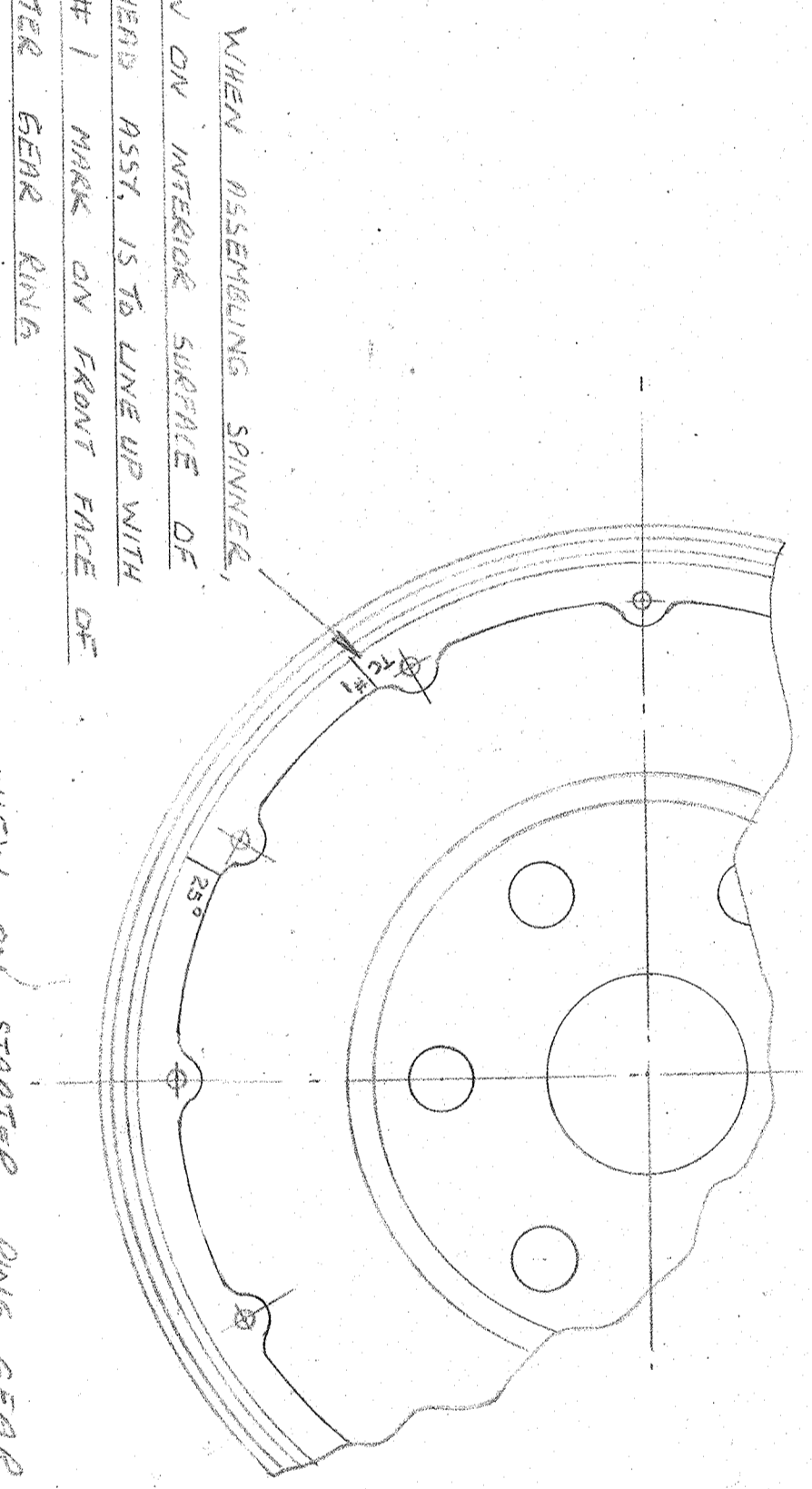
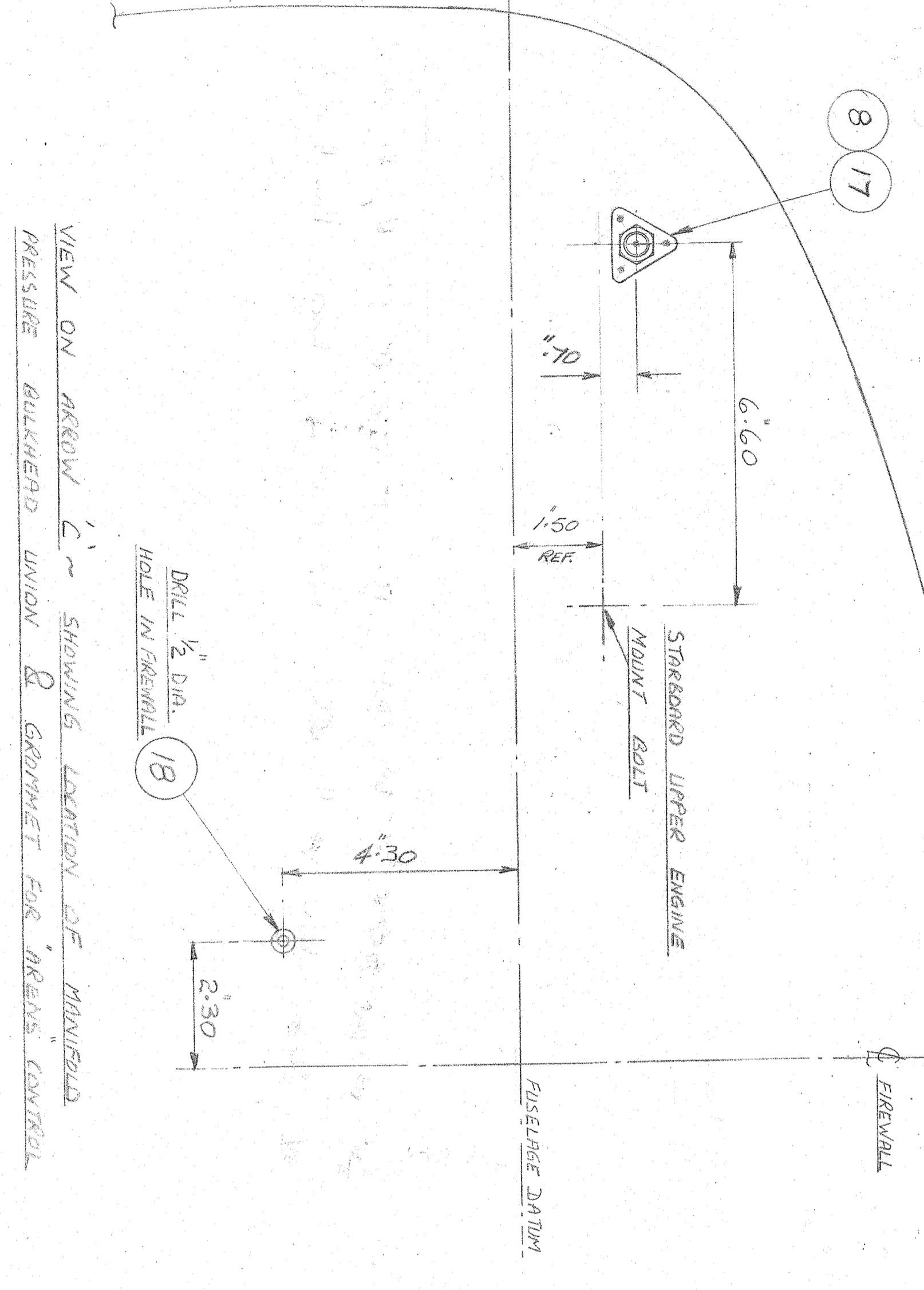
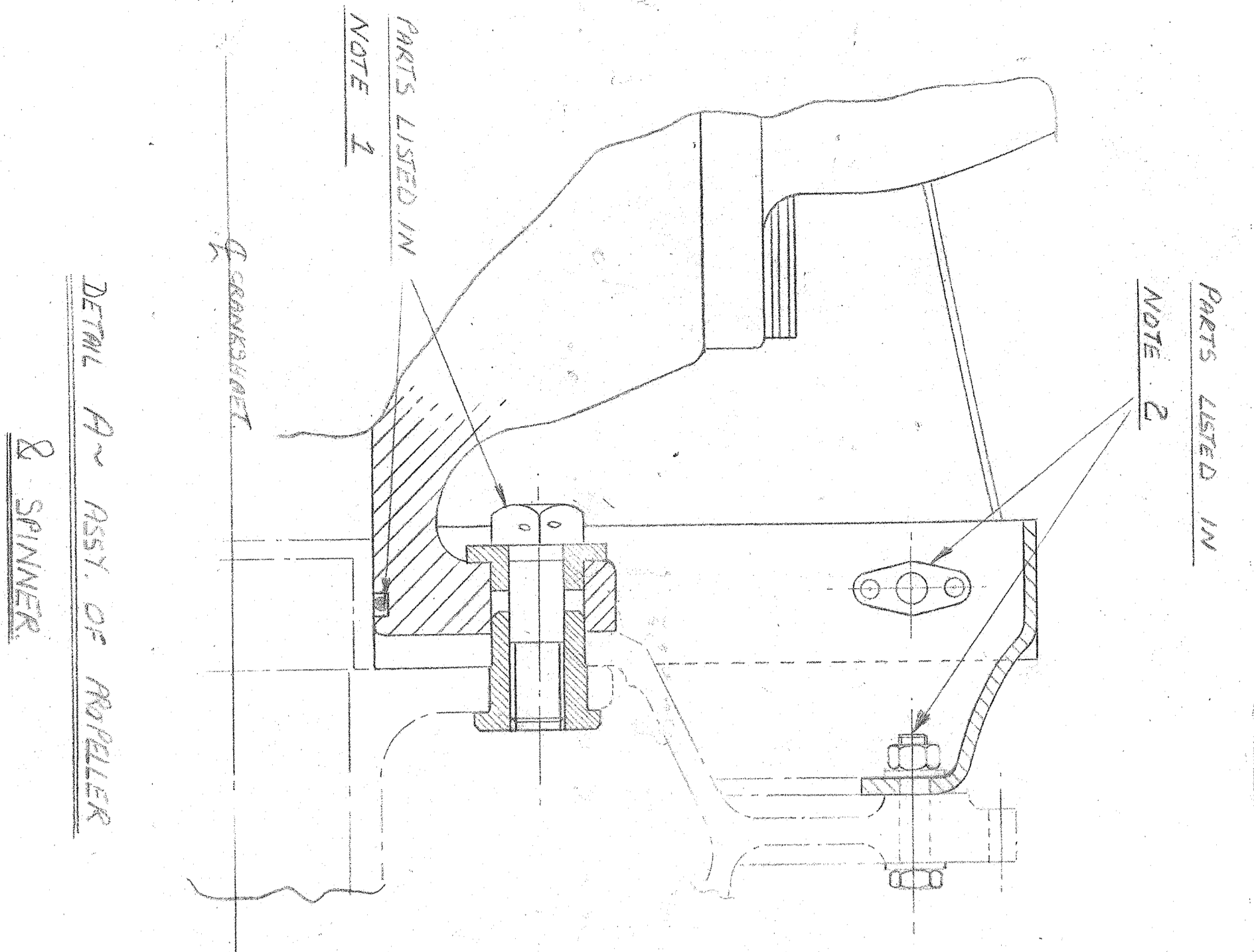
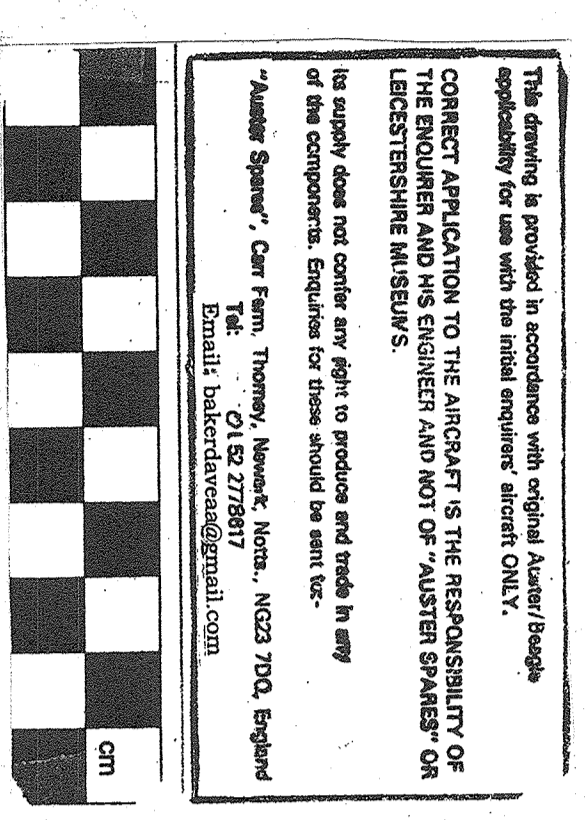
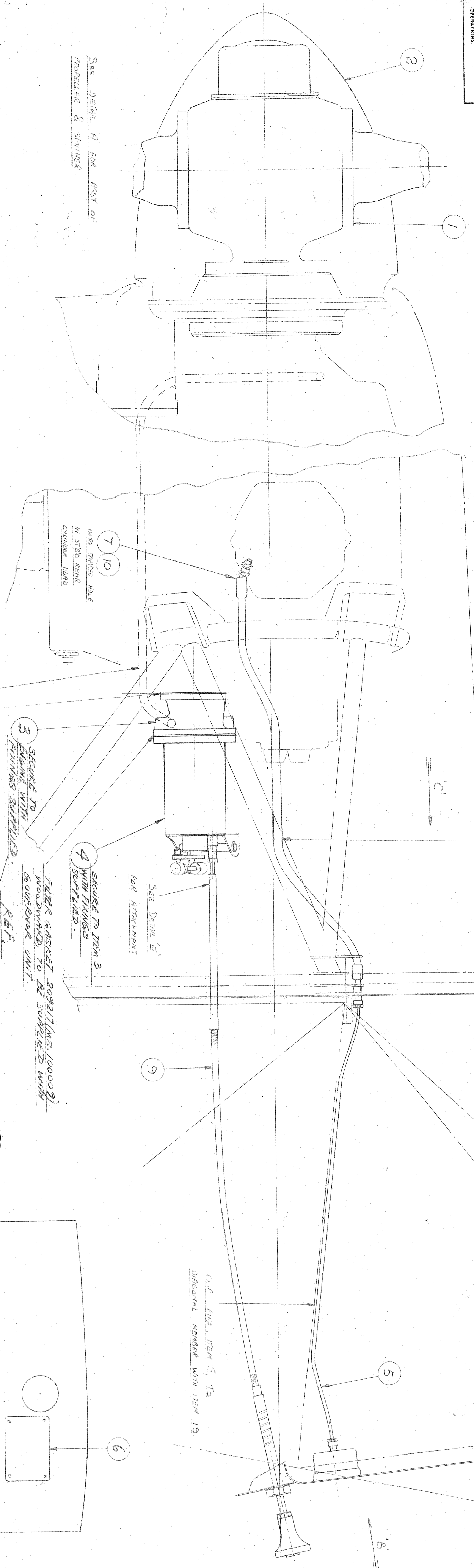


1. DRAWING IS FOR THE ENGINE ASSEMBLY WITH THE SPINNER AND RIVETTER ATTACHED TO THE ENGINE. IT IS NOT TO BE USED FOR THE ENGINE ALONE. THE SPINNER AND RIVETTER ARE SHOWN IN THE POSITION IN WHICH THEY ARE TO BE USED. THE ENGINE IS SHOWN IN THE POSITION IN WHICH IT IS TO BE USED. THE SPINNER AND RIVETTER ARE SHOWN IN THE POSITION IN WHICH THEY ARE TO BE USED.

SEE DETAIL A FOR VIEW OF RIVETTER & SPINNER



REMARKS: SEE FIG. 2183 REF. DWG.

VIEW ON ARROW B D5180 M.C.

NO.	QTY.	DESCRIPTION	UNIT	ISSUE	DATE	BY	CHKD.	APP.
1	1	ENGINE ASSEMBLY	1	1				
2	1	SPINNER & RIVETTER ASSY.	1	1				
3	1	GOVERNOR	1	1				
4	1	WIRE LOCK	1	1				
5	1	CLIP ITEM 7	1	1				
6	1	CLIP ITEM 5	1	1				
7	1	CLIP ITEM 3	1	1				
8	1	MAINSHAFT PRESSURE ROLLERS	1	1				
9	1	GOVERNOR ATTACHMENT	1	1				
10	1	SPINNER RING GEAR	1	1				
11	1	GOVERNOR PIN	1	1				
12	1	GOVERNOR CHECK LOCK	1	1				
13	1	CLIP ITEM 13	1	1				
14	1	CLIP ITEM 14	1	1				
15	1	CLIP ITEM 15	1	1				
16	1	CLIP ITEM 16	1	1				
17	1	CLIP ITEM 17	1	1				
18	1	CLIP ITEM 18	1	1				
19	1	CLIP ITEM 19	1	1				
20	1	CLIP ITEM 20	1	1				
21	1	CLIP ITEM 21	1	1				
22	1	CLIP ITEM 22	1	1				
23	1	CLIP ITEM 23	1	1				
24	1	CLIP ITEM 24	1	1				
25	1	CLIP ITEM 25	1	1				
26	1	CLIP ITEM 26	1	1				
27	1	CLIP ITEM 27	1	1				
28	1	CLIP ITEM 28	1	1				
29	1	CLIP ITEM 29	1	1				
30	1	CLIP ITEM 30	1	1				

ABCDHFG

2

3

4

5

6

7

8

9

PROTECTIVE SCALE: 1/2" = 1" (SEE DRAWING)
 DRAWING NO. 57-1160
 PART NO. 57-1160
 TITLE: ASSY. OF GOVERNMENT SPEED RIVETTER
 AUSTER AIRCRAFT LIMITED, LEICESTER.