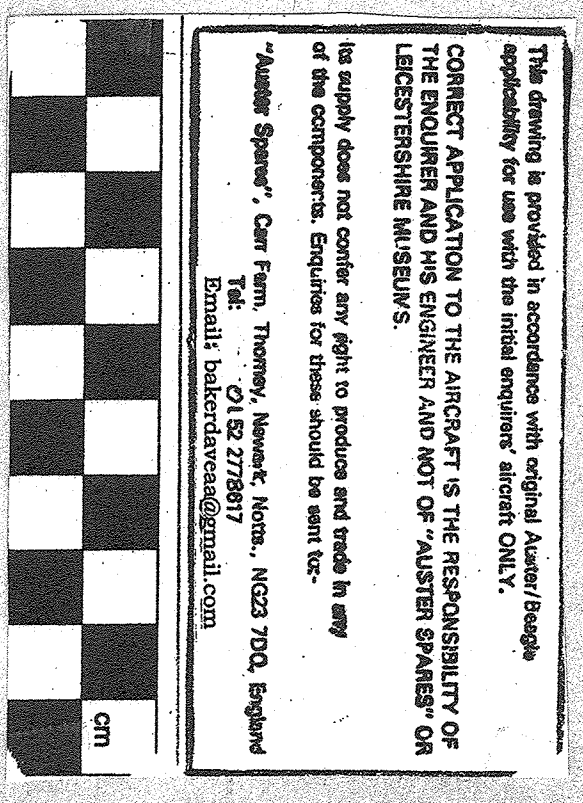


THIS DRAWING IS THE PROPERTY OF THE AUSTER AIRCRAFT LIMITED. IT IS TO BE USED ONLY FOR THE PURPOSES SPECIFIED HEREIN. IT IS NOT TO BE REPRODUCED, COPIED, OR TRANSMITTED IN ANY FORM OR BY ANY MEANS, ELECTRONIC OR MECHANICAL, INCLUDING PHOTOCOPYING, RECORDING, OR BY ANY INFORMATION STORAGE AND RETRIEVAL SYSTEM, WITHOUT THE WRITTEN PERMISSION OF THE AUSTER AIRCRAFT LIMITED.

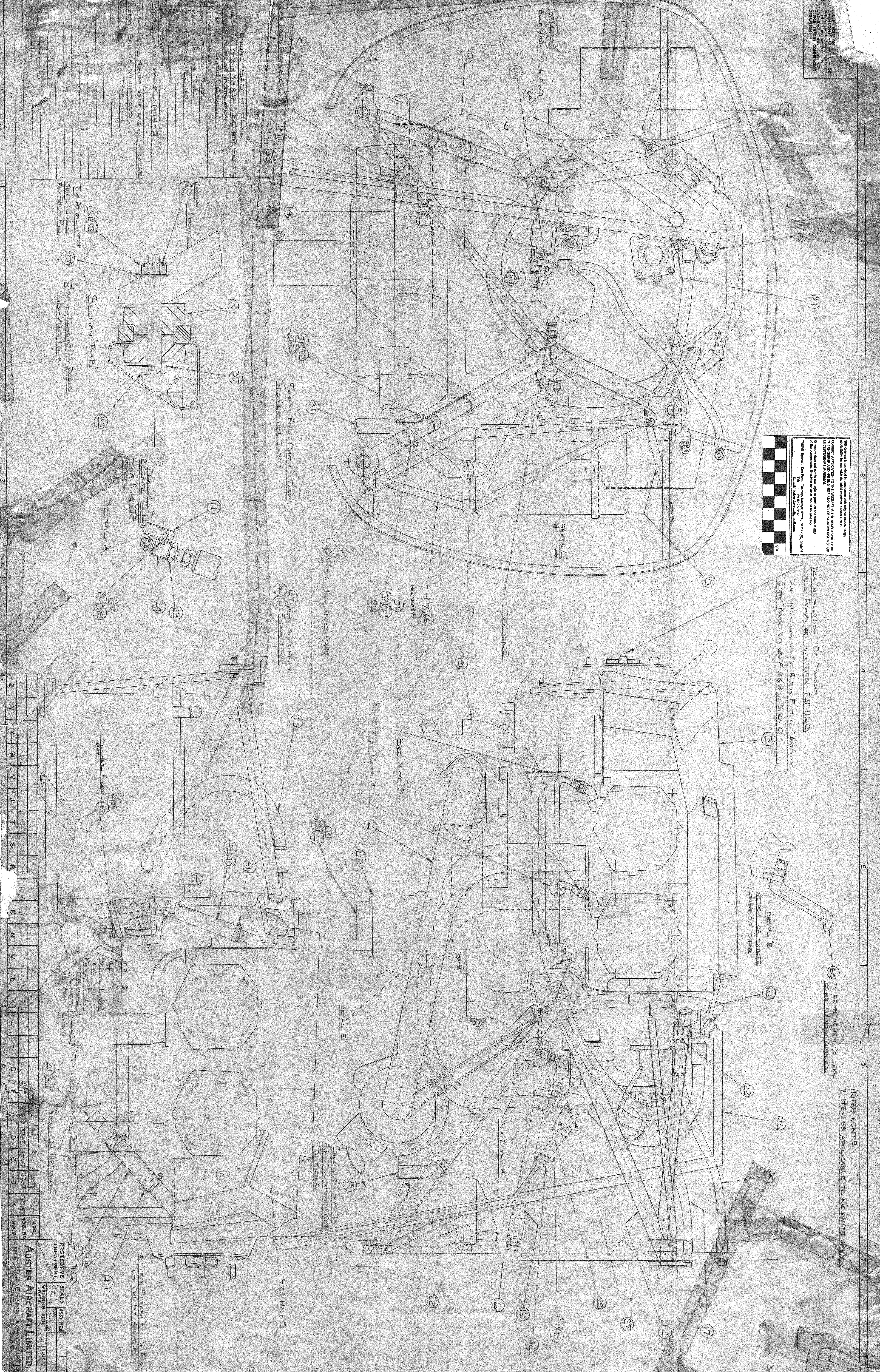


FOR INSTALLATION OF GOVERNOR SPEED REDUCER SEE DRAW. ETR 11620
 FOR INSTALLATION OF FLYING PRESS REDUCER SEE DRAW. NO. ETR 1168 S.O.C.O

NOTES CONT'D
 1. ITEM 66 APPLICABLE TO A/C IN USE ONLY

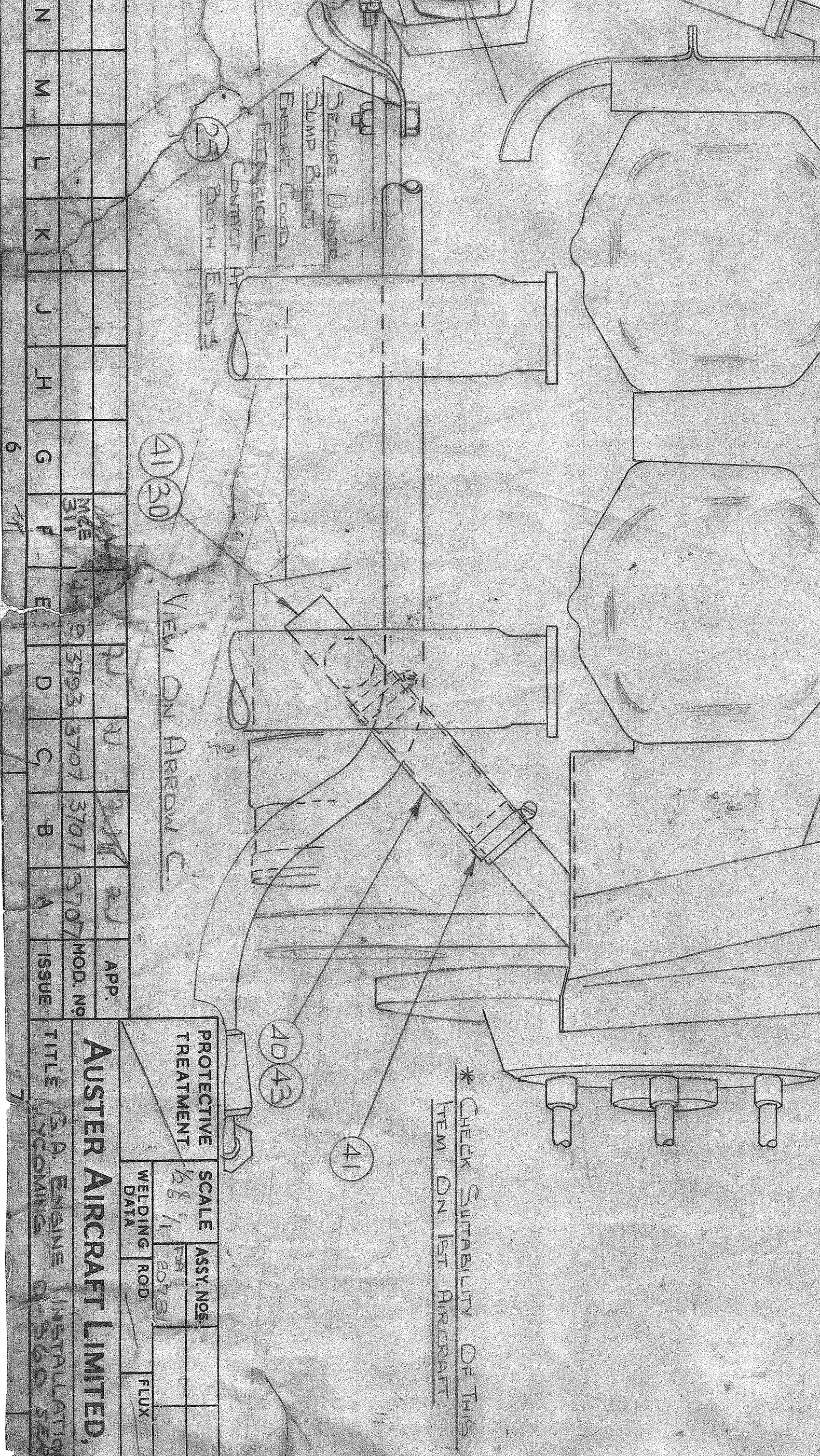
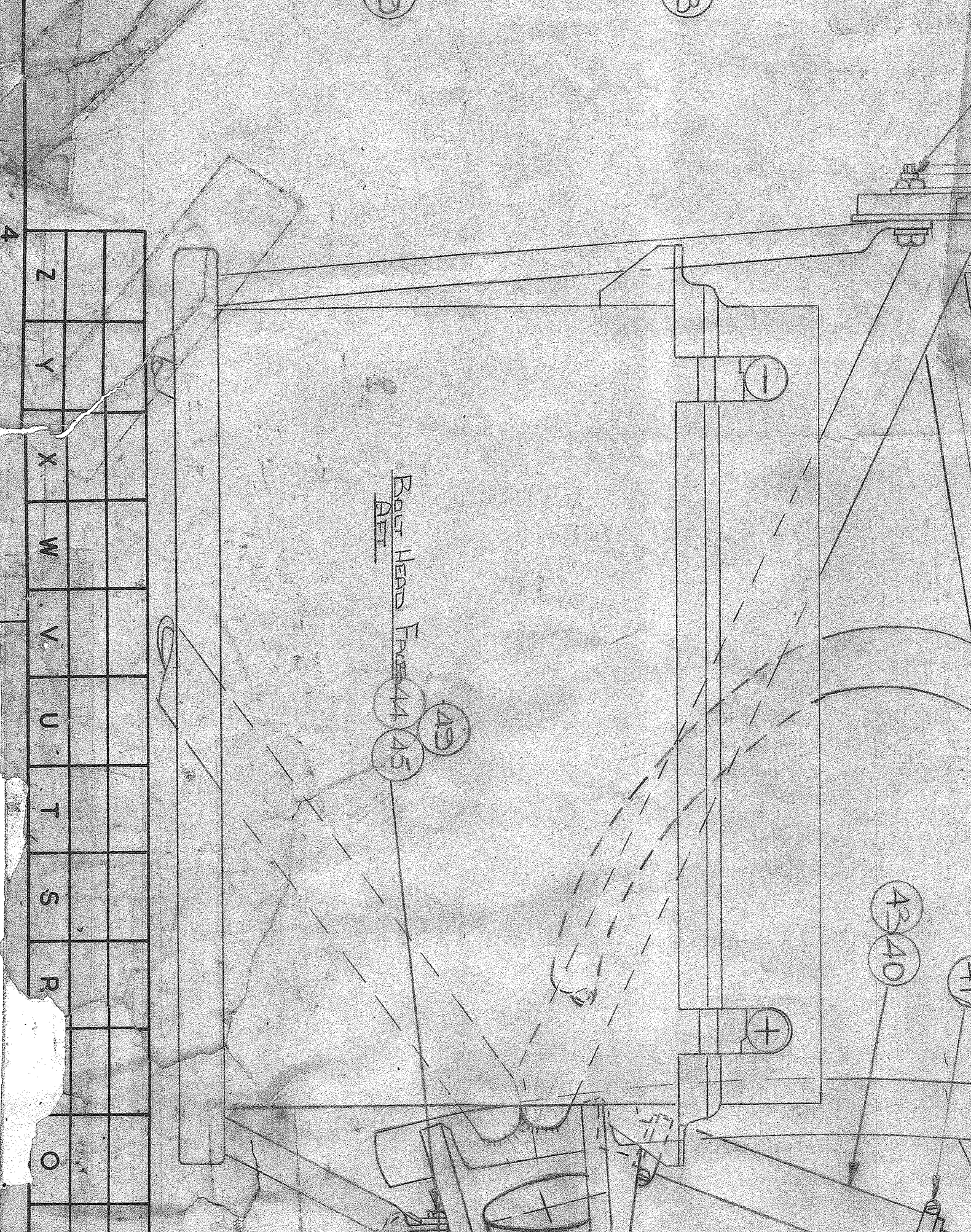
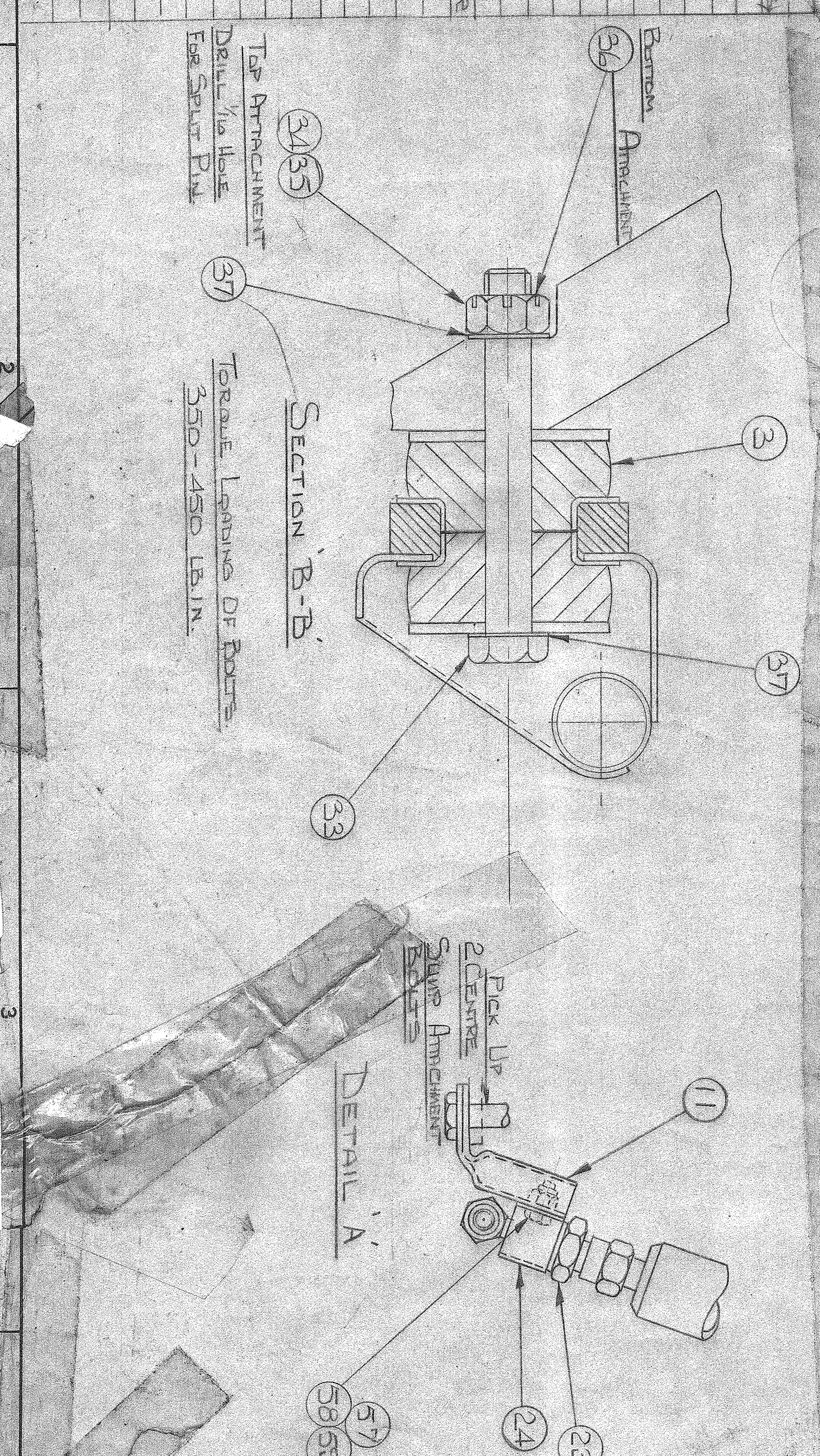
NOTES:
 1. LOCK ALL ENDS WITH L.O.
 2. COVER P.R. HOSE WITH ITEM A3 AND SECURE WITH DOWEL CLIPS.
 3. DRAIN OIL FROM UNION NO. 10 FROM FLY PRESS WITH ITEM A3.
 4. REMOVE HOSE FROM UNION NO. 10.
 5. DATE EXAMINATION BY O.I.
 6. TO REMOVE NO. 10 FROM AIR, TURN L.O.
 7. THE DRAWING LINE NUMBER 2077 REMAINS UNCHANGED.

ITEM NO.	DESCRIPTION	QTY	UNIT
63	WASHER	1	
64	WASHER	1	
65	WASHER	1	
66	WASHER	1	



ENGINE SPECIFICATION

TYPE	4-CYLINDER, 4-CYCLE, 100 H.P. ENGINE
MANUFACTURER	ROBEY & CO. LTD., SHEFFIELD, ENGLAND
MODEL	100 H.P. ENGINE
MAX. RPM	2400
MAX. HORSEPOWER	100 H.P.
MAX. TORQUE	100 LB. FT.
MAX. FUEL CONSUMPTION	100 GALS. PER HOUR
MAX. OIL CONSUMPTION	100 GALS. PER HOUR
MAX. AIR FLOW	100 CUBIC FEET PER MINUTE
MAX. TEMPERATURE	100 DEGREES F.
MAX. VIBRATION	100 INCHES PER SECOND
MAX. NOISE	100 DBA



PROTECTIVE TREATMENT

ITEM NO.	DESCRIPTION	QTY	UNIT
1	WASHER	1	
2	WASHER	1	
3	WASHER	1	
4	WASHER	1	
5	WASHER	1	
6	WASHER	1	
7	WASHER	1	
8	WASHER	1	
9	WASHER	1	
10	WASHER	1	
11	WASHER	1	
12	WASHER	1	
13	WASHER	1	
14	WASHER	1	
15	WASHER	1	
16	WASHER	1	
17	WASHER	1	
18	WASHER	1	
19	WASHER	1	
20	WASHER	1	
21	WASHER	1	
22	WASHER	1	
23	WASHER	1	
24	WASHER	1	
25	WASHER	1	
26	WASHER	1	
27	WASHER	1	
28	WASHER	1	
29	WASHER	1	
30	WASHER	1	
31	WASHER	1	
32	WASHER	1	
33	WASHER	1	
34	WASHER	1	
35	WASHER	1	
36	WASHER	1	
37	WASHER	1	
38	WASHER	1	
39	WASHER	1	
40	WASHER	1	
41	WASHER	1	
42	WASHER	1	
43	WASHER	1	
44	WASHER	1	
45	WASHER	1	
46	WASHER	1	
47	WASHER	1	
48	WASHER	1	
49	WASHER	1	
50	WASHER	1	
51	WASHER	1	
52	WASHER	1	
53	WASHER	1	
54	WASHER	1	
55	WASHER	1	
56	WASHER	1	
57	WASHER	1	
58	WASHER	1	
59	WASHER	1	
60	WASHER	1	
61	WASHER	1	
62	WASHER	1	
63	WASHER	1	
64	WASHER	1	
65	WASHER	1	
66	WASHER	1	