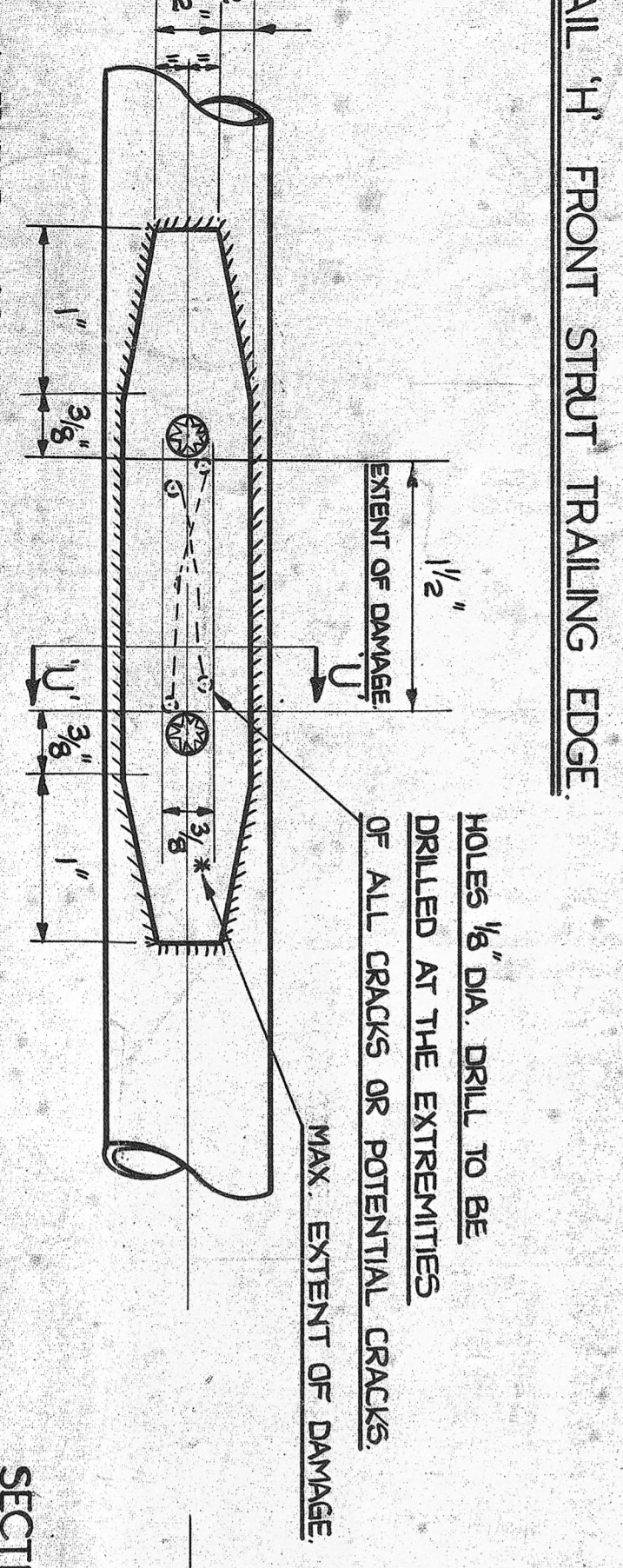
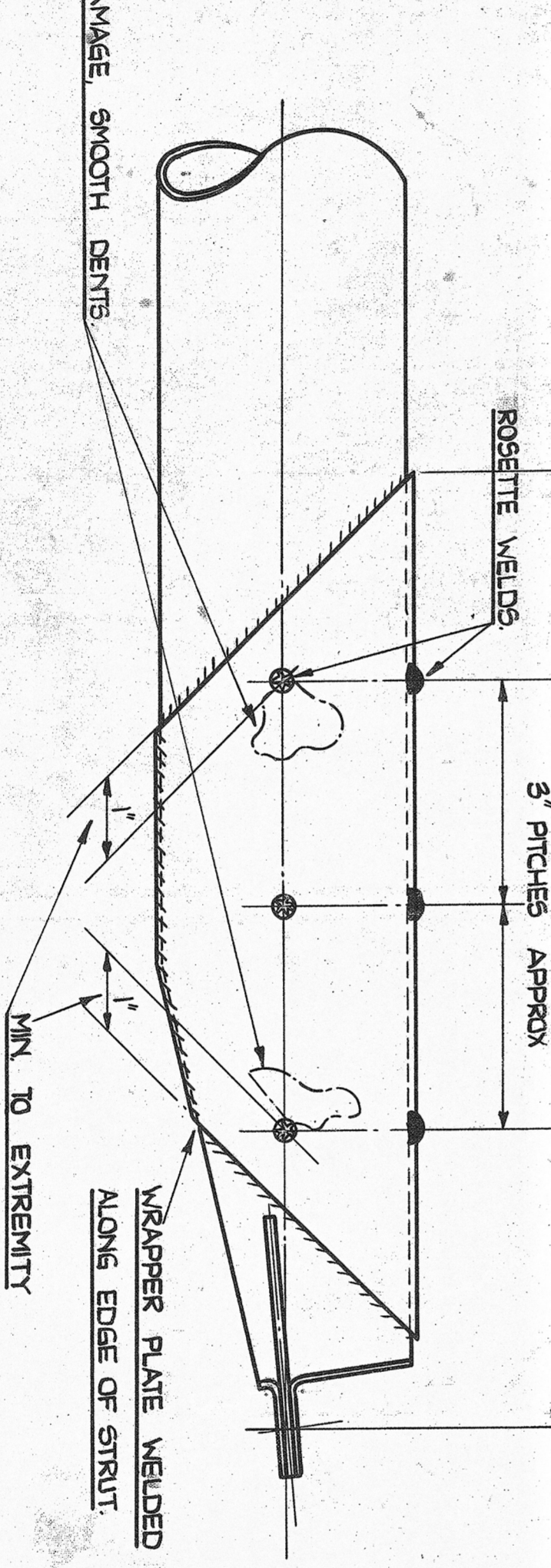
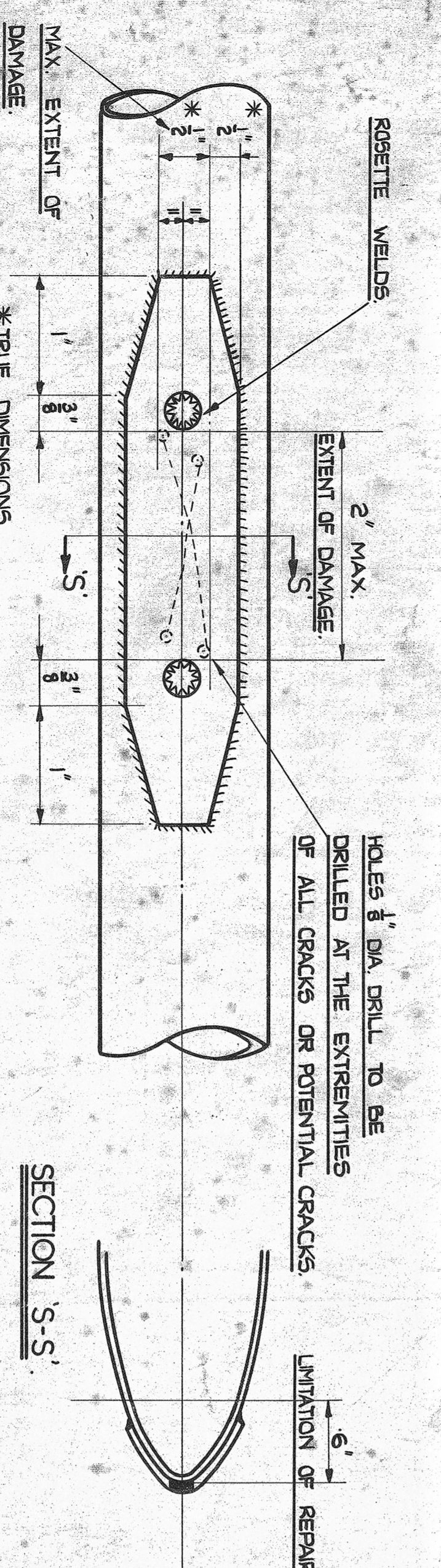
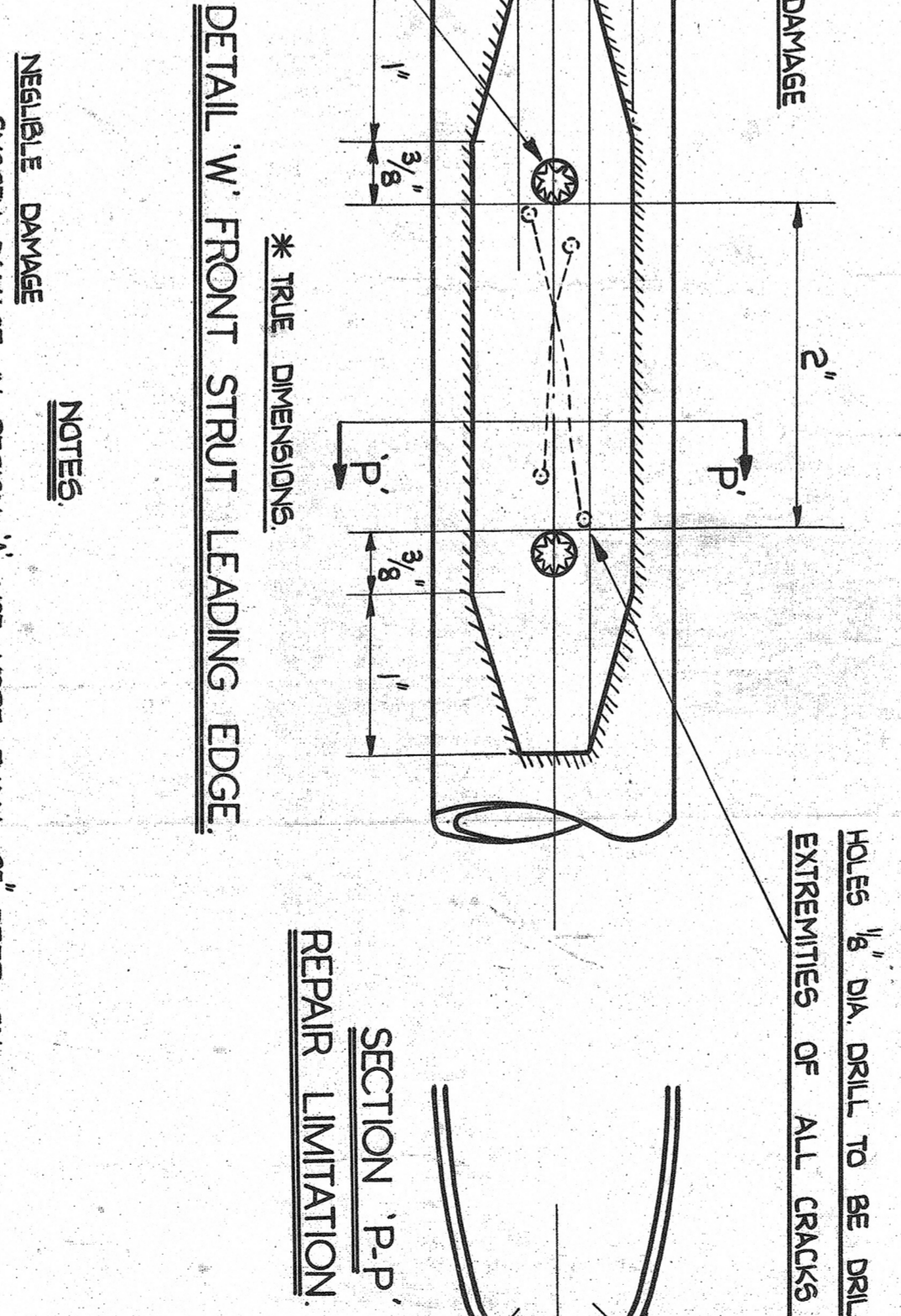
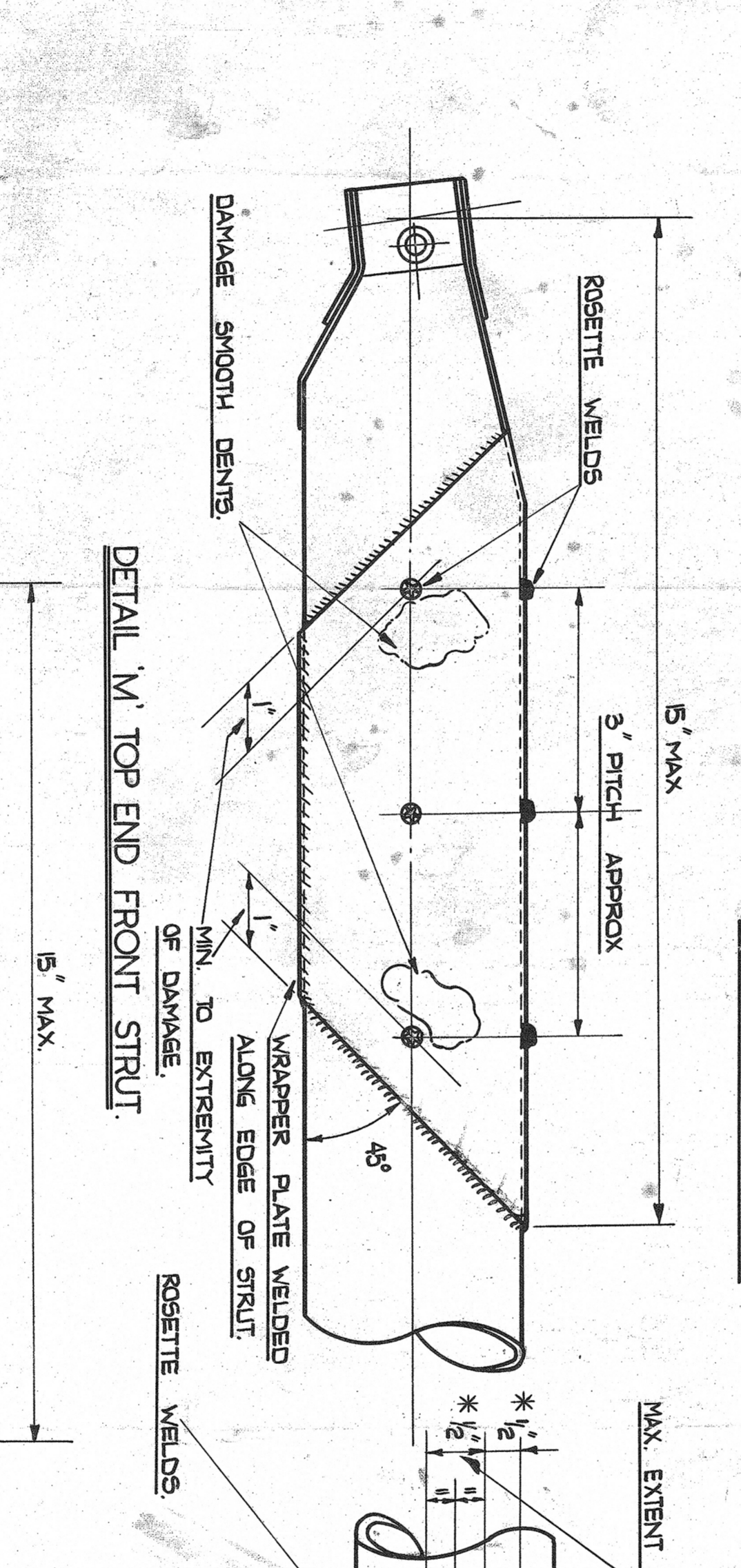
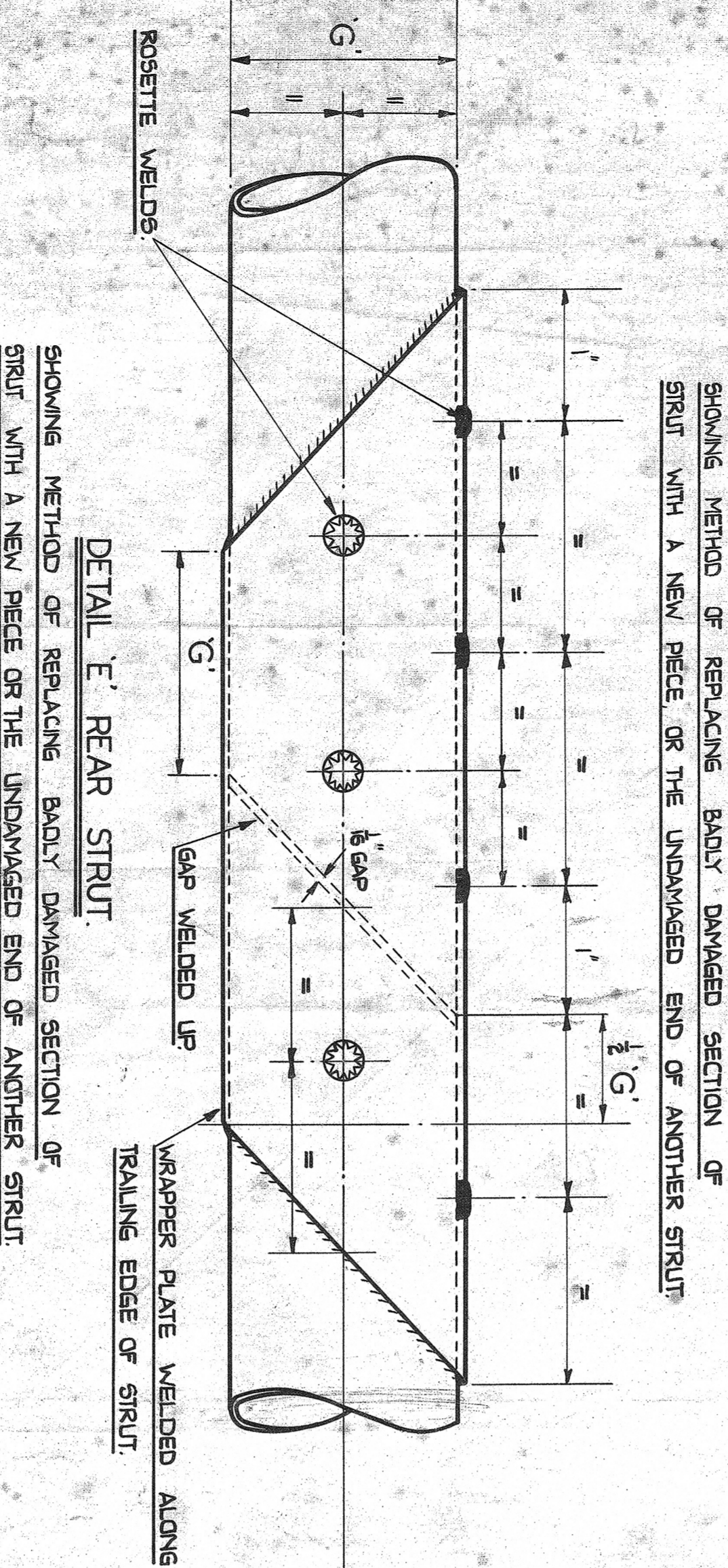
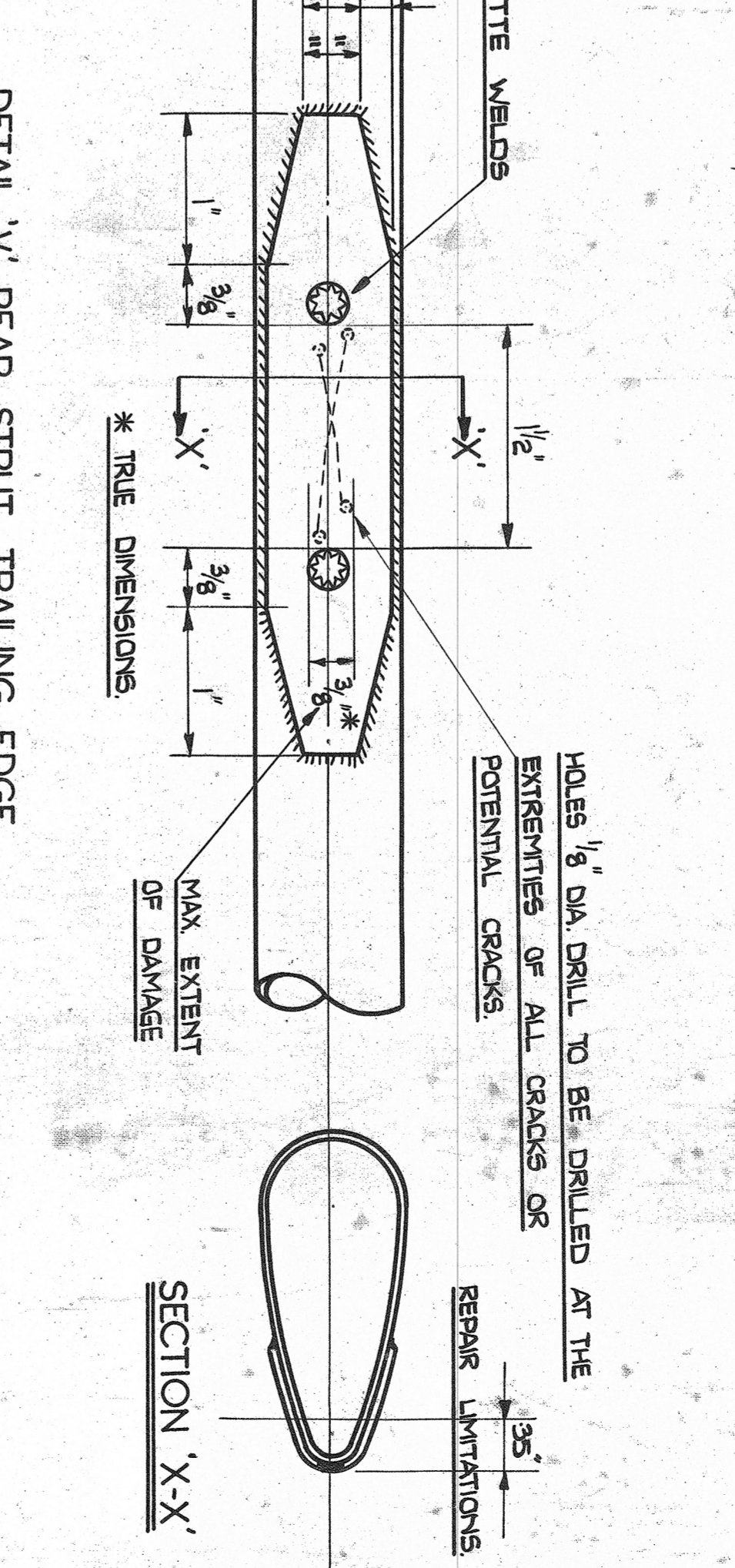
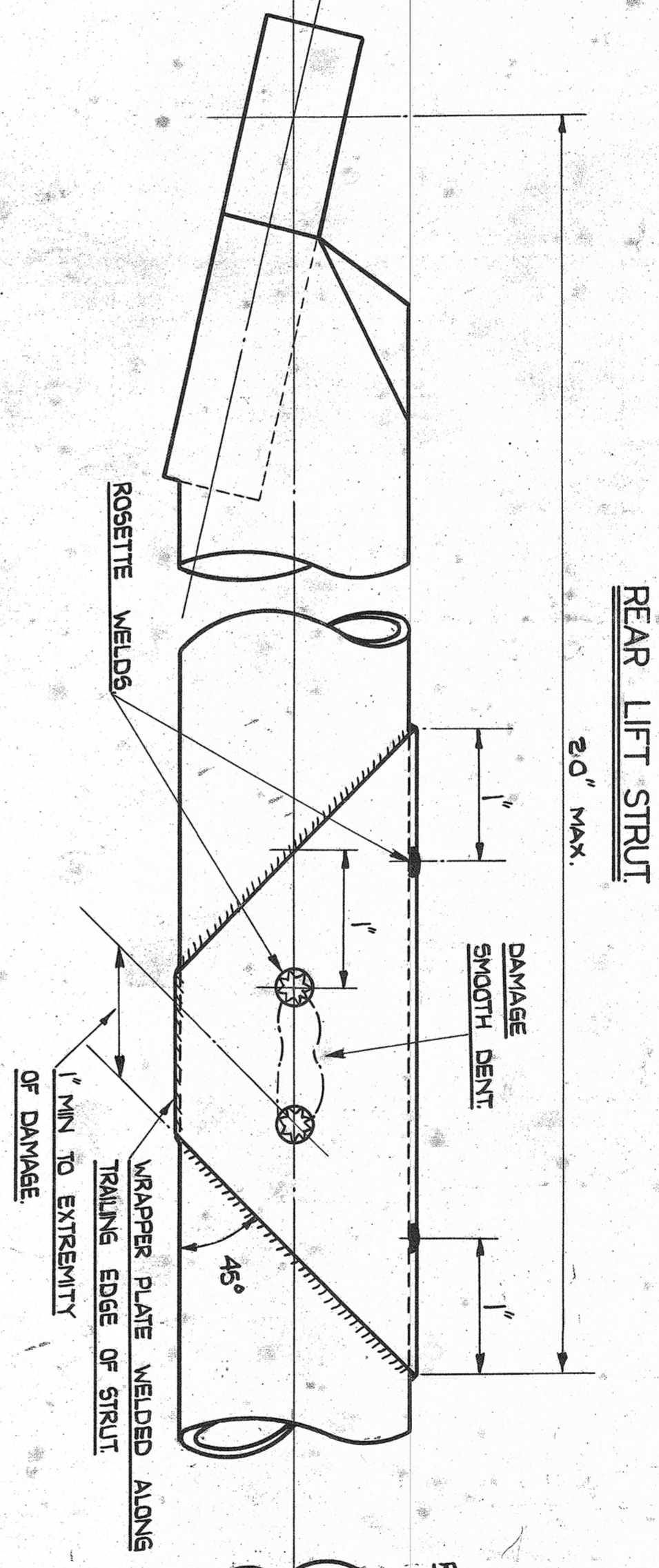
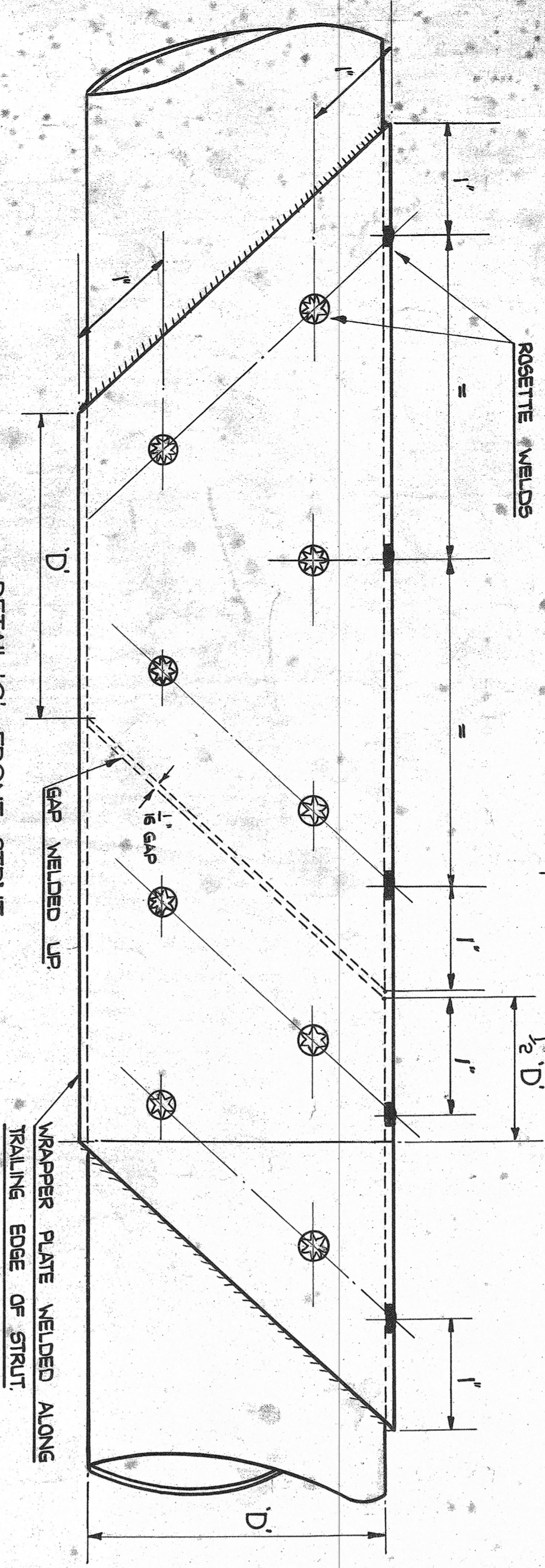
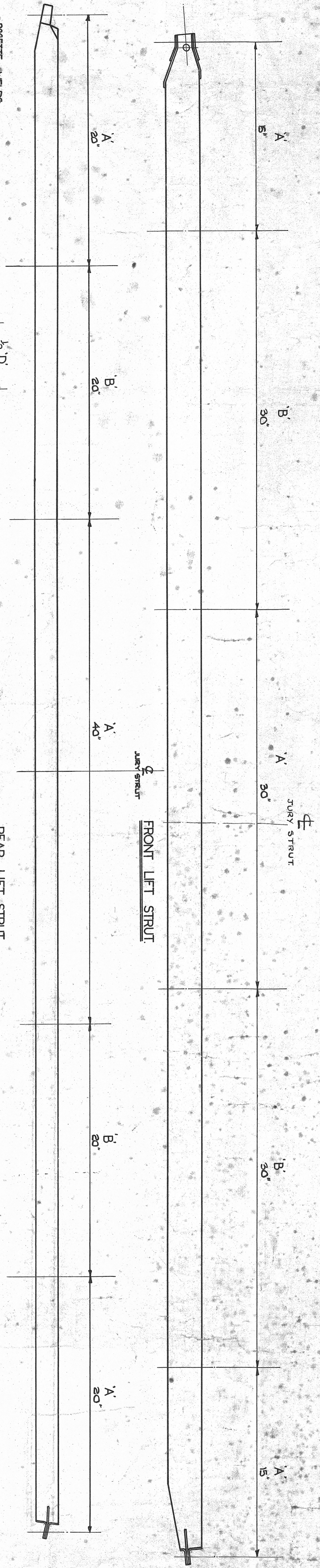


NOT SCALE DRAWING
 2. HOLE BRIGGS, CHILWICH
 3. TOLERANCES ON FRACTIONS
 UNLESS OTHERWISE STATED
 4. IN THE DOUBT ABOUT THIS
 DRAWING, REFER TO THE
 ORIGINAL DRAWING
 OPERATIONS



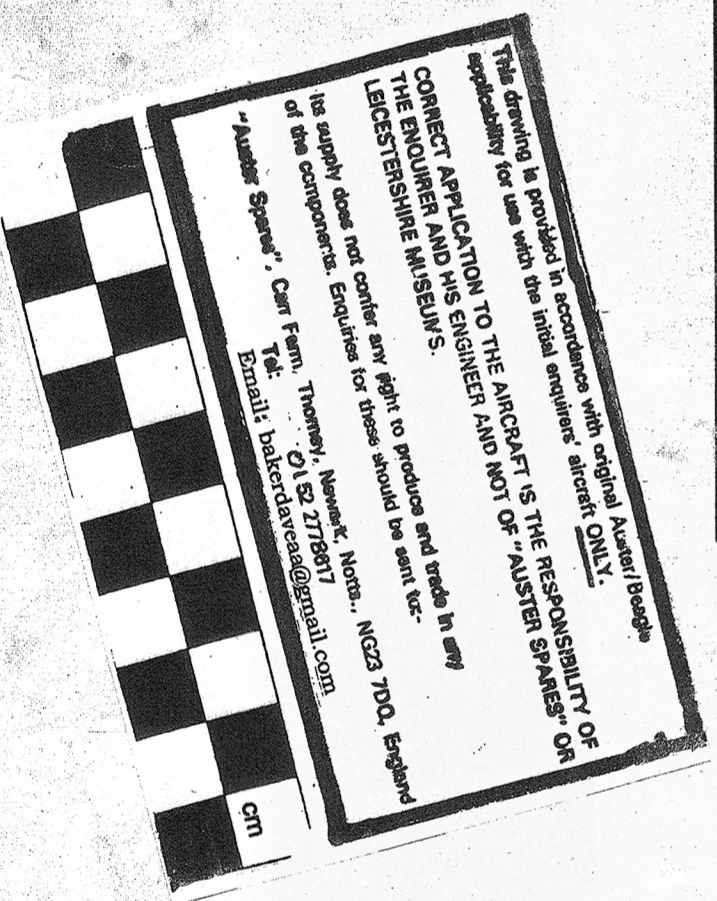
NOTES

NEGLECTABLE DAMAGE
 SMOOTH DAMAGE IN REGION A NOT MORE THAN .05" DEEP ON FRONT STRUT & .05" DEEP ON REAR STRUT. MAXIMUM DIMENSIONS NOT MORE THAN 1" ON FRONT STRUT & 1/2" ON REAR STRUT. IN REGIONS B NOT MORE THAN .05" DEEP ON FRONT STRUT AND .05" DEEP ON REAR STRUT.

SPECIAL NOTE
 NEGLECTABLE DAMAGE MUST BE SMOOTH WITH NO SHARP POINTS OR BURRS OR SUSPICION OF CRACKS

REPAIRABLE DAMAGE
 ALL REPAIRS SHOWN ON THIS DRAWING ARE APPLICABLE TO REGION A ONLY.
 AREA 'B' REPAIRS ARE DEALT WITH IN AP 2440 VOL II PT 3. THIS DRAWING DETAILS REPAIRS TO STREAMLINE SECTION LIFT STRUTS ONLY. REPAIRS TO ROUND STRUTS ARE DETAILED ON REPAIR DRAWING 'K'.

ROSETTE WELDS
 ALL HOLES FOR ROSETTE WELDS TO BE 1/4" DIA.
 MATERIAL FOR ALL WRAPPERS AND PATCHES
 FRONT STRUT 16 SWG. 53 OR DTD 24A
 REAR STRUT 20 SWG. 53 OR DTD 24A



NO.	REV.	DATE	BY	CHKD.

PROTECTIVE TREATMENT	ARMY NO.	ITEM NO.	PART NO.	DESCRIPTION	WARRANTY	REVISION
TAYLORCRAFT AEROPLANES (ENGLAND) LTD LICESTER						