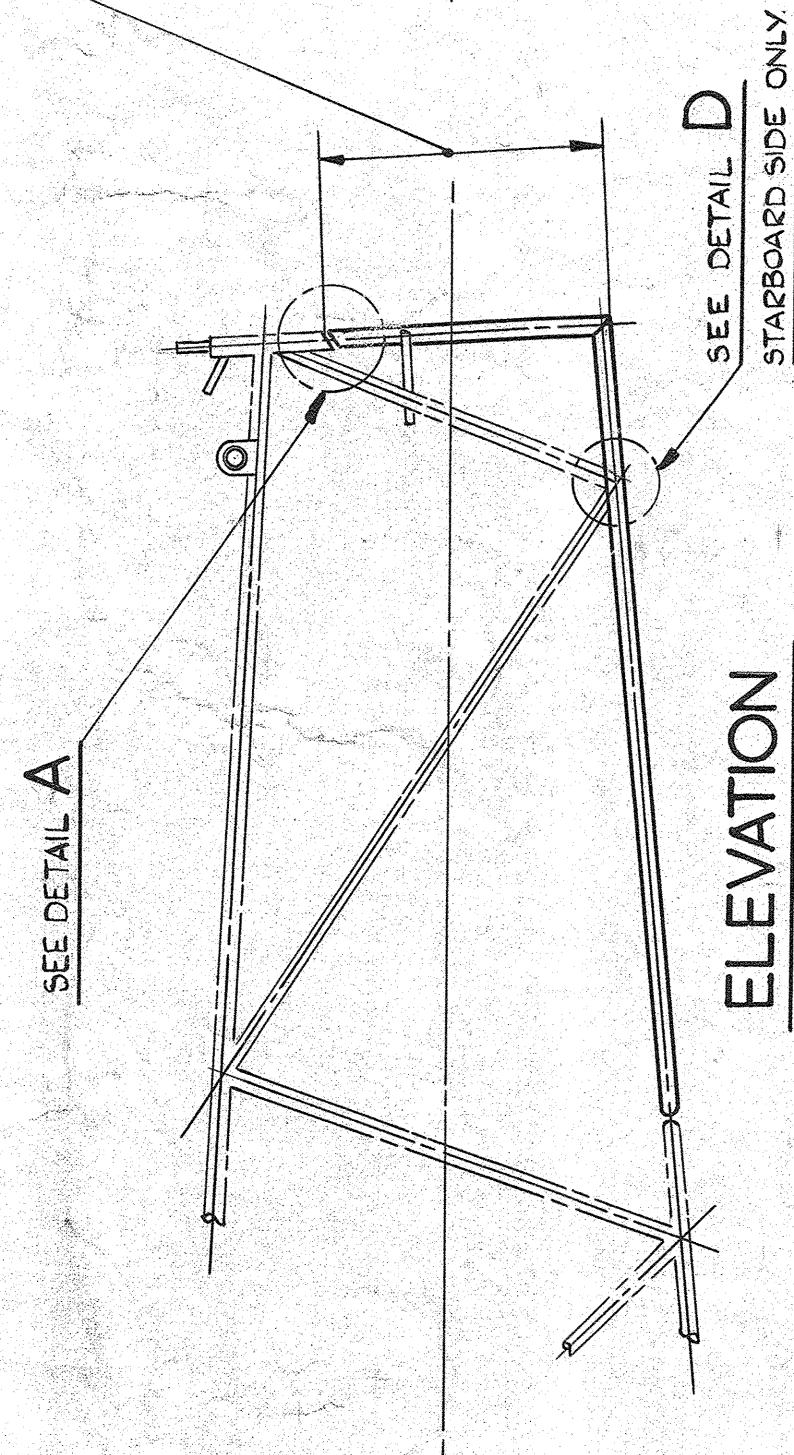
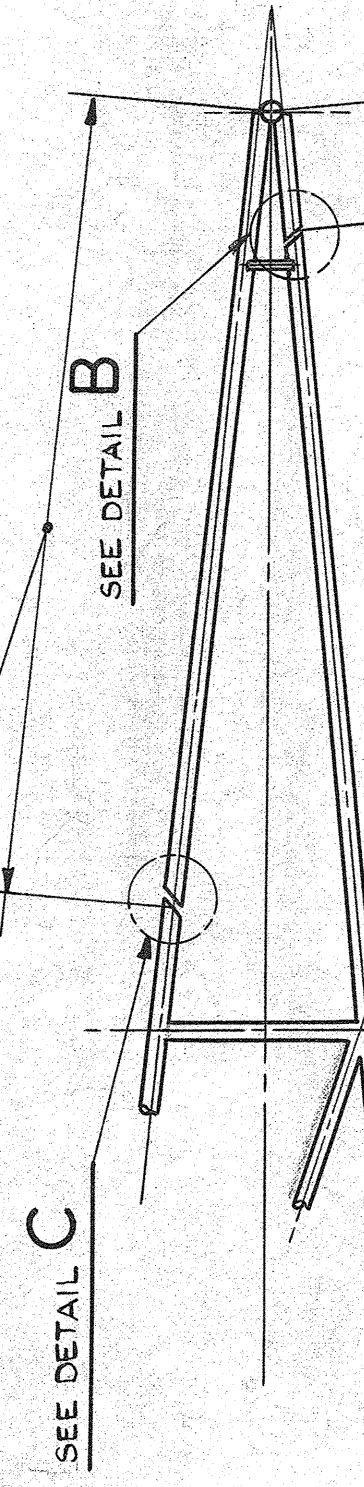


1. DO NOT SCALE DRAWING
2. REFERENCE PRODUCTION IS SHOWN UNLESS OTHERWISE STATED
3. TOLERANCES ARE: OR --OF
4. DIMENSIONS UNLESS OTHERWISE STATED.
5. THIS DRAWING IS THE PROPERTY OF THE COMPANY. IT IS TO BE USED ONLY FOR THE PURPOSES STATED.
6. OFFICE: BIRMINGHAM
7. OPERATIONS

THIS PORTION OF MEMBER TO BE REPLACED.



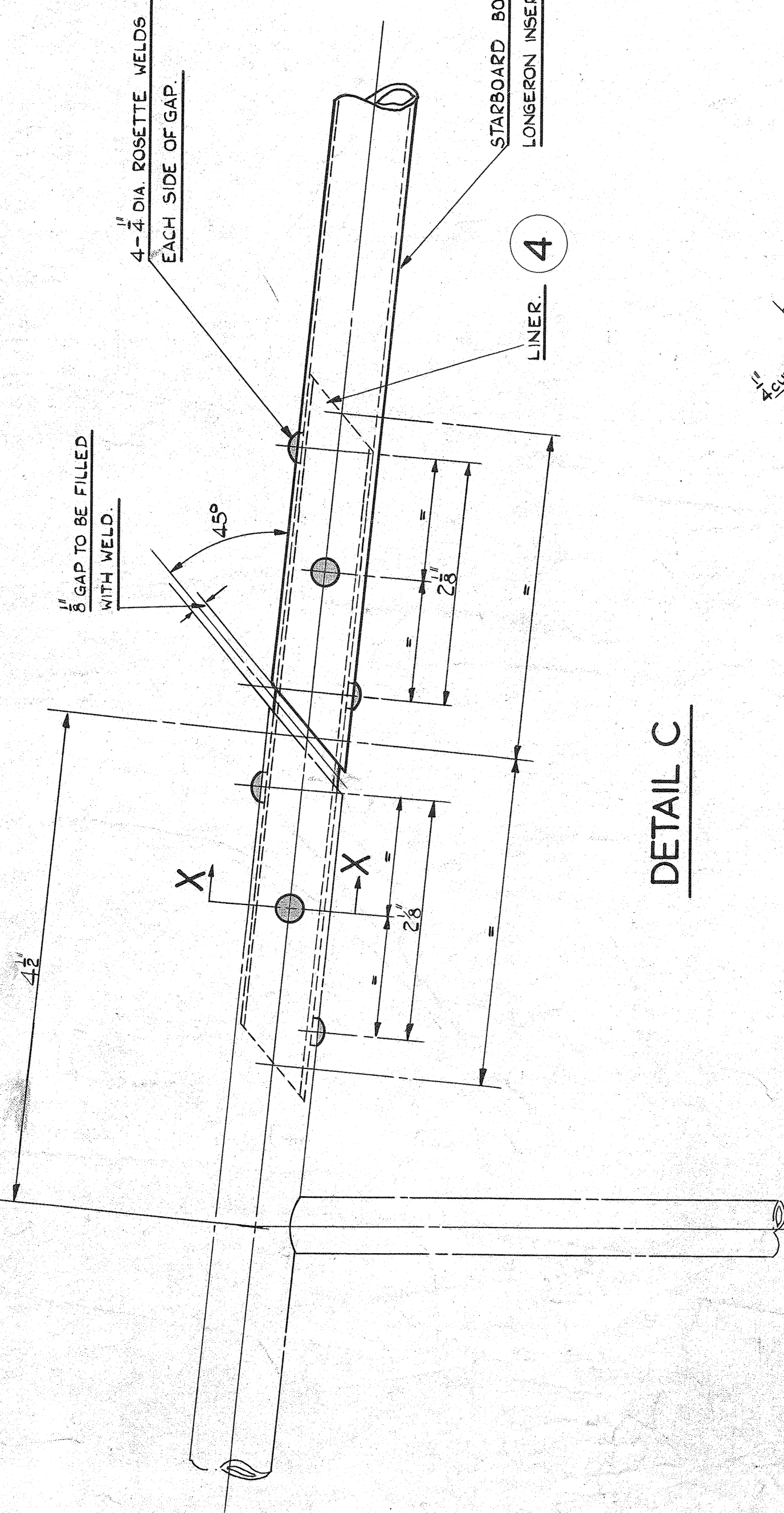
THIS PORTION OF MEMBER TO BE REPLACED (STARBOARD SIDE)



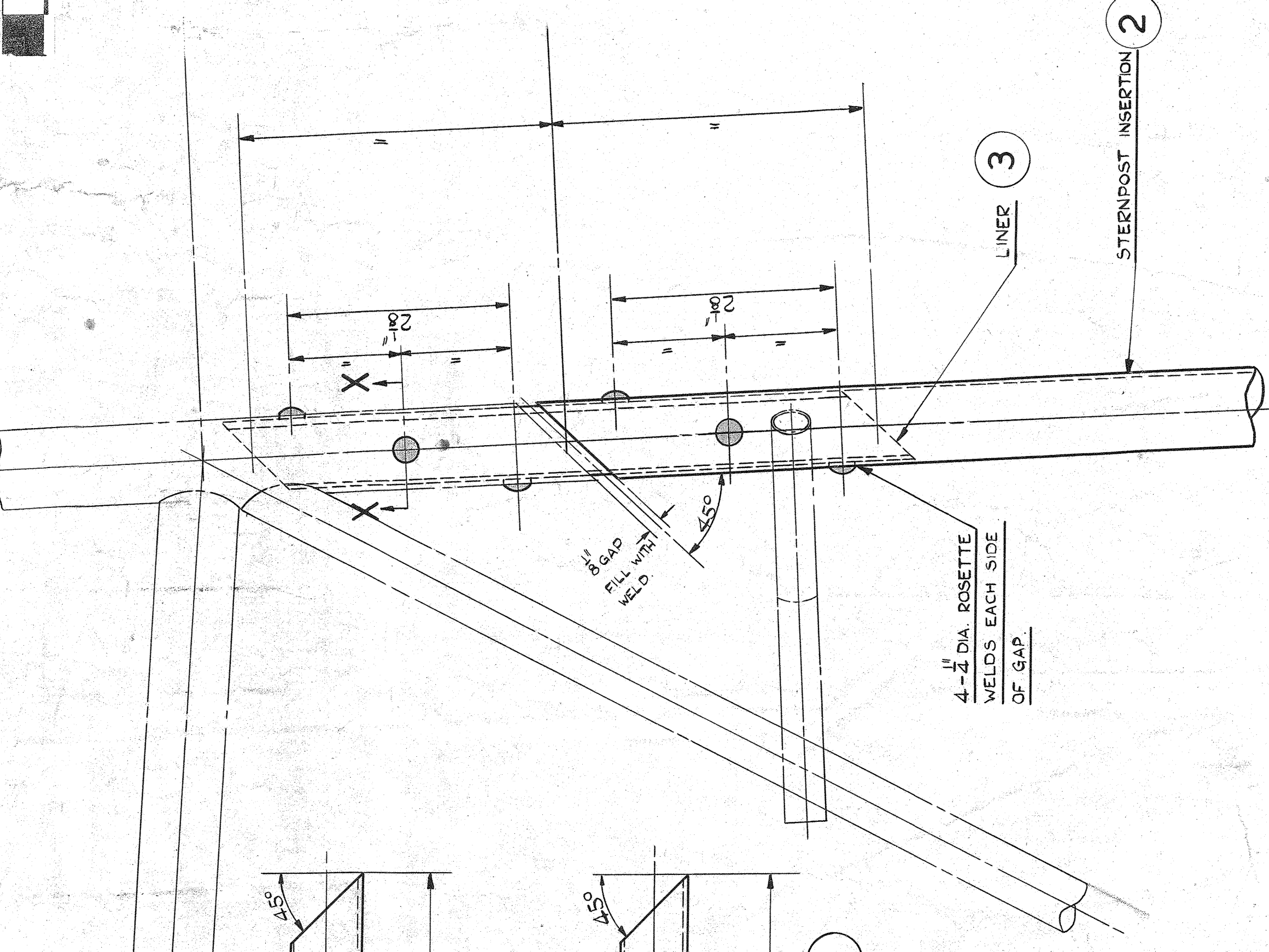
THIS PORTION OF MEMBER TO BE REPLACED (ROOT SIDE)

TOP VIEW OF BOTTOM FRAME.

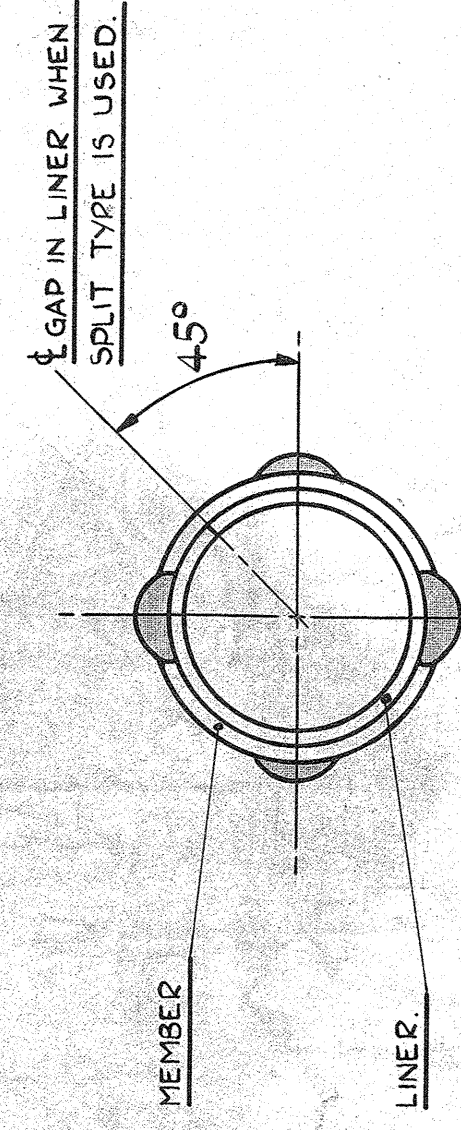
SKETCHES SHOWING REPLACEMENT MEMBERS



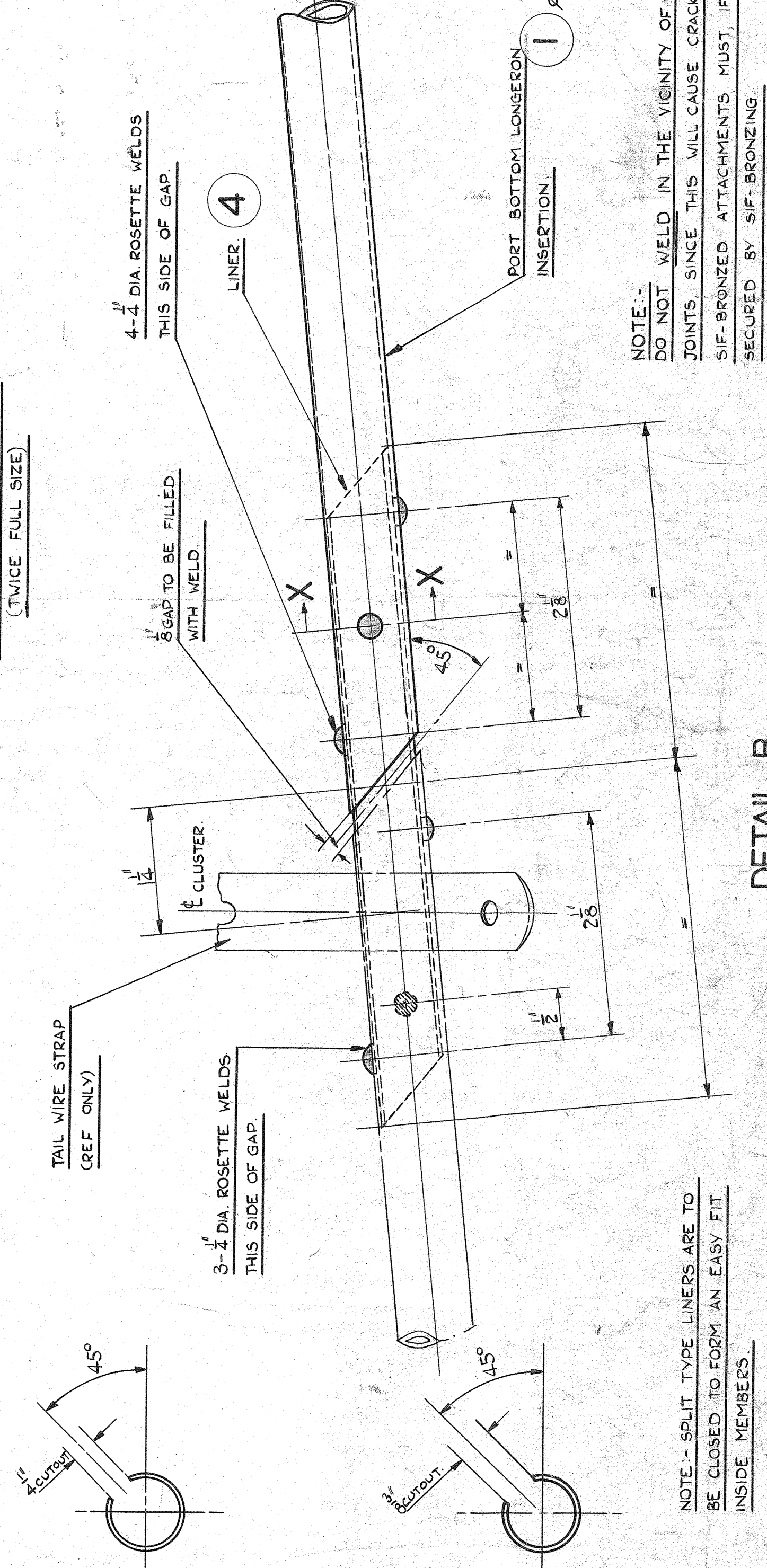
DETAIL C



DETAIL A



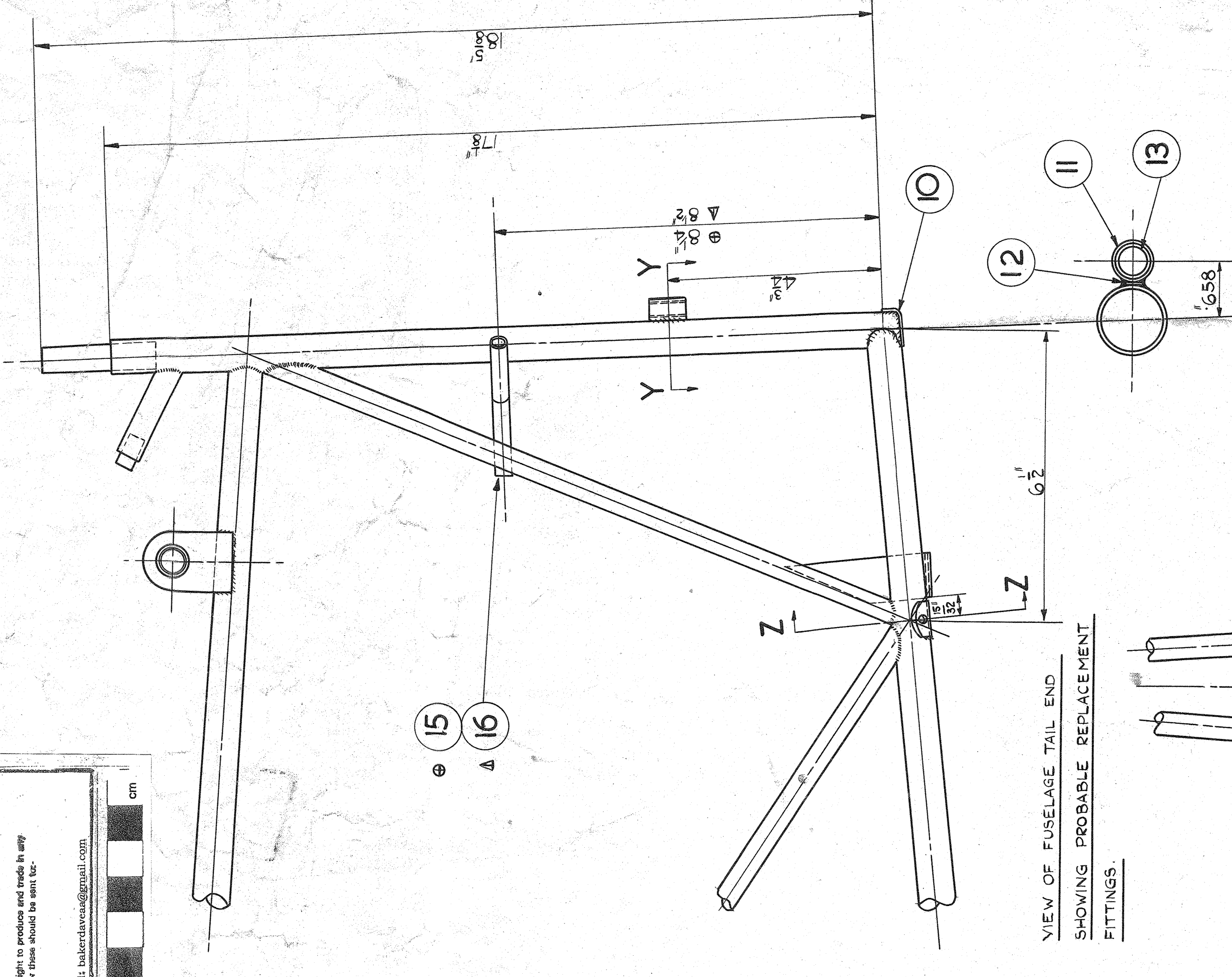
SECTION AT X-X
(TWICE FULL SIZE)



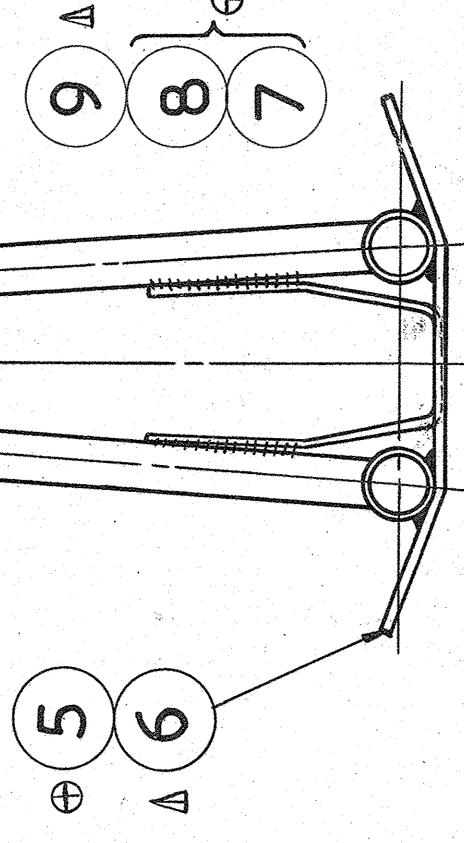
DETAIL B

NOTE: SPLIT TYPE LINERS ARE TO BE CLOSED TO FORM AN EASY FIT INSIDE MEMBERS

NOTE: DO NOT WELD IN THE VICINITY OF EXISTING SIF-BRONZED JOINTS, SINCE THIS WILL CAUSE CRACKS IN THE JOINTS. SIF-BRONZED ATTACHMENTS MUST, IF REPLACED, BE SECURED BY SIF-BRONZING



SECTION AT Y-Y



SECTION AT Z-Z

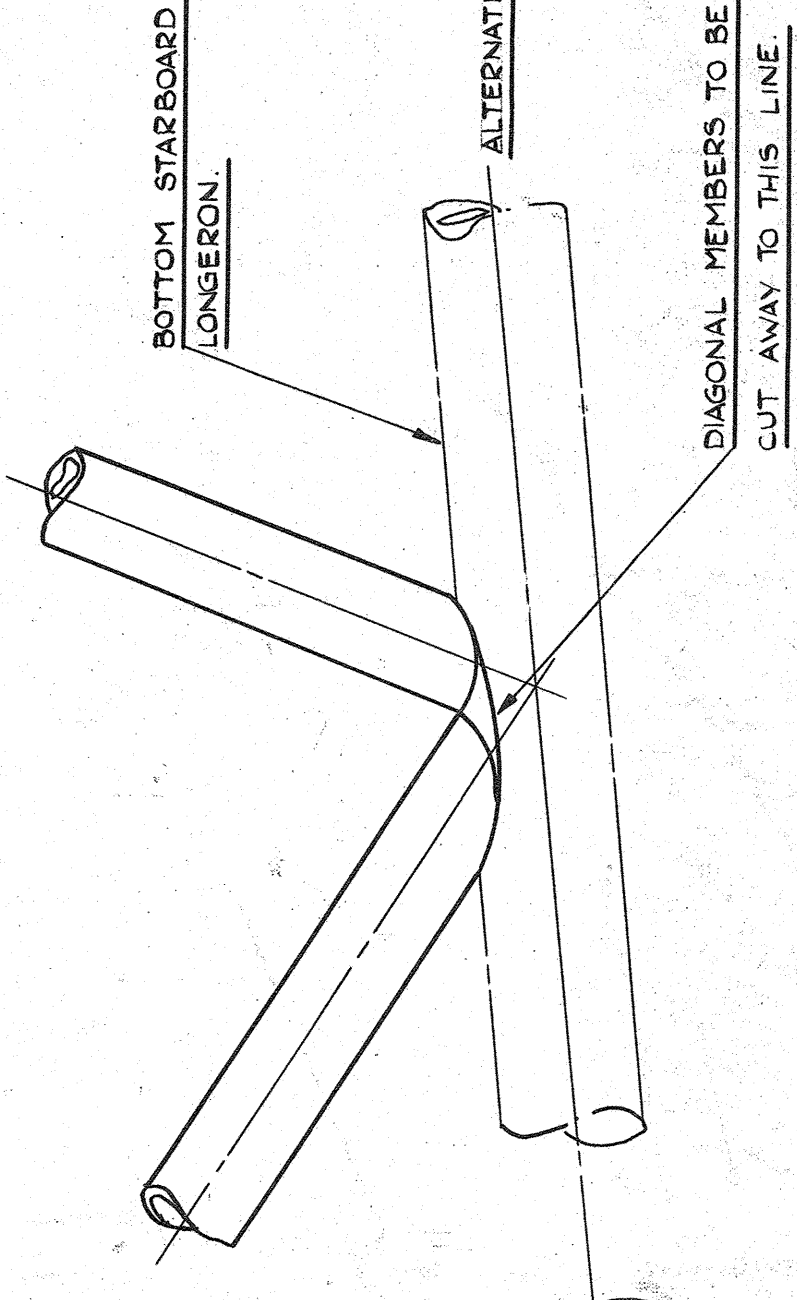
SYMBOLS

- Ø THE BOTTOM LONGERONS ON AUSTER I & AUSTER II (REF-MOD 143) ARE 20G 3/4" DIA (REF 2) SEE FIG. 1005.
- ⊗ DENOTES AUSTER I & II ONLY
- A DENOTES AUSTER III, IV, V & VI SERIES

QTY	DESCRIPTION	PART NO	REVISION	DATE	BY	CHKD	APP'D
16	RUDDER STOP ASSEMBLY	AGA 30					
15	DAIT	ADA 31					
14	RUDDER STOP ASSEMBLY	ADA 31					
13	BUUSH OILITE	ADH 98					
12	BUUSH OILITE	AGA 159					
X	PLATE	AGA 121					
11	TUBE	AGA 176					
10	TAIL SPRING UPPER SUPPORT	AGA 232					
9	TAIL SKID BOLT CLAMP	CBA 231					
8	TAIL SKID BOLT CLAMP OUTER	ADA 200					
7	TAIL SKID BOLT CLAMP INNER	ADA 201					
6	TAIL WIRE STRAP	AGA 176					
5	TAIL WIRE STRAP	AGA 156					
4	TUBE 3/4" DIA X 17G	T45					
3	TUBE 1/2" DIA X 20G	T45					
2	TUBE 1/2" DIA X 20G	T45					
1	TUBE 3/4" DIA X 17G	T45					
	DESCRIPTION	PART NO					
	TUBE 3/4" DIA X 17G	T45					
	TUBE 1/2" DIA X 20G	T45					
	TUBE 1/2" DIA X 20G	T45					
	TUBE 3/4" DIA X 17G	T45					

DETAIL D

SHOWING METHOD OF CUTTING AWAY DIAGONAL MEMBERS WITHOUT THE DIAGONALS COMING APART



PROTECTIVE TREATMENT	ABRY NP	SCALE	DATE	BY	CHKD	APP'D
		1/8" x 1/2" x 1/2"	8-48			
TAYLORCRAFT AIRPLANES (ENGLAND) LTD, LEICESTER						
TITLE: INSERTION REPAIR TO STERNPOST & BOTTOM LONGERONS						
PART NO. PART NO. DIS. NO.						
DRAWING NO. REV. NO. PART NO.						

TYPE AUSTER I & II

TYPE AUSTER I & II