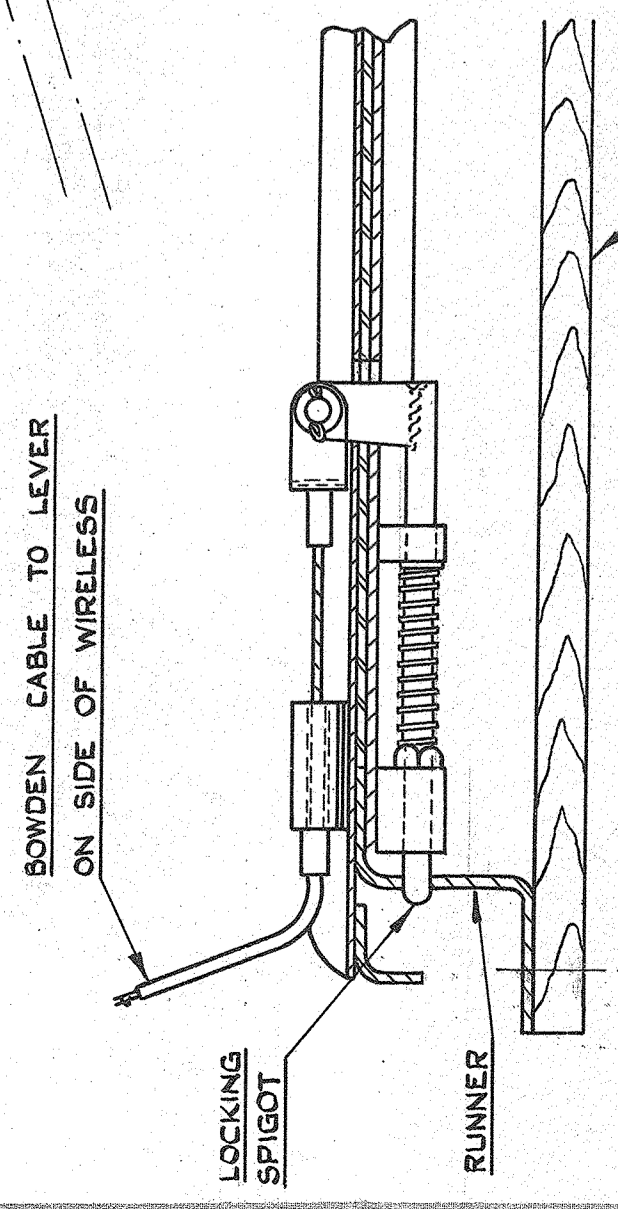
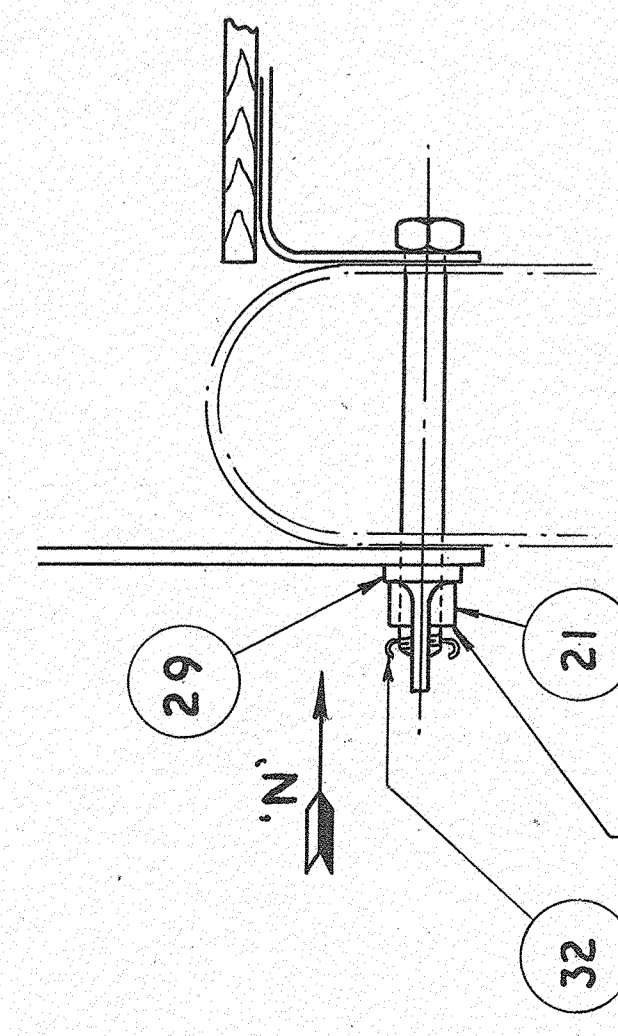


1. DO NOT SCALE DRAWINGS
2. ENGLISH PROJECTION IS UNLESS OTHERWISE STATED.
3. TOLERANCES ON DIMENSIONS ARE UNLESS OTHERWISE STATED.
4. IN CASE OF DISCREPANCY BETWEEN THIS DRAWING AND THE DRAWING OFFICE RECORD COMMENCING OPERATIONS



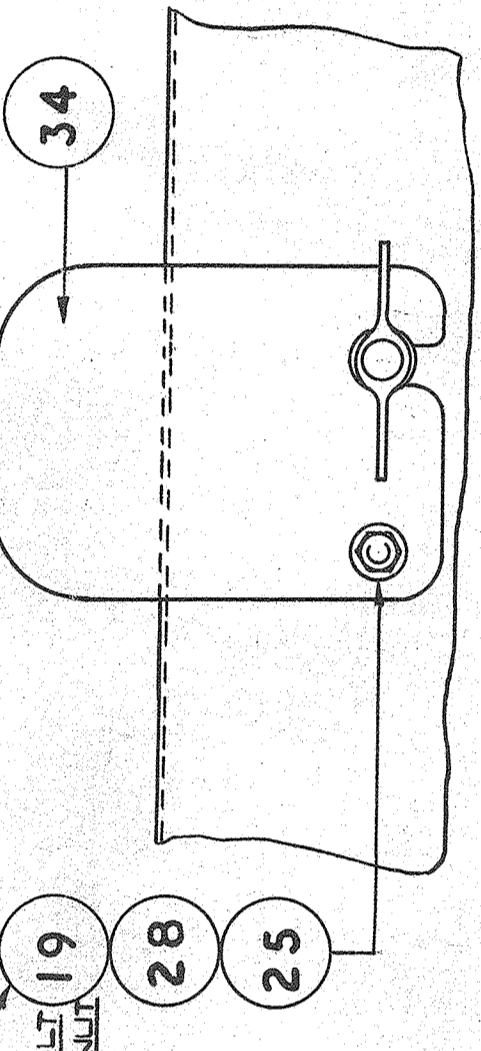
SECTION 'J-J'
SHOWING METHOD OF LOCKING WIRELESS CRADLE TO TRAY



SECTION 'M-M'
SHOWING METHOD OF STOP PLATE TO SHOCK TUBE

STOP PLATE MAY BE RELEASED & SWUNG CLEAR BY FIRST LOOSENING WING NUT

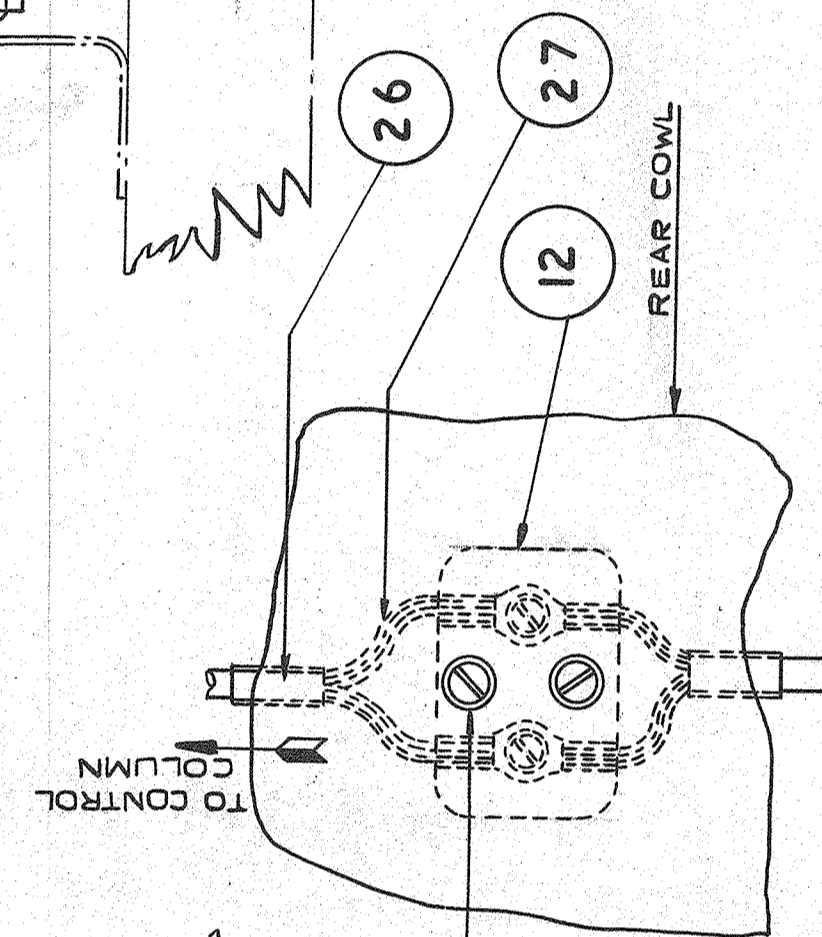
THESE FIXINGS ARE THRO' REAR FACE OF SHOCK TUBE ONLY.



VIEW IN DIRECTION OF ARROW 'N'

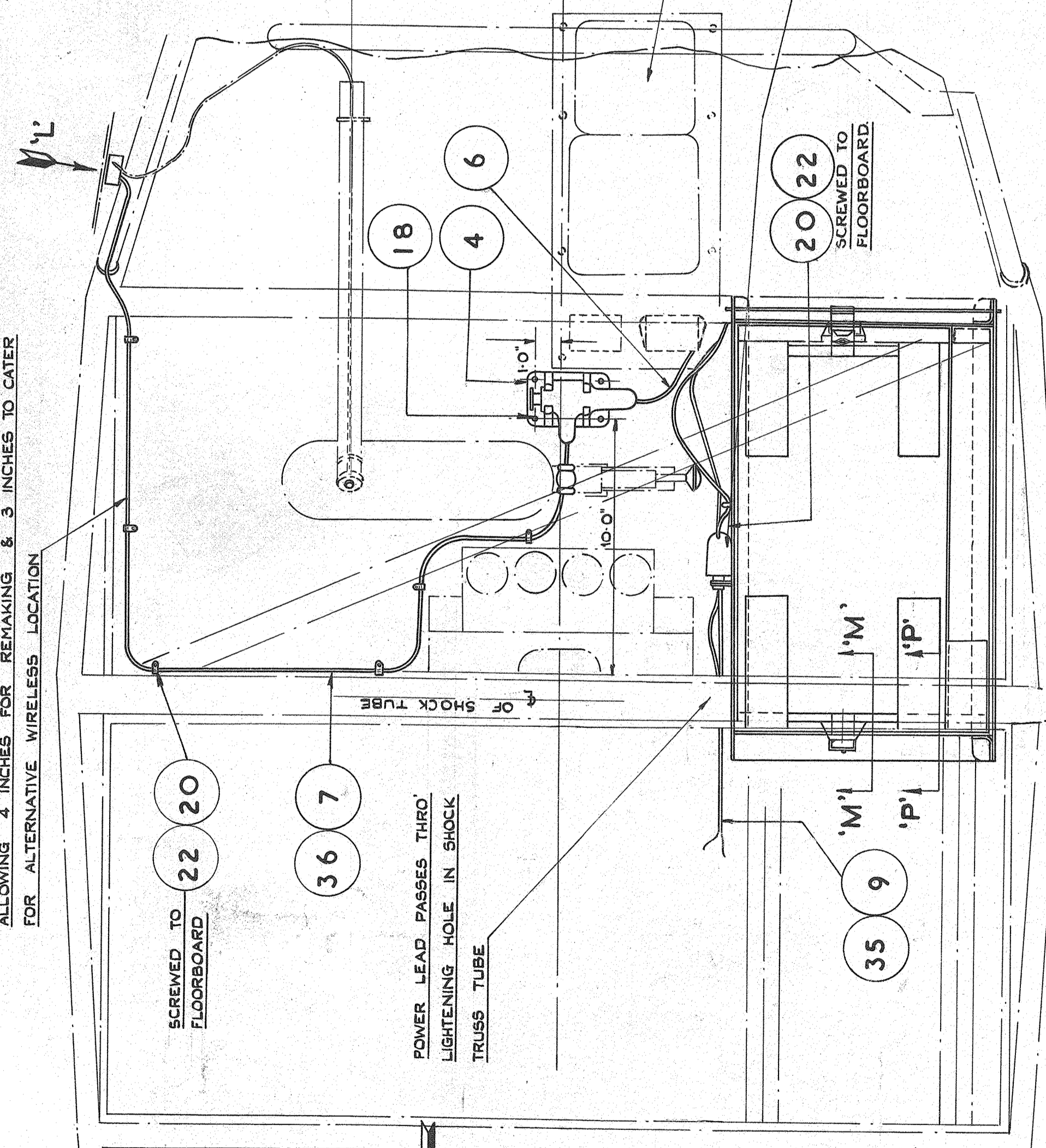
SUFFICIENT SLACK IS TO BE LEFT AT THE LOWER END OF CABLE TO ALLOW SET TO MOVE TO ITS EXTREME POSITIONS

CABLE TO BE SECURED TO TERMINAL BLOCK AFTER ENSURING THAT SUFFICIENT SLACK IS LEFT TO ALLOW FREE & FULL MOVEMENT OF CONTROLS. CABLE TO BE CLIPPED TO CONTROL COLUMN & YOKE MEMBER AT SUITABLE POINTS WITH ITEM II.



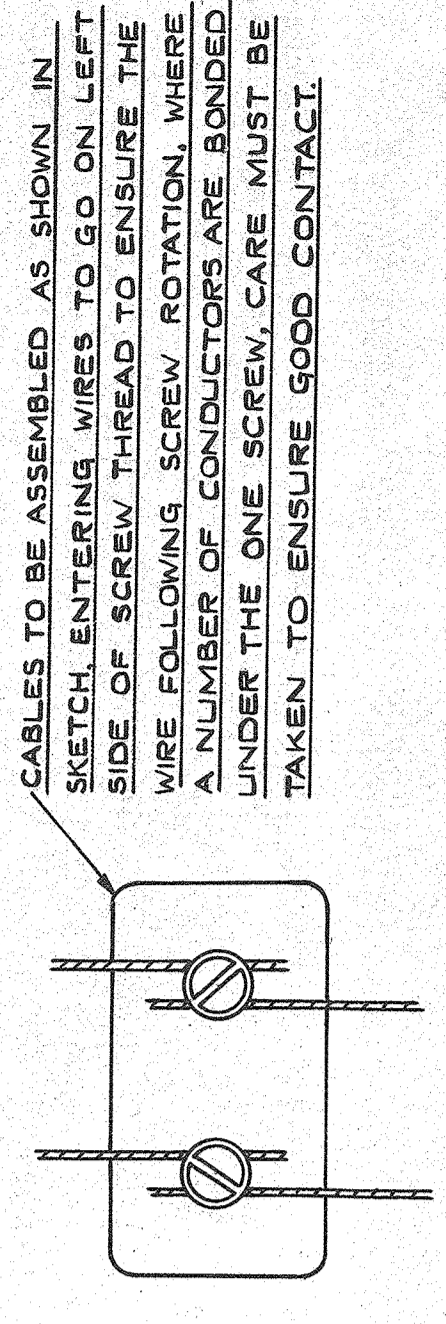
VIEW ON ARROW 'L'
SHOWING MOUNTING OF TB8 INSIDE REAR COWL ON PORT SIDE

THIS CABLE TO BE CUT TO CORRECT LENGTH ON ASSEMBLY ALLOWING 4 INCHES FOR REPAIRING & 3 INCHES TO CLEAR FOR ALTERNATIVE WIRELESS LOCATION

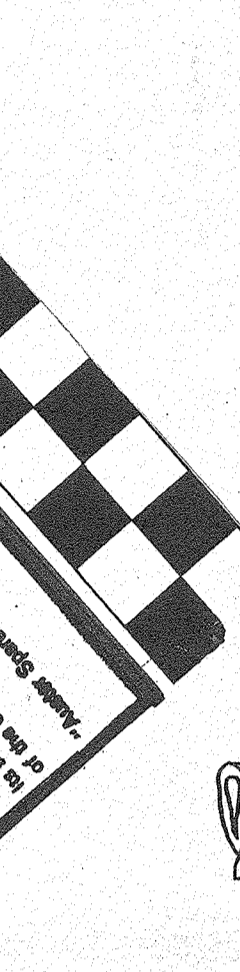


VIEW IN DIRECTION OF ARROW 'E'

DETAIL OF CABLE ATTACHMENT AT TERMINAL BLOCKS

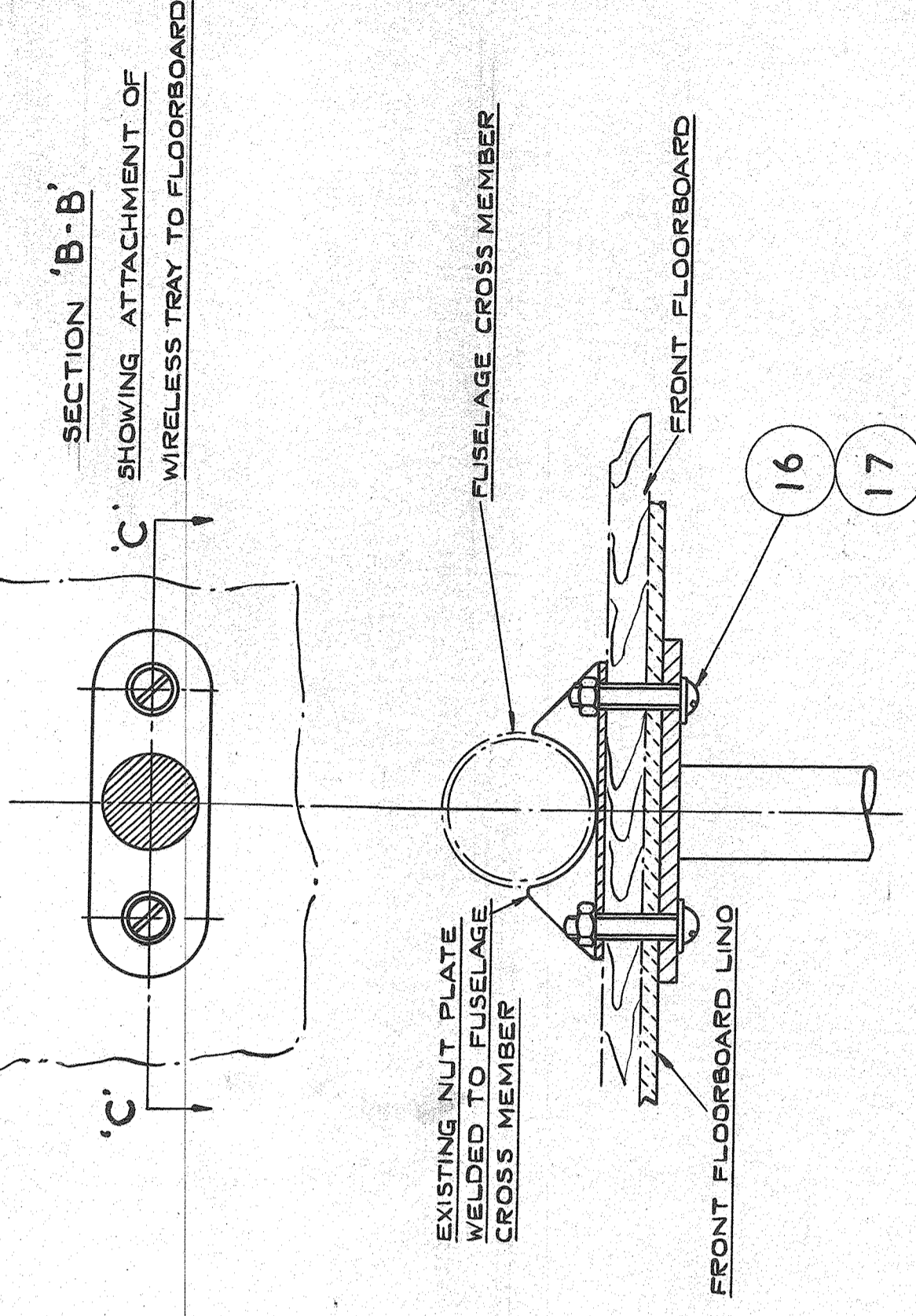


DETAIL OF CABLE ATTACHMENT AT TERMINAL BLOCKS



SECTION P-P
SHOWING ATTACHMENT OF TRAY TO SHOCK TUBE

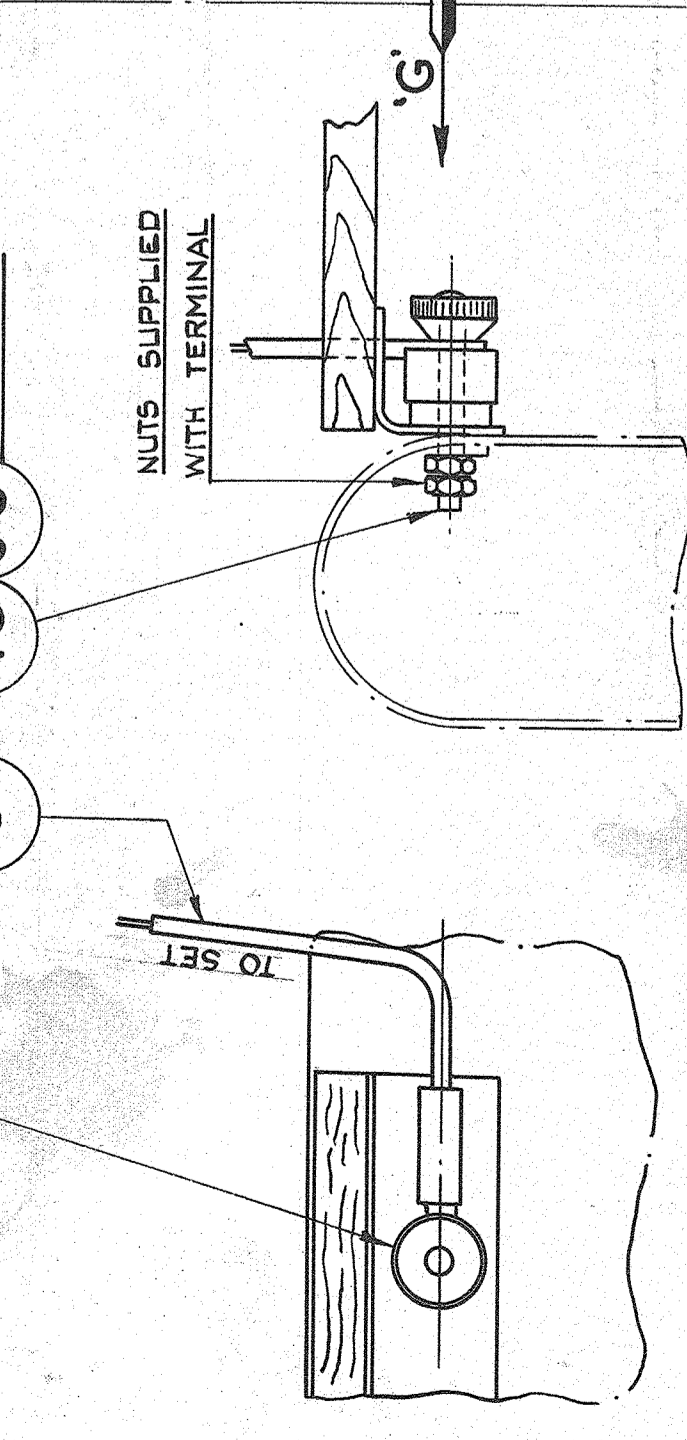
VIEW IN DIRECTION OF ARROW 'A'
SHOWING METHOD OF ATTACHING ROLLERS ON WIRELESS CRADLE TO RUNNERS ON FLOORBOARD



SECTION 'C-C'
SHOWING ATTACHMENT OF WIRELESS TRAY TO FLOORBOARD

- METHOD OF ASSEMBLING CRADLE TO TRAY
1. MAKE SURE THE LEVER ON SIDE OF CRATE IS PUSHED RIGHT DOWN.
 2. LOCATE REAR END OF CRADLE IN RUNNER ON REAR FLOORBOARD AS SHOWN IN VIEW ON ARROW 'A'
 3. MOVE CRADLE FORWARD UNTIL THE RUNNERS ON THE WIRELESS TRAY ENGAGE THE SLOTS IN THE CRADLE AS SHOWN AT SECTION 'J-J'
 4. IT WILL NOW BE POSSIBLE TO MOVE CRADLE TO DESIRED POSITION
 5. CRADLE CAN THEN BE LOCKED BY PULLING UP THE LEVER ON SIDE OF THE CRADLE & SLIDING CRADLE SLIGHTLY BACKWARDS & FORWARDS UNTIL THE LOCKING SPIGOT ENGAGES IN THE NEAREST LOCKING HOLE TO THE DESIRED POSITION
- NOTE:- IT WILL BE NECESSARY TO GREASE RUNNERS BEFORE ASSEMBLY.

VIEW IN DIRECTION OF ARROW 'G'



DETAIL 'F'
SHOWING ATTACHMENT OF EARTHING LEAD FROM SET TO SHOCK TRUSS

ITEM NO	DESCRIPTION	QTY	REMARKS
38	160/C WASHER	1	
37	A1/2C BOLT	1	
36	K7721 STYTOFLEX 10 1/4 DIA.	36' LONG	
35	K7722 STYTOFLEX 10 1/4 DIA.	26' LONG	
34	K71343 STOP PLATE	AKK 51	
33	CP/1	ODDIE NUT	
32	LOCKING WIRE 20 G.	AS REQD	
31	A1/3A BOLT	1	
30	160/C SPRING WASHER	1	
29	K7258 BUSH	AKK 93	
28	N11 HELLEMAN SLEEVE	4	
27	N12 HELLEMAN SLEEVE	2	
26	A/1 ODDIE NUT	3	
25	A/1 ODDIE NUT	2	
24	A/1 ODDIE NUT	2	
23	A/1 ODDIE NUT	2	
22	A/1 ODDIE NUT	2	
21	A/1 ODDIE NUT	2	
20	A/1 ODDIE NUT	2	
19	A/1 ODDIE NUT	2	
18	A/1 ODDIE NUT	2	
17	A/1 ODDIE NUT	2	
16	A/1 ODDIE NUT	2	
15	A/1 ODDIE NUT	2	
14	A/1 ODDIE NUT	2	
13	A/1 ODDIE NUT	2	
12	A/1 ODDIE NUT	2	
11	A/1 ODDIE NUT	2	
10	A/1 ODDIE NUT	2	
9	A/1 ODDIE NUT	2	
8	A/1 ODDIE NUT	2	
7	A/1 ODDIE NUT	2	
6	A/1 ODDIE NUT	2	
5	A/1 ODDIE NUT	2	
4	A/1 ODDIE NUT	2	
3	A/1 ODDIE NUT	2	
2	A/1 ODDIE NUT	2	
1	A/1 ODDIE NUT	2	

PROTECTIVE TREATMENT	REF. ON	SCALE	DATE	BY	CHKD	APP'D	DESCRIPTION
	AKK 480	1/4, 1/2 & 1					REVISIONS
							NO. 1
							NO. 2
							NO. 3
							NO. 4
							NO. 5
							NO. 6
							NO. 7
							NO. 8
							NO. 9
							NO. 10
							NO. 11
							NO. 12
							NO. 13
							NO. 14
							NO. 15
							NO. 16
							NO. 17
							NO. 18
							NO. 19
							NO. 20
							NO. 21
							NO. 22
							NO. 23
							NO. 24
							NO. 25
							NO. 26
							NO. 27
							NO. 28
							NO. 29
							NO. 30
							NO. 31
							NO. 32
							NO. 33
							NO. 34
							NO. 35
							NO. 36
							NO. 37
							NO. 38
							NO. 39
							NO. 40
							NO. 41
							NO. 42
							NO. 43
							NO. 44
							NO. 45
							NO. 46
							NO. 47
							NO. 48
							NO. 49
							NO. 50
							NO. 51
							NO. 52
							NO. 53
							NO. 54
							NO. 55
							NO. 56
							NO. 57
							NO. 58
							NO. 59
							NO. 60
							NO. 61
							NO. 62
							NO. 63
							NO. 64
							NO. 65
							NO. 66
							NO. 67
							NO. 68
							NO. 69
							NO. 70