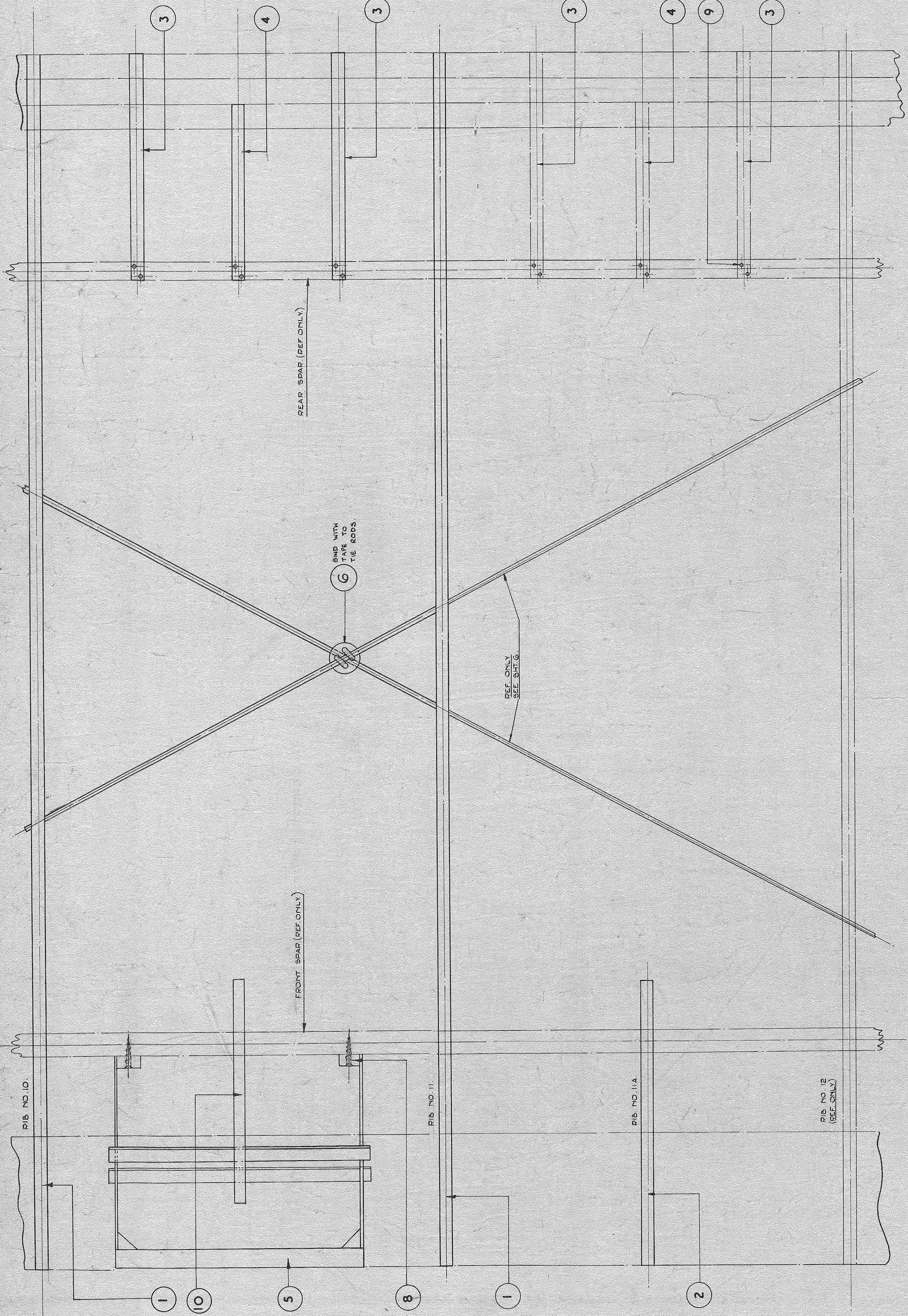
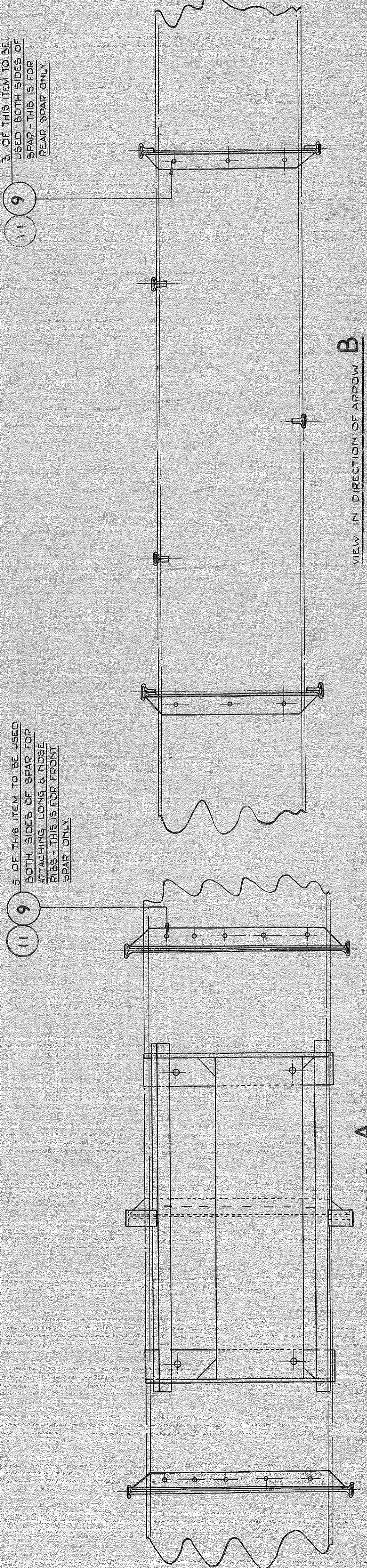


A



B



119 3. OF THIS ITEM TO BE USED BOTH SIDES OF SPAR FOR REAR SPAR ONLY.

119 3. OF THIS ITEM TO BE USED BOTH SIDES OF SPAR FOR REAR SPAR ONLY.

NOTE: FOR FINISHES OF RIBS ETC. TO LEADING EDGE & GAP SHROUDS SEE SHIT L.

* ITEM 11 IS AN ALTERNATIVE TO ITEM 2.

3	42	3637	
7	36	3305	
6	303	2035	
4	264	1668	
3	247	1481	
1	155	1319	4B ANT

View 9 numbered parts 10 to 112
 ANT
 AUSTER

ITEM NO.	DESCRIPTION	QTY	UNIT	REMARKS
11	NAILS 1/8x 7/8 LOCKER		STEEL	AS REQD
10	FABRIC SUPPORT BACK		CUM. 22	1" P.H.
9	1/8 x 1/8 RESIN COATED NAILS		BRASS	AS REQD
8	WOODSCREW			4" P.H.
7	FIBRE PATCH (FOR THE RIBS)		AKH253	1" P.H.
6	REINFORCEMENTS TO LEADING EDGE		DEH 50	1" P.H.
5	RIBLET BOTTOM		AEH 105	2" P.H.
4	RIBLET TOP		AEH 102	4" P.H.
3	NOSE RIB ASSY		CDH 21	1" P.H.
2	RIB ASSY		CDH 20	2" P.H.

PROJECTING	ANT	SEE SHIT L		
SCALE	1:2			
DESIGNER	JGTYLER			
CHECKED	HAC			
APPROVED	F.L.C.			
PART NO.	KA 80049			
DRAWING NO.	KA 80049			
TITLE	WING FRAME ASSY. (BAY 4)			