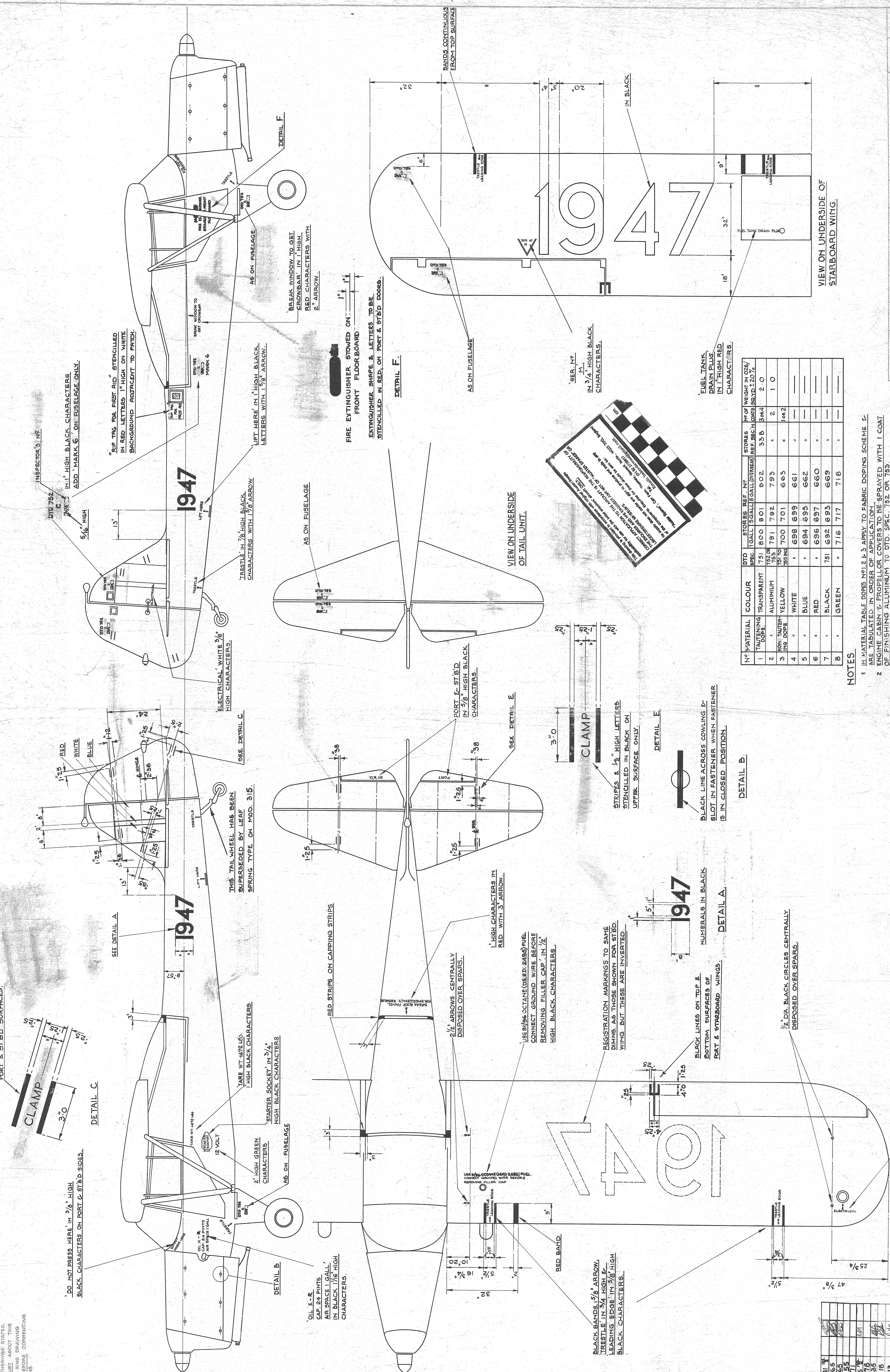


1. DO NOT SCALE DRAWING.
 2. BRUSH PROJECTION IS STATED, UNLESS OTHERWISE STATED.
 3. TOLERANCES ON DIMENSIONS ARE UNLESS OTHERWISE STATED.
 4. IF IN DOUBT ABOUT THIS DRAWING, AND DRAWING OPERATIONS, CONSULT THE OFFICE BEFORE COMMENCING OPERATIONS.



NO	MATERIAL	COLOUR	QTY	STENCIL	REF. NO.	STENCIL	STENCIL	NO OF WEIGHT IN OZS.
1	2	3	4	5	6	7	8	9
1	TANNING DOSE	TRANSPARENT	751	800	801	802	803	2.0
2	ALUMINIUM	753	791	792	793	794	795	1.0
3	ZINC DOSE	YELLOW	700	701	665	666	667	1.0
4	WHITE	698	699	661	662	663	664	1.0
5	BLUE	694	695	662	663	664	665	1.0
6	RED	696	697	660	661	662	663	1.0
7	BLACK	751	692	693	669	670	671	1.0
8	GREEN	716	717	718	719	720	721	1.0

- NOTES:**
- IN MATERIAL TABLE DOPES NO. 1, 2 & 3, APPLY TO FABRIC DOPING SCHEME & ARE TABULATED IN ORDER OF APPLICATION.
 - ENGINE CABIN & PROPELLOR COVERS TO BE SPRAYED WITH 1 COAT OF FINISHING ALUMINUM TO DTD. SPEC. 752 OR 753.
 - ALL METAL PARTS ON EXTERIOR OF AIRCRAFT TO HAVE PROTECTIVE TREATMENT CALLED FOR ON E.K. 4 PLUS 2 COATS OF NO. 3 IN TABLE SPRAYED ON.
 - FOR DETAILS OF STENCILING ON DOORS SEE DRG. NO. EKA. 301/L/R.

PROTECTIVE TREATMENT: **NO. 3**

APPROVED BY: **E.K. 29**

SCALE: **1/16**

AUSTER AIRCRAFT LTD. REARSBY, LEICESTER.

TITLE: **DOPING & STENCILING SCHEME (CANADIAN AUSTRAL)**

PART NO: **KL 0120**

REV: **1**

DATE: **1947**

DRG. NO. **E.K. 28**

REV.	DATE	BY	CHKD.	INT.	APP.	REASON
1	1947					
2	1947					
3	1947					
4	1947					
5	1947					
6	1947					
7	1947					
8	1947					
9	1947					
10	1947					