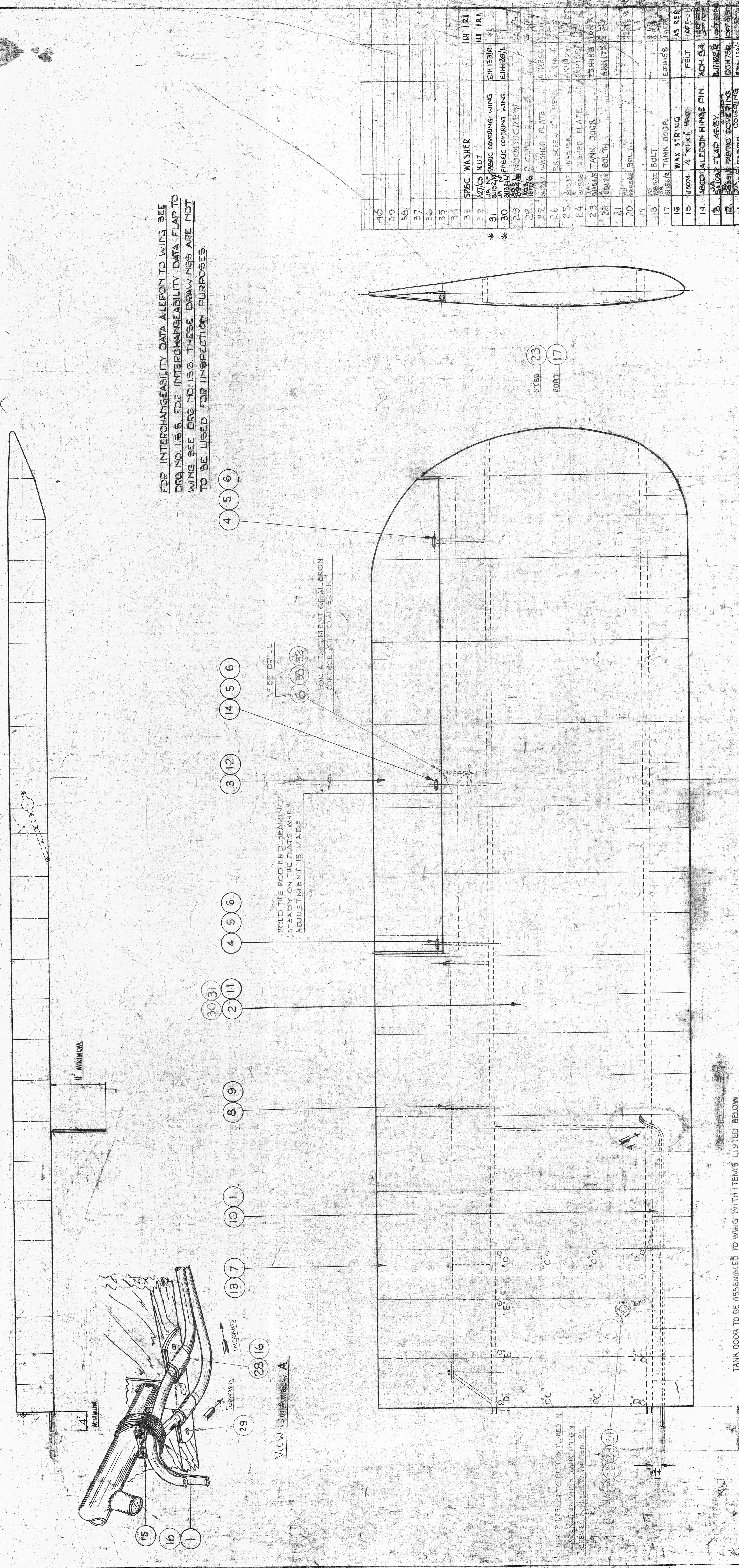


DO NOT SCALE DRAWING
DIMENSIONS ARE AS SHOWN
TOLERANCES ON DIMENSIONS ARE AS STATED
UNLESS OTHERWISE STATED
DRAWING RING DRAWING
OFFICE BEFORE COMMENCING
OPERATIONS.



FOR INTERCHANGEABILITY DATA AILERON TO WING SEE
DRG. NO. 13.5. FOR INTERCHANGEABILITY DATA FLAP TO
WING SEE DRG. NO. 13.6. THESE DRAWINGS ARE NOT
TO BE USED FOR INSPECTION PURPOSES.

HOLD THE ROD END READINGS
STEADY ON THE PLATS WHEN
ADJUSTMENT IS MADE

FOR ATTACHMENT OF AILERON
CONTROL ROD TO AILERON

STBD (23)
PORT (17)

NOTE:
FOR INSTALLATION OF WIND DRIVEN GENERATOR SEE DRG. FJK 465
FOR ELECTRICAL CIRCUIT SEE DRG. ETK 261 SHEET 2, PT. NO. 0123484

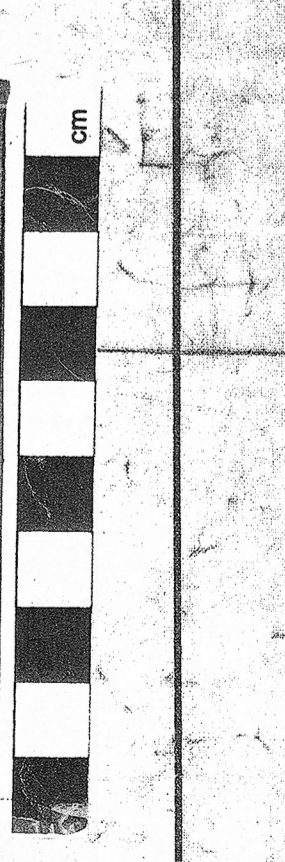
TANK DOOR TO BE ASSEMBLED TO WING WITH ITEM'S LISTED BELOW
AT POSITIONS MARKED "C" ITEM 18
AT POSITIONS MARKED "D" ITEM 20
AT POSITIONS MARKED "E" ITEM 22

ITEMS 24, 25, 27 TO BE POSITIONED IN
CONTINUATION WITH TANK & THEN
SCREWED IN PLACE WITH ITEM 26

REV.	DATE	DESCRIPTION
1		
2		
3		
4		
5		
6		
7		
8		
9		
10		
11		
12		
13		
14		
15		
16		
17		
18		
19		
20		
21		
22		
23		
24		
25		
26		
27		
28		
29		
30		
31		
32		

ITEM NO.	DESCRIPTION	QTY	UNIT	REF. DRG.
1	1/4" DIA. WASHER	1	EA	111 IRH
2	1/4" DIA. NUT	1	EA	111 IRH
3	1/4" DIA. WASHER	1	EA	111 IRH
4	1/4" DIA. NUT	1	EA	111 IRH
5	1/4" DIA. WASHER	1	EA	111 IRH
6	1/4" DIA. NUT	1	EA	111 IRH
7	1/4" DIA. WASHER	1	EA	111 IRH
8	1/4" DIA. NUT	1	EA	111 IRH
9	1/4" DIA. WASHER	1	EA	111 IRH
10	1/4" DIA. NUT	1	EA	111 IRH
11	1/4" DIA. WASHER	1	EA	111 IRH
12	1/4" DIA. NUT	1	EA	111 IRH
13	1/4" DIA. WASHER	1	EA	111 IRH
14	1/4" DIA. NUT	1	EA	111 IRH
15	1/4" DIA. WASHER	1	EA	111 IRH
16	1/4" DIA. NUT	1	EA	111 IRH
17	1/4" DIA. WASHER	1	EA	111 IRH
18	1/4" DIA. NUT	1	EA	111 IRH
19	1/4" DIA. WASHER	1	EA	111 IRH
20	1/4" DIA. NUT	1	EA	111 IRH
21	1/4" DIA. WASHER	1	EA	111 IRH
22	1/4" DIA. NUT	1	EA	111 IRH
23	1/4" DIA. WASHER	1	EA	111 IRH
24	1/4" DIA. NUT	1	EA	111 IRH
25	1/4" DIA. WASHER	1	EA	111 IRH
26	1/4" DIA. NUT	1	EA	111 IRH
27	1/4" DIA. WASHER	1	EA	111 IRH
28	1/4" DIA. NUT	1	EA	111 IRH
29	1/4" DIA. WASHER	1	EA	111 IRH
30	1/4" DIA. NUT	1	EA	111 IRH
31	1/4" DIA. WASHER	1	EA	111 IRH
32	1/4" DIA. NUT	1	EA	111 IRH

This drawing is provided in accordance with original design/usage
responsibility for use when the final requirement is met ONLY.
CONTRACT APPROXIMATION TO THE AIRCRAFT IS THE RESPONSIBILITY OF
THE USER. THIS DRAWING IS NOT TO BE USED FOR REPRODUCTION OR
UNDERSTANDING IN REPAIRS.
No responsibility is assumed for errors in production and made by any
of the components. Enquiries for these should be sent to:
"Aviation Systems", Civil Team, Thomas, Hales & Co., 1003 20th, England
Tel: 01273 777897
Email: thomas.hales@thomas-hales.com



Issue No. 1
Mod No. 1
Date: 1/1/1975
Type: CIVIL AIRCRAFT
Part No. JA 8133 1/2