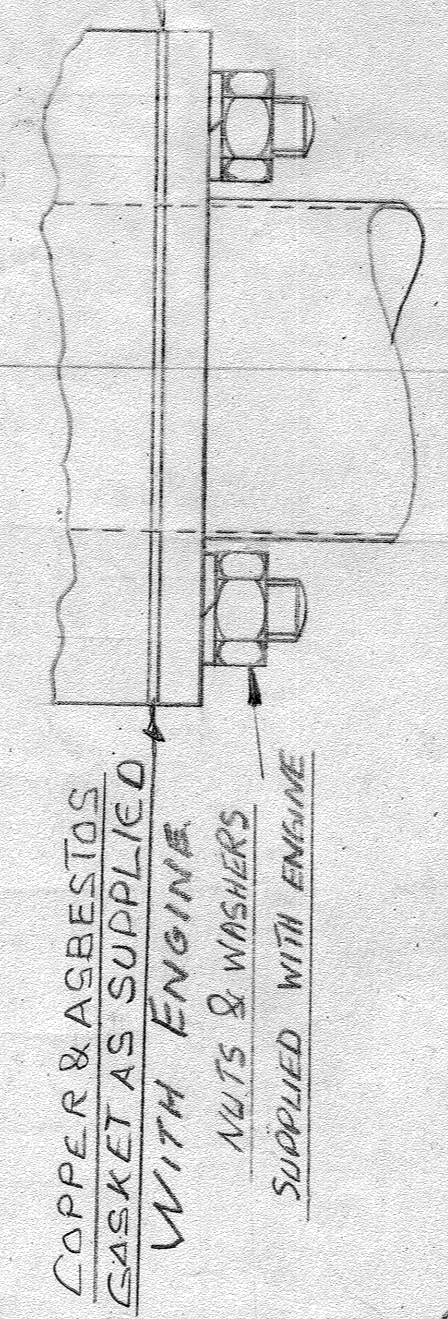
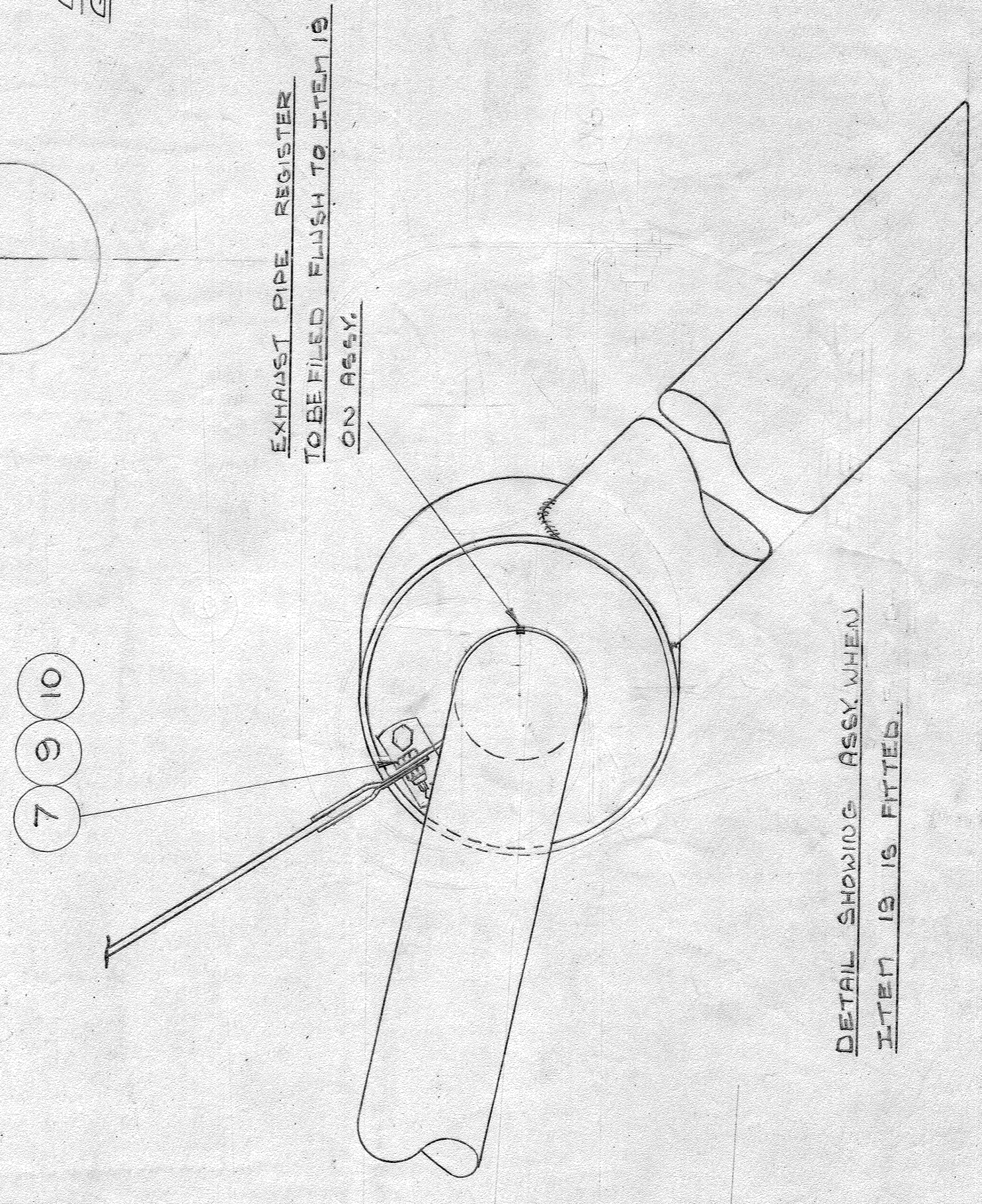
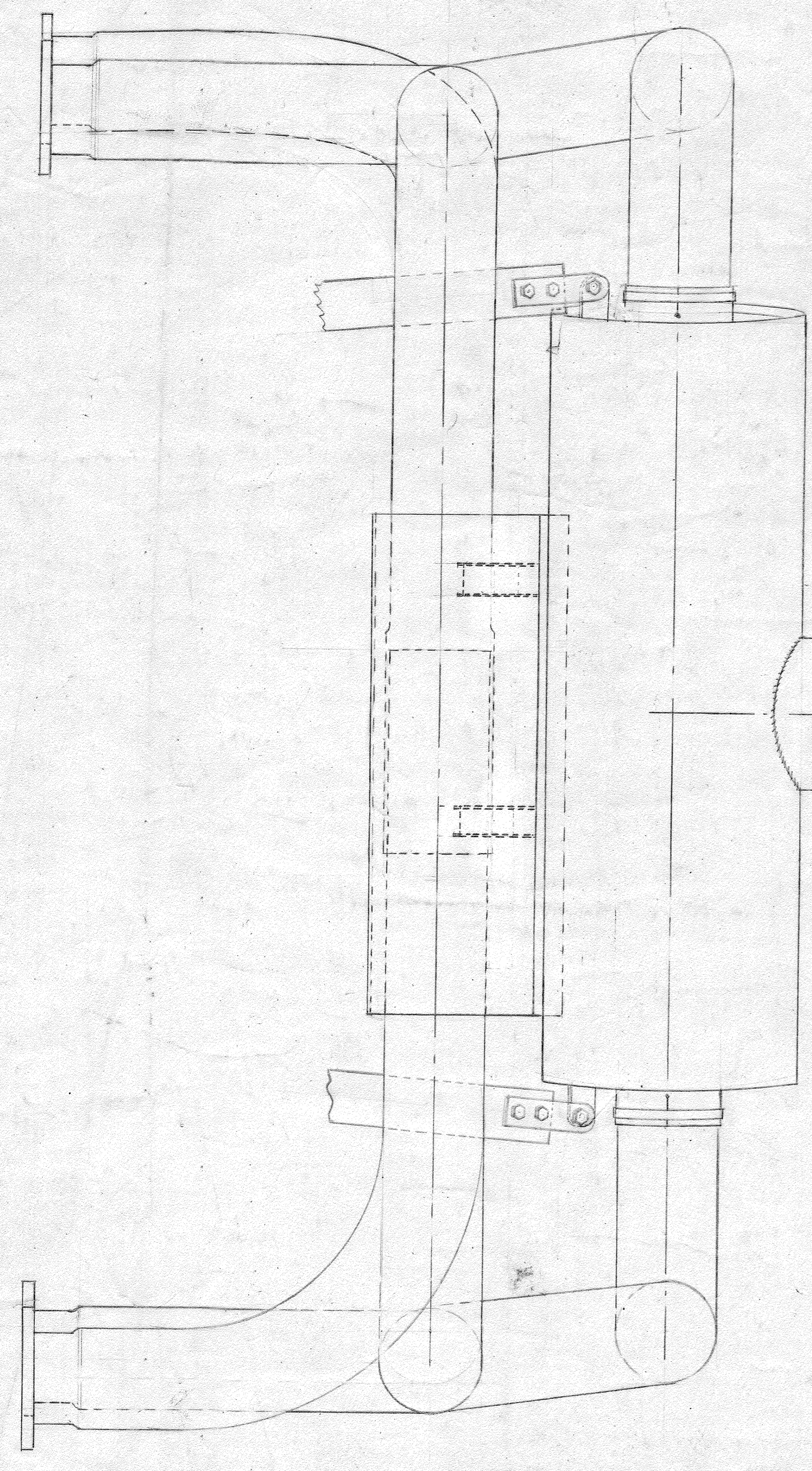
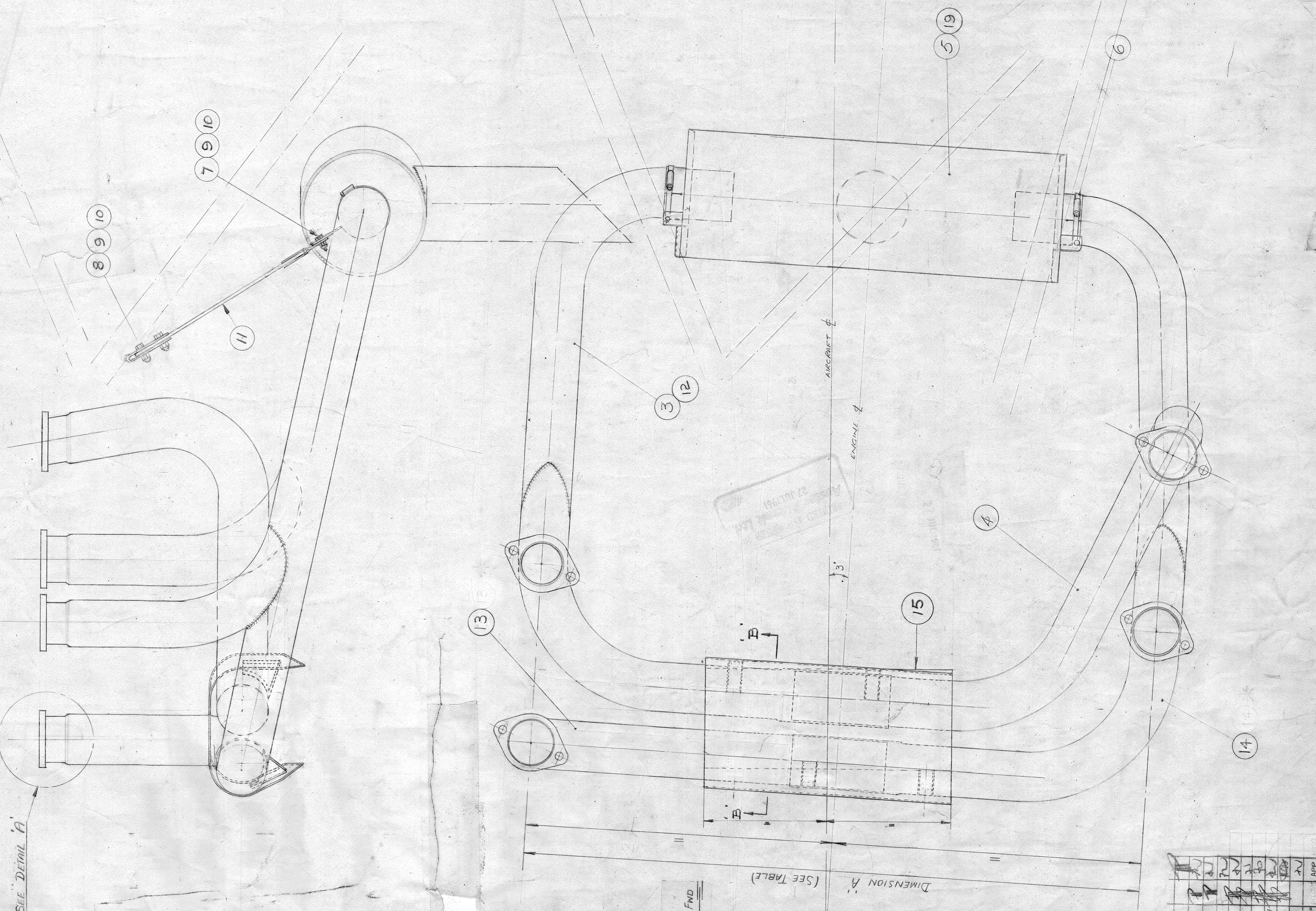


ENGINE THROUST LINE



DETAIL 'A' SHOWING ATTACHMENT TO ENGINE
TYPICAL FOR ALL FLANGES

PART NO.	COMPRISING ITEMS
JL 62344	3 TO 11, 13 TO 18
JL 62704	4, 7 TO 9

DIMENSION 'A'	LYCONE ENGINE NO.
24.75"	0-235
25.04"	0-320
26.16"	0-360

ITEM NO.	DESCRIPTION	QUANTITY	UNIT
19	EXHAUST SILENCER	1	EJF 117
18	SPACER WASHER	2	EA
17			
16			
15	EXHAUST PIPE	1	EJF 1025
14	EXHAUST PIPE	1	EJF 1025
13	EXHAUST PIPE	1	EJF 1025
12	EXHAUST PIPE	1	EJF 1025
11	SUPPORT STAMP	1	EJF 1025
10	STIFF NUT	10	EA
9	SPACER WASHER	10	EA
8	BOLT	4	EA
7	BOLT	6	EA
6	UNIFLEX CLIP	2	EA
5	SILENCER	1	EJF 1025
4	EXHAUST PIPE	1	EJF 1025
3	EXHAUST PIPE	1	EJF 1025
2			

SECTION B-B

REV.	DATE	BY	CHKD.	APP.
M	4217			
L	4133			
K	4003			
J	3855			
I	3814			
H	3727			
G	3687			
F	3687			
E	3612			
D	3612			
C	3612			
B	3612			
A	3612			

PROTECTIVE TREATMENT: NONE

SCALE: 1/2" = 1"

AUSTER AIRCRAFT LTD. REARSBY, LEICESTER

TITLE: GA EXHAUST SYSTEM

ORIGIN: EJP 950