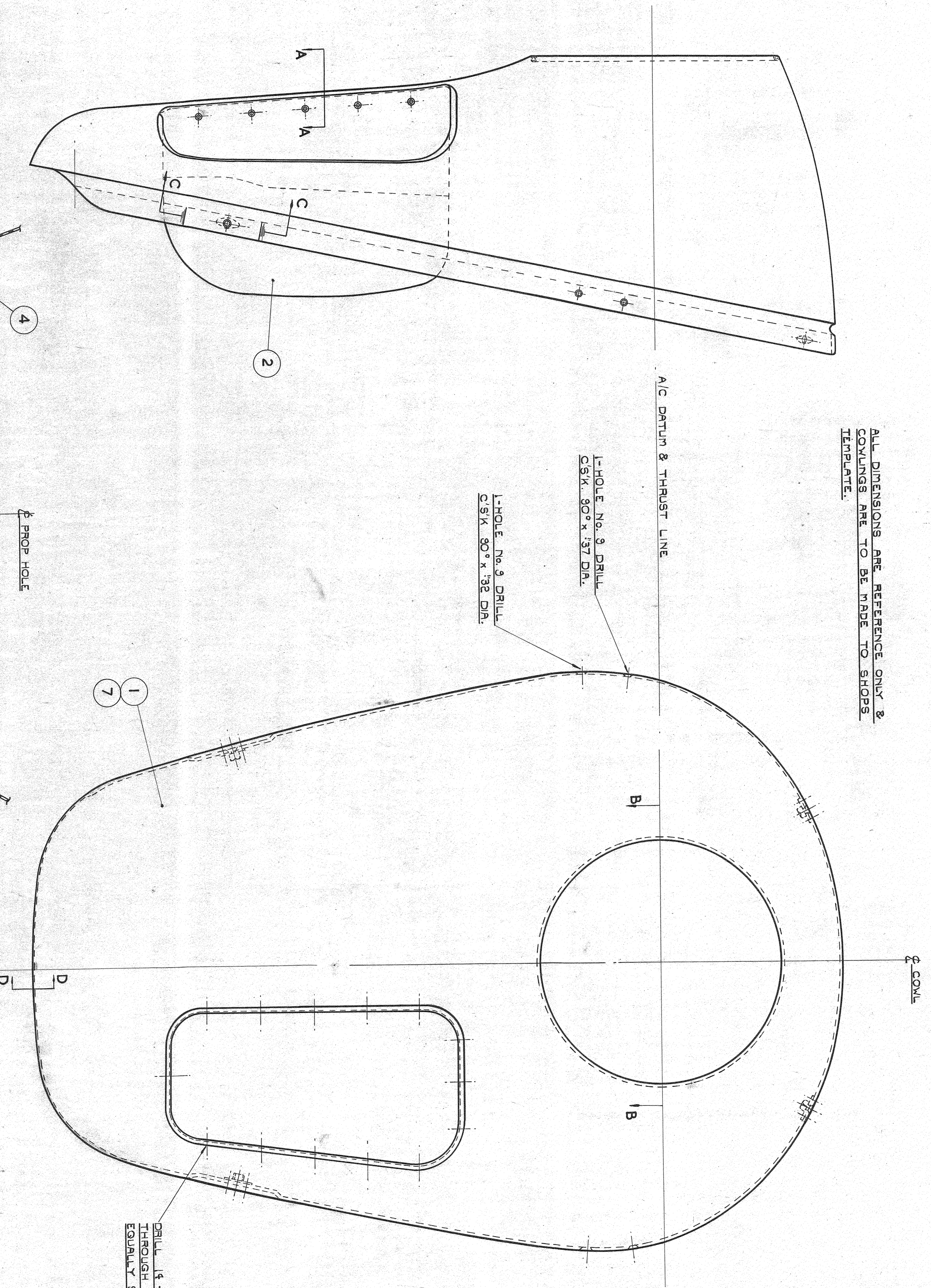
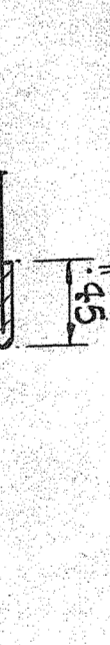
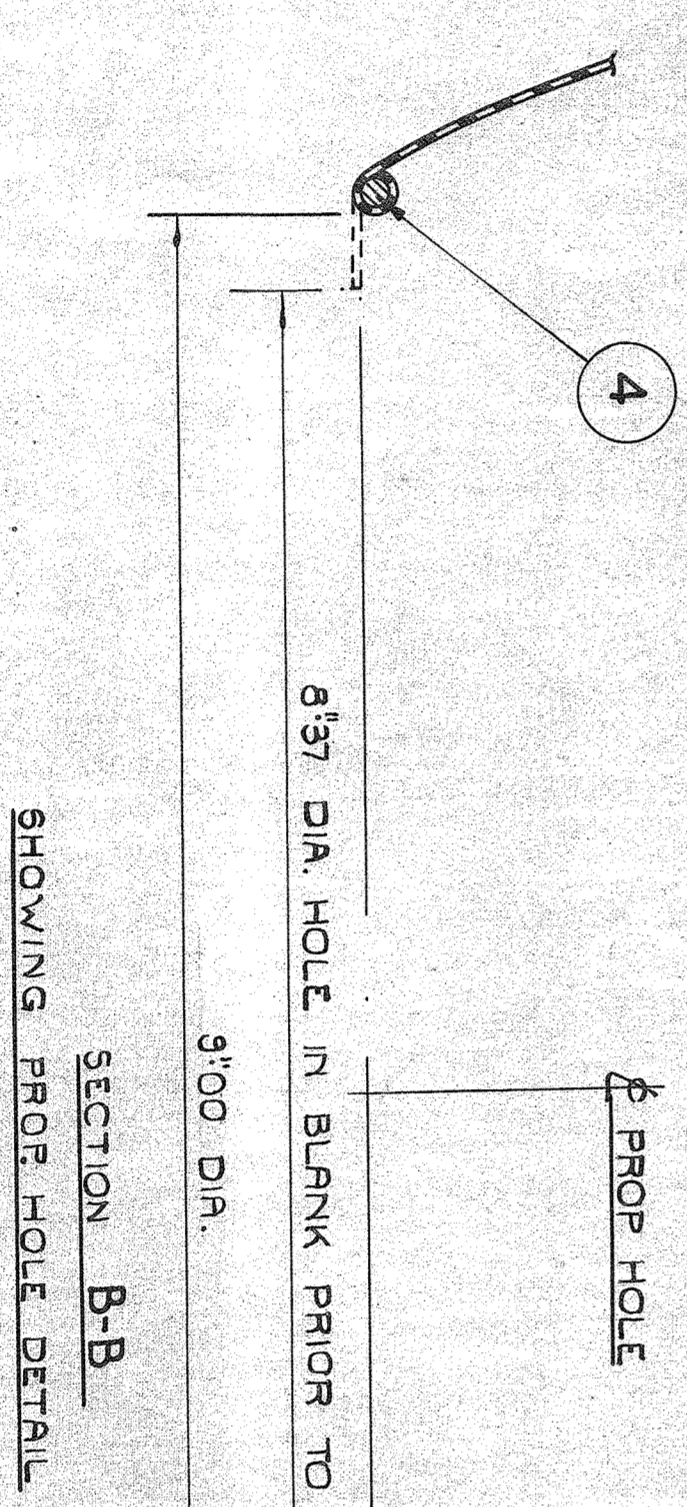
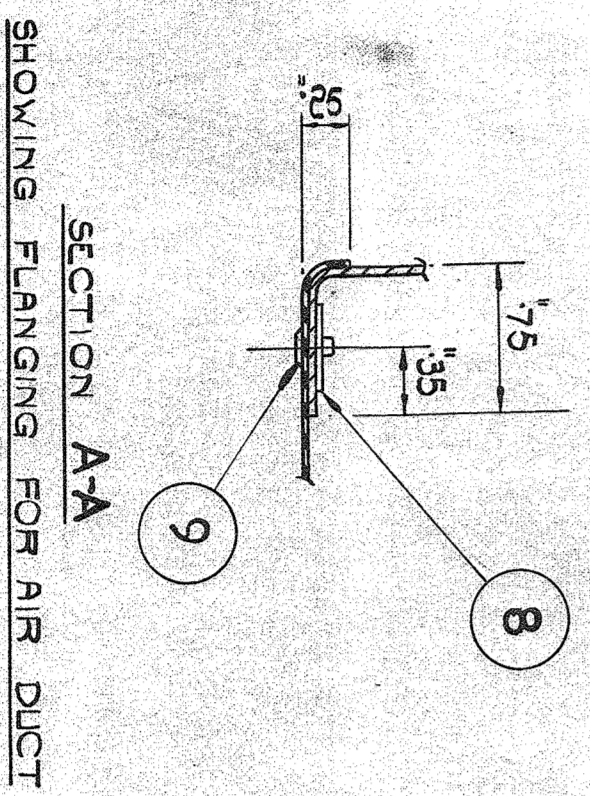
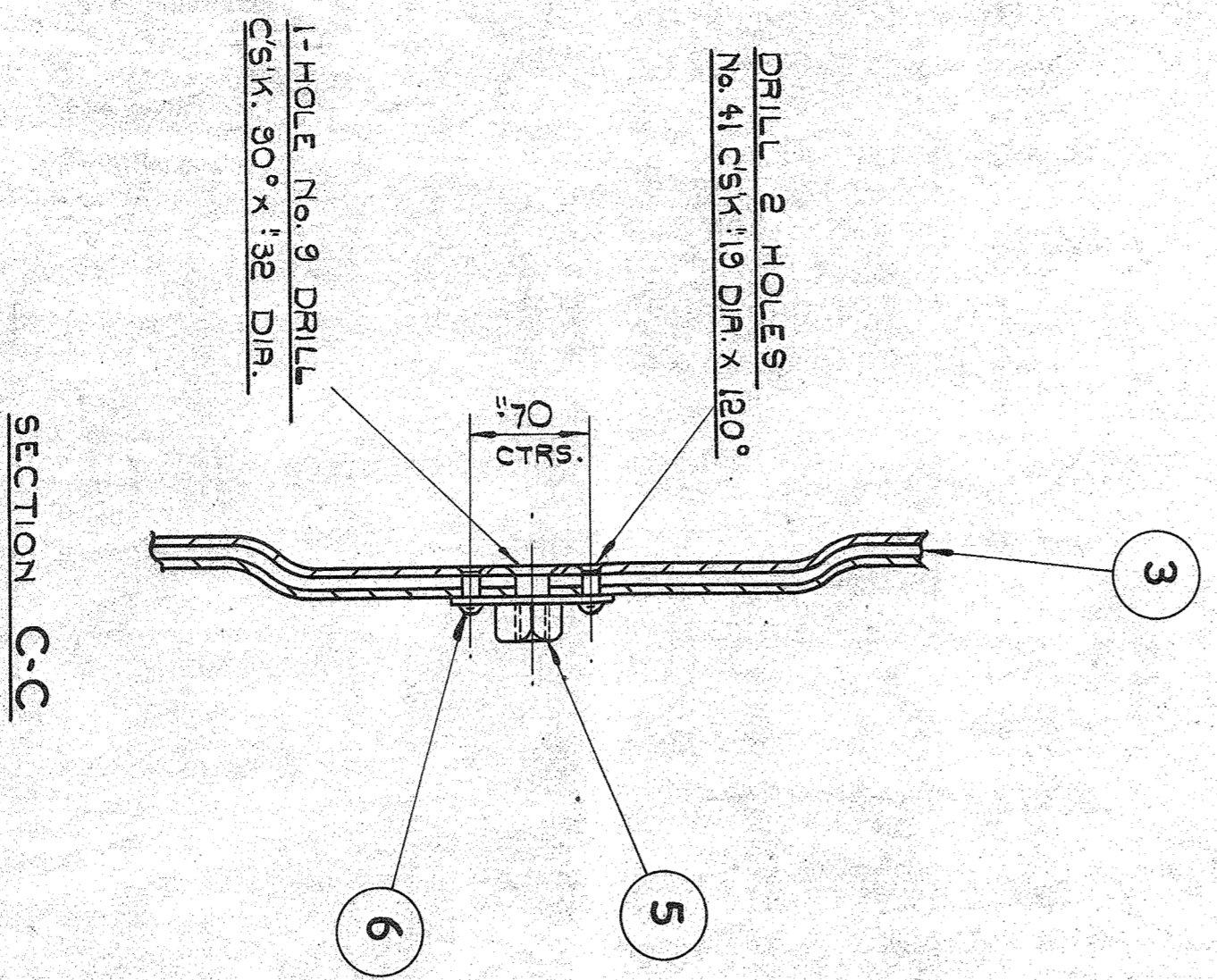
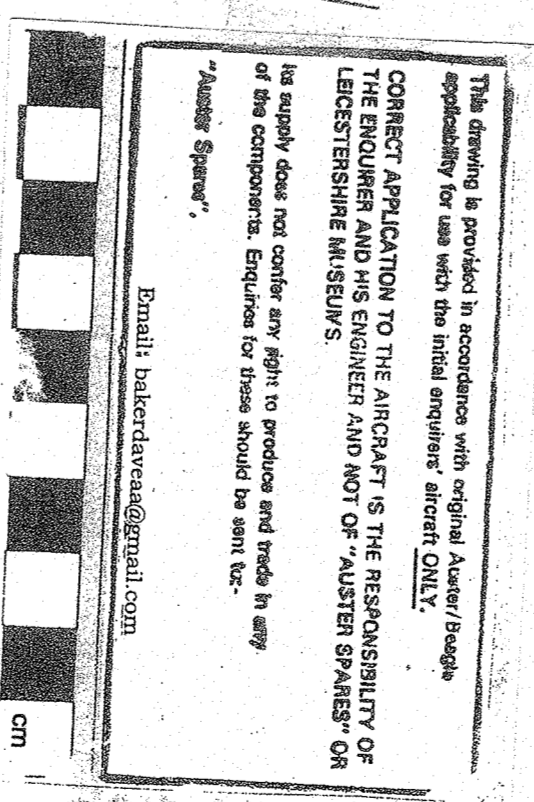


1. 00 NOT SCALE DRAWING
2. USED UNLESS OTHERWISE STATED.
3. DIMENSIONS ARE STATED UNLESS OTHERWISE STATED.
4. UNLESS OTHERWISE STATED, DIMENSIONS ARE ABOUT THIS DRAWING, THIS DRAWING OPERATIONS.

- NOTES:-
1. ALL LOGGERS ARE TO BE PARALLEL WITH CENTER OF FLANGE.
 2. PART IS SYMMETRICAL ABOUT ϕ EXCEPT FOR AIR-DUCT OPENING ON PORT SIDE ALL HOLES IN FLANGE ARE DRILLED NORMAL TO THE SURFACE.
 3. UNLESS OTHERWISE STATED, HOLES ARE DIMED TO OUTSIDE FACE OF FLANGE.



ALL DIMENSIONS ARE REFERENCE ONLY & COUPLINGS ARE TO BE MADE TO SHOPS TEMPLATE.



Issue No.	1	2	3	4
Issue Date	1/1/50	1/1/50	1/1/50	1/1/50
Issue By	W. J. B. A.	W. J. B. A.	W. J. B. A.	W. J. B. A.
Issue For	REVISION	REVISION	REVISION	REVISION

NO.	REV.	DESCRIPTION	DATE	BY	CHK.
11					
10					
9					
8					
7					
6					
5					
4					
3					
2					
1					

Author	W. J. B. A.
Checked	M. G. R.
Drawn	M. G. R.
Part No.	JA 60177
Part Name	NOSE COWL ASSEMBLY
Part No.	JA 60177
Part Name	NOSE COWL ASSEMBLY

DRG. No. EKF 310
PT. No. JH 60177