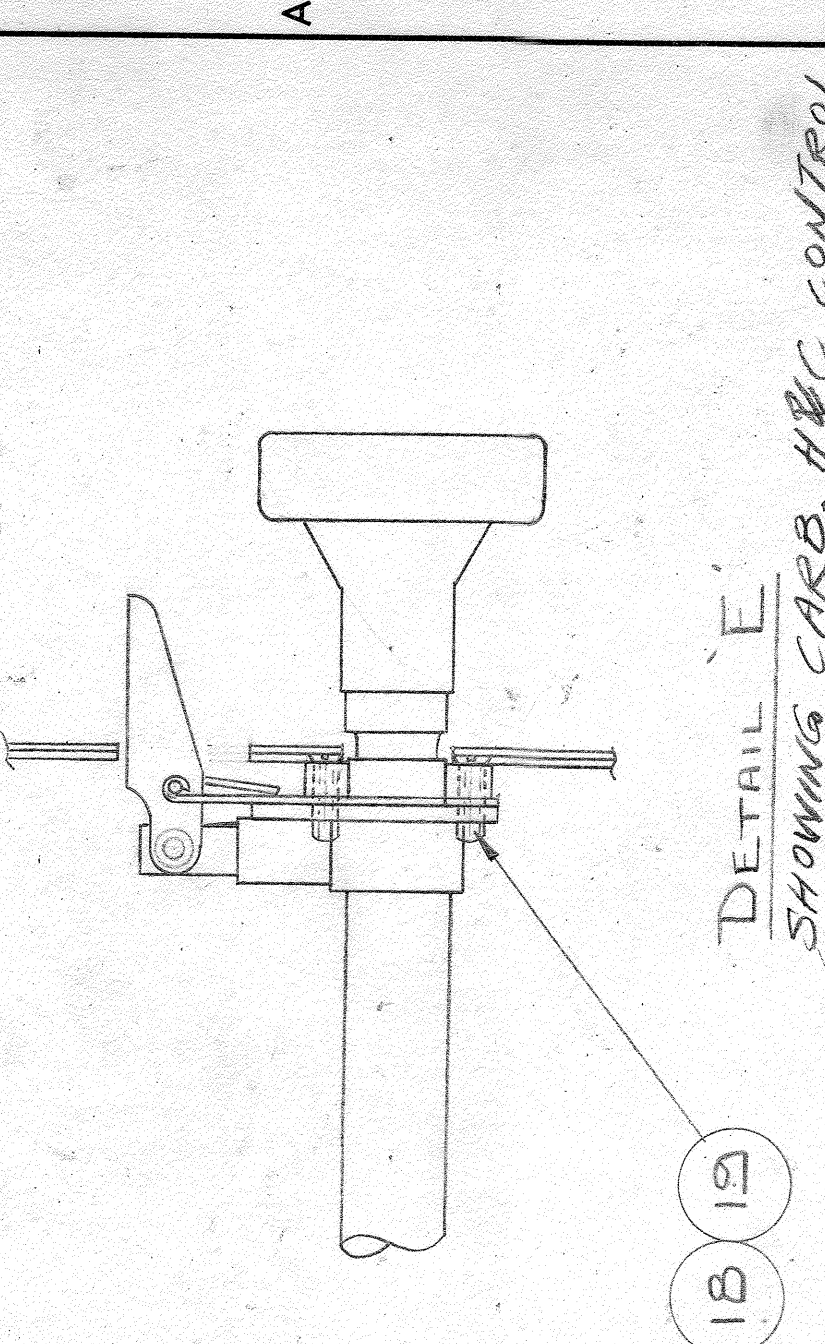
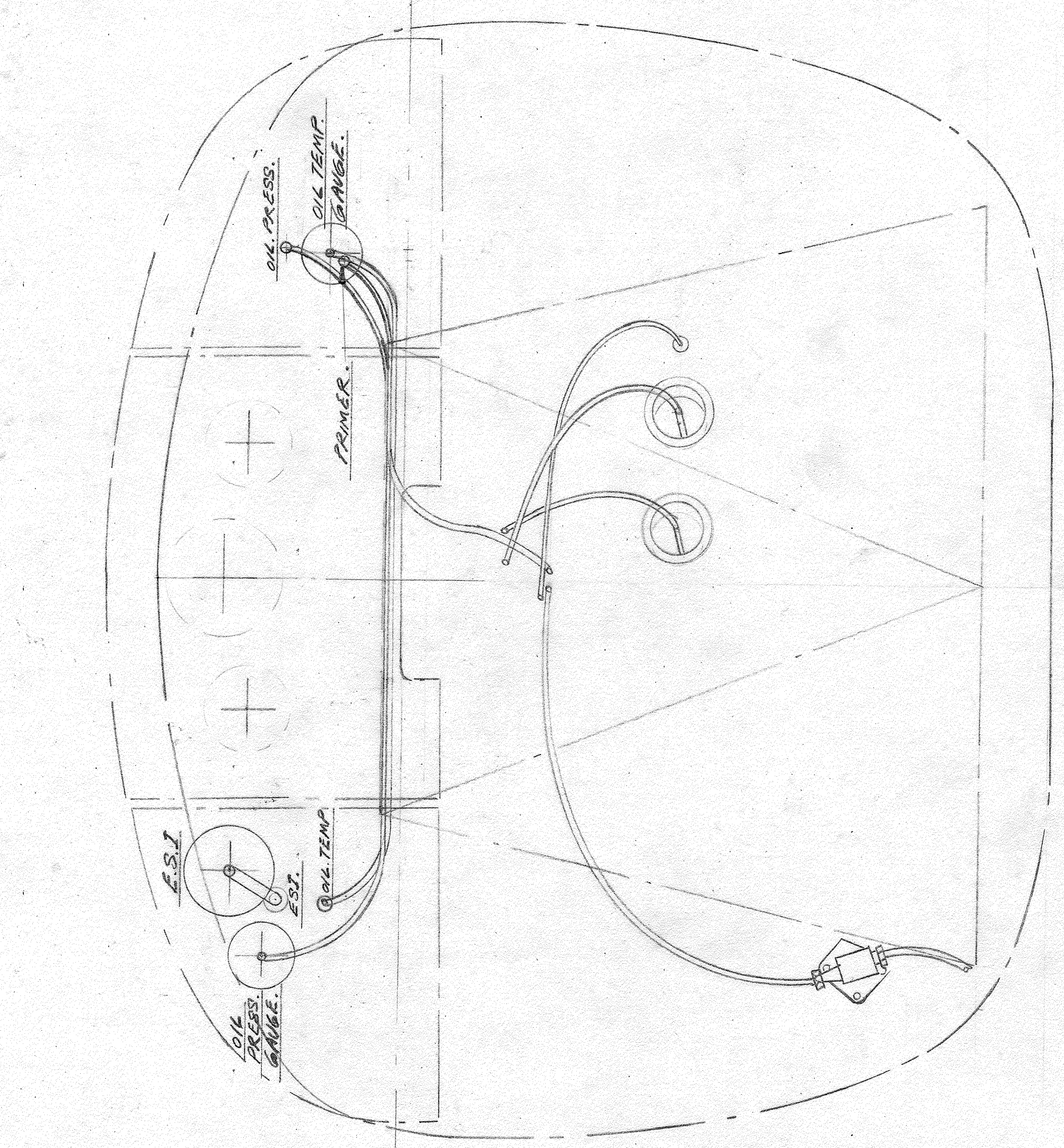
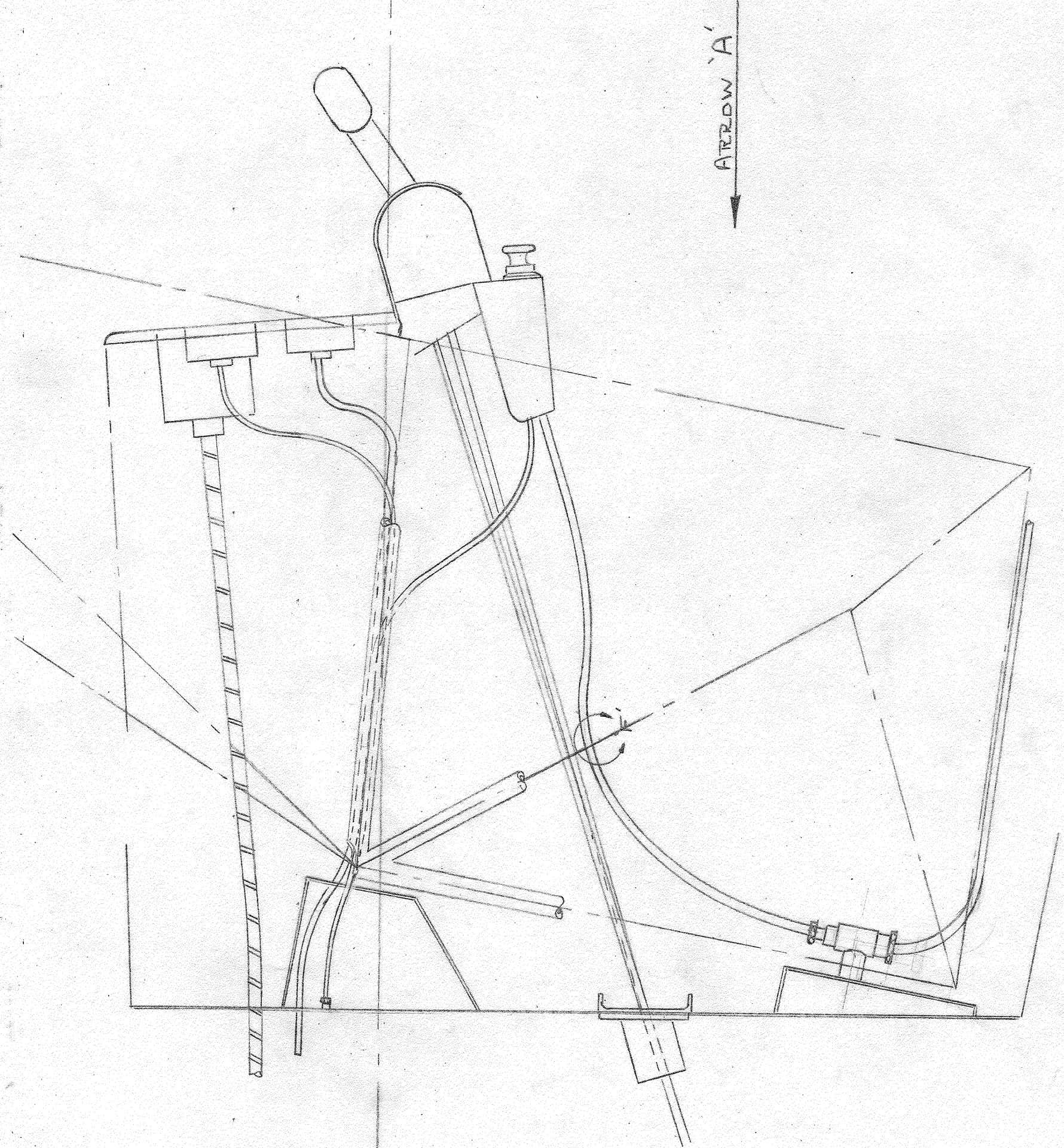
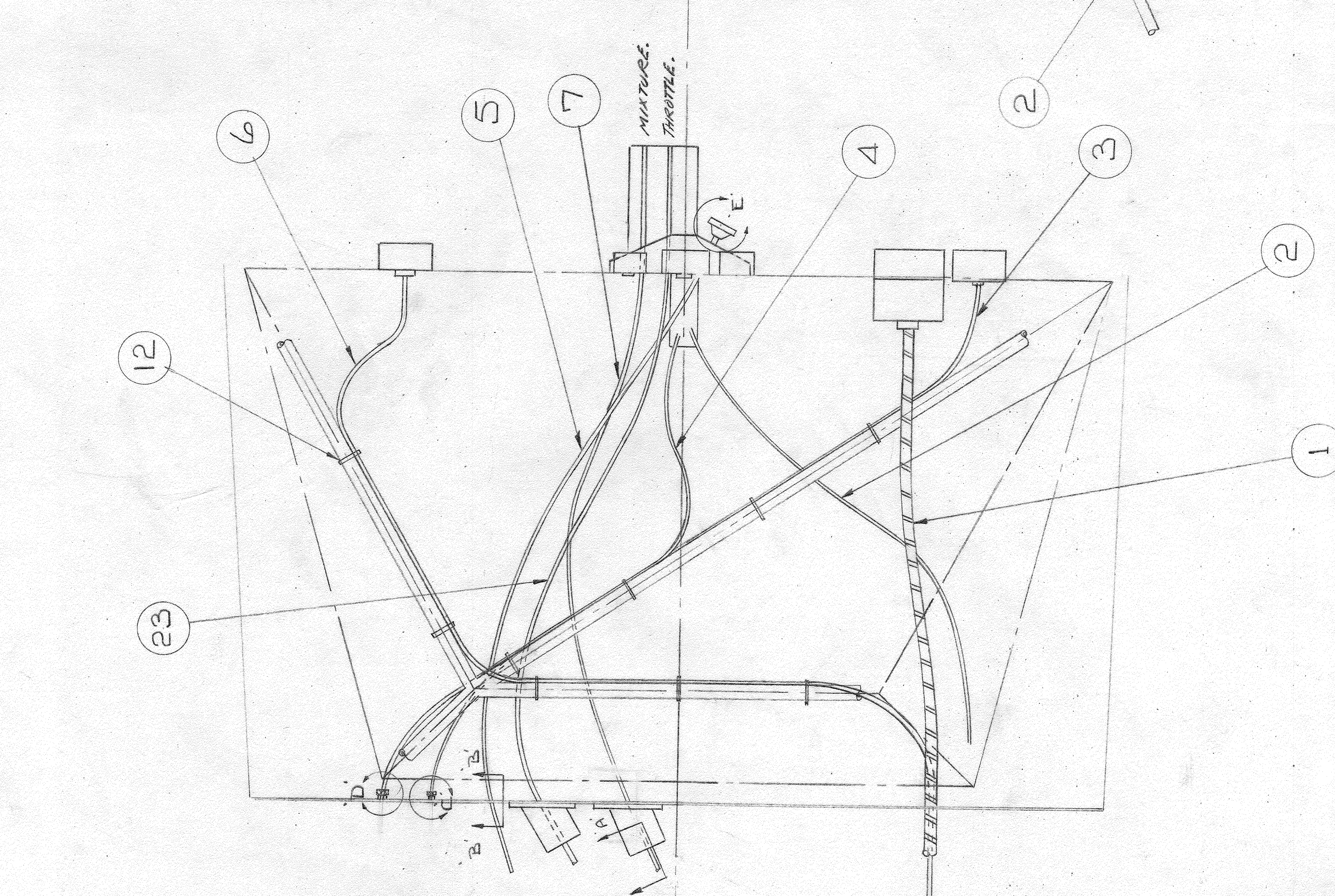


1. DO NOT SCALE DRAWING.
 2. USE DIMENSIONS UNLESS OTHERWISE STATED.
 3. TOLERANCES ON DIMENSIONS UNLESS OTHERWISE STATED.
 4. DRAWING IS FOR CONSTRUCTION OF PARTS ONLY. DRAWING OPERATIONS COMMENCING ON DATE.



DETAIL E
 SHOWING CARB. HVC CONTROL



VIEW ON ARROW A

25 MIXTURE
 10 THROTTLE

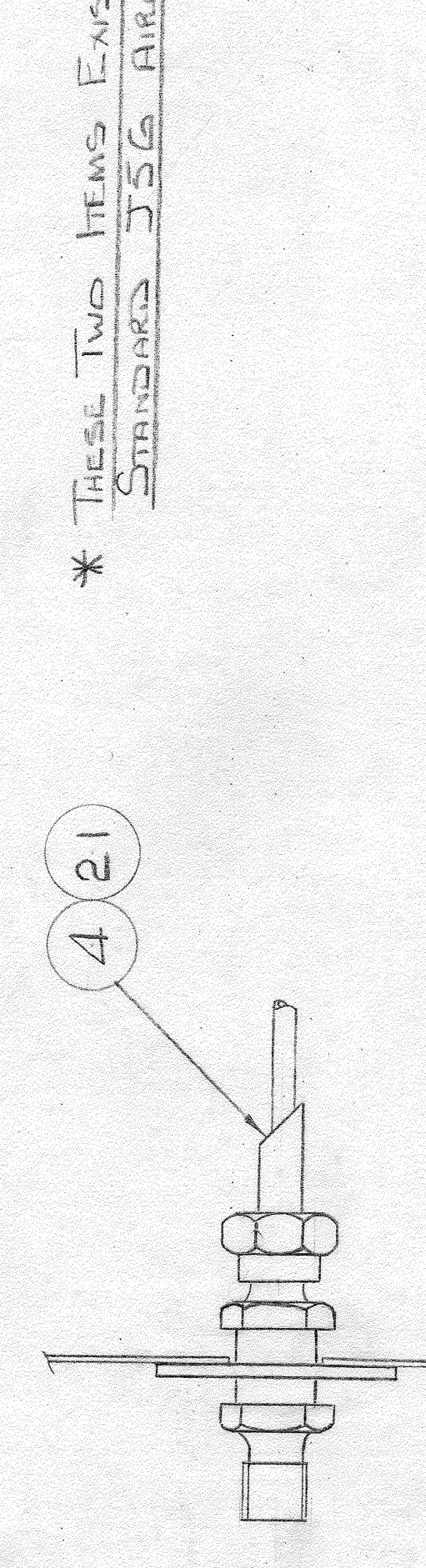
FOR DETAILS OF ATTACHMENTS
 AT ENGINE LEVERS SEE DRG. NO. EJT 1091.

SECTION A-A
 SHOWING MIXTURE & THROTTLE
 CONTROLS.

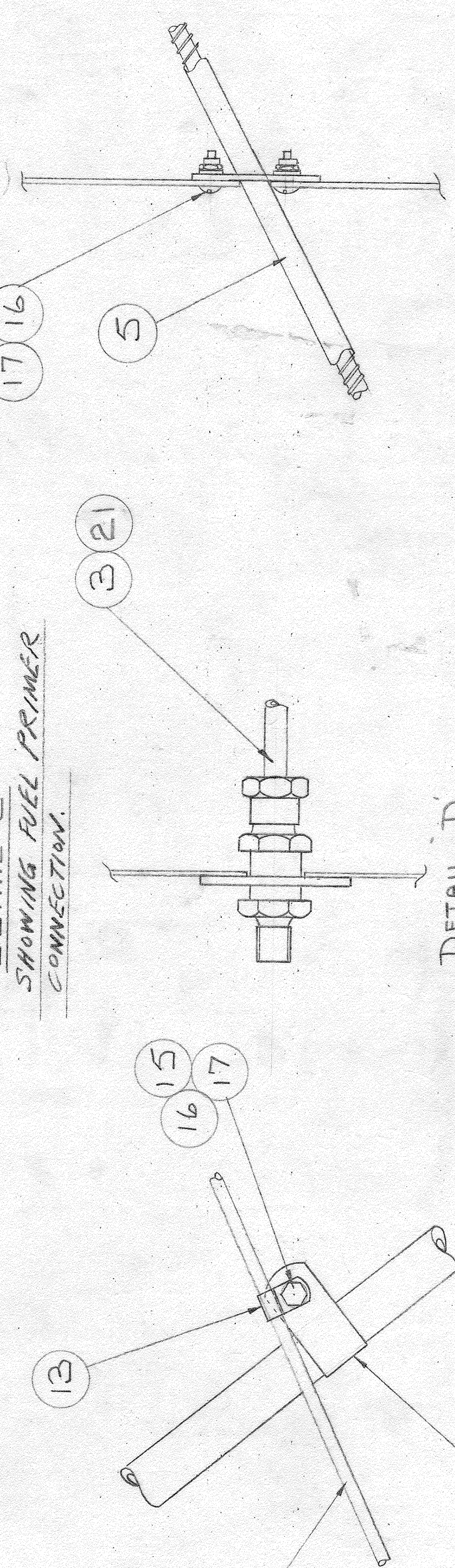
* THESE TWO HEAVY ENDS ON THE
 STANDARD J5G AIRCRAFT

LENGTHS OF ITEMS 7 & 23
 TO BE DETERMINED ON FIRST A/C

THESE ARE THE LIBERAL NUT
 TYPE OF CONNECTORS.
 (REF.)



DETAIL C
 SHOWING FUEL PRIMER
 CONNECTION.



DETAIL F
 SHOWING CLIPPING OF
 PRIMER PIPE TO FUEL LINE
 MEMBER.

SECTION B-B
 SHOWING CARB. HOT & COLD
 CONTROL.

ITEM NO.	DESCRIPTION	QTY	UNIT
1	LOCKING WIRE 22G	1	INCH
2	4BA. RD. HD. SCREW	2	INCH
3	4BA. RD. HD. SCREW	2	INCH
4	4BA. RD. HD. SCREW	2	INCH
5	4BA. RD. HD. SCREW	2	INCH
6	4BA. RD. HD. SCREW	2	INCH
7	4BA. RD. HD. SCREW	2	INCH
8	4BA. RD. HD. SCREW	2	INCH
9	4BA. RD. HD. SCREW	2	INCH
10	4BA. RD. HD. SCREW	2	INCH
11	4BA. RD. HD. SCREW	2	INCH
12	4BA. RD. HD. SCREW	2	INCH
13	4BA. RD. HD. SCREW	2	INCH
14	4BA. RD. HD. SCREW	2	INCH
15	4BA. RD. HD. SCREW	2	INCH
16	4BA. RD. HD. SCREW	2	INCH
17	4BA. RD. HD. SCREW	2	INCH
18	4BA. RD. HD. SCREW	2	INCH
19	4BA. RD. HD. SCREW	2	INCH
20	4BA. RD. HD. SCREW	2	INCH
21	4BA. RD. HD. SCREW	2	INCH
22	4BA. RD. HD. SCREW	2	INCH
23	4BA. RD. HD. SCREW	2	INCH
24	4BA. RD. HD. SCREW	2	INCH
25	4BA. RD. HD. SCREW	2	INCH
26	4BA. RD. HD. SCREW	2	INCH
27	4BA. RD. HD. SCREW	2	INCH
28	4BA. RD. HD. SCREW	2	INCH
29	4BA. RD. HD. SCREW	2	INCH
30	4BA. RD. HD. SCREW	2	INCH

NOTES:
 1. FOR TELEPLEX CABLE LUBRICATION SEE DRG. NO. EJT 540.
 2. LOCK ALL CONTROL KNOBS SO THAT WORKING IS HORIZONTAL.
 3. LOCK ALL UNIONS WITH ITEM 21.
 4. PRESSURE TEST FUEL LINES TO 15 LBS. INCH.
 5. ALL SCREWS, ETC. ATTACHED TO FIREWALL ARE CALLED UP ON DRG. EJT 1091.
 6. FOR GEOMETRY OF CONTROL SEE DRG. EJT 512.

PROTECTIVE TREATMENT	SCALE	ASSY. NO.	ISSUE
WELDING DATA	1/8" V	38133551	B

ITEM NO. 1
 PART NO. 1
 DESCRIPTION
 CHECKED BY
 DRAWN BY
 APPROVED BY
 DATE

AUSTER AIRCRAFT LIMITED, LEICESTER.
 TITLE: ASSY. OF ENGINE CONTROL RODS.

PROTECTIVE TREATMENT	SCALE	ASSY. NO.	ISSUE
WELDING DATA	1/8" V	38133551	B

PROTECTIVE TREATMENT	SCALE	ASSY. NO.	ISSUE
WELDING DATA	1/8" V	38133551	B

XXXXXXGH