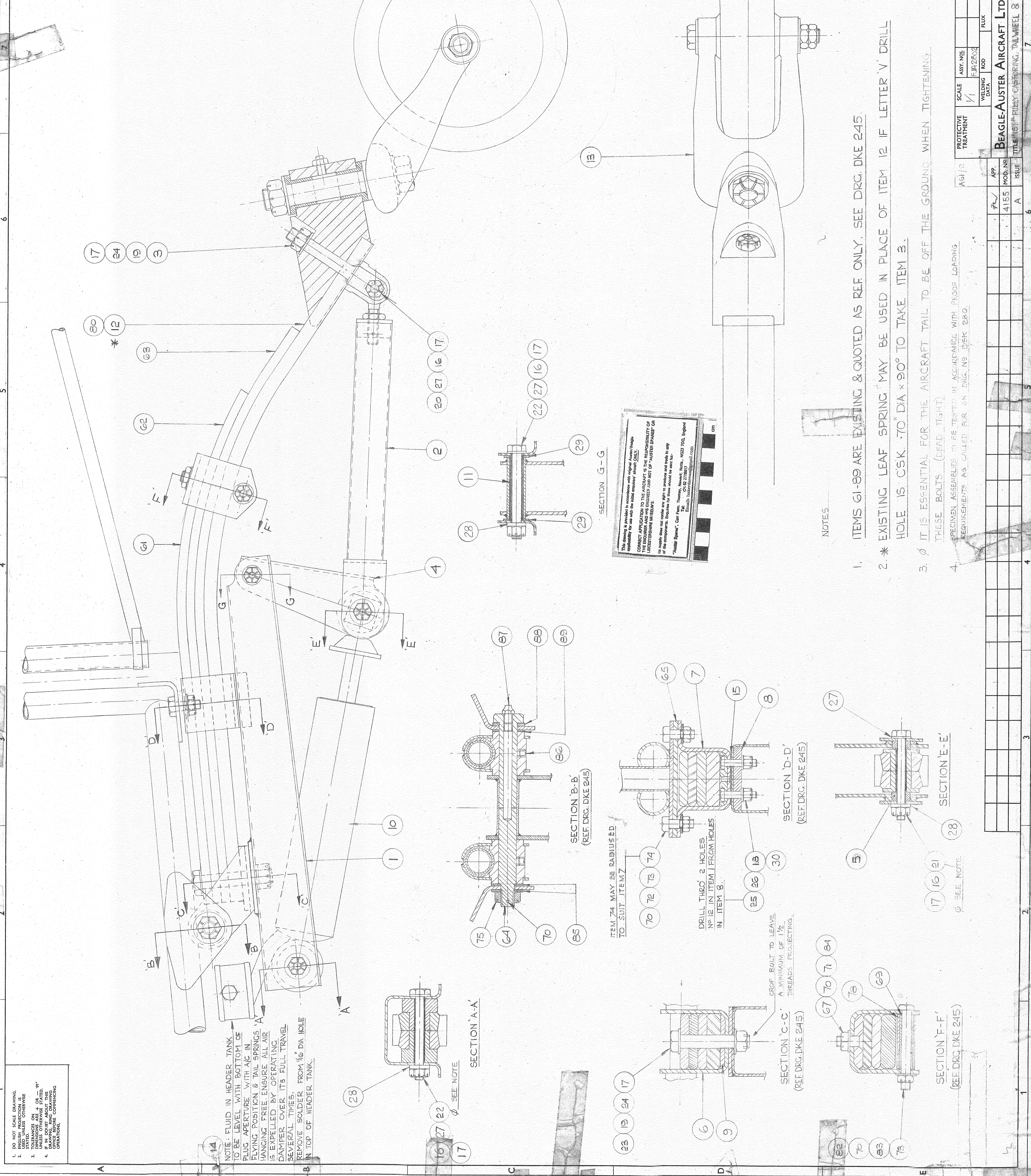


QTY	ITEM NO.	DESCRIPTION	REF. DRG.
1	89	K11302 WASHER	AKA 83
1	88	K11303 SHIM	AKA 84
1	87	TECALEMIT NIPPLE	
2	86	CRUB SCREW	MEA 12B
2	85	SP15-J WASHER	
1	84	SP15-G WASHER	
1	83	SP15-E WASHER	
1	82	ME5-18E BOLT	
1	81	BOTTOM LEAF SPRING	AE 329
1	79	Q8120 ROLLER	AGE 19
1	77	ST103/E WASHER	
1	76	AE5-15J BOLT	
2	75	AE7-J5 NUT	
4	74	ST103/K WASHER	
3	73	AE7-E5 NUT	
1	72	AE5-3E BOLT	
1	71	AE7-G5 NUT	
6	70	SP9CB SPLIT PIN	
1	69	Q8110 DISTANCE PIECE	AGE 17
1	68	K510E U-BRACKET	AKA 242
1	67	ME2-1G BOLT	
1	66	PACKER	AGE 24
1	64	K1819 BOLT-LEAF SPRING ATTMT	AKA 23
1	63	G5004 LOWER LEAF SPRING	AGE 67
1	62	G5012 MIDDLE LEAF SPRING	AGE 2
1	61	G50040 UPPER LEAF SPRING	AGE 66



- DO NOT SCALE DRAWING.
- USE DIMENSIONS UNLESS OTHERWISE SPECIFIED.
- TOLERANCES ON DIMENSIONS UNLESS OTHERWISE STATED: 0.005" UNLESS OTHERWISE STATED.
- IF A DIMENSION ABOUT THE CENTER LINE OF A HOLE OR GROOVE IS GIVEN, THE CENTER LINE IS TO BE USED UNLESS OTHERWISE SPECIFIED.

NOTE: FLUID IN HEADER TANK TO BE LEVEL WITH BOTTOM OF PLUG APERTURE WITH A/C IN FLYING POSITION & TAIL SPRINGS HANGING FREE. ENSURE ALL AIR IS EXPELLED BY OPERATING DAMPER COVER ITS FULL TRAVEL SEVERAL TIMES. REMOVE SOLDER FROM 1/8" DIA HOLE IN TOP OF HEADER TANK.

SECTION A-A
SEE NOTE

SECTION B-B
(REF DRG. DKE 245)

ITEM 74 MAY BE RADIUSSED TO SUIT ITEM 7

DRILL THRU 2 HOLES 1/8" DIA IN ITEM 1 FROM HOLES IN ITEM 6.

SECTION C-C
(REF DRG. DKE 245)

GRIP BOLT TO LEAVE A MINIMUM OF 1/2" THREADS PROJECTING.

SECTION D-D
(REF DRG. DKE 245)

SECTION F-F
(REF DRG. DKE 245)

SECTION E-E
SEE NOTE.

SECTION G-G

This drawing is provided in accordance with section 1.1 of the contract. It is the responsibility of the contractor to ensure that the drawing is used in accordance with the contract. The contractor is responsible for ensuring that the drawing is used in accordance with the contract. The contractor is responsible for ensuring that the drawing is used in accordance with the contract.

NOTES

- ITEMS 61-89 ARE EXISTING & QUOTED AS REF ONLY. SEE DRG. DKE 245.
- * EXISTING LEAF SPRING MAY BE USED IN PLACE OF ITEM 12 IF LETTER 'V' DRILL HOLE IS CSK .70" DIA x 90° TO TAKE ITEM 3.
- Ø IT IS ESSENTIAL FOR THE AIRCRAFT TAIL TO BE OFF THE GROUND WHEN TIGHTENING THESE BOLTS (LEAD TIGHT).
- SPECIMEN ASSEMBLIES TO BE TESTED IN ACCORDANCE WITH PROOF LOADING REQUIREMENTS AS CALLED FOR ON DRG. NO. DSK 250.

ITEM NO.	DESCRIPTION	QTY	REF. DRG.
30	SP90-CS SPLIT PIN	2	
29	SP14-J WASHER	2	
28	SP 16-E WASHER	3	
27	SP15-E WASHER	4	
26	SP15-C WASHER	2	
25	AE5-5C BOLT	2	
24	AE7-J5 NUT	2	
23	ME5-15J BOLT	1	
22	AE5-20E BOLT	2	
21	AE5-19E BOLT	1	
20	AE5-7E BOLT	1	
19	SP15-J WASHER	3	
18	AE7-C5 NUT	2	
17	SP90-C7 SPLIT PIN	1	
16	AE7-E5 NUT	4	
15	152383 PACKER	1	
14	CASTROLITE OIL		
13	152602 TAIL WHEEL ASSY.		
12	151786 LEAF SPRING BOTTOM		
11	1-STR 576 SPACER		
10	1A52378 DAMPER ASSEMBLY		
9	J52389 PACKER		
8	152373 PACKER		
7	1A52368 ASSY. SUPPORT		
6	1A52354 ATTACHMENT BRACKET		
5	1-STR-117 BUSH		
4	1A52364 LINK		
3	151760 FORK END		
2	1A52375 LINK		
1	1A50374 CHANNEL DAMPER		

PROTECTIVE TREATMENT	SCALE	WELDING DATA	FLUX
Ag1/2	1/1	FA 2602	

APP.	MOD. NO.	ISSUE	DATE	BY	DRG. NO.
7/1	4155	A			EJE 665

BEAGLE-AUSTER AIRCRAFT LTD. LEICESTER.
TITLE: TAIL WHEEL CASTING, TAIL WHEEL & DAMPER