

THIS DRAWING IS THE PROPERTY OF THE AIR FORCE AND IS LOANED TO YOU BY THE AIR FORCE. IT IS TO BE USED ONLY FOR THE PURPOSES AUTHORIZED BY THE DRAWING. IT IS TO BE RETURNED TO THE AIR FORCE WHEN NO LONGER REQUIRED. NO PART OF THIS DRAWING IS TO BE REPRODUCED OR TRANSMITTED IN ANY FORM OR BY ANY MEANS, ELECTRONIC OR MECHANICAL, INCLUDING PHOTOCOPYING, RECORDING, OR BY ANY INFORMATION STORAGE AND RETRIEVAL SYSTEM. OFFICIAL USE ONLY.

FABRIC TURNED IN & DOPED TO WOOD SUPPORT

ON/OFF SWITCH FOR DOWNWARD IDENT LAMP

SUPPORT FABRIC

SECTION EE (DIAGRAMMATIC ONLY)

APPROX 1/8" IN

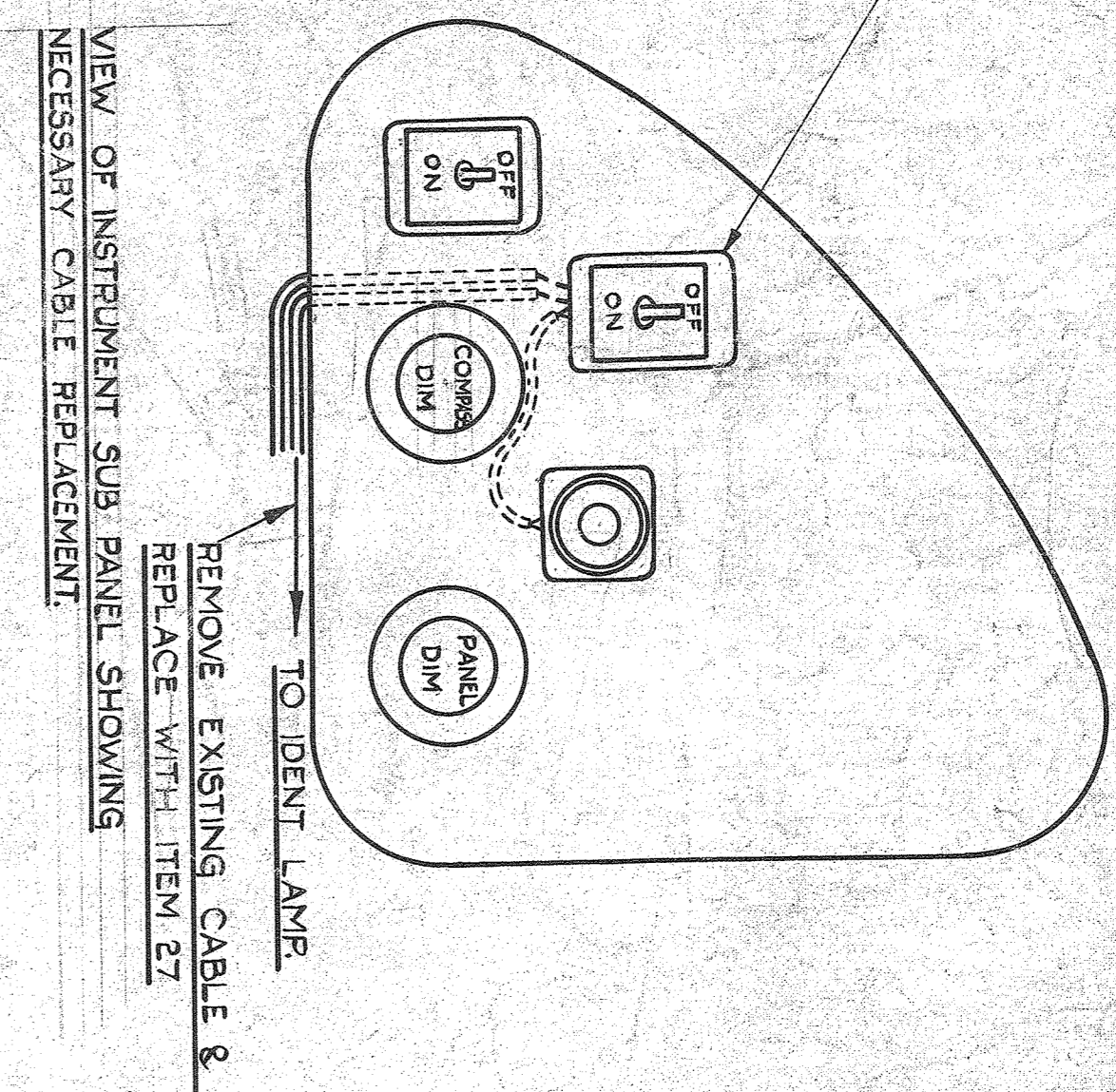
VIEW OF INSTRUMENT SUB-PANEL SHOWING NECESSARY CABLE REPLACEMENT

REMOVE EXISTING CABLE & REPLACE WITH ITEM 27

TO IDENT LAMP

VIEW ON ARROW

USING EXISTING SCREWS & WASHERS TO SECURE IDENT LAMP



NOTE

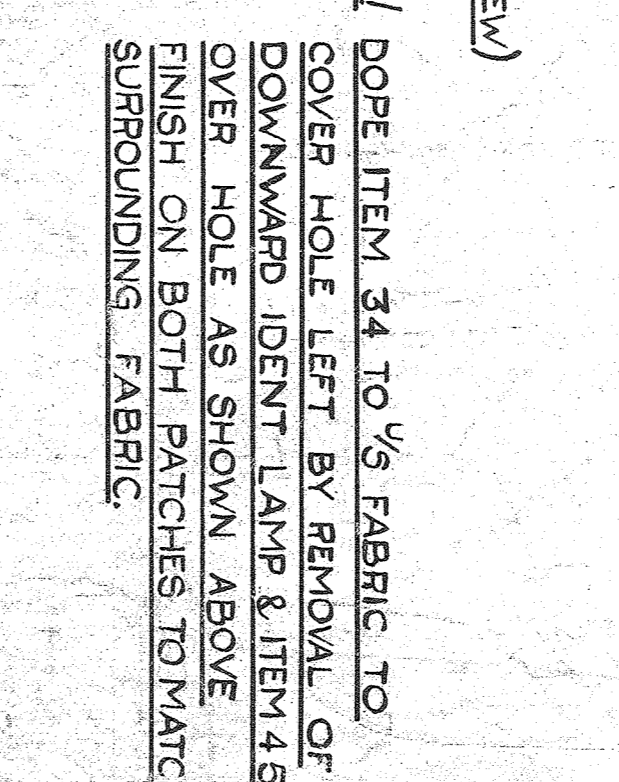
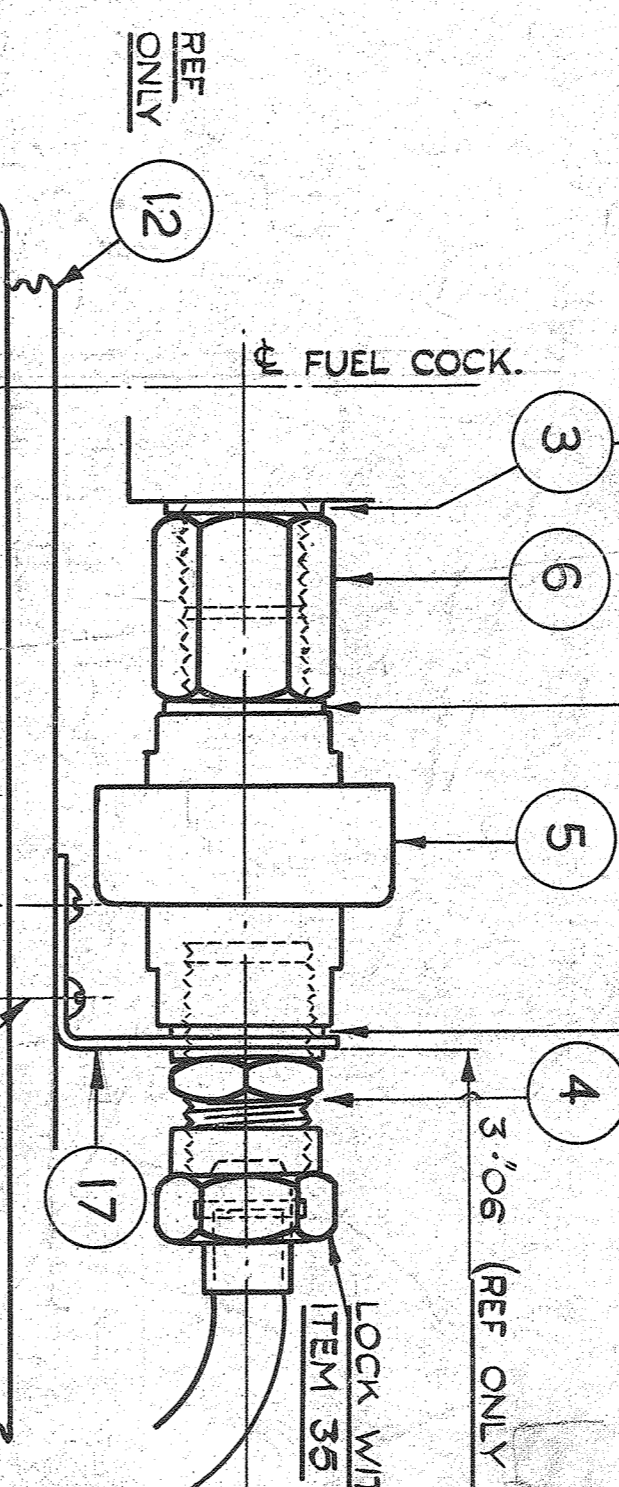
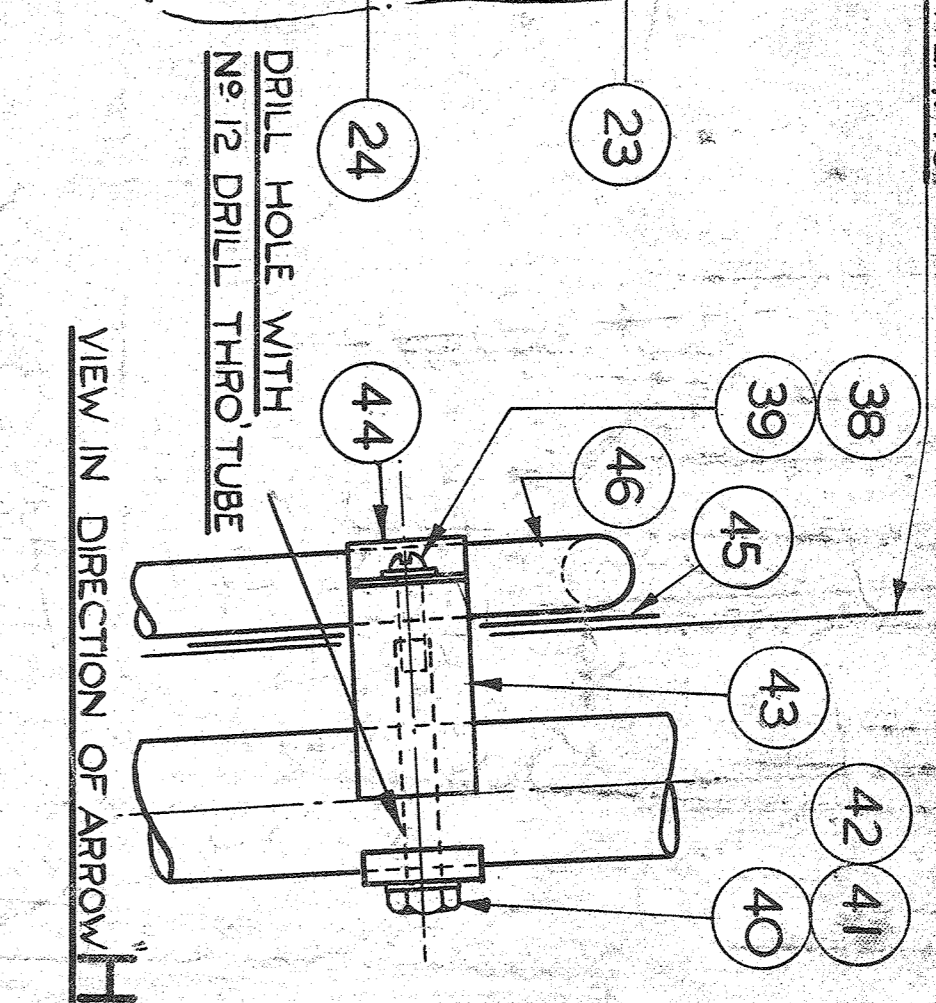
ITEMS 35, 36, 37, 38, 39, 40, 41, 42, 43, 44, 45, 46, 47, 48 INCL. CONSTITUTE THE FIXED FITTINGS FOR THE LONG RANGE TANK & ARE INTRODUCED AS PART A ON INT. MOD. 1298, AM MOD. 182, CLASS 2B.

ITEMS 1, 2, 4, 20 TO 23, 25, 35, 37, 39, 39, 44 & 46 INCLUSIVE CONSTITUTE THE REMOVABLE FITTINGS FOR THE LONG RANGE TANK & ARE INTRODUCED AS PART B ON INT. MOD. 1298, AM MOD. 193, CLASS 2B, S.O.D.

* ITEMS 1 AND 48 ARE ALTERNATIVES.

EXISTING FIBRE BLOCKS TO BE REMOVED & REPLACED BY ITEMS 23 & 24, SAME FIXINGS TO BE USED.

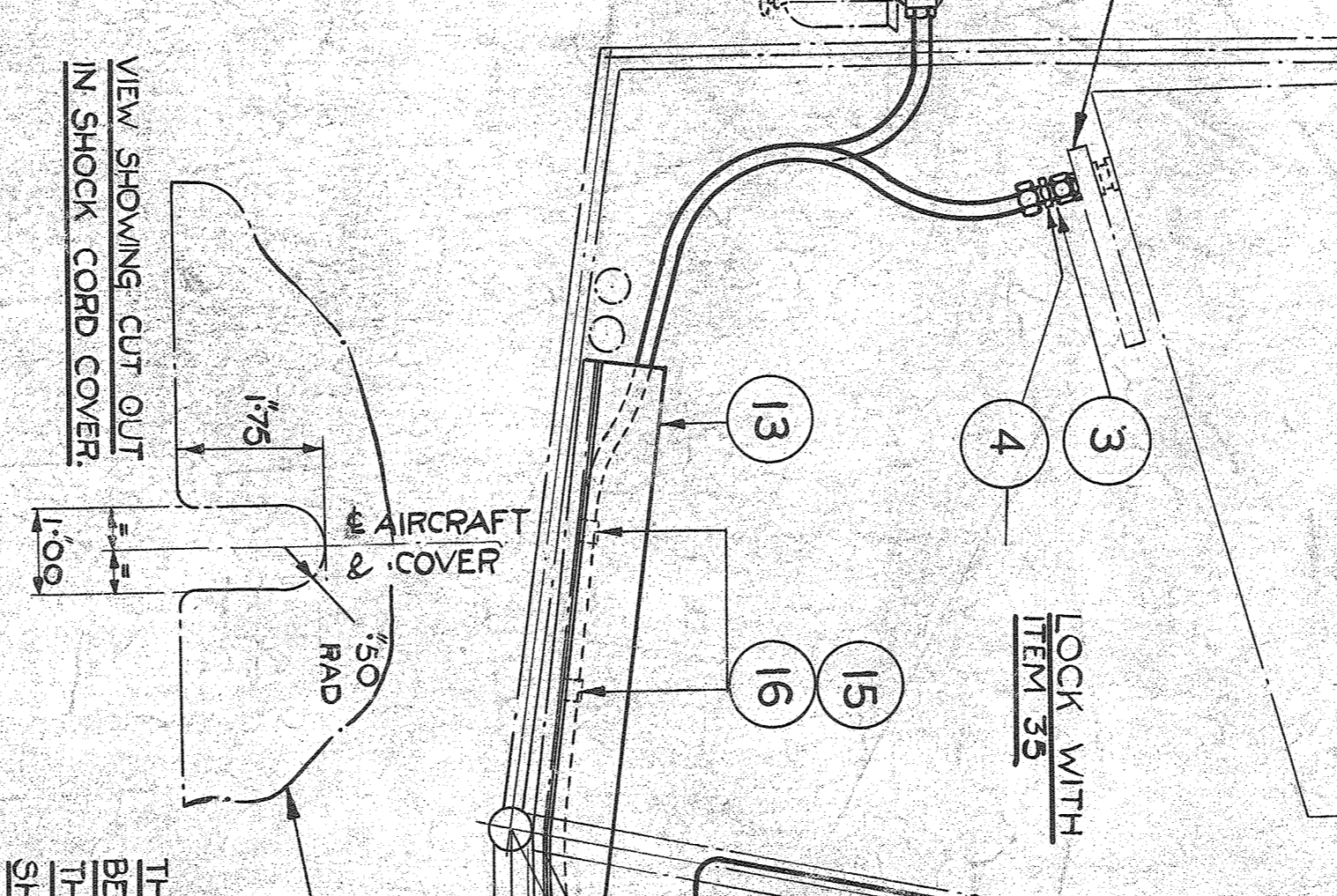
LINE OF FABRIC CUT HOLE PARALLEL WITH ITEM 43



NOTE/ DOPE ITEM 34 TO 1/8" FABRIC TO COVER HOLE LEFT BY REMOVAL OF DOWNWARD IDENT LAMP & ITEM 45 OVER HOLE AS SHOWN ABOVE. FINISH ON BOTH PATCHES TO MATCH SURROUNDING FABRIC.

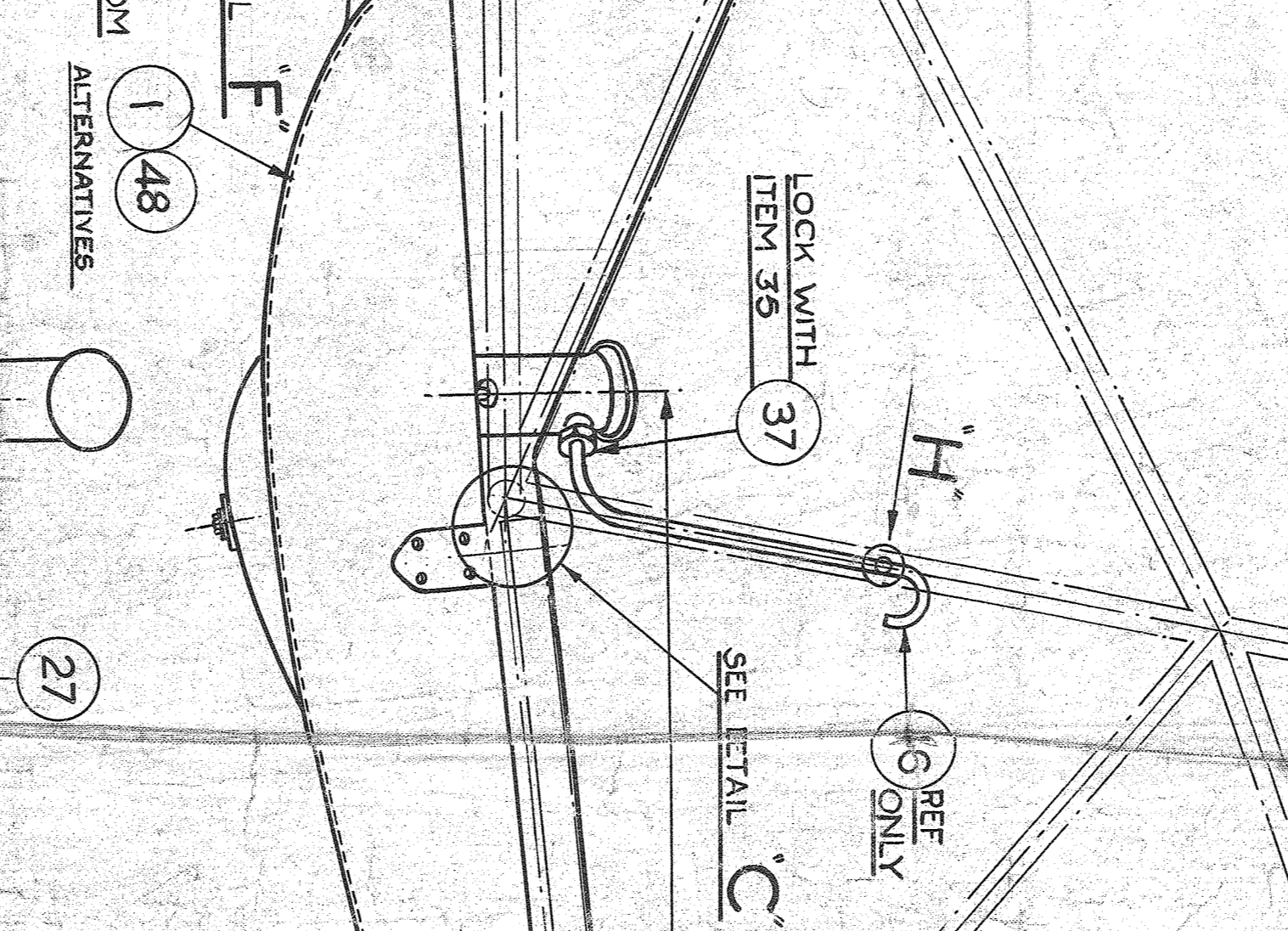
NOTE

EXISTING PETROL ON/OFF OPERATING ROD & KNOBS TO BE REMOVED FROM 1/4\"/>



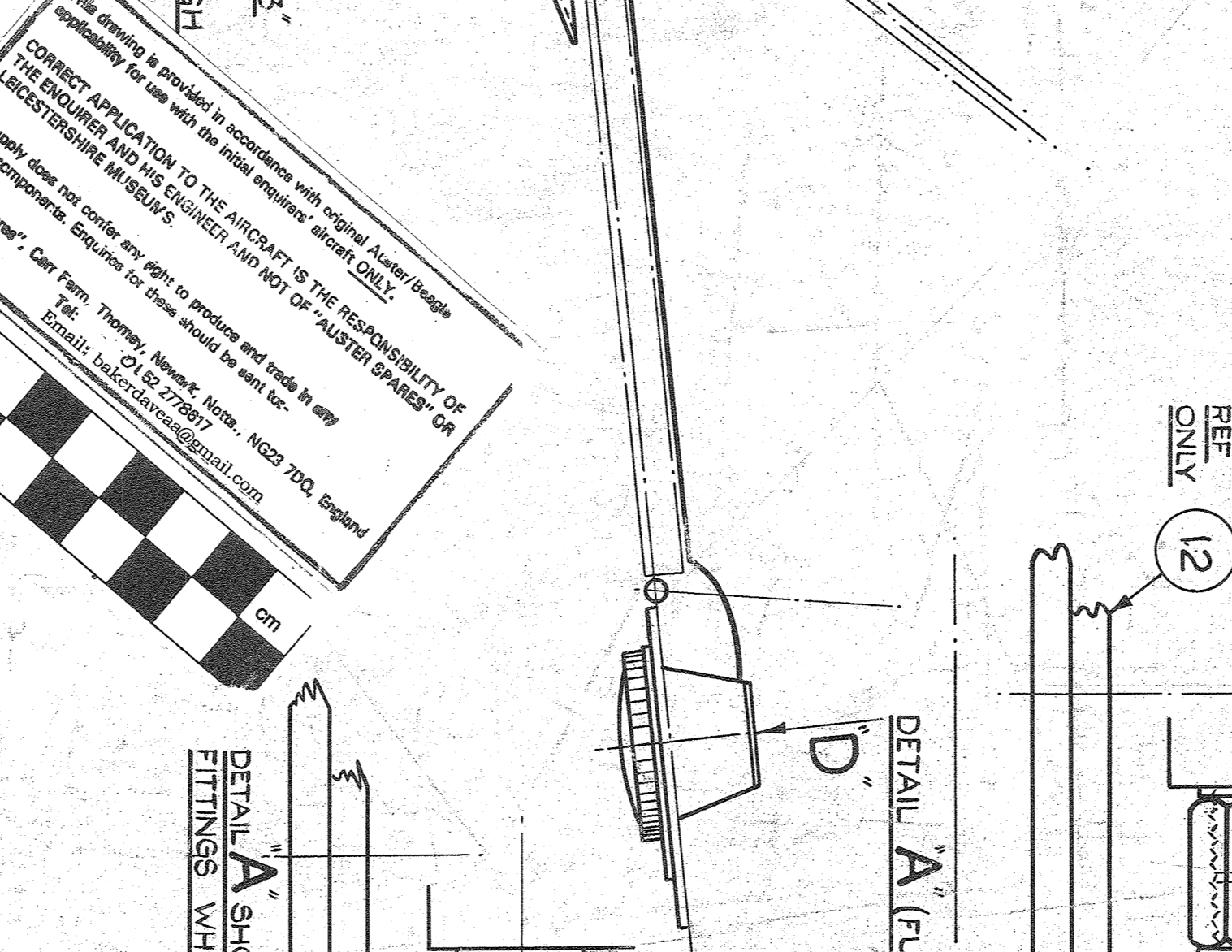
NOTE

THE 3 WAY COCK & NON RETURN VALVE ARE TO BE POSITIONED IN A TORE & AFT DIRECTION FROM THE FUEL CONNECTING PIPE (ITEM 2) WHICH SHOULD CLEAR THE SHOCK TRUSS BY A MINIMUM OF 3/16\"/>



NOTE

THE WORDS 'FUEL', 'OCTANE', '80', '87', '72', 'CAPACITY', '13 1/4', 'GALLONS', 'TO BE STENCILLED IN ONE INCH HIGH RED LETTERS ON FUEL TANK FABRIC IMMEDIATELY ABOVE FILLED CAP



ITEM NO.	DESCRIPTION	QTY	UNIT	REF. TO
1	1/4\"/>			
2	1/2\"/>			
3	1/4\"/>			
4	1/8\"/>			
5	1/8\"/>			
6	1/8\"/>			
7	1/8\"/>			
8	1/8\"/>			
9	1/8\"/>			
10	1/8\"/>			
11	1/8\"/>			
12	1/8\"/>			
13	1/8\"/>			
14	1/8\"/>			
15	1/8\"/>			
16	1/8\"/>			
17	1/8\"/>			
18	1/8\"/>			
19	1/8\"/>			
20	1/8\"/>			
21	1/8\"/>			
22	1/8\"/>			
23	1/8\"/>			
24	1/8\"/>			
25	1/8\"/>			
26	1/8\"/>			
27	1/8\"/>			
28	1/8\"/>			
29	1/8\"/>			
30	1/8\"/>			
31	1/8\"/>			
32	1/8\"/>			
33	1/8\"/>			
34	1/8\"/>			
35	1/8\"/>			
36	1/8\"/>			
37	1/8\"/>			
38	1/8\"/>			
39	1/8\"/>			
40	1/8\"/>			
41	1/8\"/>			
42	1/8\"/>			
43	1/8\"/>			
44	1/8\"/>			
45	1/8\"/>			
46	1/8\"/>			
47	1/8\"/>			
48	1/8\"/>			

NOTE

1. SEE DRAWING 1575 FOR DETAILS OF FUEL TANK

2. SEE DRAWING 1288 FOR DETAILS OF FUEL TANK

3. SEE DRAWING 1288 FOR DETAILS OF FUEL TANK

4. SEE DRAWING 1288 FOR DETAILS OF FUEL TANK

5. SEE DRAWING 1288 FOR DETAILS OF FUEL TANK

6. SEE DRAWING 1288 FOR DETAILS OF FUEL TANK

7. SEE DRAWING 1288 FOR DETAILS OF FUEL TANK

8. SEE DRAWING 1288 FOR DETAILS OF FUEL TANK

9. SEE DRAWING 1288 FOR DETAILS OF FUEL TANK

10. SEE DRAWING 1288 FOR DETAILS OF FUEL TANK

11. SEE DRAWING 1288 FOR DETAILS OF FUEL TANK

12. SEE DRAWING 1288 FOR DETAILS OF FUEL TANK

13. SEE DRAWING 1288 FOR DETAILS OF FUEL TANK

14. SEE DRAWING 1288 FOR DETAILS OF FUEL TANK

15. SEE DRAWING 1288 FOR DETAILS OF FUEL TANK

16. SEE DRAWING 1288 FOR DETAILS OF FUEL TANK

17. SEE DRAWING 1288 FOR DETAILS OF FUEL TANK

18. SEE DRAWING 1288 FOR DETAILS OF FUEL TANK

19. SEE DRAWING 1288 FOR DETAILS OF FUEL TANK

20. SEE DRAWING 1288 FOR DETAILS OF FUEL TANK

21. SEE DRAWING 1288 FOR DETAILS OF FUEL TANK

22. SEE DRAWING 1288 FOR DETAILS OF FUEL TANK

23. SEE DRAWING 1288 FOR DETAILS OF FUEL TANK

24. SEE DRAWING 1288 FOR DETAILS OF FUEL TANK

25. SEE DRAWING 1288 FOR DETAILS OF FUEL TANK

26. SEE DRAWING 1288 FOR DETAILS OF FUEL TANK

27. SEE DRAWING 1288 FOR DETAILS OF FUEL TANK

28. SEE DRAWING 1288 FOR DETAILS OF FUEL TANK

29. SEE DRAWING 1288 FOR DETAILS OF FUEL TANK

30. SEE DRAWING 1288 FOR DETAILS OF FUEL TANK

31. SEE DRAWING 1288 FOR DETAILS OF FUEL TANK

32. SEE DRAWING 1288 FOR DETAILS OF FUEL TANK

33. SEE DRAWING 1288 FOR DETAILS OF FUEL TANK

34. SEE DRAWING 1288 FOR DETAILS OF FUEL TANK

35. SEE DRAWING 1288 FOR DETAILS OF FUEL TANK

36. SEE DRAWING 1288 FOR DETAILS OF FUEL TANK

37. SEE DRAWING 1288 FOR DETAILS OF FUEL TANK

38. SEE DRAWING 1288 FOR DETAILS OF FUEL TANK

39. SEE DRAWING 1288 FOR DETAILS OF FUEL TANK

40. SEE DRAWING 1288 FOR DETAILS OF FUEL TANK

41. SEE DRAWING 1288 FOR DETAILS OF FUEL TANK

42. SEE DRAWING 1288 FOR DETAILS OF FUEL TANK

43. SEE DRAWING 1288 FOR DETAILS OF FUEL TANK

44. SEE DRAWING 1288 FOR DETAILS OF FUEL TANK

45. SEE DRAWING 1288 FOR DETAILS OF FUEL TANK

46. SEE DRAWING 1288 FOR DETAILS OF FUEL TANK

47. SEE DRAWING 1288 FOR DETAILS OF FUEL TANK

48. SEE DRAWING 1288 FOR DETAILS OF FUEL TANK

ITEM NO.	DESCRIPTION	QTY	UNIT	REF. TO
48	3/8\"/>			
47	1/2\"/>			
46	1/4\"/>			
45	1/4\"/>			
44	1/4\"/>			
43	1/4\"/>			
42	1/4\"/>			
41	1/4\"/>			
40	1/4\"/>			
39	1/4\"/>			
38	1/4\"/>			
37	1/4\"/>			
36	1/4\"/>			
35	1/4\"/>			
34	1/4\"/>			
33	1/4\"/>			
32	1/4\"/>			
31	1/4\"/>			
30	1/4\"/>			
29	1/4\"/>			
28	1/4\"/>			
27	1/4\"/>			
26	1/4\"/>			
25	1/4\"/>			
24	1/4\"/>			
23	1/4\"/>			
22	1/4\"/>			
21	1/4\"/>			
20	1/4\"/>			
19	1/4\"/>			
18	1/4\"/>			
17	1/4\"/>			
16	1/4\"/>			
15	1/4\"/>			
14	1/4\"/>			
13	1/4\"/>			
12	1/4\"/>			
11	1/4\"/>			
10	1/4\"/>			
9	1/4\"/>			
8	1/4\"/>			
7	1/4\"/>			
6	1/4\"/>			
5	1/4\"/>			
4	1/4\"/>			
3	1/4\"/>			
2	1/4\"/>			
1	1/4\"/>			

INSTALLATION LONG RANGE FUEL TANK

DATE: 15/10/57

BY: JEG

CHKD: JEG

SCALE: 1/4\"/>