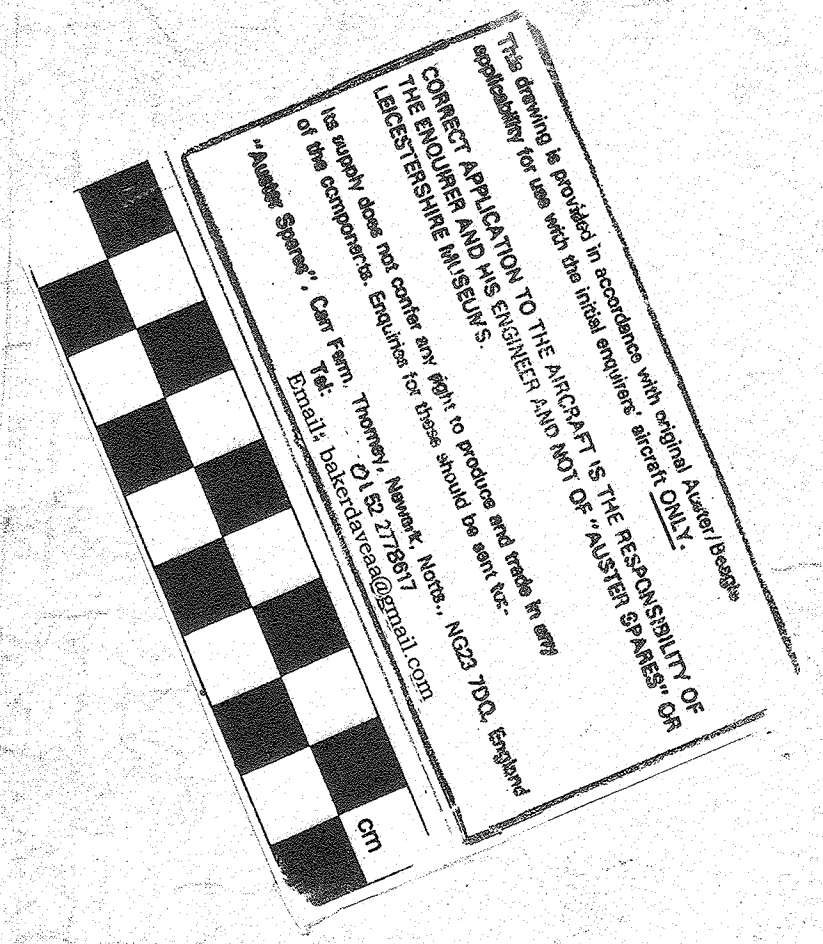
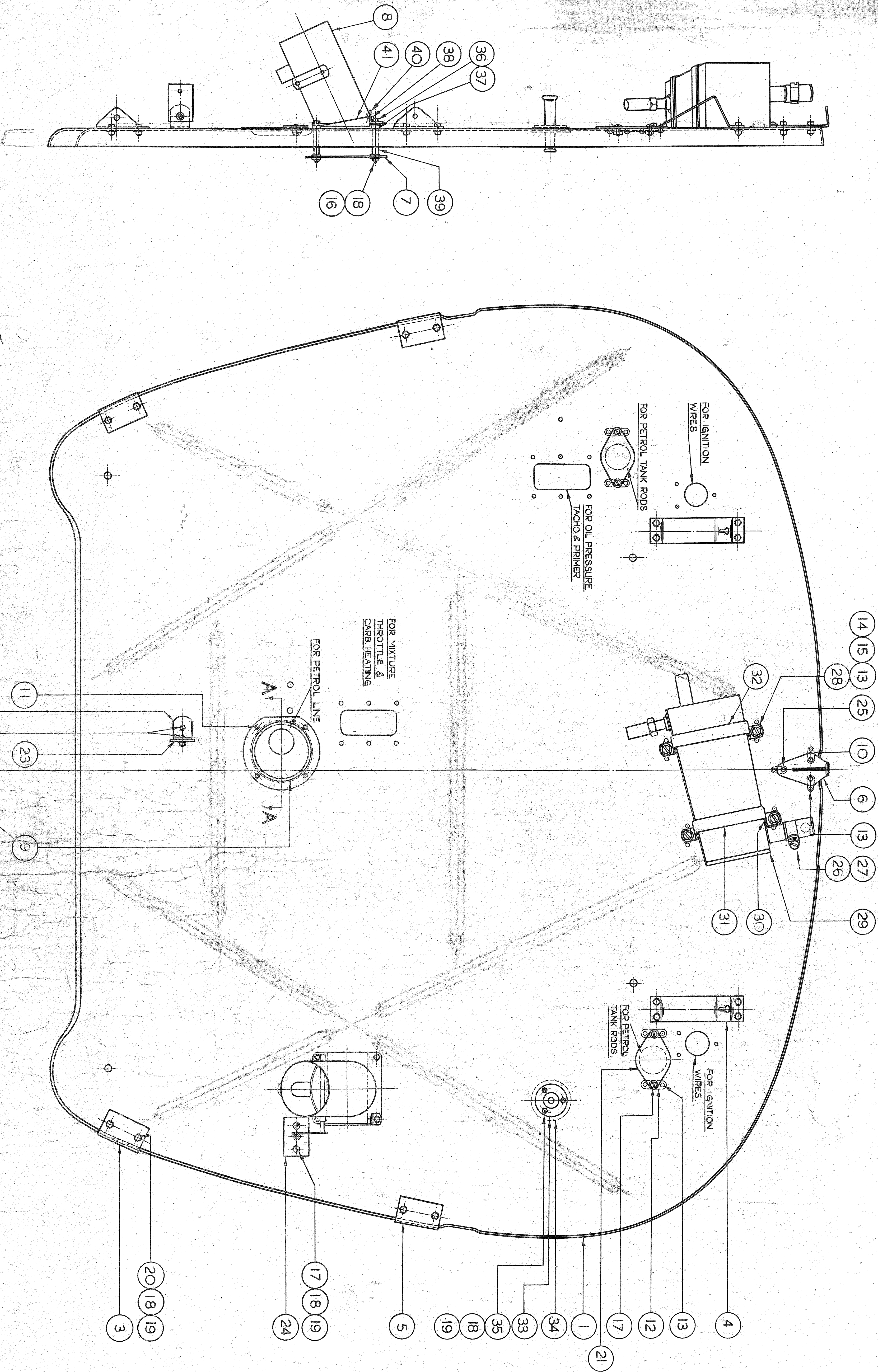


FOR PARTS IDENTIFICATION
 THIS DRAWING IS
 THE PROPERTY OF
 THE UNITED STATES
 GOVERNMENT
 AND IS LOANED TO
 YOUR ORGANIZATION
 IT IS TO BE RETURNED
 TO THE SOURCE
 FROM WHICH IT WAS
 OBTAINED
 GPO: 1964 O-571-100



| | | | |
|----|------|---|-----|
| 3 | 1186 | 3 | FLC |
| 4 | 1045 | 3 | FLC |
| 5 | 926 | 4 | FLC |
| 6 | 926 | 3 | FLC |
| 7 | 926 | 3 | FLC |
| 8 | 926 | 3 | FLC |
| 9 | 926 | 3 | FLC |
| 10 | 926 | 3 | FLC |
| 11 | 926 | 3 | FLC |
| 12 | 926 | 3 | FLC |
| 13 | 926 | 3 | FLC |
| 14 | 926 | 3 | FLC |
| 15 | 926 | 3 | FLC |
| 16 | 926 | 3 | FLC |
| 17 | 926 | 3 | FLC |
| 18 | 926 | 3 | FLC |
| 19 | 926 | 3 | FLC |
| 20 | 926 | 3 | FLC |
| 21 | 926 | 3 | FLC |
| 22 | 926 | 3 | FLC |
| 23 | 926 | 3 | FLC |
| 24 | 926 | 3 | FLC |
| 25 | 926 | 3 | FLC |
| 26 | 926 | 3 | FLC |
| 27 | 926 | 3 | FLC |
| 28 | 926 | 3 | FLC |
| 29 | 926 | 3 | FLC |
| 30 | 926 | 3 | FLC |
| 31 | 926 | 3 | FLC |
| 32 | 926 | 3 | FLC |
| 33 | 926 | 3 | FLC |
| 34 | 926 | 3 | FLC |
| 35 | 926 | 3 | FLC |
| 36 | 926 | 3 | FLC |
| 37 | 926 | 3 | FLC |
| 38 | 926 | 3 | FLC |
| 39 | 926 | 3 | FLC |
| 40 | 926 | 3 | FLC |
| 41 | 926 | 3 | FLC |

AUSTER

NOTE: ALL NUTS TO BE
 PUNCH LOCKED

NOTE TO D.O.
 WHEN MODIFYING THIS DRG.
 SEE ALSO NOTE ON DRG. DVA. 7.4
 RE SPARES

| NO. | QTY | DESCRIPTION | REF. NO. | QTY | DESCRIPTION | REF. NO. | QTY | DESCRIPTION |
|-----|-----|-------------------------|----------|-----|-------------|----------|-----|-------------|
| 1 | 1 | SLIDE | AGF 212 | 1 | | | | |
| 2 | 1 | BRACKET | AGF 211 | 4 | | | | |
| 3 | 1 | DISTANCE TUBE | | 1 | | | | |
| 4 | 1 | SPLIT PIN | | 1 | | | | |
| 5 | 2 | DISTANCE PIECE | AJT 38 | 2 | | | | |
| 6 | 4 | A/1E8 BOLT 4BA | | 4 | | | | |
| 7 | 3 | W/2B880 HEAD BOLT | | 3 | | | | |
| 8 | 1 | W/272 WASHER | AJA 2 | 1 | | | | |
| 9 | 1 | T/0724 CONNECTOR | CTA 1 | 1 | | | | |
| 10 | 1 | T/0820 BRACKET | AJA 5 | 1 | | | | |
| 11 | 1 | T/0921 BRACKET | AJA 6 | 1 | | | | |
| 12 | 1 | WHITE WEBBING 5/8 x 1/2 | AS REQD | | | | | |
| 13 | 1 | OIL SEPARATOR | | 1 | | | | |
| 14 | 1 | ANCHOR TUBULE | | 1 | | | | |
| 15 | 1 | MARMO TUBULE CLIP | | 1 | | | | |
| 16 | 1 | AR VENT | AJA 7 | 1 | | | | |
| 17 | 1 | INSULATING PATCH | AGA 236 | 1 | | | | |
| 18 | 1 | RUBBER STRIP CONN. | AGC 76 | 1 | | | | |
| 19 | 1 | BRACKET | AFC 91 | 1 | | | | |
| 20 | 1 | BLANKING PLATE | AGA 812 | 1 | | | | |
| 21 | 1 | A/1/8 BOLT 4BA | | 1 | | | | |
| 22 | 1 | NUT 4BA PLAIN | | 1 | | | | |
| 23 | 1 | WASHER 4BA | | 1 | | | | |
| 24 | 1 | SCREW 4BA | | 1 | | | | |
| 25 | 1 | WASHER 2BA | | 1 | | | | |
| 26 | 1 | SCREW 2BA | | 1 | | | | |
| 27 | 1 | SCREW 2BA | | 1 | | | | |
| 28 | 1 | SCREW 2BA | | 1 | | | | |
| 29 | 1 | SCREW 2BA | | 1 | | | | |
| 30 | 1 | SCREW 2BA | | 1 | | | | |
| 31 | 1 | SCREW 2BA | | 1 | | | | |
| 32 | 1 | SCREW 2BA | | 1 | | | | |
| 33 | 1 | SCREW 2BA | | 1 | | | | |
| 34 | 1 | SCREW 2BA | | 1 | | | | |
| 35 | 1 | SCREW 2BA | | 1 | | | | |
| 36 | 1 | SCREW 2BA | | 1 | | | | |
| 37 | 1 | SCREW 2BA | | 1 | | | | |
| 38 | 1 | SCREW 2BA | | 1 | | | | |
| 39 | 1 | SCREW 2BA | | 1 | | | | |
| 40 | 1 | SCREW 2BA | | 1 | | | | |
| 41 | 1 | SCREW 2BA | | 1 | | | | |

Part N2JA10915

DRG. NO. EJA. 4