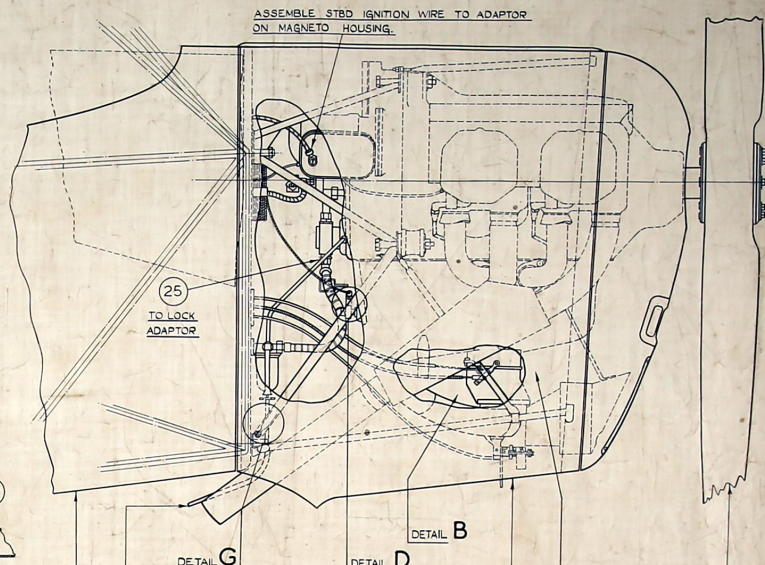
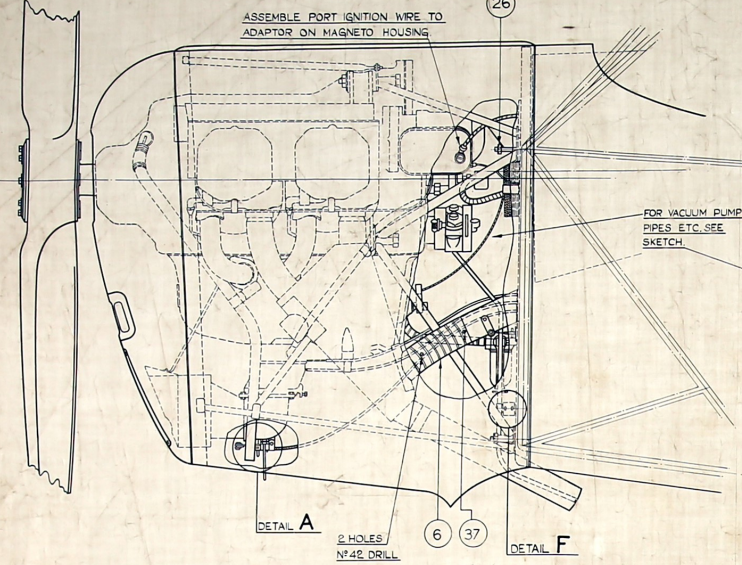
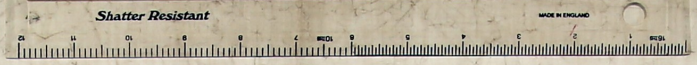
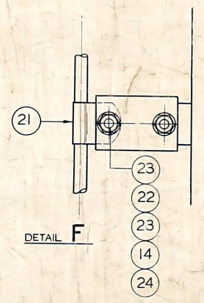
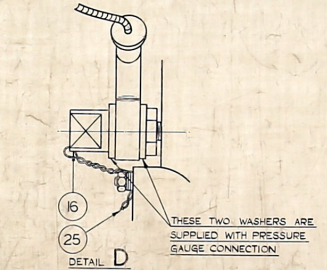
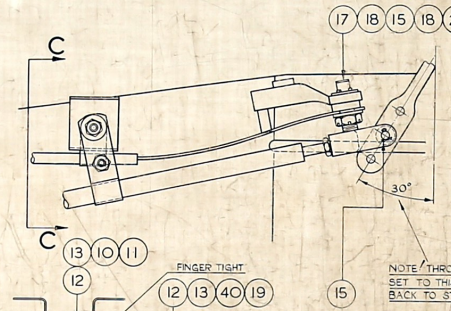
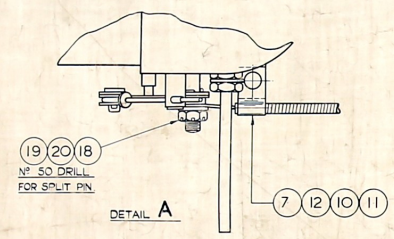


ALL DIMENSIONS ARE IN INCHES UNLESS OTHERWISE STATED.
 3. TOLERANCES ON FRACTIONAL DIMENSIONS ARE 4 OR 1/64 UNLESS OTHERWISE STATED.
 4. IF IN DOUBT ABOUT THIS DRAWING, RING DRAWING OFFICE BEFORE COMMENCING OPERATIONS.

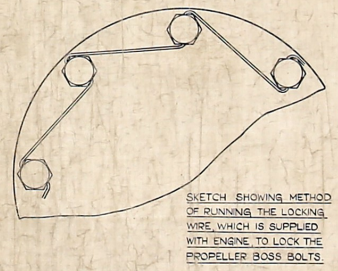


VIEW ON PORT SIDE

VIEW ON STBD SIDE



NOTE LOCATE DRILLED END OF CROSS TUBE TO PORT ENGINE MOUNT USING 1/4" DIA BOLT FOR LOCATION, THEN MARK OFF HOLE AT BOTTOM END FROM EXISTING HOLE IN LUG AT BOTTOM REAR OF STBD ENGINE MOUNT KEEPING 1/4" HOLE IN LUG ON 1/2" CROSS TUBE. REMOVE CROSS TUBE & DRILL 1/4" DIA HOLE CONCENTRIC WITH MARKING. REFIX CROSS TUBE TO PORT MOUNT USING 1 OFF ITEMS 42, 18 & 43. REAM BOTTOM HOLE THRO' LUG ON STBD MOUNT & CROSS TUBE TO 1/8" DIA. FINALLY BOLT UP USING 1 OFF ITEMS 42, 18 & 43.



DETAIL G

FOR IGNITION DIAGRAM SEE DRG. NO. DG. 8 FOR INTER-CHANGEABILITY DATA ENGINE MOUNT TO FUSLAGE. SEE DRG. NO. IS. 14. THIS DRG. IS NOT TO BE USED FOR INSPECTION PURPOSES.

38	J6389	PIGTAIL LEAD 4' LG.	RAF RFP BK. HEAD	5
37	PARKER MALON SCREWS	NO. 4 X 1/2 LG.	TYPE 21 HEAD M	2
36	JG191	TUBE	ATF 5	1
35	JG193	TUBE	ATF 7	1
34	JG190	TUBE	ATF 4	1
33	JG189	TUBE	CTF 3	1
32	JG192	TUBE	ATF 6	1
31	MARK 00	TUBULEE CLIP		2
30	J7619 4	HOSE	ATF 8	4
29	A65	7/16" D UNION NUT		3
28	A55	7/32" D COLLAR		3
27	A55	7/32" D OLIVE		3
26	A167	1/8" SLOTTED NUT		4
25	A67	1/8" LOCKING WIRE	SOFT IRON	AS REQD.
24	A67	1/8" NUT		1
23	A55	1/8" WASHER PLAIN		2
22	A65	1/8" RD. HD. SCREW		1
21	F3673	CLIP	AFC 50	1
20	A67	1/8" NUT SLOTTED		2
19	A55	7/32" SPLIT PIN		7
18	A55	1/8" WASHER PLAIN		5
17	A67	1/8" STUD	AGF 93	1
16	F3680	BLANKING NUT	AFC 86	1
15	A55	7/32" SPLIT PIN		2
14	A55	1/8" SPRING WASHER		1
13	A55	1/8" WASHER PLAIN		2
12	A1/C	1/8" BOLT		3
11	A67	1/8" NUT PLAIN		3
10	A55	1/8" SPRING WASHER		3
9	A1/C	1/8" BOLT		1

This drawing is provided in accordance with original drawings made available for use and for reproduction under G.P.O. COPYRIGHT.
 CORRECT APPLICATION TO THE AIRCRAFT IS THE RESPONSIBILITY OF THE REPAIR AND/OR ENGINEER AND NOT OF "AUSTER SPARES" OR LEICESTERSHIRE MAILINGS.
 We supply does not carry any right to produce and trade in any of the component. Enquiries for these should be sent to:
 "Auster Spares", Carl Park, Thorney, Newark, Notts, NG23 7DD, England
 Tel: (01652) 77917

45	MARK 00	TUBULEE CLIP		8	F3673	CLIP	AFC 82	1
44	F 6405	WASHER	AFF 106	4	F624	CLIP	AFF 58	2
43	REPAIR	SIMMONDS NUT		2	6678	FLEXIBLE TUBE	AGF 26/2	1
42	A1-C	BOLT		2	J6201	PUMP DRAIN PIPE	CTF 10	1
41	F6154	CROSS TUBE	AFF 73	1	5630	AIRSCREW	RICHMOND	1
40	A67	1/8" SLOTTED NUT		1	41	1/8" GA OF COWLS	EGF 2	1
39	JG425	HOSE	ATF 40	1	6155	ASSY OF ENGINE	EJF 2	1

5	100	1695	26	Z				
3	1M187	1001	3	FLC				
2	128	1061	2A	FLC				
Z		1042	3	FLC				
F		1039	3	FLC				
D		1020	3	FLC				
C		1012	4	FLC				
B		1006	3	FLC				
A		1000	3	FLC				
ISSUE	REV	INTERNAL	WORKING	CLASS	APP	INTO		
TYPE	AUSTER							

PROTECTIVE TREATMENT: ASSY NO. ETC.2

SCALE: 1/2" & FULL SIZE

TAYLORCRAFT AEROPLANES (ENGLAND) LTD. LEICESTER.

DESCRIPTION: INTERMEDIATE FUSELAGE ASSY. EJA 37

PART NO. 7A10993