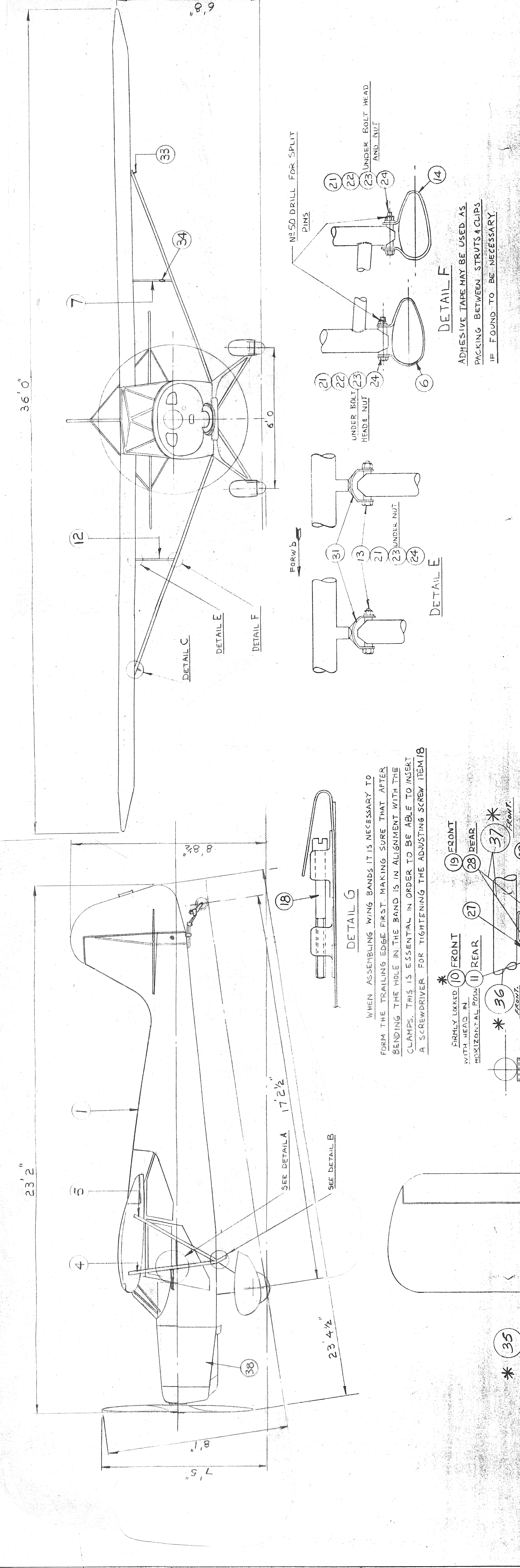


ISSUE	NO.	ALT. NO.	DATE	BY	DA.



ITEM	PART NO.	DESCRIPTION	QTY	UNIT	SCALE	DATE	BY
43	104833	INST. OF CG DATA CARD & HOLDER	1				
42	104833	CG DATA CARD	1				
41	104833	700L KIT	1				
40	104833	FILLER CAP 89/87 OCTANE	2				
39	104833	FILLER CAP 91/96 OCTANE	2				
38	104833	WASHER	1				
37	104833	WASHER	1				
36	104833	FILLER CAP FRONT (98 DIA)	2				
35	104833	G.A. OF WING	1				
34	104833	PRESSURE HEAD COVER	1				
33	104833	PICKETING RING	2				
32	104833	BRASS WAXED THREAD	2				
31	104833	ADJUSTING PLUG	4				
30	104833	BOLT	2				
29	104833	SPLIT PIN	4				
28	104833	WASHER	4				
27	104833	LOCKING WIRE 2.5 SW.G	2				
26	104833	BOLT	2				
25	104833	BOLT	2				
24	104833	SLOTTED NUT	6				
23	104833	WASHER	12				
22	104833	BOLT	4				
21	104833	SPLIT PIN	14				
20	104833	SLOTTED NUT	6				
19	104833	WASHER	14				
18	104833	ADJUSTING SCREW	2				
17	104833	NUT	2				
16	104833	SPRING WASHER	2				
15	104833	RD HD SCREW	2				
14	104833	JURY STRUT CLAMP-REAR	2				
13	104833	BOLT	4				
12	104833	JURY STRUT ASSY	1				
11	104833	EYE BOLT-REAR	2				
10	104833	EYE BOLT-FRONT (9/16 DIA)	2				
9	104833	WING BAND	1				
8	104833	FOOT STEP	1				
7	104833	ASSY OF PROT HD & JURY STRUT	1				
6	104833	CLAMP	2				
5	104833	REAR LIFT STRUT	2				
4	104833	FRONT LIFT STRUT	2				
3	104833	CLIP	1				
2	104833	G.A. WING	1				
1	104833	FINAL FUSELAGE ASSY	1				

DETAIL F
ADHESIVE TAPE MAY BE USED AS PICKING BETWEEN STRUTS & CLIPS IF FOUND TO BE NECESSARY.

DETAIL E
FRONT SPAR & LIFT STRUT FITTING.
25 UNDER BOLT HEAD & NUT AND NUT
26 DRILL NUT FOR SPLIT PIN

DETAIL D
FRONT SPAR & LIFT STRUT FITTING.
25 UNDER BOLT HEAD & NUT AND NUT
26 DRILL NUT FOR SPLIT PIN

DETAIL C
LIFT STRUT FITTINGS ON SPARS MUST NOT BE DISTORTED BY OVERTIGHTENING OF BOLTS. THE NEW A/C TYPE J5V WILL BE FURTHER DESIGNATED BY 150 OR 160 AS APPROPRIATE TO INDICATE THE HP OF THE ENGINE FITTED.

DETAIL B
FUSELAGE BOTTOM LONGERON
SHOCK TRUSS MEMBERS
LIFT STRUT FITTING ON FUSELAGE MUST NOT BE DISTORTED BY OVERTIGHTENING OF BOLT

DETAIL A
SHOWING CONNECTION FOR PITOT LINES IN WING TO PITOT LINES ON JURY STRUT

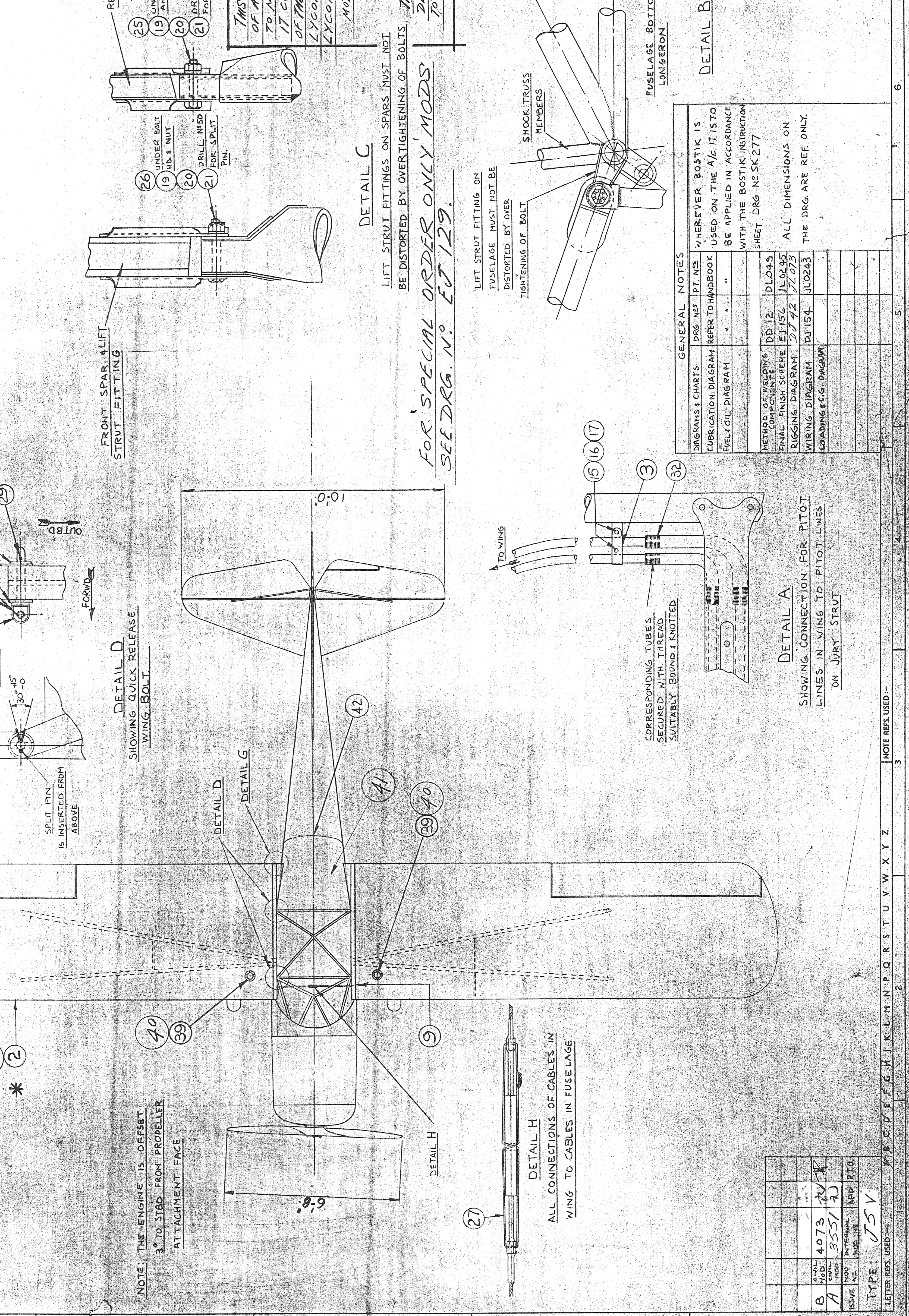
DETAIL G
WHEN ASSEMBLING WING BANDS IT IS NECESSARY TO FORM THE TRAILING EDGE FIRST, MAKING SURE THAT AFTER BENDING THE HOLE IN THE BAND IS IN ALIGNMENT WITH THE CLAMPS. THIS IS ESSENTIAL IN ORDER TO BE ABLE TO INSERT A SCREWDRIVER FOR TIGHTENING THE ADJUSTING SCREW ITEM 18

DETAIL H
NOTE: THE ENGINE IS OFFSET 3" TO STARBOARD FROM PROPELLER ATTACHMENT FACE

GENERAL NOTES
1. DIAGRAMS & CHARTS REFER TO DRAWING SHEETS
2. WHEREVER BOSTIK IS USED ON THE A/C IT IS TO BE APPLIED IN ACCORDANCE WITH THE BOSTIK INSTRUCTION SHEET DRG NO SK-277
3. ALL DIMENSIONS ON THE DRG ARE REF ONLY.
4. METHOD OF WELDING COMPONENTS DD-12 DLO-5
5. FINAL FINISH SCHEME EJ-156 JL-02-45
6. RIGGING DIAGRAM DR-42 JL-02-75
7. LOADINGS & C.G. DIAGRAM DL-154 JL-02-43

FOR SPECIAL ORDER ONLY MODS SEE DRG. NO. ET 129.

THIS MODIFICATION CARRIES THE CONVERSION OF AUSTER MODELS J5B, J5C, J5D, J5E, J5F, J5G, J5H, J5I, J5J, J5K, J5L, J5M, J5N, J5O, J5P TO MODEL J5 V. IT CONSISTS OF THE INSTALLATION OF EITHER OF THE FOLLOWING ENGINES TO ORDER: LYCOMING MODEL O-320-A22B, 150 HP. LYCOMING MODEL O-320-B22B, 160 HP. MOD. NO. 3551 PARTS: 3551 PART C, J5V TO J5V, 3551 PART D, J5V TO J5V.



ITEM	PART NO.	DESCRIPTION	QTY	UNIT	SCALE	DATE	BY
43	104833	INST. OF CG DATA CARD & HOLDER	1				
42	104833	CG DATA CARD	1				
41	104833	700L KIT	1				
40	104833	FILLER CAP 89/87 OCTANE	2				
39	104833	FILLER CAP 91/96 OCTANE	2				
38	104833	WASHER	1				
37	104833	WASHER	1				
36	104833	FILLER CAP FRONT (98 DIA)	2				
35	104833	G.A. OF WING	1				
34	104833	PRESSURE HEAD COVER	1				
33	104833	PICKETING RING	2				
32	104833	BRASS WAXED THREAD	2				
31	104833	ADJUSTING PLUG	4				
30	104833	BOLT	2				
29	104833	SPLIT PIN	4				
28	104833	WASHER	4				
27	104833	LOCKING WIRE 2.5 SW.G	2				
26	104833	BOLT	2				
25	104833	BOLT	2				
24	104833	SLOTTED NUT	6				
23	104833	WASHER	12				
22	104833	BOLT	4				
21	104833	SPLIT PIN	14				
20	104833	SLOTTED NUT	6				
19	104833	WASHER	14				
18	104833	ADJUSTING SCREW	2				
17	104833	NUT	2				
16	104833	SPRING WASHER	2				
15	104833	RD HD SCREW	2				
14	104833	JURY STRUT CLAMP-REAR	2				
13	104833	BOLT	4				
12	104833	JURY STRUT ASSY	1				
11	104833	EYE BOLT-REAR	2				
10	104833	EYE BOLT-FRONT (9/16 DIA)	2				
9	104833	WING BAND	1				
8	104833	FOOT STEP	1				
7	104833	ASSY OF PROT HD & JURY STRUT	1				
6	104833	CLAMP	2				
5	104833	REAR LIFT STRUT	2				
4	104833	FRONT LIFT STRUT	2				
3	104833	CLIP	1				
2	104833	G.A. WING	1				
1	104833	FINAL FUSELAGE ASSY	1				

FOR SPECIAL ORDER ONLY MODS SEE DRG. NO. ET 129.

LETTER REFS. USED: A-Z

NOTE REFS. USED: 1-3