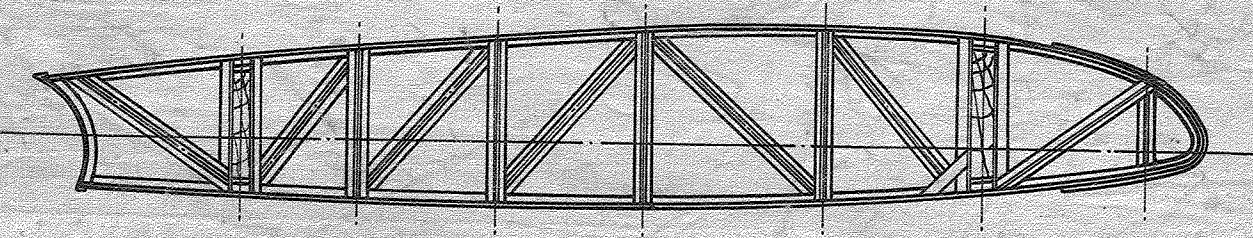
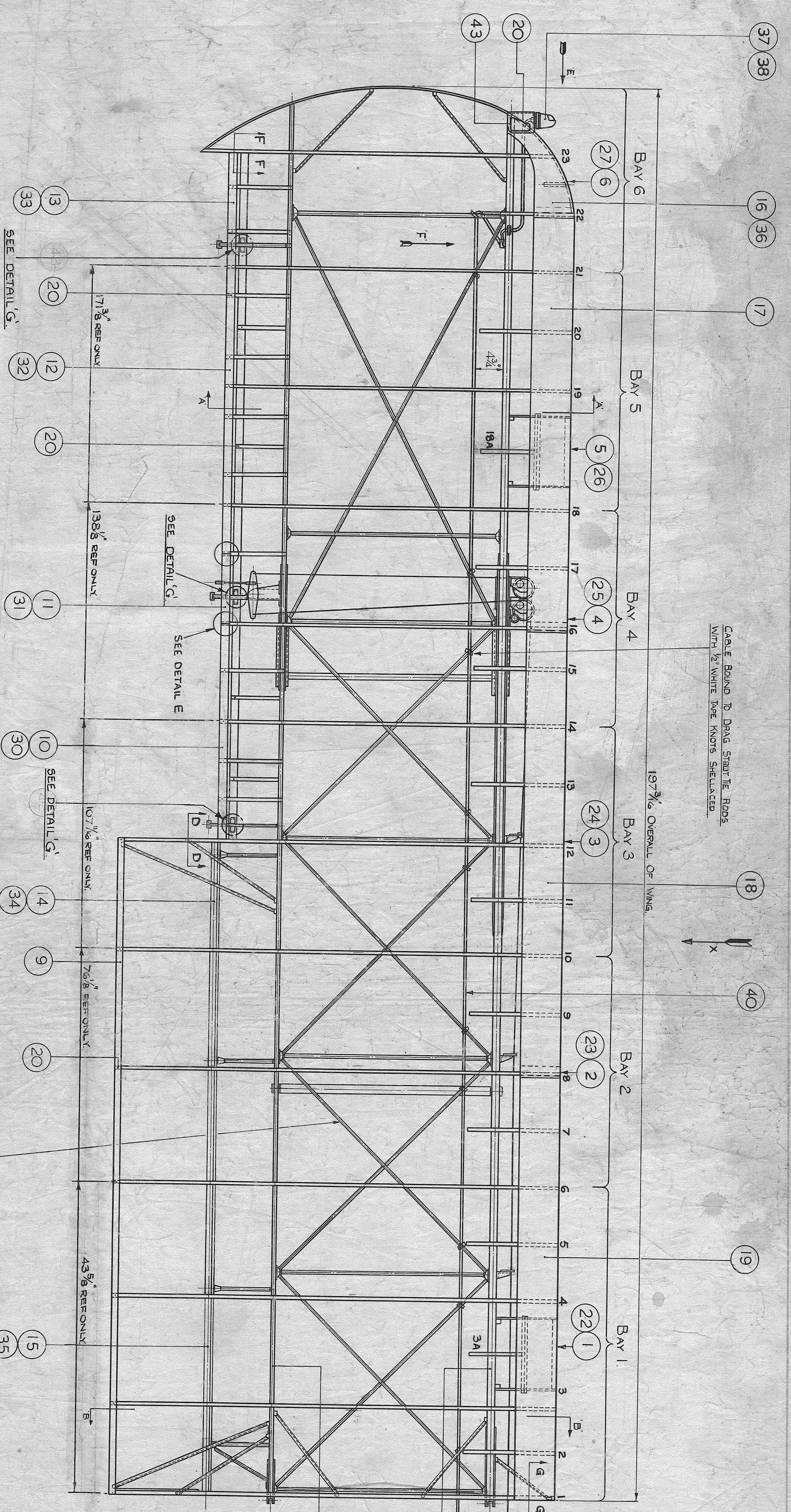


THIS DRAWING IS THE PROPERTY OF THE AIRCRAFT CORPORATION AND IS NOT TO BE REPRODUCED OR TRANSMITTED IN ANY FORM OR BY ANY MEANS, ELECTRONIC OR MECHANICAL, INCLUDING PHOTOCOPYING, RECORDING, OR BY ANY INFORMATION STORAGE AND RETRIEVAL SYSTEM, WITHOUT THE WRITTEN PERMISSION OF THE AIRCRAFT CORPORATION.



SECTION A-A

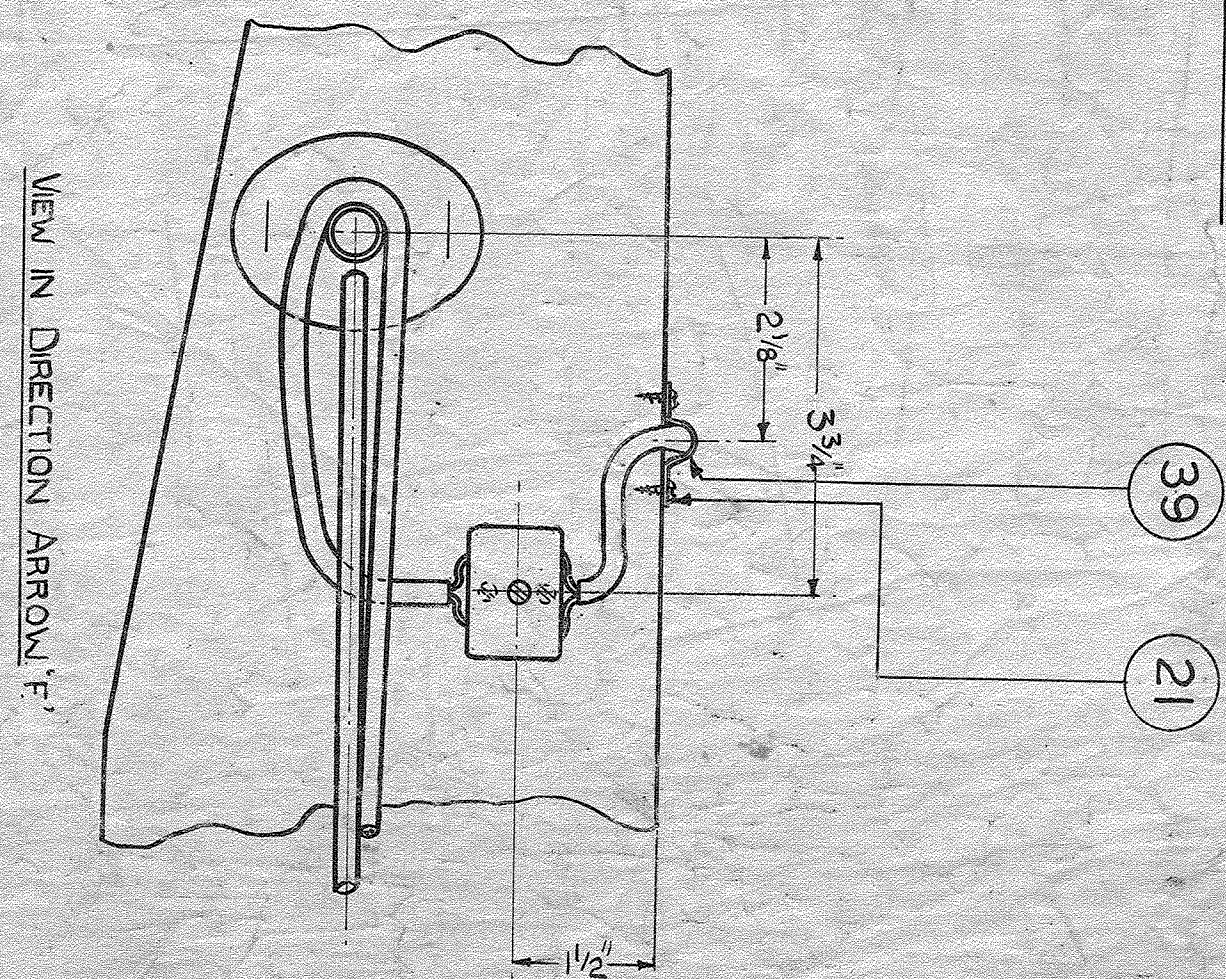


CABLE BOUND TO DRAG STRUTS ROOFS WITH 1/2 WHITE PAKE KNOTS SHELLACED.

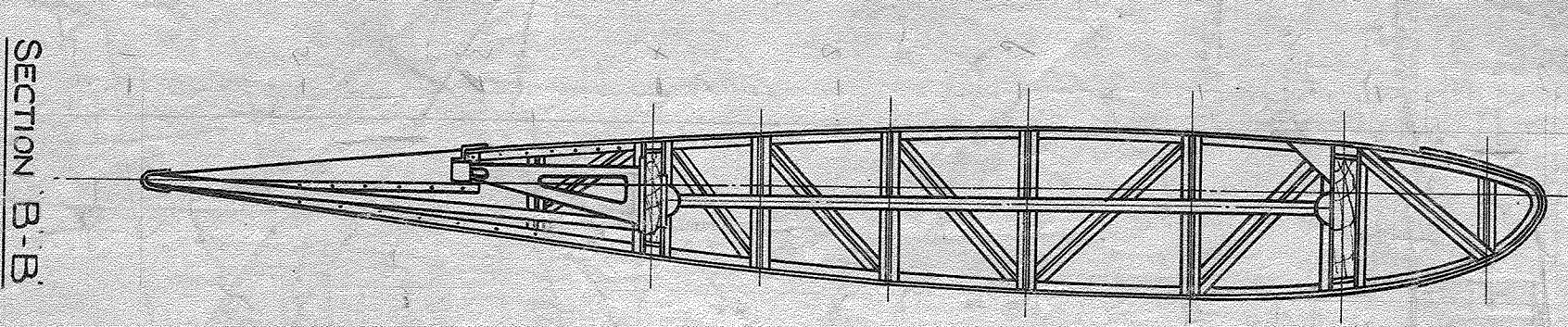
19 3/16" OVERALL OF WING.

ALLOW 1/8" FOR FOLDING OVER BOOM.

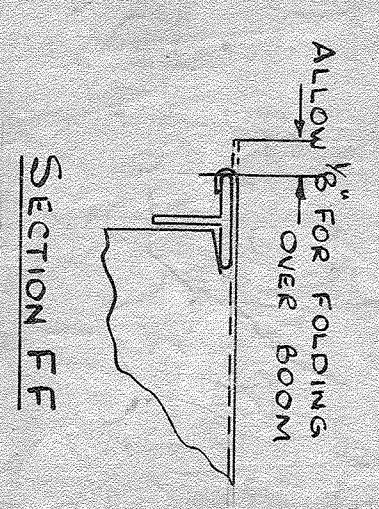
SECTION G-G



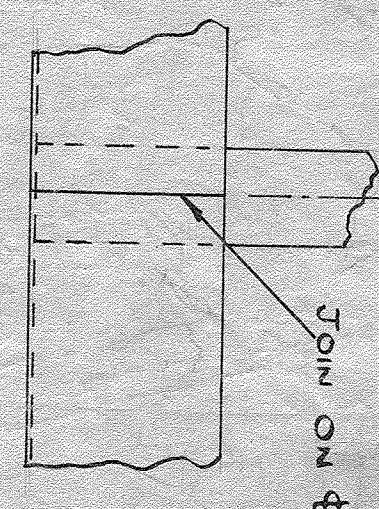
VIEW IN DIRECTION OF ARROW 'F'



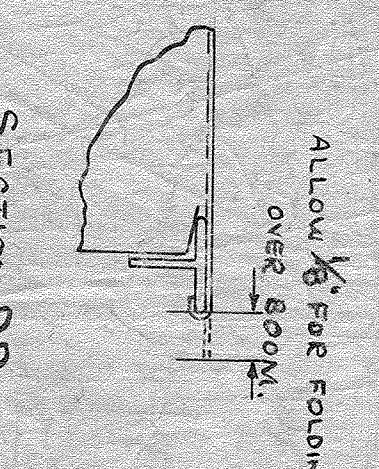
SECTION B-B



SECTION FF



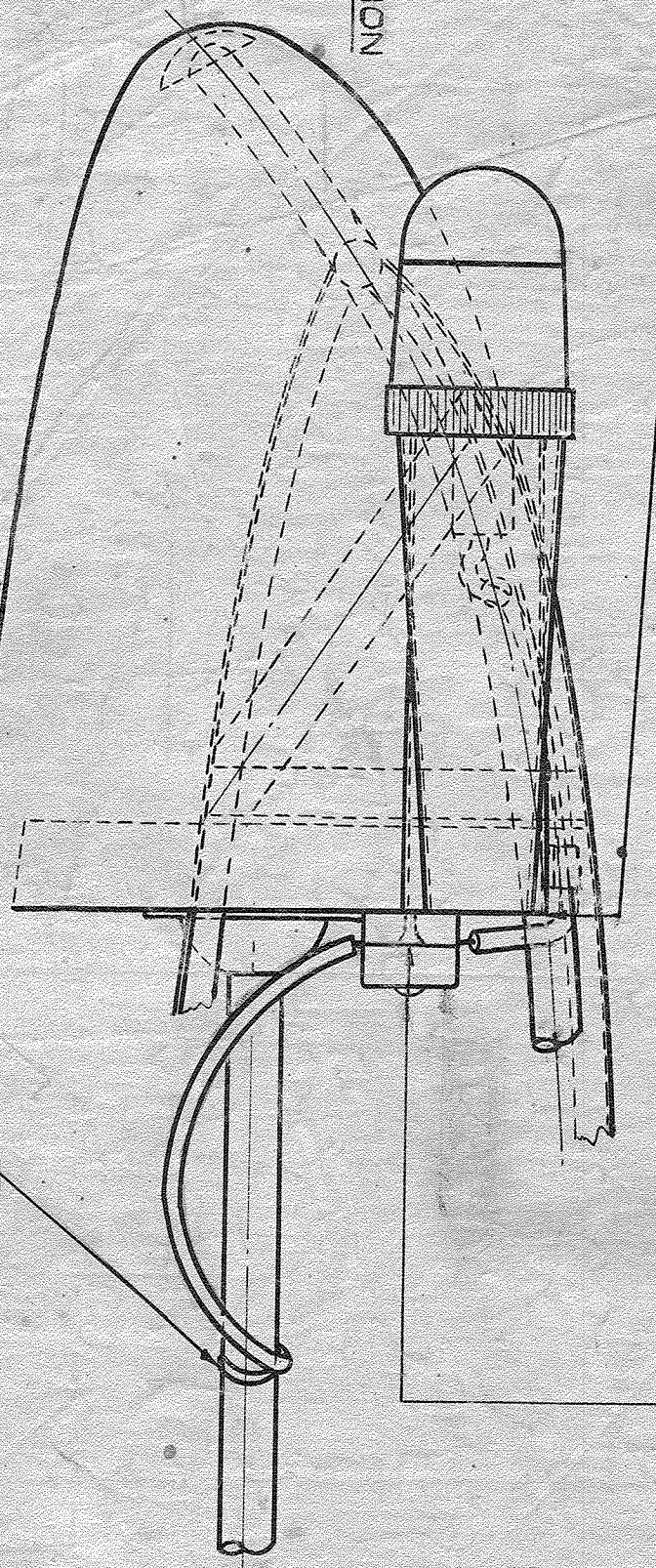
DETAIL E



SECTION DD

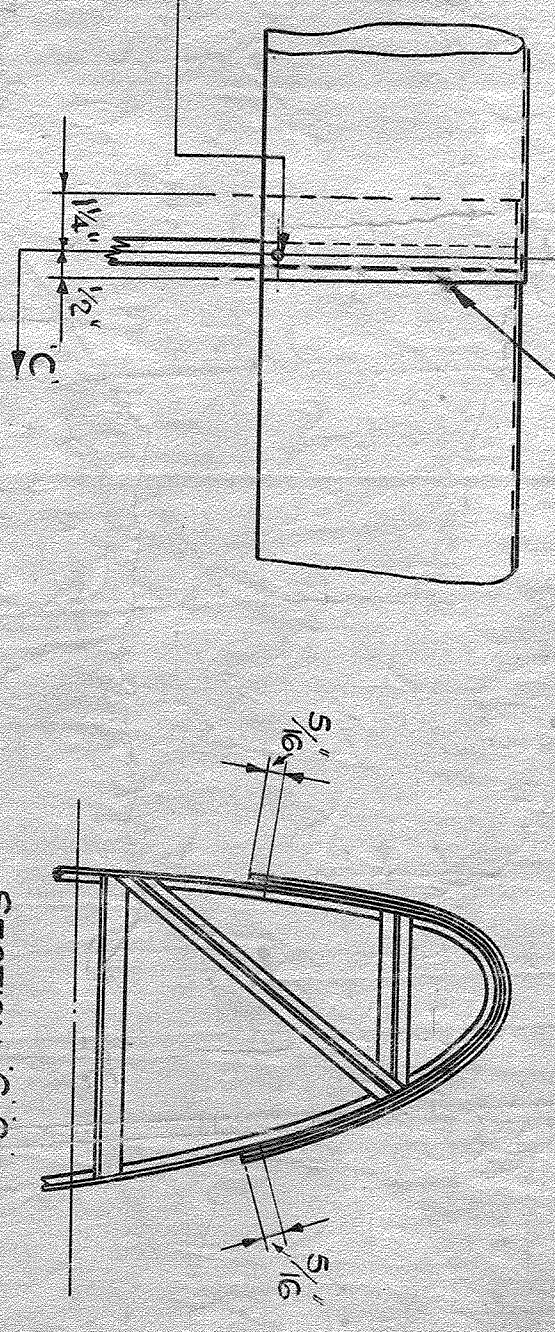
NOTE: THE THREADS OF ALL THE BOLTS ARE TO BE WELL OILED BEFORE ASSEMBLY AND THE WINDS OF THE TIE BOLTS TO BE WELL CORDED WITH IMPREG. SLUSH AFTER ASSEMBLY.

REAR EDGE OF BRACKET
FITS FLUSH WITH REAR FACE
OF FRONT SPAR



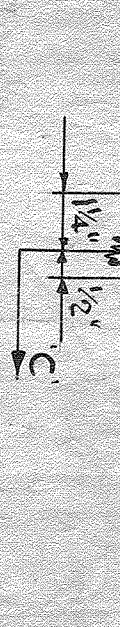
VIEW IN DIRECTION OF ARROW 'E'

VIEW IN DIRECTION OF ARROW 'X'



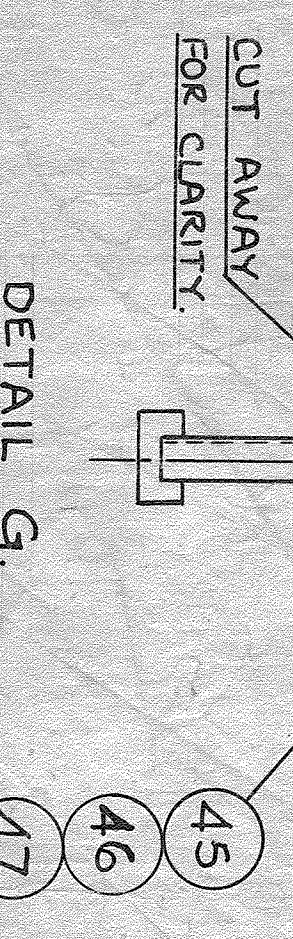
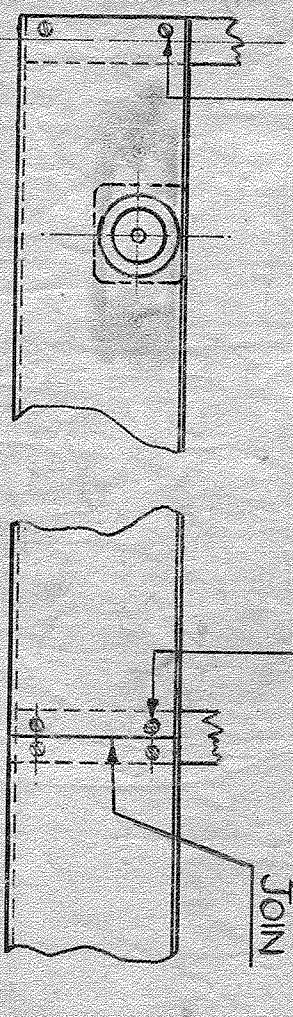
SECTION C-C

CABLE BOUND WITH ITEM 41
KNOTS TO BE SHELLACED



TYPICAL VIEW SHOWING ATTACHMENT OF LEADING EDGE

DETAIL OF FIXINGS FOR ITEMS 14 & 15
SHOWING END ATTACHMENT
AND PARTICULARS OF JOIN



DETAIL G

PART NO GA 80264/L DRG NEGH33/L AS DRAWN
PART NO GA 80264/R DRG NEGH33/R OPR HAND

PACKER TO BE FITTED TO SHROUD WITH 4 OFF ITEM 42 AND THEN BOLTED TO AILERON BRACKET. DRILL ONE HOLE NO. 21 DRILL RIGHT THROU & CLIP .25" X 90° IN SHROUD AND PACKER FOR BOLT.

NOTE THIS DRG IS REFERENCED ON EG.1

SCALE	1-3/4, 1/2
PROJECTIVE	ORTHOGONAL
TEMPERATURE	EGH 37
WING FRAME ASSEMBLY OF	

REFERENCE	EGH 19
DATE	1-1-42
BY	EGH 37
CHECKED	EGH 37
APPROVED	EGH 37
REVISION	
NO.	
DESCRIPTION	
DATE	
BY	
CHECKED	
APPROVED	