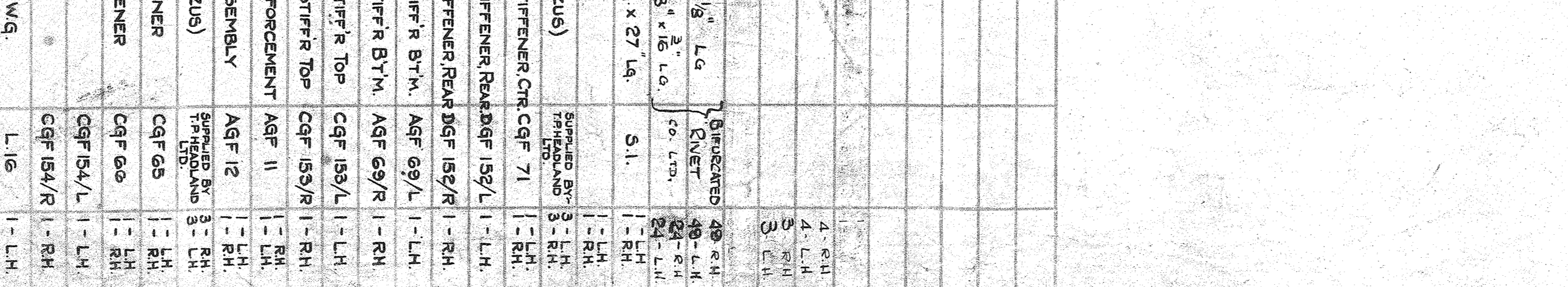
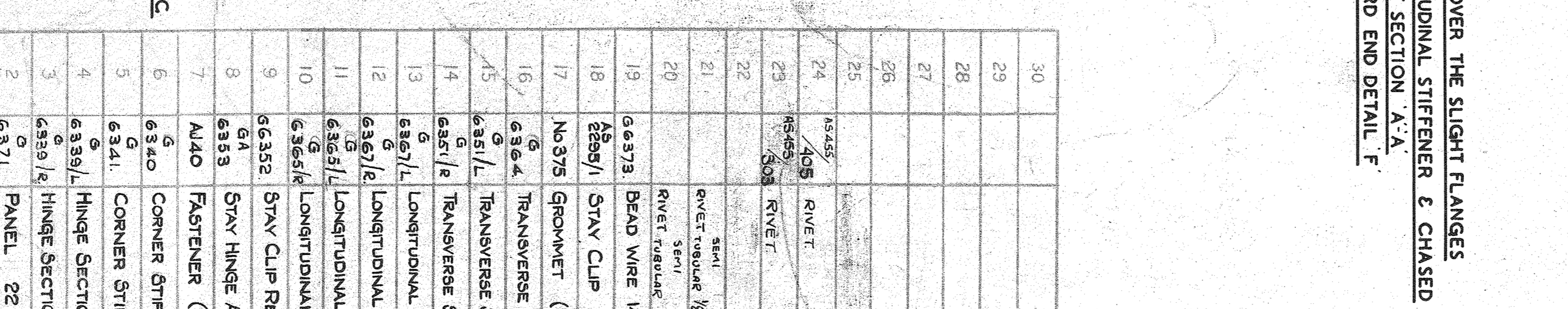
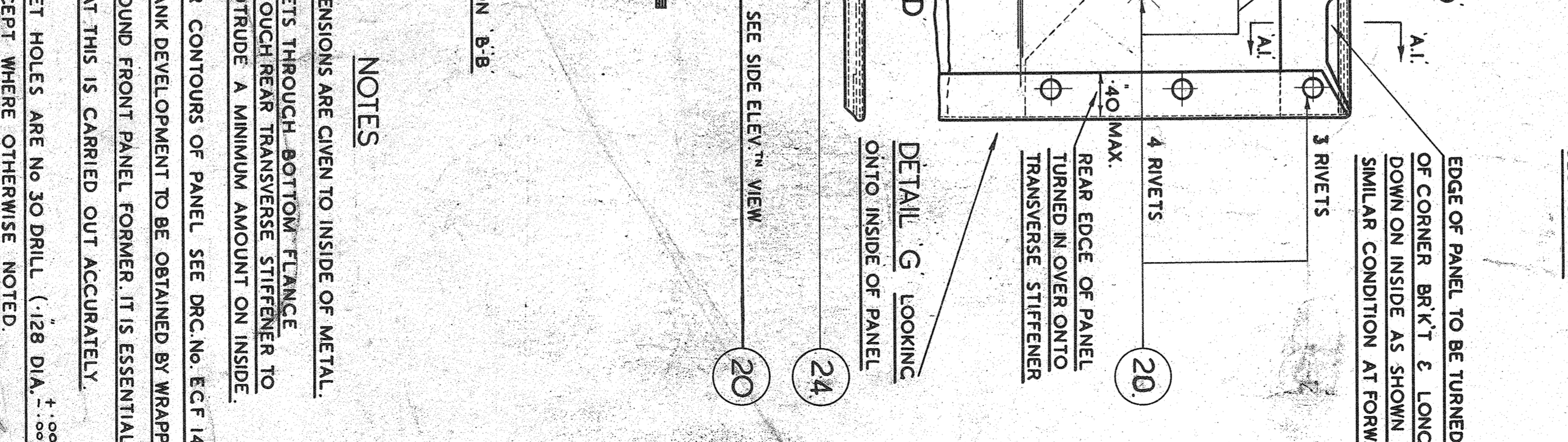
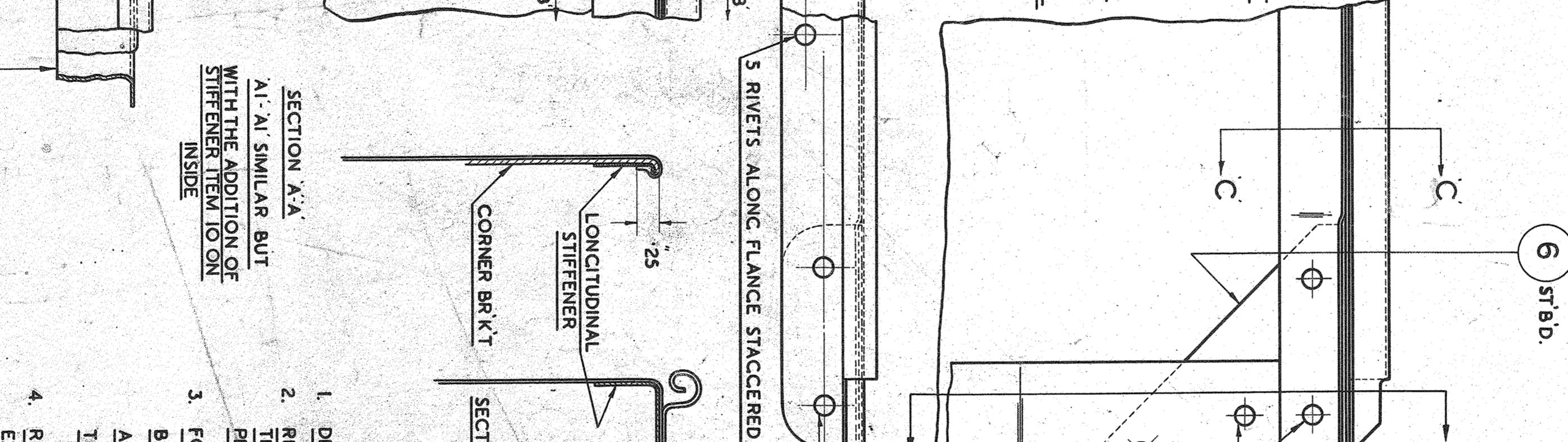
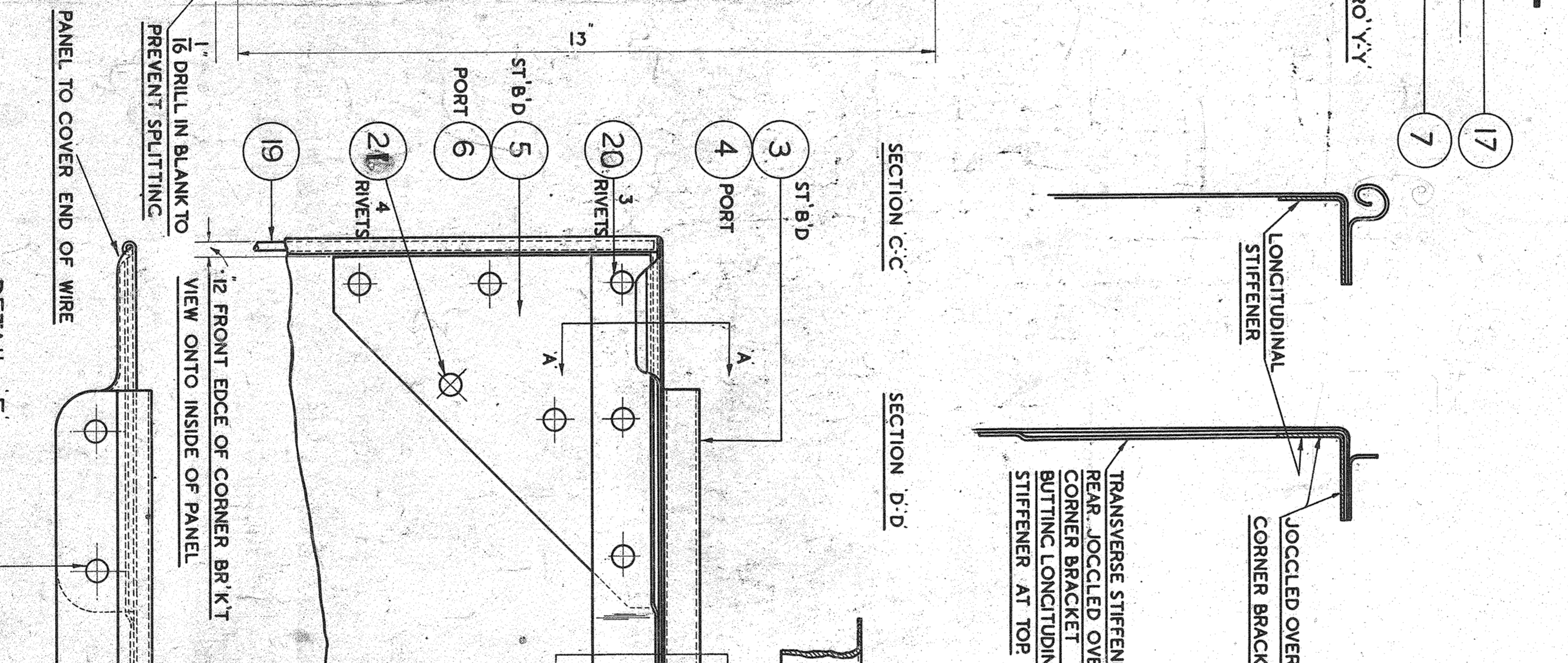
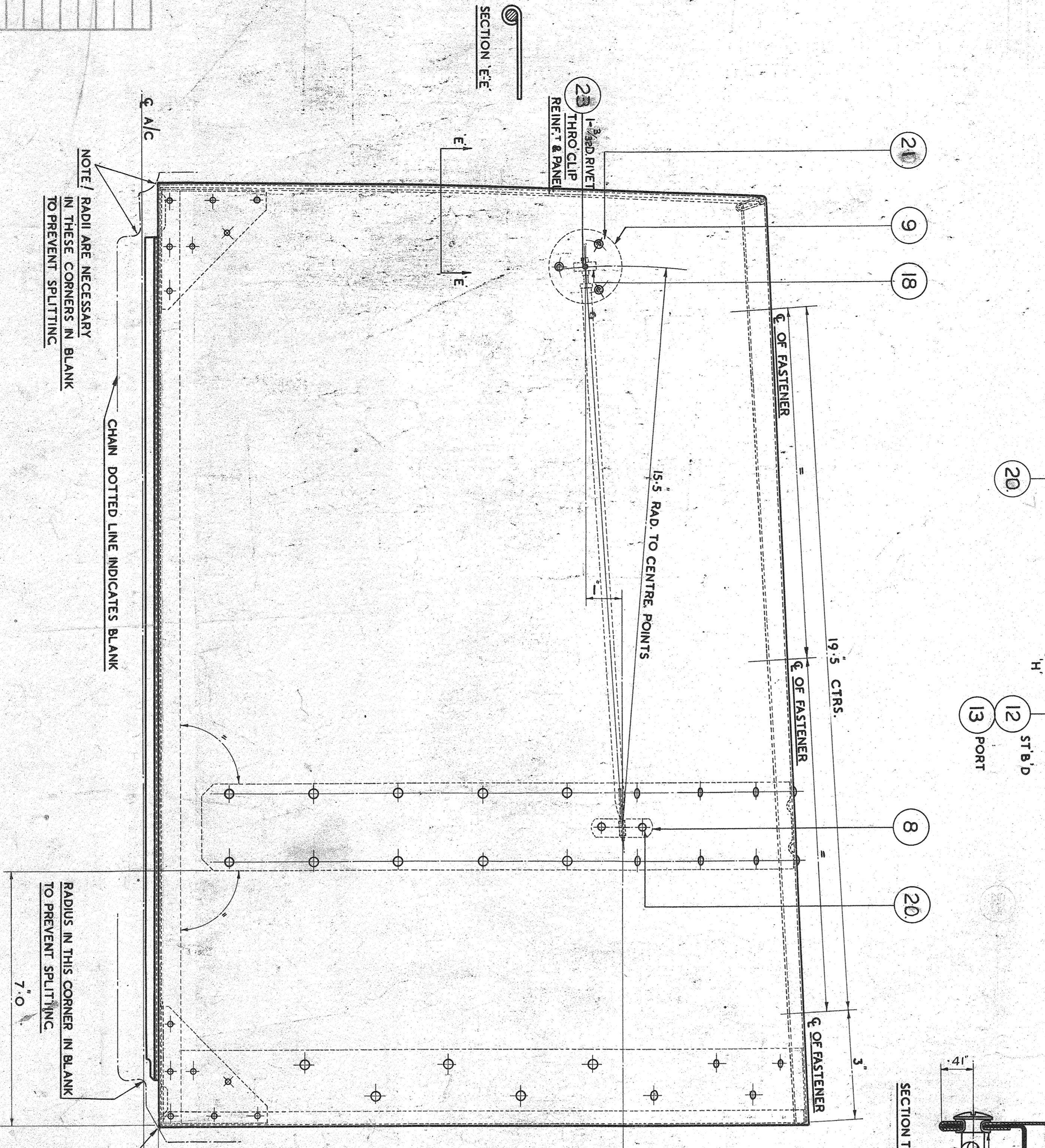
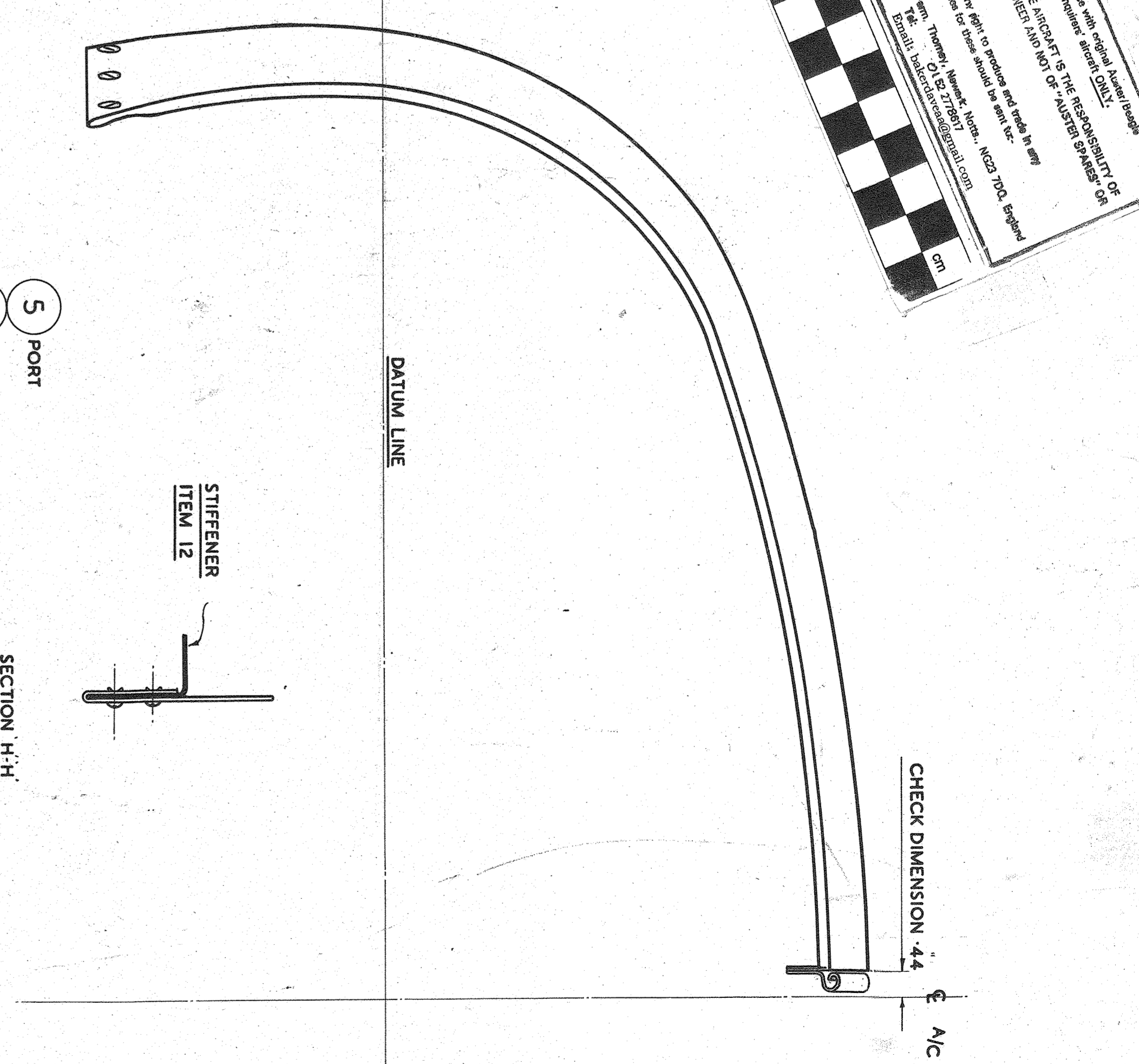
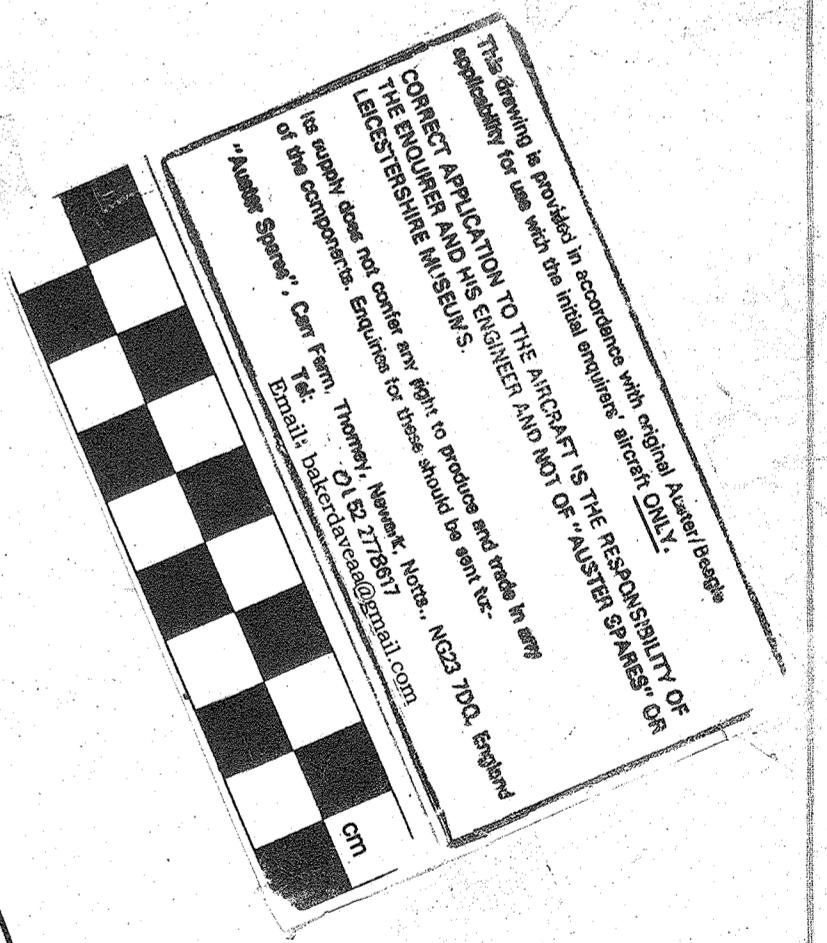
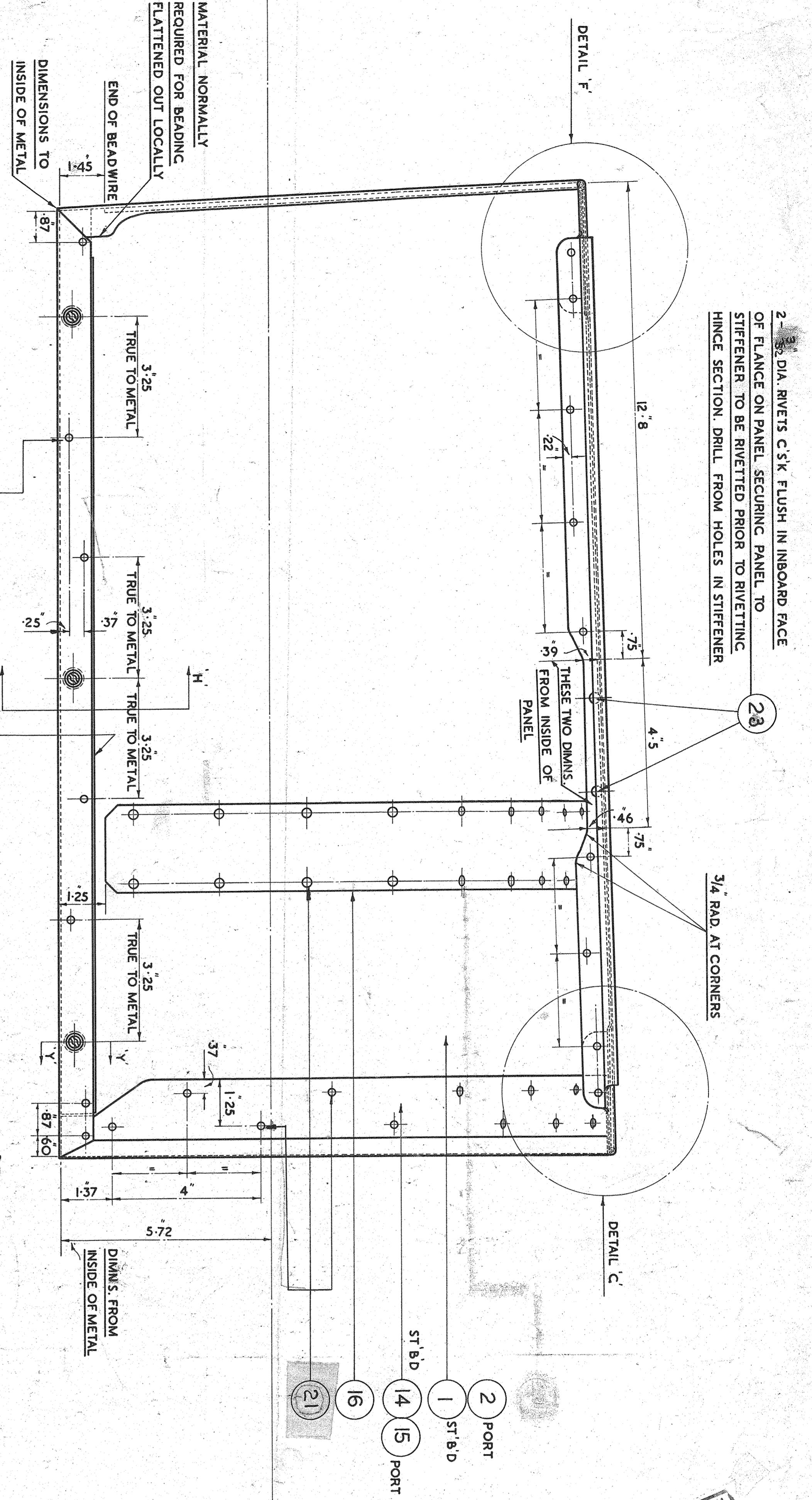


1. OF NOT SCALE DRAWING
2. REVISION PRODUCTION IS 53110
3. TOLERANCES ON DIMENSIONS ARE ±.005
4. LEAD DIMENSIONS ABOUT THIS OFFICE BEFORE COMMENCING OPERATIONS



2	AMGR	142	3	1/1
1	LOC	106	3	1/1
2	LOC	100	3	1/1
3	RE-DRAWN	973	3	1/1
4	RE-DRAWN	FLC	3	1/1
5	RE-DRAWN	FLC	3	1/1
6	RE-DRAWN	FLC	3	1/1
7	RE-DRAWN	FLC	3	1/1
8	RE-DRAWN	FLC	3	1/1
9	RE-DRAWN	FLC	3	1/1
10	RE-DRAWN	FLC	3	1/1
11	RE-DRAWN	FLC	3	1/1
12	RE-DRAWN	FLC	3	1/1
13	RE-DRAWN	FLC	3	1/1
14	RE-DRAWN	FLC	3	1/1
15	RE-DRAWN	FLC	3	1/1
16	RE-DRAWN	FLC	3	1/1
17	RE-DRAWN	FLC	3	1/1
18	RE-DRAWN	FLC	3	1/1
19	RE-DRAWN	FLC	3	1/1
20	RE-DRAWN	FLC	3	1/1
21	RE-DRAWN	FLC	3	1/1
22	RE-DRAWN	FLC	3	1/1
23	RE-DRAWN	FLC	3	1/1
24	RE-DRAWN	FLC	3	1/1

NOTE: RADIUS ARE NECESSARY IN THESE CORNERS IN BLANK TO PREVENT SPLITTING

CHAN: DOTTED LINE INDICATES BLANK

RADIUS IN THIS CORNER IN BLANK TO PREVENT SPLITTING 7.0

PART N° GA 6337/a EGF 3/R STARBOARD AS DRAWN

PART N° GA 6337/L EGF 3/L PORT OP. HAND

SECTION A-A: ALL: SIMILAR BUT WITH THE ADDITION OF STIFFENER ITEM 12 ON INSIDE

SECTION B-B: CORNER BRACKET

SECTION C-C: 1/2\"/>

SECTION D-D: 3 RIVETS ALONG FLANGE STAGGERED - SEE SIDE ELEV. VIEW

SECTION E-E: 19.5\"/>

SECTION F-F: 1\"/>

SECTION G-G: 40 MAX. 4 RIVETS

SECTION H-H: STIFFENER ITEM 12

SECTION I-I: 1\"/>

- NOTES
1. DIMENSIONS ARE GIVEN TO INSIDE OF METAL.
 2. RIVETS THROUGH BOTTOM FLANGE THROUGH REAR TRANSVERSE STIFFENER TO PROTRUDE A MINIMAL AMOUNT ON INSIDE.
 3. FOR CONTOURS OF PANEL SEE DRC. NO. EGF 142 AROUND FRONT PANEL FORMER. IT IS ESSENTIAL BLANK DEVELOPMENT TO BE OBTAINED BY WRAPPING THAT THIS IS CARRIED OUT ACCURATELY.
 4. RIVET HOLES ARE NO. 30 DRILL (1.28 DIA. ±.004) EXCEPT WHERE OTHERWISE NOTED.

NO.	REV.	DESCRIPTION	DATE	BY	CHKD.
1	1	INITIAL			
2	2	INITIAL			
3	3	INITIAL			
4	4	INITIAL			
5	5	INITIAL			
6	6	INITIAL			
7	7	INITIAL			
8	8	INITIAL			
9	9	INITIAL			
10	10	INITIAL			
11	11	INITIAL			
12	12	INITIAL			
13	13	INITIAL			
14	14	INITIAL			
15	15	INITIAL			
16	16	INITIAL			
17	17	INITIAL			
18	18	INITIAL			
19	19	INITIAL			
20	20	INITIAL			
21	21	INITIAL			
22	22	INITIAL			
23	23	INITIAL			
24	24	INITIAL			
25	25	INITIAL			
26	26	INITIAL			
27	27	INITIAL			
28	28	INITIAL			
29	29	INITIAL			
30	30	INITIAL			

SCALE: 1/2", 1/4"

TAYLORCRAFT AEROPROFINES (ENGLAND) LTD. LEICESTER

OW/CAT/UNC

FL/CLARKE

EM/DOMINNEY

DESIGN/100

PART N° GA 6337/a

TOP COWL ASSEMBLY

DRG. N° EGF 3/L/R