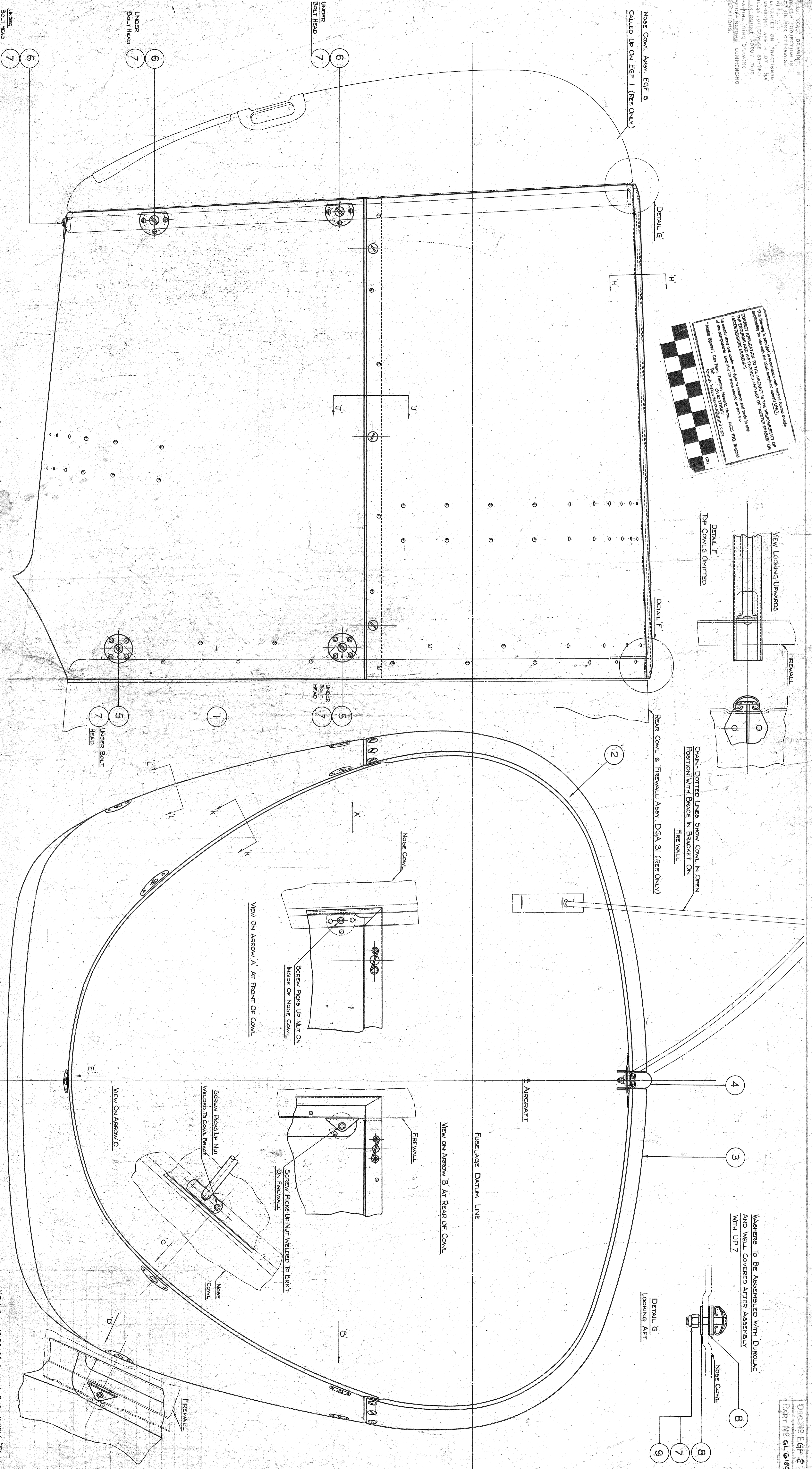
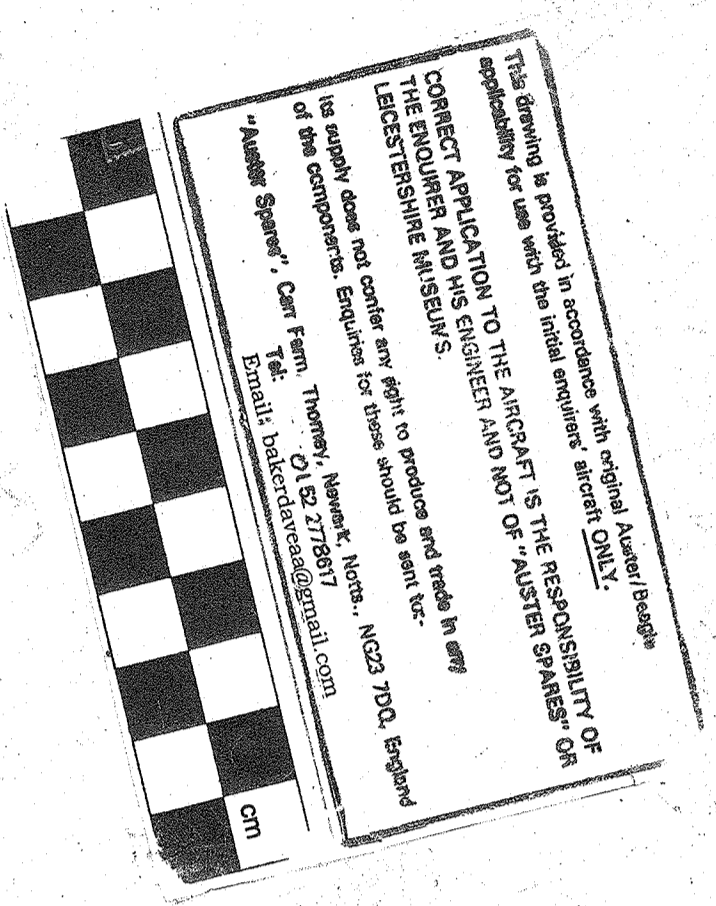
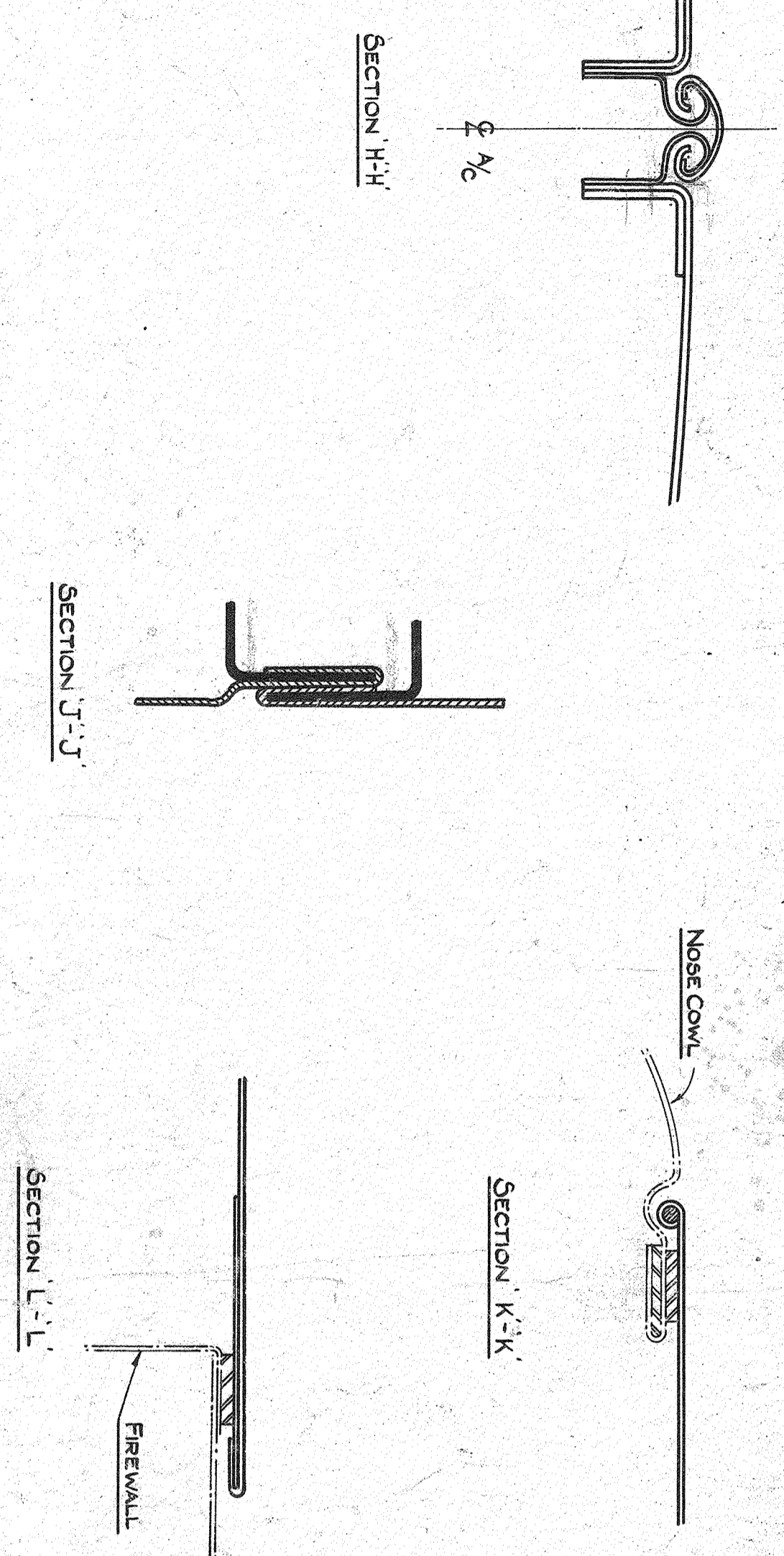


NOT SCALE DRAWING  
 FINISH PROJECTION IS  
 UNLESS OTHERWISE  
 SPECIFIED ON PRACTICAL  
 DIMENSIONS ARE ON - 1/8"  
 UNLESS NOTED TO THE  
 CONTRARY. ALL DIMENSIONS  
 CHANGING, FINE DRAWING  
 OPERATIONS COMMENCING  
 OPERATIONS.



ITEM NO	DESCRIPTION	QTY	UNIT
1	392 2541	2	1/2
2	1066	3	1/2
3	1042	3	1/2
4	923	3	1/2
5	RC-BRANK	1	1/2
6	RC-BRANK	1	1/2
7	RC-BRANK	1	1/2
8	RC-BRANK	1	1/2
9	RC-BRANK	1	1/2
10	RC-BRANK	1	1/2



- NOTE / TOP PANELS ASSEMBLED BY :-
1. Along Hinge Section (Item 4) Along Sections On Top Cowling From Front Of Panels.
  2. Placing Panels On 1/2 so That Bracket At Top Centre Of Firewalls (Detail F) Inside Top Section Of Hinge (Item 4) (Detail J).
  3. Placing Stud At Front Of Hinge In Hole In Top Centre Of Nose Cowling Adding Washers & Nut (See Detail G).

ITEM NO	DESCRIPTION	QTY	UNIT
10	Base Screw (Premier Screw Co)	4	
9	CP1 SIMONDO NUT	1	
8	6/8 WASHER	4	
7	5/8 C SPRING WASHER	10	
6	1/2 RD HD BOLT	5	
5	1/2 RD HD BOLT	4	
4	HINGE SECTION	1	
3	6/8 TOP COWL - Part	1	
2	6/8 TOP COWL - Part	1	
1	6/8 BOTTOM COWL	1	

ITEMS MARKED WITH \* ARE ALTERNATIVES

SCALE: HALF FULL SIZE

PROTECTIVE TREATMENT: EGA-1

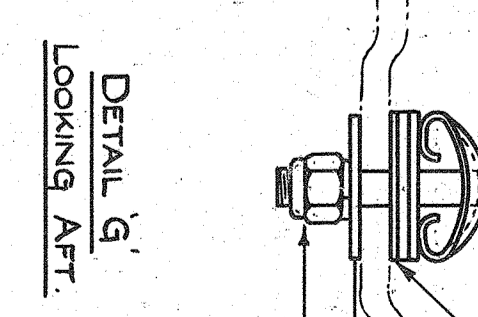
TAYLORCRAFT AIRCRAFT (ENGLAND) LTD, LEICESTER

TITLE: ASSEMBLY OF ENGINE COWLINGS

DRWING: GF 2

DRG NO EGF 2  
 PART NO 61180

WASHERS TO BE ASSEMBLED WITH DURALUC AND WELL COVERED AFTER ASSEMBLY WITH UP 7



DETAIL G  
 Looking Aft