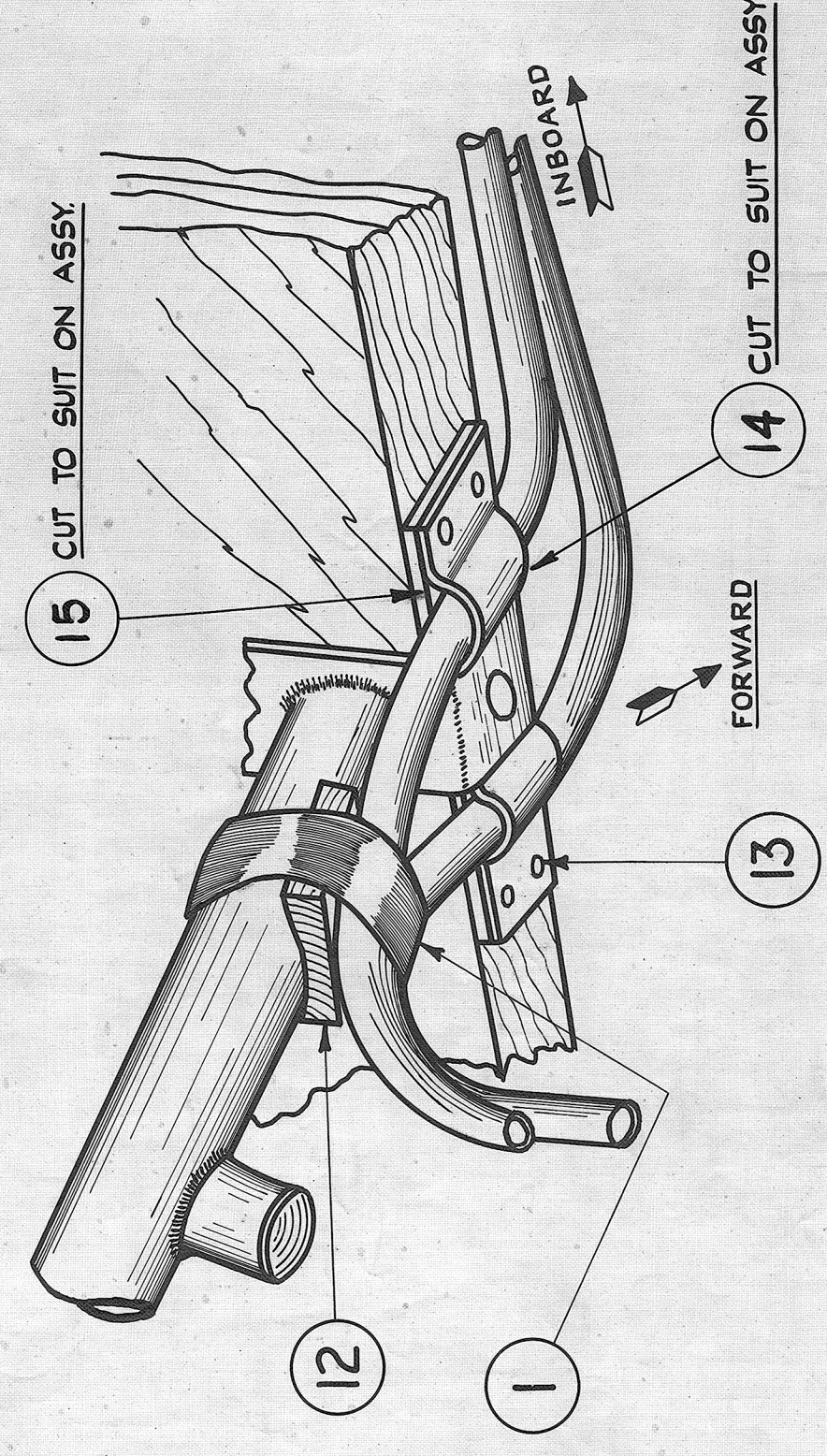
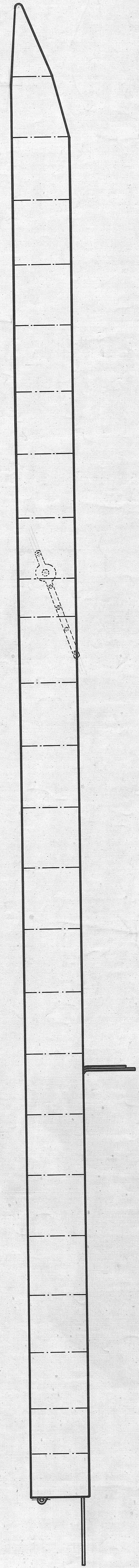
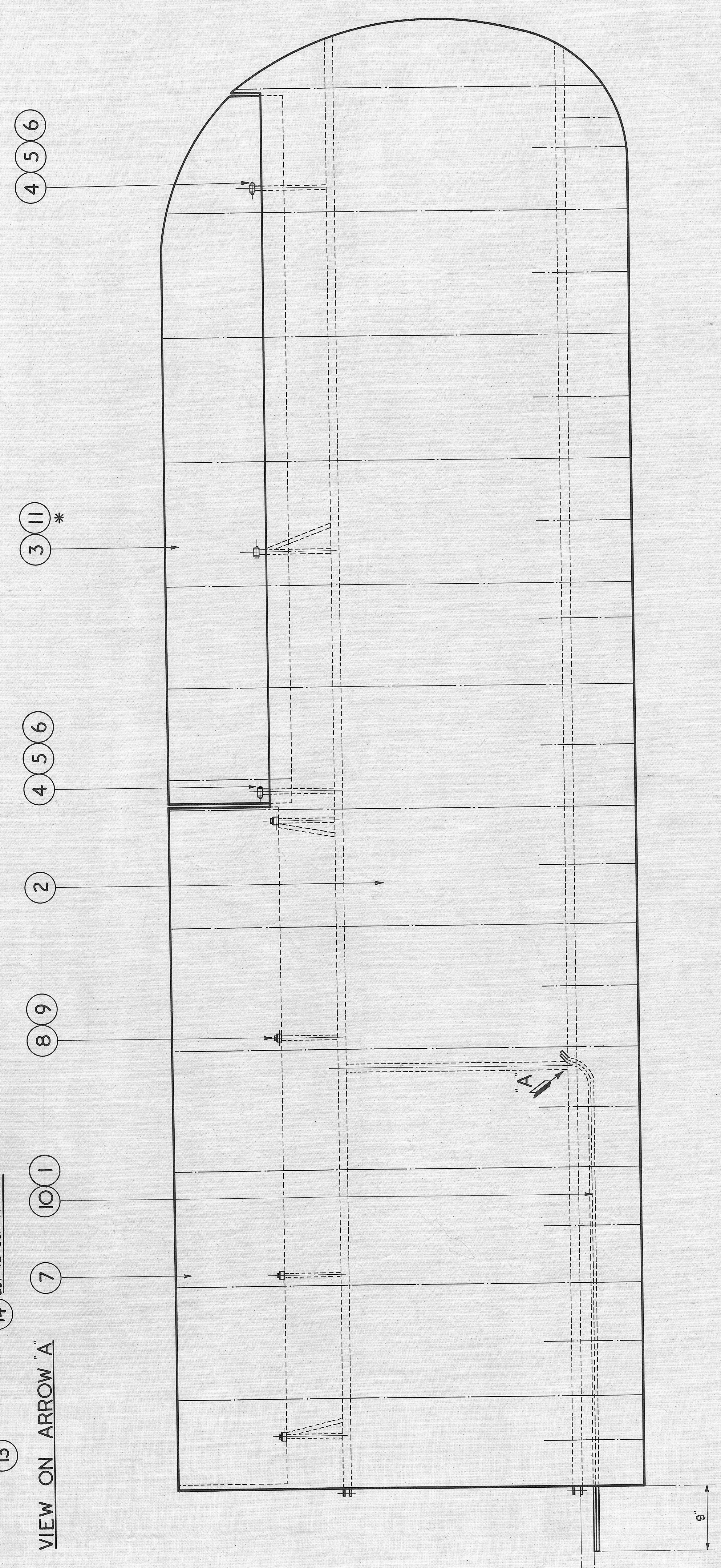


1. DO NOT SCALE DRAWING
2. ENGLISH PROJECTION IS USED UNLESS OTHERWISE STATED
3. DIMENSIONS ON DRAWING UNLESS OTHERWISE STATED
4. IF IN DOUBT ABOUT THIS DRAWING, REFER TO THE DRAWING OPERATIONS.



FOR INTERCHANGEABILITY DATA AILERON TO WING SEE DRG. N° I.S.5.
FOR INTERCHANGEABILITY DATA FLAP TO WING SEE DRG. N° I.S.6.
THESE DRAWINGS ARE NOT TO BE USED FOR INSPECTION PURPOSES.



PART N° EA 80026/L. DRG. N° EEH 1/L AS DRAWN. PORT WITH ITEMS 1 AND 10.
PART N° EA 80026/R. DRG. N° EEH 1/R. OPP. HAND. STARBOARD WITHOUT ITEMS 1 AND 10.

* NOTE: ITEM 11 IS ALT. TO ITEM 3.

10	AM 2009	3	FLC
8	1282	3	FLC
7	1227	3	FLC
6	1191	3	FLC
5	1099	3	FLC
4	951	4	FLC
3	901	4	FLC
2	AM 901	3	JHP
1	AM 71	3	JHP
1	AM 26	3	JHP

MOD. INTERNAL APPL. RTO
ISSUE NO. MOD. NO. CLASS

TYPE: AUSTER.

FIG. N°	DESCRIPTION	MATERIAL	QTY.	REMARKS
15	STRIP .75 WIDE x 1/8 THICK x 3 1/2 L.	BRASS	1	
14	STRIP .75 WIDE x 1/8 THICK x 19 1/2 L.	BRASS	1	
13	WASHER 3/8" DIA. x 1/4" THICK x 1/4" COATED	BRASS	4	
12	1/4" THICK PAD.	FELT	1	OFF L.H.
11	FABRIC COVERING - AILERON	DJH 43/L	1	
10	TUBE.	AH 169	2	
9	SPRING WASHER.			
8	BOLT 1/4" B.S.F.			
7	LAYOUT OF FLAP.	EEH 77/L	1	
6	SPLIT PIN.			
5	WASHER.			
4	AILERON HINGE PIN.	AJH 44	2	
3	AILERON COVERING & FRAME ASBY.	DJH 47/L	1	
2	FABRIC COVERING - WING	EEH 48/L	1	
1	3/8" WIDE INSULATING TAPE (BLACK)			AS REQD.

Drawn: G.S. Checked: R.C.T. Part No: EA80026 1/4
Taylorcraft Aeroplanes (England) Ltd, Leicester. Approved: P.L.C. Part No: EA80026 1/4
Title: G.A. OF WING.