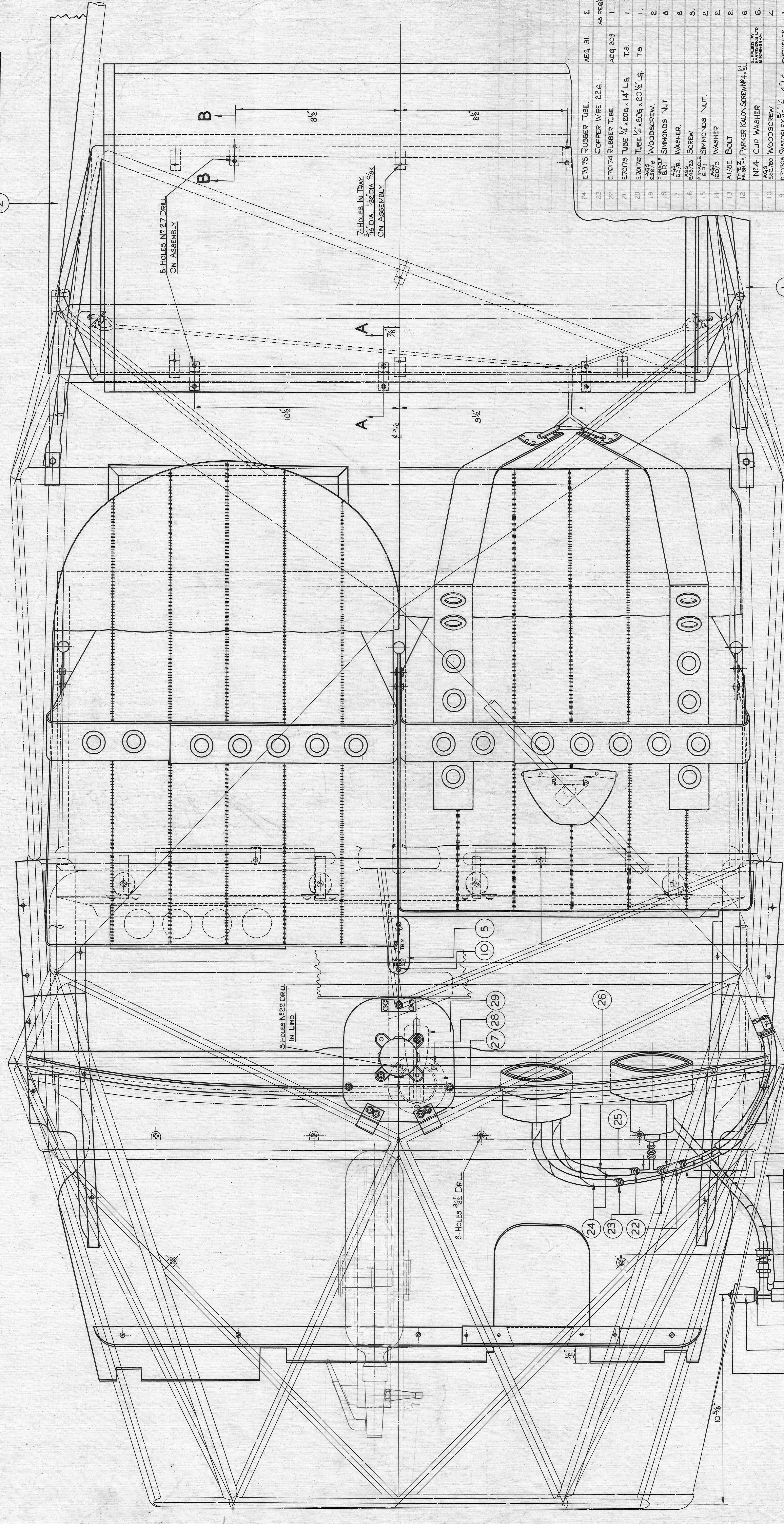
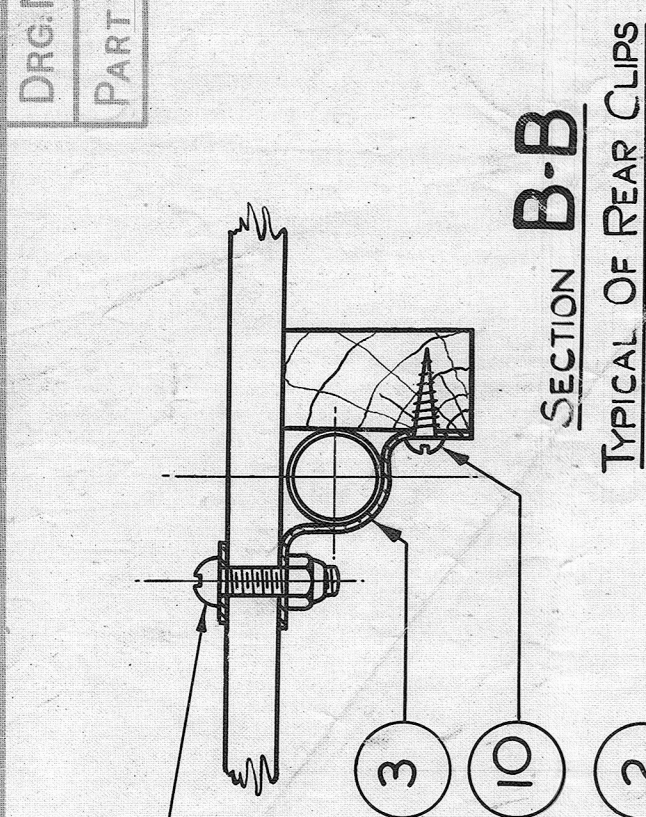
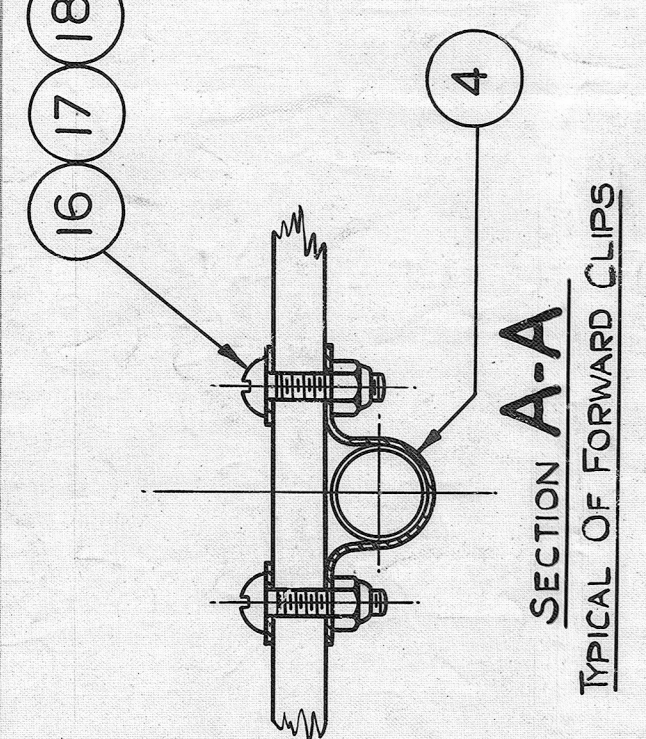


1. DO NOT SCALE DRAWING
 2. DIMENSIONS ARE TO BE USED UNLESS OTHERWISE STATED.
 3. TOLERANCES ON FRACTIONAL DIMENSIONS ARE .005" UNLESS OTHERWISE STATED.
 4. IF IN DOUBT ABOUT THIS DRAWING, RING DRAWING OFFICE BEFORE COMMENCING OPERATIONS.

DRG. NO. EDG.1, SH.3
 PART NO. EL 70727/3



REV.	BY	CHKD.	DATE	DESCRIPTION
17	AMJ	664	3	INTERNAL APPROV. RTD
18	MDJ	1043	3	
19	MDJ	1043	3	

NOTE: THIS DRG. IS FOR AUSTER MK III MACHINES ONLY.
 FOR FORWARD VIEW AUSTER MK III SEE SHEET NPI.
 SIDE 2
 AFT 4

ITEM NO.	DESCRIPTION	QTY.	UNIT
1	VEREY PISTOL N#4 Mk I#	1	
3	BOLT	3	
AGG 20	VEREY PISTOL HOLDER	AGG 20	
AS READ	BONDING BRAD		
AGG 88	PISTOL TUBE ALTIMETER PIPE LINE JOINT	AGG 88	
E E 3	PROTECTIVE		

ITEM NO.	DESCRIPTION	QTY.	UNIT
2	E 7075 RUBBER TUBE	AGG 131	AS READ
22	E 7074 RUBBER TUBE	AGG 203	1
21	E 7073 TUBE 1/4 x 20q x 14' Lg.	T 9	1
20	E 7076 TUBE 1/4 x 20q x 20 1/2 Lg.	T 9	1
19	WOODSCREW		2
18	SIMMONDS NUT		8
17	WASHER		8
16	SCREW		8
15	SIMMONDS NUT		2
14	WASHER		2
13	BOLT		2
12	PARKER KALON SCREW N#4 x 1/2		6
11	CUP WASHER		6
10	WOODSCREW		4
9	SYSTOFLEX 3/8 x 4 Lg.	SYSTOFLEX	1
8	SUPPORT WASHER		2
7	VENTURI MOUNTING BLOCK	ADG 143	1
6	INSTRUC'N PLATE IRM TAB	ADG 108	1
5	E 7009 CLIP	AEK 134	3
4	E 7008 CLIP	AEK 135	3
3	WING PIPER AT FLUS (STBC)	DEG 5/R	1
2	WING PIPER AT FLUS (PORT)	DEG 5/L	1

SCALE: 1-2
 TAYLORCRAFT AEROPLANES (ENGLAND) LTD. LEICESTER.
 TITLE: ASSEMBLY OF CABIN FITTINGS (PLAN VIEW)
 DRAWN BY: J. H. G. 3. 14
 CHECKED BY: S. L. 3. 14
 APPROVAL: [Signature]
 PART NO. EL 70727/3
 SHEET NO. 3
 NO. OF SHEETS: 6