

17									
16	J52359	CHANNEL					MAKE FROM SCOTT PART SUPPLIED WITH TAIL WHEEL.		1
15	STP1115	BUSH							1
14	SP-15-E	WASHER							1
13	A25-7E	BOLT							1
12	A27-ES	NUT							3
11	SP90-C6	SPLIT PIN							3
10	STP 157	FORK END							1
9	J52108	WASHER					AJE584		4
8	A59-9E	BOLT							2
7	SP90 C8	SPLIT PIN							1
6	A27-JS	NUT							1
5	SP-15-J	WASHER							1
4	A25-13J	BOLT							1
3	JA50560	LEVER ASSY					CJE154		1
2	JA50570	SHOCKCORD					AJE 158		2
1	^{MODEL} 3200	TAIL WHEEL ASSY					SCOTT		1

MS 11 & 12

in

A/C	PROTECTIVE TREATMENT	SCALE	ASSY. NOS.	ITEM NO	PART NO	DESCRIPTION	MATERIAL OR DRG. NO	NO OFF.
CIVIL	(ITEM 16) B+AS+AJ	N.T.S.	DJ 168	1	3200	TAIL WHEEL ASSY	SCOTT	1
APP.	WELDING DATA	ROD	FLUX	DRAWN: 21-5-64 H.J. DALBY.		CHECKED: <i>[Signature]</i>	TRACED:	TRACING CHECKED
MOD. NO	BEAGLE-AUSTER AIRCRAFT LTD. LEICESTER.						PART NO. SEE TABLE	
ISSUE	TITLE. INSTALLATION OF SCOTT TAIL WHEEL						DRG. NO. DJE 661	

5 6 7 8

5

6

7

8

DJEGGI

TAIL WHEEL WITH DAMPER

DAMPER LINK (REF)

7 DRILL № 52

2

6

5

4

1

13

14

12

11

15

5

6

7

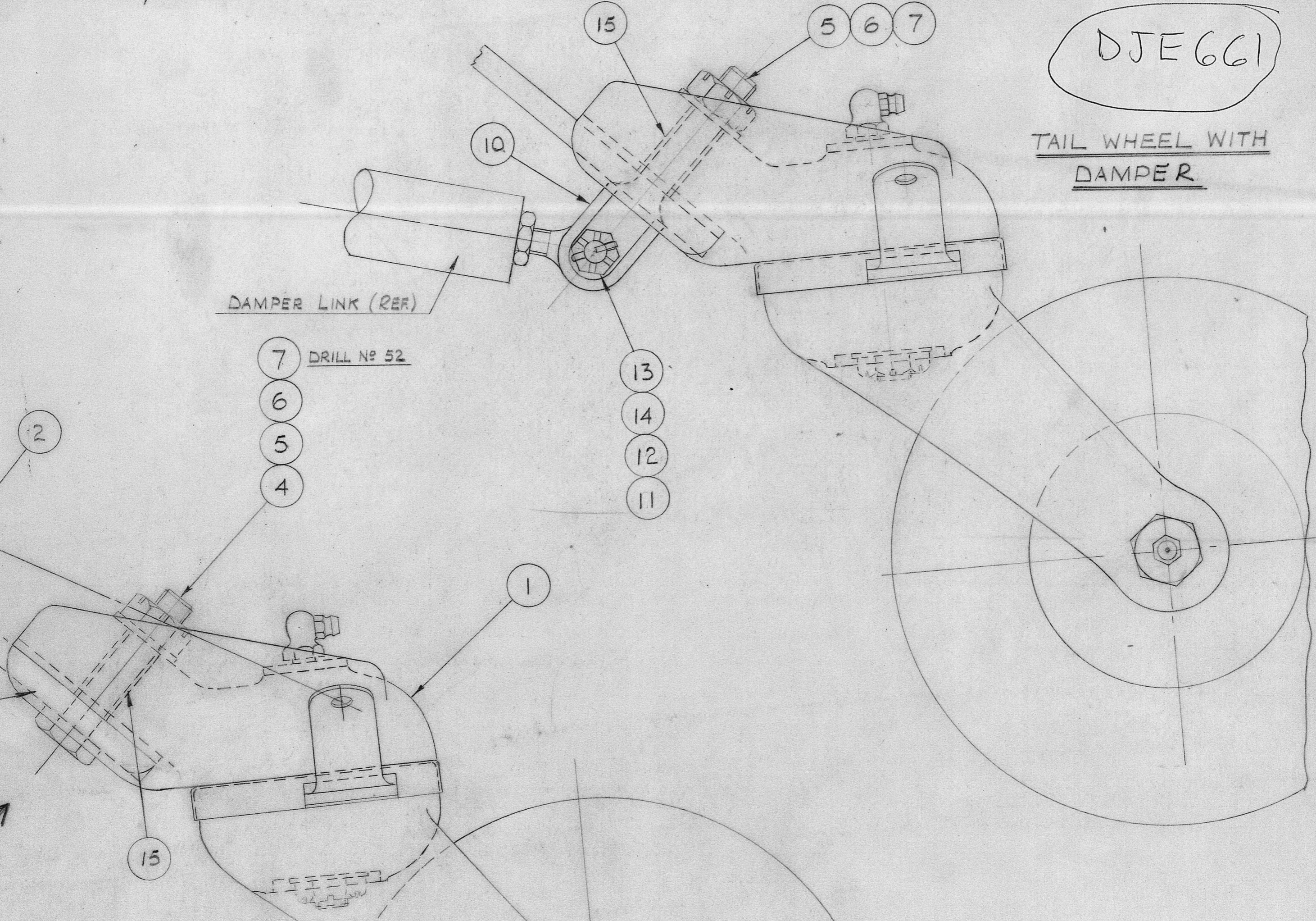
10

15

A

B

C

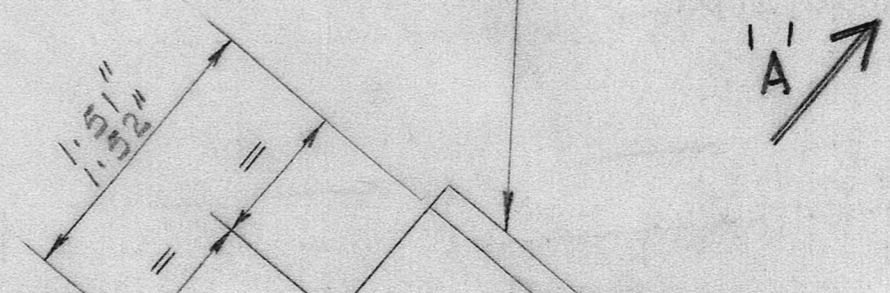


1. DO NOT SCALE DRAWING.
2. ENGLISH PROJECTION IS USED UNLESS OTHERWISE STATED.
3. TOLERANCES ON DIMENSIONS ARE + OR - .01" UNLESS OTHERWISE STATED.
4. IF IN DOUBT ABOUT THIS DRAWING, RING DRAWING OFFICE BEFORE COMMENCING OPERATIONS.

8 9 12 11 DRILL No 52

2 HOLES DRILL & REAM .25" $\pm .0005$ " THRO. TUBE & ITEM 3.

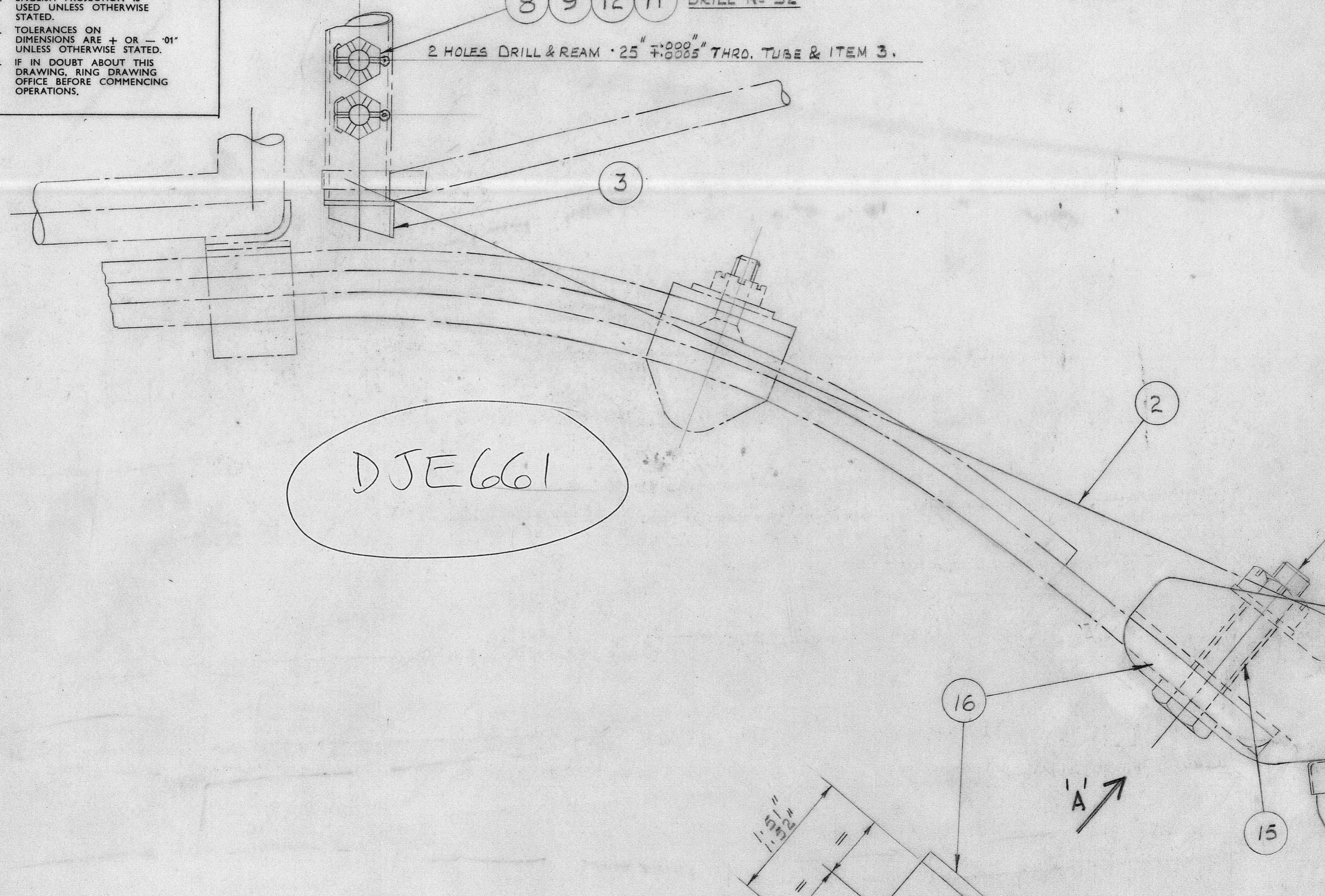
DJEG661



A

B

C

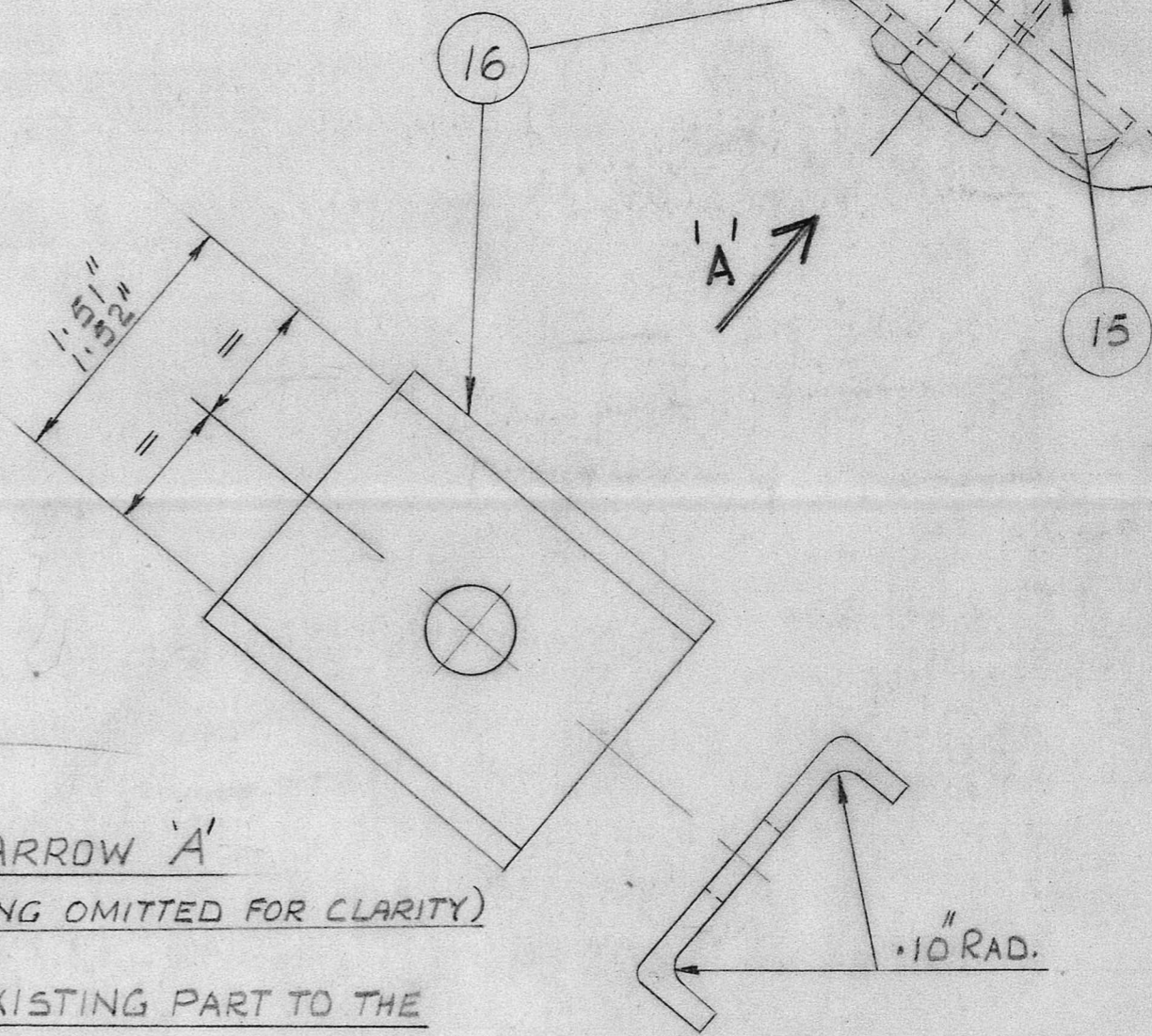


This drawing is provided in accordance with original A.S. 101/Beagle applicability for use with the initial enquiries "aircraft ONLY".

CORRECT APPLICATION TO THE AIRCRAFT IS THE RESPONSIBILITY OF THE ENQUIRER AND HIS ENGINEER AND NOT OF "AUSTER SPARES" OR LEICESTERSHIRE AIR SEALS.

Its supply does not confer any right to produce and trade in any of the components. Enquiries for these should be sent to:

DJE 661



VIEW ON ARROW 'A'
 (BOLT & SPRING OMITTED FOR CLARITY)

MODIFY EXISTING PART TO THE DIMENSIONS GIVEN.

PART NO	CONSISTING OF
JL52357	ALL ITEMS EXCEPT 10, 13, 14, & 1 OFF ITEMS 11 & 12
JL52358	ALL ITEMS EXCEPT 4

NOTE - INFLATION PRESSURE 30 lbs per sq in

