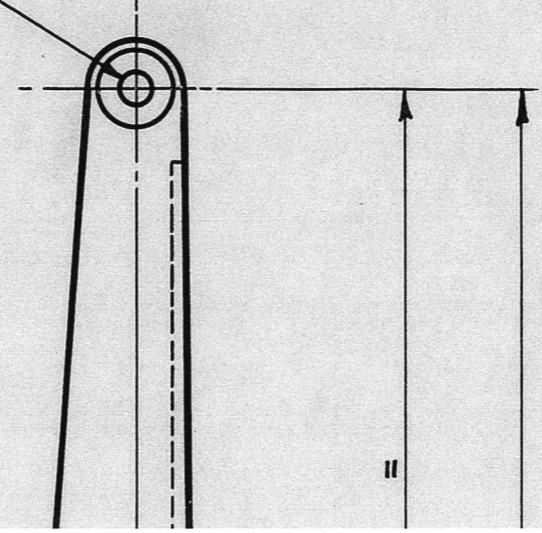


2-HOLES, No. 12 DRILL



This drawing is provided in accordance with special instructions
 issued to the customer. It is the customer's responsibility to
 ensure that the drawing is used for the correct application.
 LEICESTER ENGINEERING CO. LTD.
 LEICESTER, ENGLAND.

DRAWN FROM SHOPS SAMPLE.

6							
5	SP 1/3 C	WASHER					2
4	50528	PLUG 1/2" DIA. x 5/8" LG.			CORK		1
3	50563	TUBE 5/8" P/D x 17G			T45		1
2	50562	16 G PLATE			D.T.D. 124 A		1
1	50561	16 G PLATE			D.T.D. 124 A		1
ITEM No.	PART No.	DESCRIPTION	MATERIAL OR DRG. No.	No. Off			

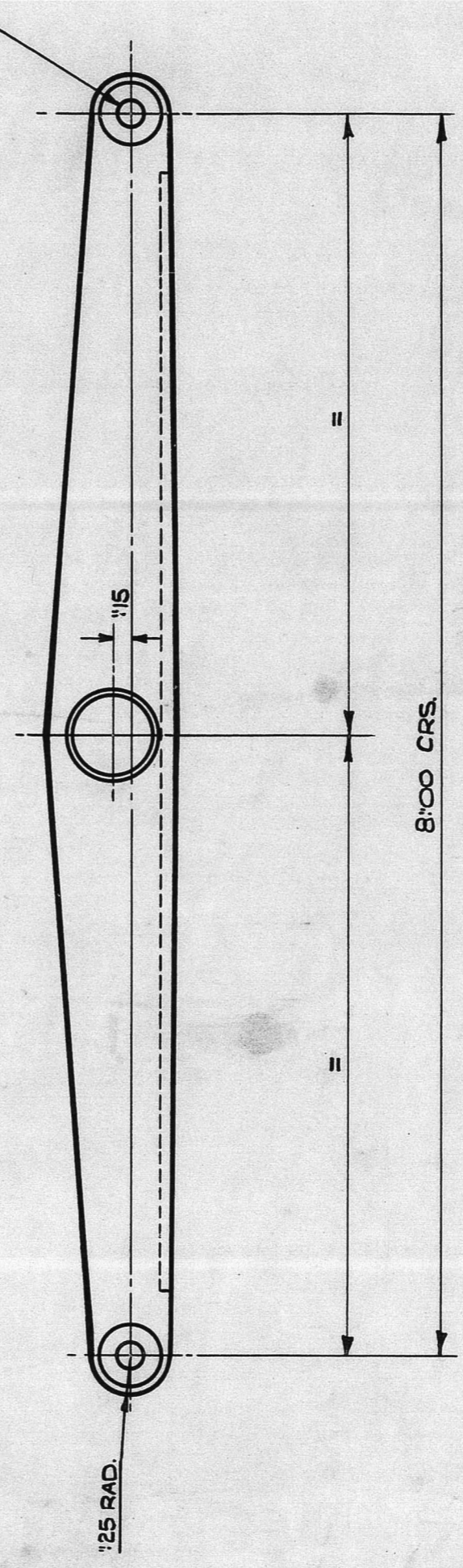
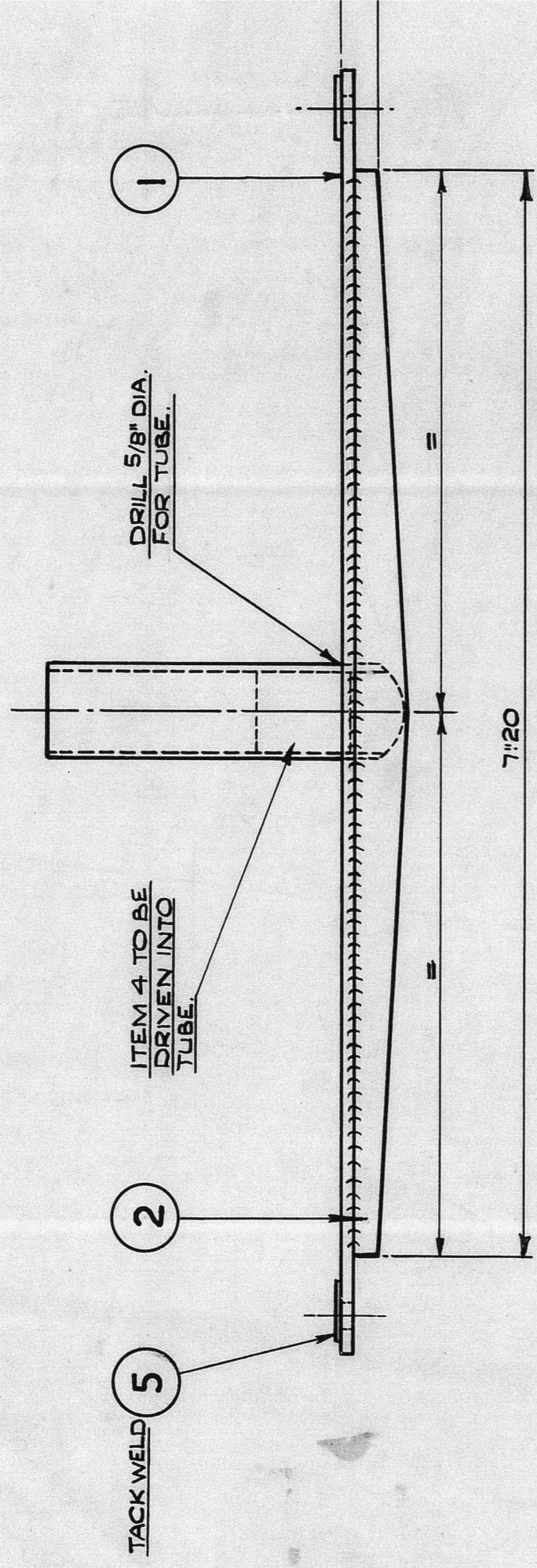
DRAWN BY: RC.W. 15/6/47
 CHECKED BY: KH
 STRESS APPROVAL: H.A.C.
 DESIGN APPROVAL: R.T.O.
 TRACED BY: A.M.D. *Wyang*
 MATERIAL OR DRG. No. PART No. JA 50560
 DRG. No. CJE 154

PROTECTIVE TREATMENT: EJE 365 DJE 157 DJE 266 DJE 483 DJE 403
 SCALE: 1:1

AUSTER AIRCRAFT LIMITED, LEICESTER.

TITLE: LEVER ASSY.

1. DO NOT SCALE DRAWING
2. ENGLISH PROJECTION IS USED UNLESS OTHERWISE STATED.
3. TOLERANCES ON DIMENSIONS ARE + OR - .01 UNLESS OTHERWISE STATED
4. IF IN DOUBT ABOUT THIS DRAWING, RING DRAWING OFFICE BEFORE COMMENCING OPERATIONS.



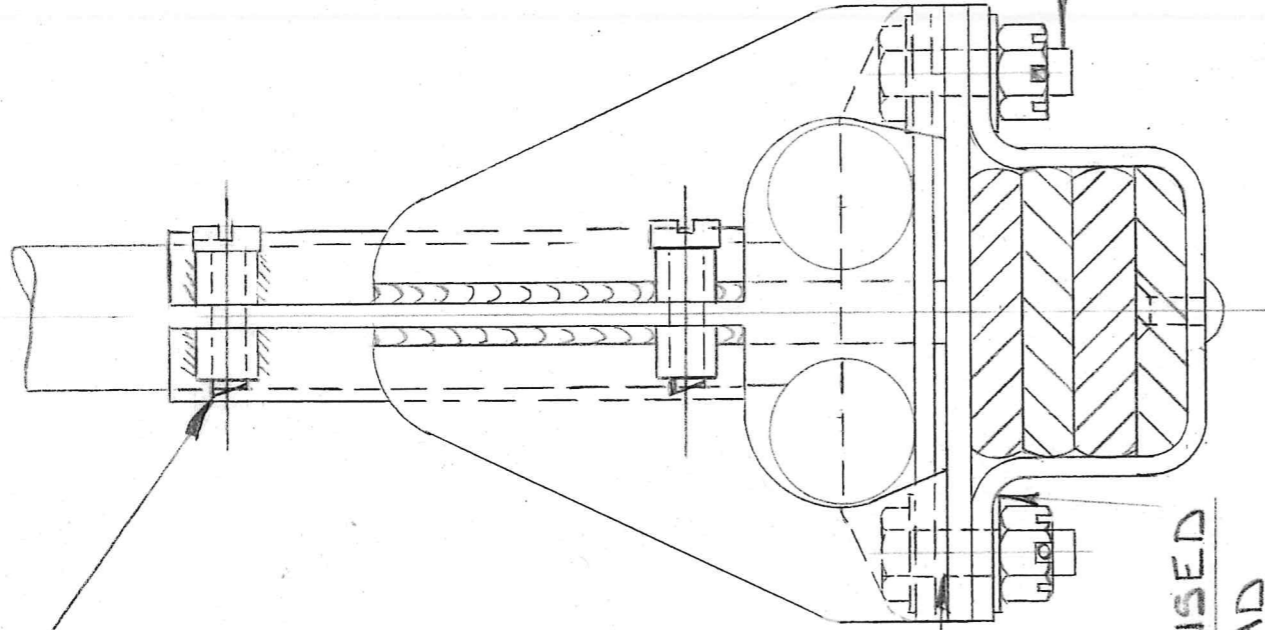
CJ E 154

ISSUE	MOD. NO.	INTERNAL MOD. NO.	CLASS	APP	R.T.O
C					
B					
A					

TYPE: CIVIL AIRCRAFT.

PROTECTIVE TREATMENT	ASSY. Nos
	EJE 365
SCALE:	
AUSTER AIRC	
TITLE: LEVER ASSY.	

RINET OVER BOLTS
ON ASSY.



DRILL LETTER 'F'

EDGE TO BE RADIIUSED
TO SUIT BEND RAD

- SPRINGS

RE
TER
BRKT.

2
4
7

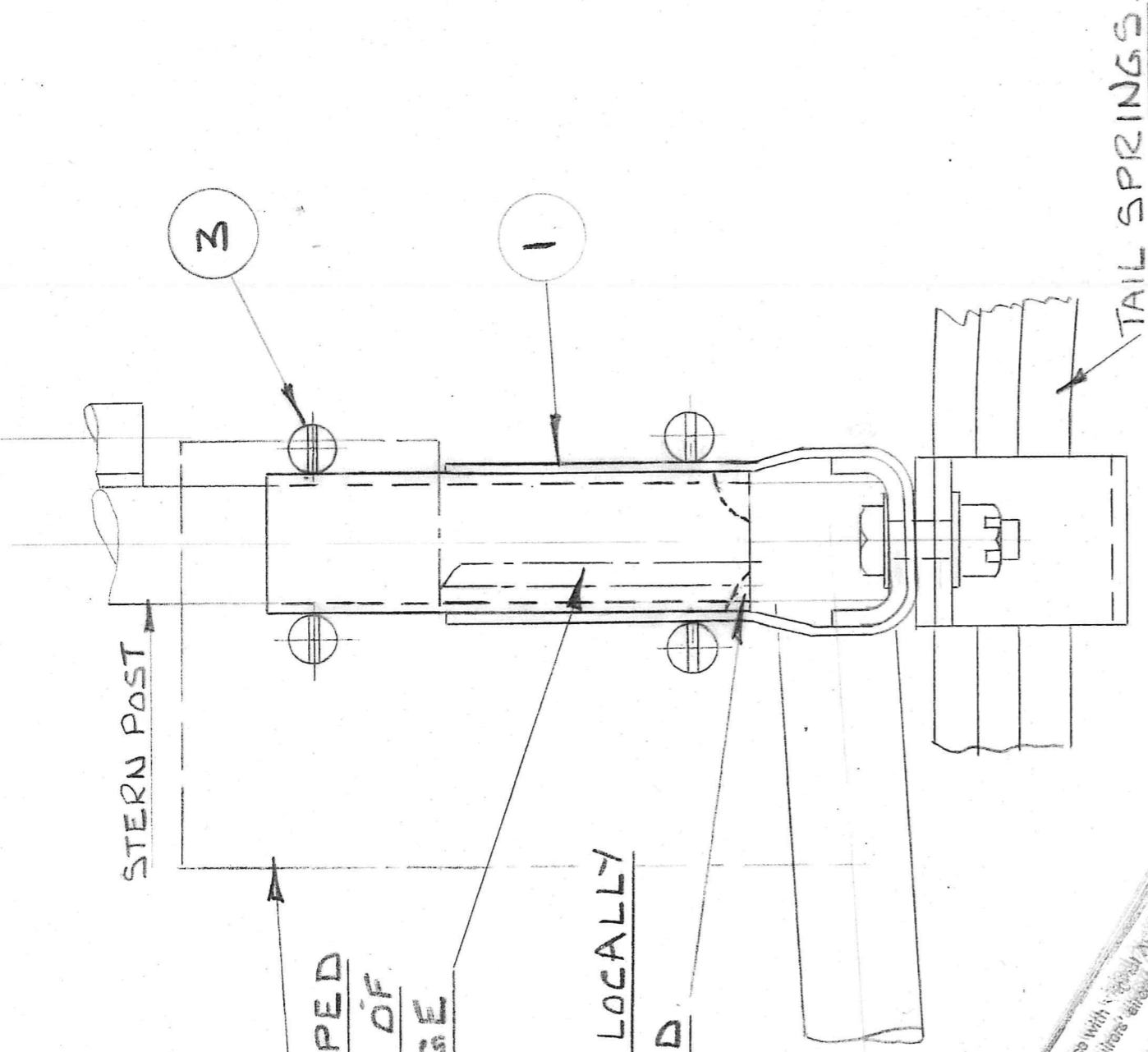
DRILL
No 52

ITEM NO.	ASSY. NOS.	DESCRIPTION	MATERIAL OR DRG. NO.	NO. OFF
6				
5	SP9/C8	SPLIT PIN		2
4	ST 103/K	WASHER		4
3	A31/C24.	CHEESE H ^P BOLT		4
2	A254E	BOLT		2
1	JA 15681	SUPPORT BRKT	CJA1855	1
DRAWN BY: DA		CHECKED BY:		TRACING CHECKED
SCALE: 1/1		STRESS APPROVAL		PART NO.
AUSTER AIRCRAFT LIMITED, LEICESTER.		DESIGN APPROVAL		DRG. No. C.R.1171
TITLE: REINFORCING OF STERN POST		APPROVED R.T.O.		

1. DO NOT SCALE DRAWING.
2. ENGLISH PROJECTION IS USED UNLESS OTHERWISE STATED.
3. TOLERANCES ON DIMENSIONS ARE $+$ OR $-.01$ UNLESS OTHERWISE STATED.
4. IF IN DOUBT ABOUT THIS DRAWING, RING DRAWING OFFICE BEFORE COMMENCING OPERATIONS.

FABRIC PATCH.
PATCH TO BE DOPED
TO INSIDE FACE OF
BRACKET FLANGE

FILE BRACKET LOCALLY
TO CLEAR WELD.



This drawing is provided in accordance with the instructions and applicable specifications for use with the initial equipment only.
 CORRECT APPLICATION TO THE AIRCRAFT IS THE RESPONSIBILITY OF THE EQUIPER AND HIS ENGINEER AND NOT OF AUSTRALIAN AIRCRAFT LEICESTERSHIRE LTD.
Its supply does not confer any right to products and parts in any of the components. Enquiries for these should be sent to:

ENSURE SPRINGS ARE
CLAMPED TIGHT AFTER
FITTING SUPPORT BRKT.

CR1171

DRILL

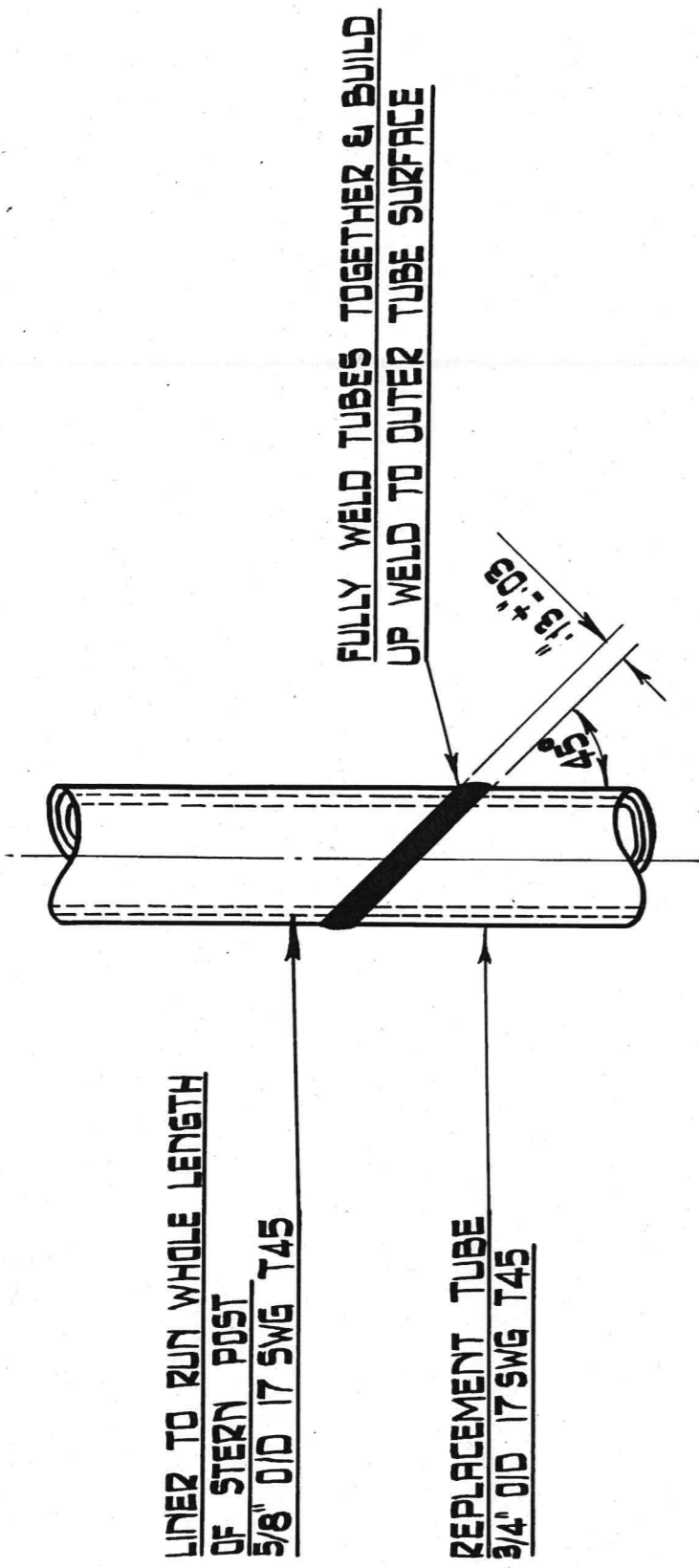
EDG
TO:

C	CIVIL	INTERNAL	CLASS	APP.	R.T.O.				
ISSUE	MOD. NO.	MOD. NO.	MOD. NO.	MOD. NO.	MOD. NO.				
	3574								

TYPE: CIVIL

PROTECTIVE TREATMENT	ASSY. NOS.
	SCALE:
AUSTER AIRC	
TITLE: REINFORC	

R1
01



DETAIL 'A' (SCALE 1/1)

SEQUENCE OF OPERATIONS.

- ① CUT AWAY CAREFULLY AROUND LOWER LONGERONS & STERN POST CLUSTER, MAINTAINING THE ORIGINAL LENGTH OF THE LONGERONS.
- ② CUT AWAY CRUMPLED PORTION OF STERN POST AS SHOWN IN DETAIL 'A' & REPLACE WITH 3/4" O/D 17 SWG T45
- ③ INSERT 5/8" O/D 17 SWG T45 LINER INSIDE STERN POST & WELD UP AS SHOWN
- ④ SALVAGE TAIL SPRING SUPPORT FROM REDUNDANT PORTION OF STERN POST.
- ⑤ REWELD LONGERONS & TAIL SPRING SUPPORT TO STERN POST.

* THIS REPAIR SCHEME APPLIES TO ALL CIVIL A/C INCORPORATING 3/4" O/D STERN POST.

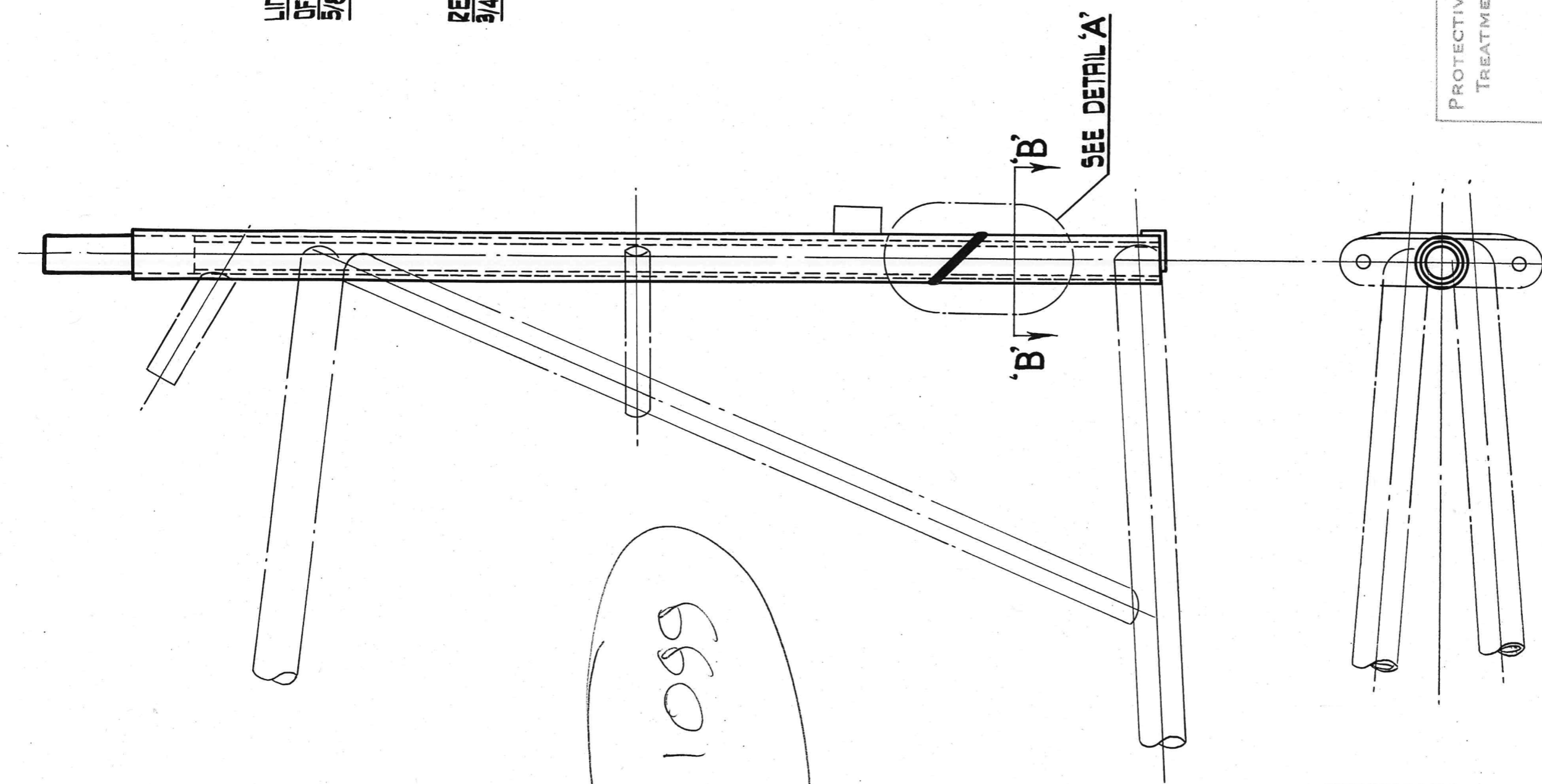
'B'
SEE DETAIL 'A'

ITEM No.	DESCRIPTION	MATERIAL OR DRG. No.	No. OFF
6			
5			
4			
3			
2			
1			

PROTECTIVE TREATMENT	ASSY. Nos.	
SCALE: 1/2 : 1/1.		
DRAWN BY: W.E. 4-1-53		
CHECKED BY: JVT		
STRESS APPROVAL		
DESIGN APPROVAL		
APPROVED R.T.O.		
AUSTER AIRCRAFT LIMITED. LEICESTER.		PART No.
TITLE: INSERTION REPAIR TO STERN POST		DRG. No: C R.1099
TRACED BY: BJR		TRACING CHECKED: JVT.

LINER TO RUN
OF STERN PD
5/8" O/D 17 SW

REPLACEMENT
3/4" O/D 17 SWG



CR 1099

1. DO NOT SCALE DRAWING

2. ENGLISH PROJECTION IS USED UNLESS OTHERWISE STATED.

3. TOLERANCES ON DIMENSIONS ARE ± 0.01 UNLESS OTHERWISE STATED.

4. IF IN DOUBT ABOUT THIS DRAWING, RING DRAWING OFFICE BEFORE COMMENCING OPERATIONS.

This drawing is provided in accordance with original Austen/Dougherty applicability for use with the initial enquirers' aircraft ONLY.

CORRECT APPLICATION TO THE AIRCRAFT IS THE RESPONSIBILITY OF THE ENQUIRER AND HIS ENGINEER AND NOT OF "AUSTER SPANIER" OR LEICESTERSHIRE MUSEUM'S.

Its supply does not confer any right to produce and trade in any of the components. Enquiries for these should be sent to:-

ISSUE	MOD. NO.	INTERNAL MOD. NO.	CLASS	APP.	R.T.O.
A	CIVIL	2439		REB	

TYPE:- SEE *

SECTION 'B-B' (SCALE 1/2)

PROTECTIVE
TREATMENT

ASSY. No.:

SCALE:

AUSTER AIRC

TITLE: INSERTION RE