



## Arriving at Stow Maries Great War Aerodrome by Air

We are very happy to welcome responsible pilots to our historic Aerodrome.

We are now open to visiting aircraft during regular opening Friday - Sunday (or by arrangement) 0800-2000 or SS whichever is earlier.

**PPR must be obtained, personally, by the pilot as there will be a minimal briefing before PPR is granted.**

To obtain PPR please email [airops@stowmaries.org.uk](mailto:airops@stowmaries.org.uk) or text/call 07944 292432 between **0800-1700hrs Monday to Friday.**

**Requests for PPR by text, phone and email outside of this time will not be dealt with and therefore landing cannot be guaranteed.**

### **Fees**

All aircraft will be charged £15 each to land. This will gain the Pilot and all passengers access to the Airmen's Mess Café and the Shop (a 'Pink Wristband' admission). To access the full site, each person must pay admission charges full Admission (a 'Green Wristband') which grants escorted access to our Hangars, access to all of our award-winning exhibitions AND a guided tour.

Last Admission for full access is 1500hrs Local.

**PLEASE NOTE:** At Stow Maries Great War Aerodrome, we are committed to maintaining good relationships with our neighbours. These relationships rely on our visiting pilots being as careful as they can in following instructions. It is VITAL, for the benefit of our neighbours, that you contact us in advance of your landing and follow these instructions. Inappropriately overflying local residences will be dealt with severely.

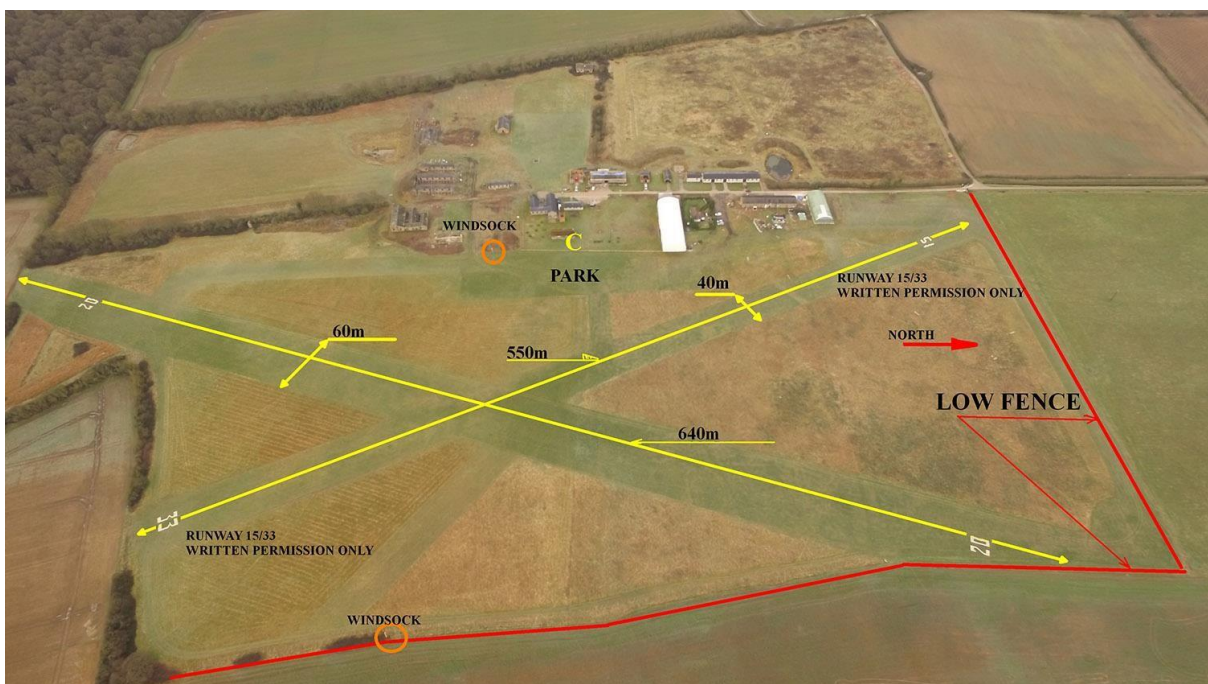
- Runways: 02/20, 640m x 60m, Grass.
- Determine runway in use from windsocks.
- Airfield elevation 185 feet.
- Contact Southend Radar on 130.780 with 10 miles to run.
- Change to Stow Maries Radio 118.980 with 2 miles to run.
- Make blind "traffic" calls if no reply. Join overhead at 1200ft QFE (AGL)
- No deadside, do NOT fly to East of airfield, all circuits to the west.
- Left hand on 02, right hand on 20.
- Circuit height 800 ft QFE.
- Park outside Pilots Ready Room (marked with "C"), book in.
- Landing fee: £15
- Co-ordinates: N5140.23 E00037.58
- Runway 15/33: 550 metres by 40 metres. Only available with specific written or SMS permission.

- Arrival note - Runway 02: it is vital that you avoid nearby Wellinditch Farm. This is particularly important. If this is not mentioned during your briefing, please ask for details.
- Departure procedure – Runway 20: After departure, turn right 20 degrees of centre line as soon as safe and practicable.

**For pilots, the following applies:**

The Aerodrome operates within London Southend Airport’s (LSA) Controlled Airspace - Southend Radar 130.780

London Southend Airport Controlled Airspace (CAS) Safety Information Notice and Operating Procedures for the “Stow Maries Box”.

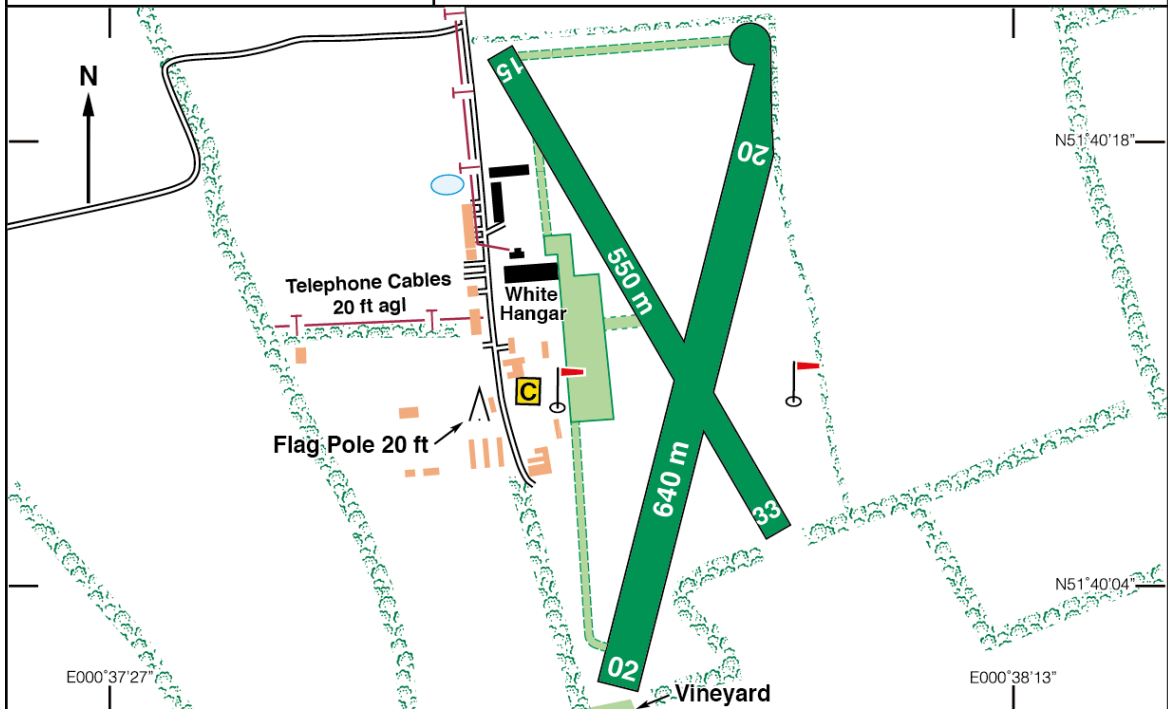


N51 40.18 E000 37.95 **STOW MARIES** 185ft AMSL

1 nm NNE of Woodham Ferrers. **CLN 114-55 243 22**

**c/s Stow Maries Radio 118-980 A/G** (Blind calls if not manned)

**Southend APP/RAD 130-780**



Rwy	Dim(m)	Surface	TORA(m)	LDA(m)	Lighting
02/20	640x60	Grass	Unlicensed		Nil
15/33	550x40	Grass	Unlicensed		Nil

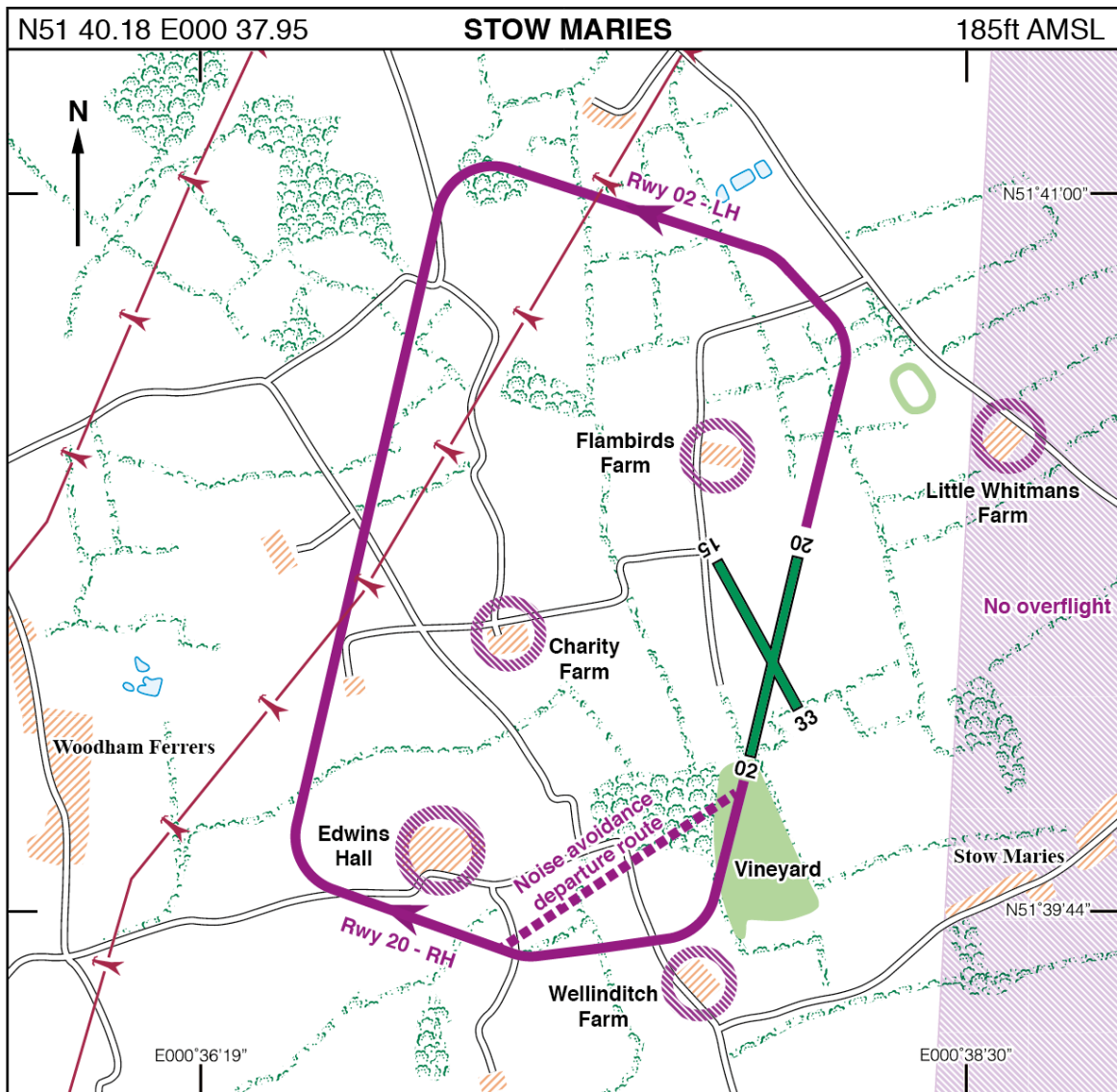
**Op hrs:** Fri-Sun (or by arrangement) 0800-2000 or SS whichever is earlier.  
 PPR essential by telephone (operates Mon-Fri 0800-1700).  
 More details at <https://www.stowmaries.org.uk/contact/directions-air>

**Landing Fee:** £15, includes Café and Shop.  
 Entrance to Museum Galleries and Hangars is extra.

**Customs:** Nil. **Hangarage:** Nil. **Maintenance:** Nil.

**Remarks:** Operated by Stow Maries Great War Aerodrome Ltd, Hackmans Lane, Purleigh, Essex CM3 6RN. Contact Southend Radar recommended when operating within 15 nm of Southend Airport. Situated beneath Southend CTA (Class D) starting at 1500ft alt. Southend CTR (Class D) 1 nm SE of field. Call before joining, make normal circuit calls blind if not manned. Join overhead at 1200ft agl. All circuits to the West at 800ft agl. No Deadside. Do not overfly local farmhouses and any areas East of the AD. Use West side of Rwy 02/20 to achieve longest take-off and landing distance due to non-standard shape of Rwy 20 Thld. Regret NO helicopters (other than ASU), NO flex-wing microlights and NO twin-engine aircraft may land. Airfield regularly closed for special events - check website & NOTAMS.

*continued*



**Noise Abatement Procedures**

No straight-in approaches on Rwy 02 and all pilots are to make a curved/dog-leg approach to avoid overflight of Wellinditch Farm.

Rwy 20 Thld. Rwy 20 - On departure turn right 20° of centreline as soon as safe and practicable.

**Caution:** Upslope on Thld Rwy 02. All rwys drop away slightly in the centre of the field. Beware curl-over on short finals for Rwys 02 & 33. Model acft regularly operate from a field NW of the AD, caution downwind and on base leg Rwy 15 & 20. Vineyard on threshold Rwy 02.

Telephone cables 20ft agl on short finals Rwy 15. Mast 140ft agl 0.5 nm SW of field.

**Warnings:** Rwy 15/33 only available with written (or SMS) permission.

**Restaurant:** On site & Three Rivers G&CC, Cold Norton, Tel: 01621 829781.

**Accommodation:** Local Pub and B & B, Prince of Wales Tel: 01621 828971.

**Taxi:** CM3 Cars Tel: 01245 328818.

**Fuel:** 100LL (Limited).

**Mob:** 07944 292432. (PPR)

**Email:** airops@stowmaries.org.uk

**Website:** www.stowmaries.org.uk