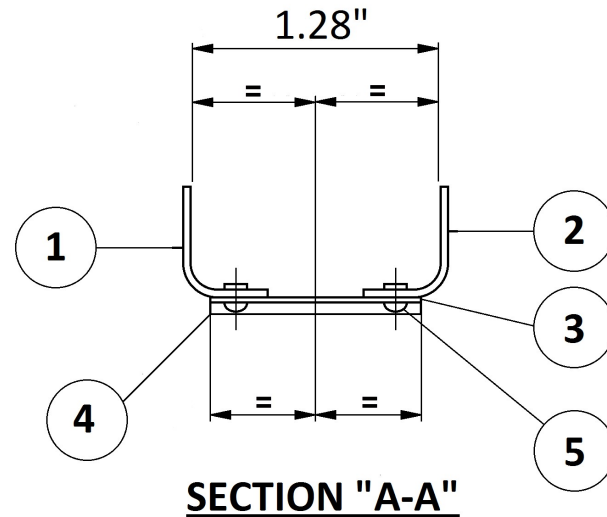
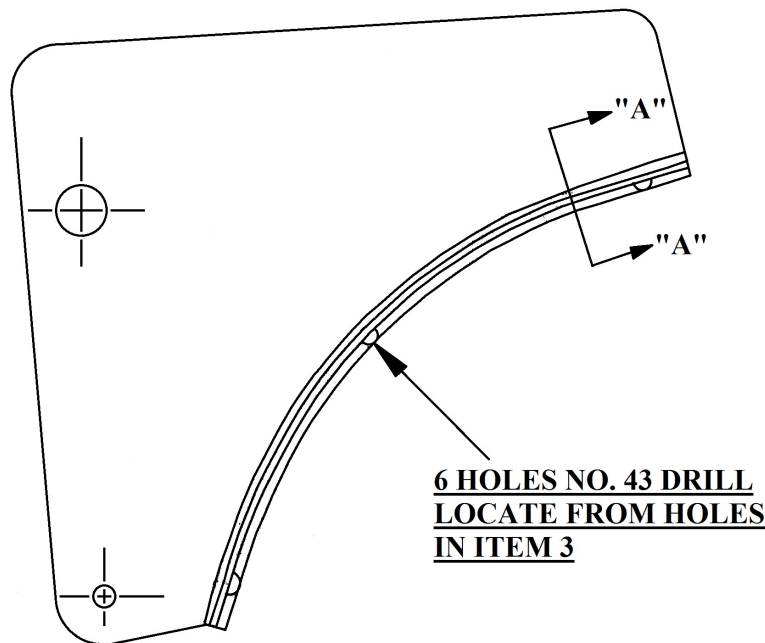


1. DO NOT SCALE DRAWING
2. ENGLISH PROJECTION IS USED UNLESS OTHERWISE STATED
3. TOLERANCES ON DIMENSIONS ARE + OR - 0.01" UNLESS OTHERWISE STATED
4. IF IN DOUBT ABOUT THIS DRAWING, RING DRAWING OFFICE BEFORE COMMENCING OPERATIONS.



**NOTE**  
**BOSTICK FELT TO BRKT**

D	CIVIL AMEND	3784			
C	CIVIL AMEND	2443			
B	CIVIL AMEND	2049			
A	CIVIL MOD	1751			
SUE	MOD NO.	INTERNAL MOD NO.	INTERNAL CLASS	APP.	R.T.O

**X ALTERNATES**

X	6	AS 2227/304	RIVET		
X	5	AS 157/304	RIVET		
	4	K 80756	FELT 1/16" THICK X 3.70" LONG		
	3	K 80753	DOUBLING PLATE	AKH 249	
	2	J 81982/R	BRACKET	AJH 625	
	1	J 81982/L	BRACKET	AJH 625	
		ITEM No.	PART No.	DESCRIPTION	MATERIAL OR DRG. No.
		SCALE:- NTS	DRAWN:-	CHECKED. <i>[Signature]</i>	TRACED:-
				STRESS APPROVAL <i>[Signature]</i>	TRACING CHECK

PROTECTIVE TREATMENT

ASSY. Nos.  
**CJH 154**

**AUSTER AIRCRAFT LTD., REARSBY, LEICESTER.**

DESIGN APPROVAL *[Signature]*  
APPROVED R.T.O.

PART No. **JA81147**

TYPE: **J5B, F, G, H & J5 CONV**

TITLE:- **BRACKET ASSY (FRONT)**

DRG No. **AJH 152**