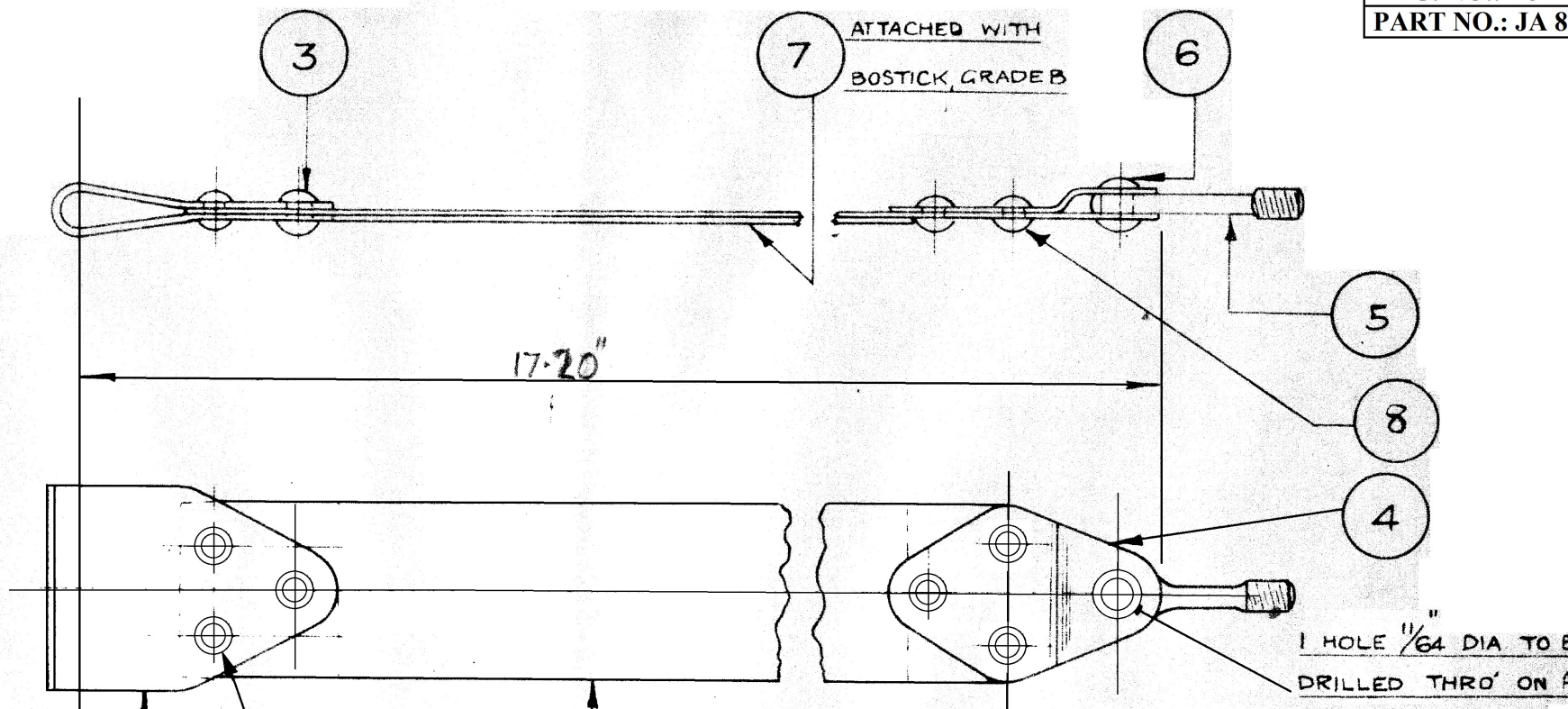


DO NOT SCALE DRAWING
ENGLISH PROJECTION IS
USED UNLESS OTHERWISE
STATED
TOLERANCES ON
DIMENSIONS ARE + OR - 0.03"
UNLESS OTHERWISE STATED



ITEM NO.	DESCRIPTION	MATERIAL OR DRG. NO.	No. C
8	SEMI-TUBULAR STEEL RIVET 1/8" x 1/8" LONG.	SUPPLIED BY BIF RIVET CO	3
7	STRIP 1" x 14.4" x 1/16" THICK	FELT	1
6	RIVET	-	1
5	TURNBUCKLE EYE	-	1
4	STRAP BRACKET	AKH 23	1
3	SEMI-TUBULAR STEEL RIVET 1/8" x 5/32" LONG	SUPPLIED BY BIF RIVET CO.	3
2	TANK STRAP END	AKH 14	1
1	STRAP	AJH 147	1

CIVIL AMEND	1964				
CIVIL MOD.	1751				
17.20" WAS 17.10"					
MOD. No.	INTERNAL MOD. No.	INTERNAL CLASS	APP.	RTO	

PROTECTIVE
TREATMENT

ASSY Nos	DTC 667	
CJH154	CJH 510	

DRAWN:-
WJK.

CHECKED
W. B. B.

TRACED:-

TRACING, CHEC

TAYLORCRAFT AEROPLANES (ENGLAND), LTD., LEICESTER.

STRESS APPROVAL
R.B.A.

PART NO. JA 81142

TYPE:- AUSTER

J5B, F, G, H
J5 CONV.

TITLE:- ASSY OF TANK STRAP

DESIGN APPROVAL
R.B.A.
APPROVED
R.T.O.

DRG. No. AJH 148