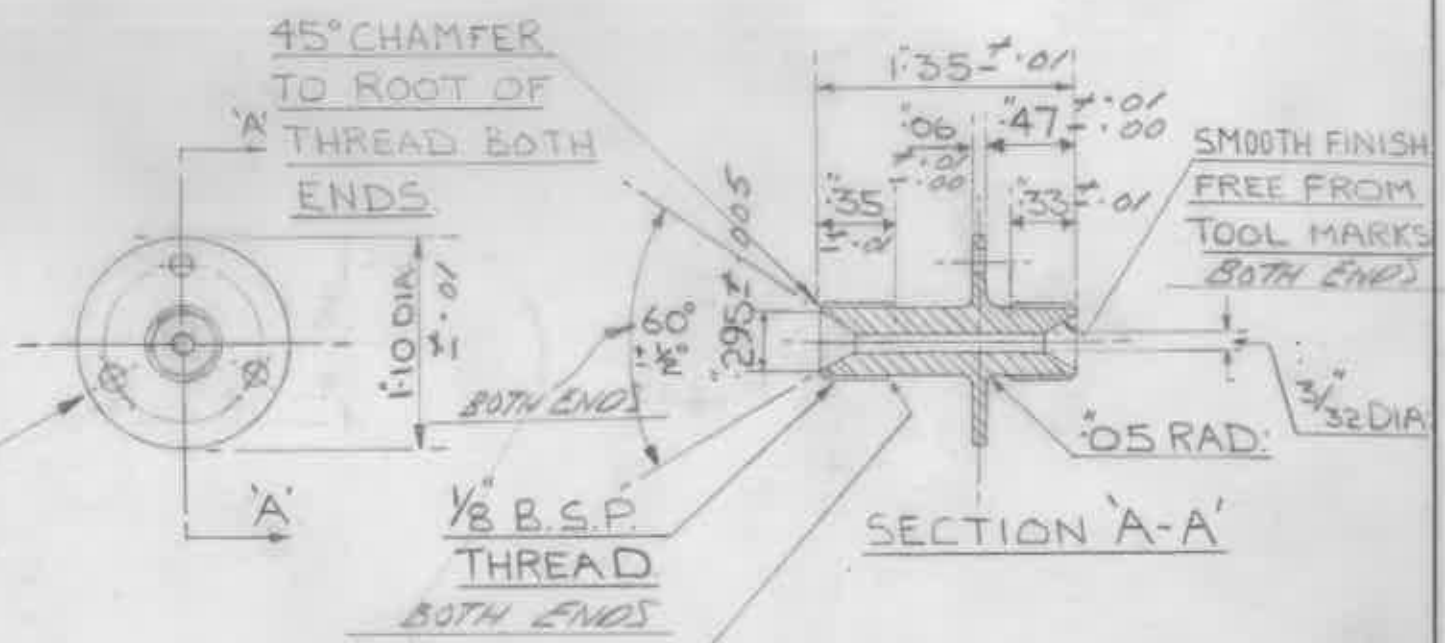


1. DO NOT SCALE DRAWING
2. ENGLISH PROJECTION IS USED UNLESS OTHERWISE STATED.
3. TOLERANCES ON DIMENSIONS ARE ± 0.005 UNLESS OTHERWISE STATED
4. IF IN DOUBT ABOUT THIS DRAWING, RING DRAWING OFFICE BEFORE COMMENCING OPERATIONS.



DRILL 3-HOLES $5/32$ DIA
EQUALLY SPACED
ON $.80$ P.C.D. $\pm .005$

NOTE: THIS PART IS IDENTICAL TO
AGS 1112/A EXCEPT FOR
3 OFF HOLES AND MATERIAL

THIS PART IS
IDENTICAL TO BS 57-157

				EJF 610 SHT. 2		EJF 545 Sheet 2					
				EJA 811		EJA 550		EJA 636		EJA 545	
				EJA 1631		EJA 4042		EJA 734		EJA 385	
A				PROTECTIVE TREATMENT		ASSY. Nos.		ITEM No.		PART No.	
CIVIL MOD 1823				CADMIUM		SCALE: - 1/1		DRAWN: - 14.11.49 J.C. KNOWLES		DESCRIPTION	
ISSUE MOD. NO. INTERNAL MOD. NO. INTERNAL CLASS APP. R.T.O.										BAR	
										SlorS21	
										MATERIAL OR DRG. No.	
										No. Off	
										CHECKED: M.C.R.	
										TRACED: -	
										TRACING CHECKED	
										STRESS APPROVAL	
										DESIGN APPROVAL	
										APPROVED R.T.O.	
AUSTER AIRCRAFT LTD., REARSBY, LEICESTER.										PART No. J.60187	
TYPE: - CIVIL A/C				TITLE: - UNION BODY.						DRG. No. AJF 314	